

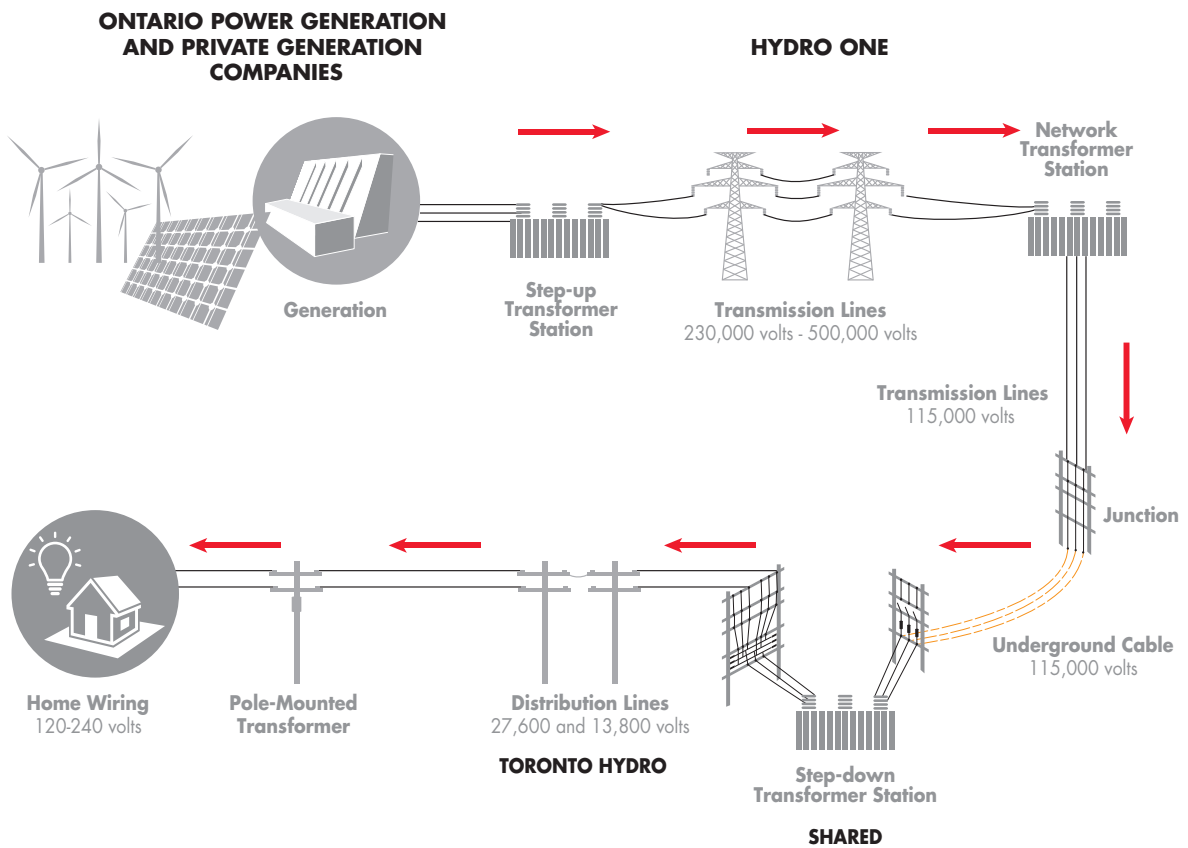
WELCOME TO OUR COMMUNITY OPEN HOUSE

LEASIDE TO MAIN INFRASTRUCTURE REFURBISHMENT PROJECT

Meet our project team and learn about:

- Upcoming construction in your community
- Project schedule
- Construction mitigation plans
- What to expect during construction
- Ongoing communications and project updates

HYDRO ONE'S ROLE IN DELIVERING POWER TO YOU



PROJECT DETAILS

Hydro One is upgrading critical infrastructure in the eastern part of Toronto that was installed in the 1960s and is at its end-of-life. These upgrades are important to ensure a strong, reliable supply of power for Toronto Hydro customers.

The work will consist of:

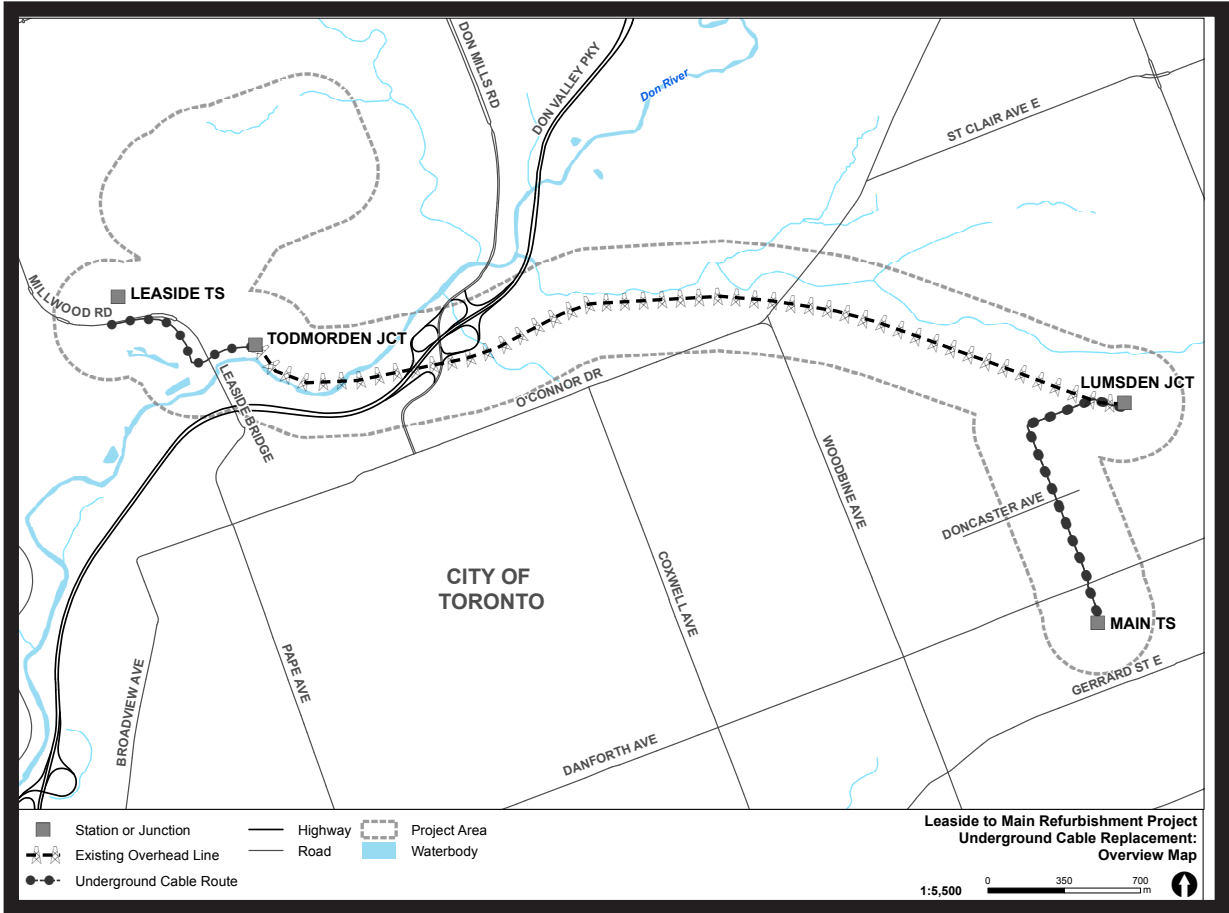
1. Replacing approximately 2 km of 115 kV underground power cables between:
 - Leaside Transformer Station (TS), and Todmorden Junction (JCT).
 - Main TS and Lumsden JCT.

A Class Environmental Assessment (EA) was conducted in 2016 for this work, which incorporated public consultation feedback.

2. Replacing approximately 5 km of overhead shield wire between Todmorden JCT and Lumsden JCT in the vicinity of Taylor Creek Park.

Routine vegetation maintenance has also been planned along this corridor during this time.

PROJECT AREA



OVERALL PROJECT SCHEDULE

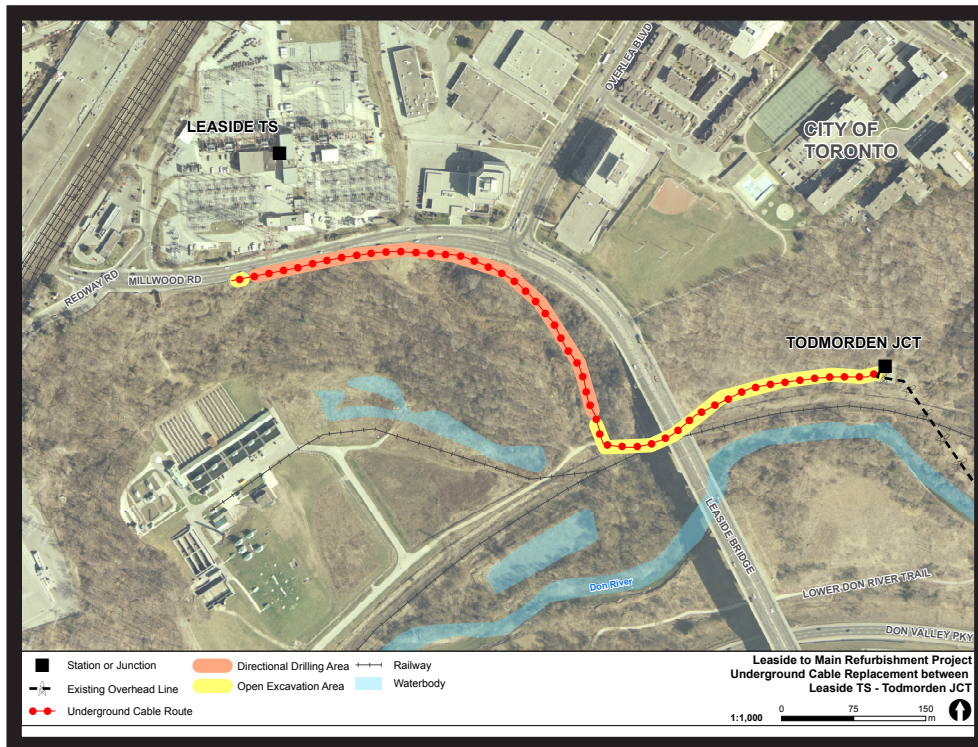
Construction will take place between February 2018-February 2019 and will consist of five stages:

1. Replacement of steel components at all four facilities
 - February-October: this will occur intermittently.
2. Cable replacement between Leaside TS and Todmorden JCT
 - February-June: preparation activities and installation of temporary access roads and cables.
3. Lumsden JCT activities
 - February-November: preparation activities, installation of temporary access road off Lumsden Ave. and ongoing construction activities.
4. Cable replacement between Lumsden JCT and Main TS
 - February-July: removal of existing cables and installation of cable duct bank.
 - June-September: pulling of new cables (minimal street disruption).
5. Shield wire replacement between Todmorden JCT and Lumsden JCT
 - February-March: installation of temporary access roads and routine vegetation maintenance.
 - August-September: pulling of new shield wire.

*The timelines for this project are subject to change, based on a number of factors, including weather and other infrastructure projects in the city. We will do our best to communicate any changes early and often.

LEASIDE TS TO TODMORDEN JCT

Underground Cable Replacement



- Cables will be replaced along the route which was selected based on feedback during the Class Environmental Assessment process.
- Temporary access roads will be installed and select vegetation will be removed, as required.
- Crews will perform directional drilling and open trenching to install cables.
- Directional drilling is used to install cables underground with minimal disruption to the surface.
- For public safety, brief restrictions to trails near work areas will be in effect.
- Anticipated timing: February to June (intermittent).

LEASIDE TS TO TODMORDEN JCT

Environmental Management and Mitigation

Hydro One is committed to protecting the natural environment during construction.

Some environmental avoidance and mitigation measures include:

- Work to be done primarily during winter months/frozen conditions to minimize effects to environmental and recreational resources.
- Use of directional drilling down the Don Valley slope to minimize surface disturbance along the ravine and creek.
- Use of existing roads and utility corridors for work areas/access, where feasible.
- Implementation of sediment control and tree protection measures.
- Control and removal of invasive plant species and restoration using native plantings and seedlings.
- Application of floodplain management plan for work within the Don Valley.

MAIN TS TO LUMSDEN JCT

Underground Cable Replacement



- Cables will be replaced along the southbound lane of Main St. and eastbound lane of Lumsden Ave.
- Parts of roadway and sidewalk will be excavated to replace existing cables.
- Construction will be completed in two to six week rolling sections, starting near Main Street TTC Station, moving north on Main St. towards Lumsden Ave.
- Excavation work will only occur in front of five to ten homes at a time, for approximately five days.
- Excavation area to be restored as work is completed.
- Anticipated timing: February to June (rolling construction).

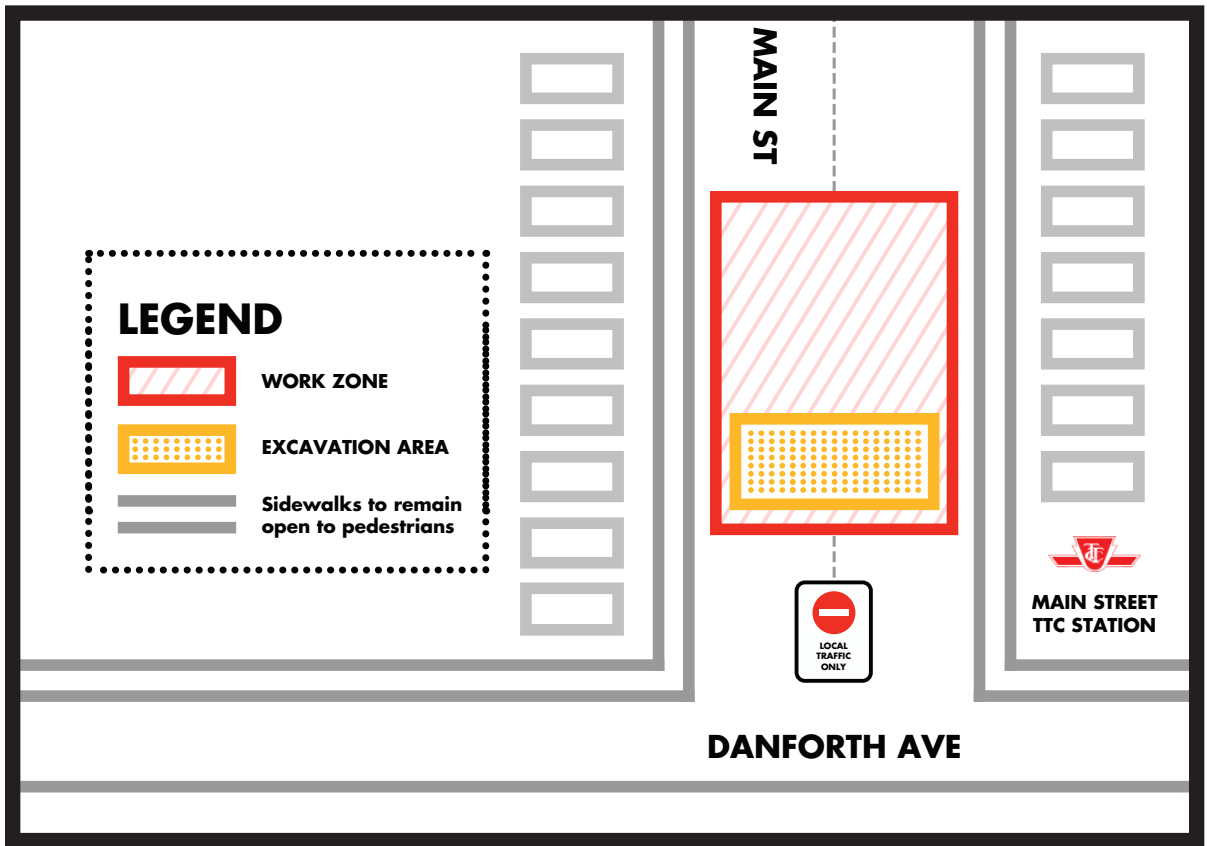
WHAT TO EXPECT ON MAIN ST.

- Excavation work will occur outside five to ten homes at a time and will be enclosed by fencing.
- Driveway entrances will be temporarily restricted where excavation is occurring; residents will be notified before this occurs.
- Within excavation area there will be no through traffic; the remainder of Main St. will be open to local traffic only.
- Parking spaces will be reserved within work zones.
- All sidewalks will remain accessible.
- Garbage pick-up, snow removal, mail, courier and newspaper delivery will not be disrupted.
- Access to business entrances will be maintained.
- TTC bus routes 62 Mortimer and 87 Cosburn will be diverted throughout construction.



WHAT TO EXPECT ON MAIN ST.

Work zone and excavation area will incrementally move north as work progresses.



WHAT TO EXPECT ON LUMSDEN AVE.

- Excavation activities will occur directly outside 5 to 10 homes at a time.
- Driveway entrances will be temporarily restricted where excavation is occurring during work hours, and restored at night (using steel plates).
- Residents will be notified before excavation occurs outside of their homes.
- The north sidewalk on Lumsden Ave. will be temporarily restricted during work hours.
- Lumsden Ave. will temporarily be reduced to one lane (controlled by a flag person) for approximately one month in the summer during work hours.



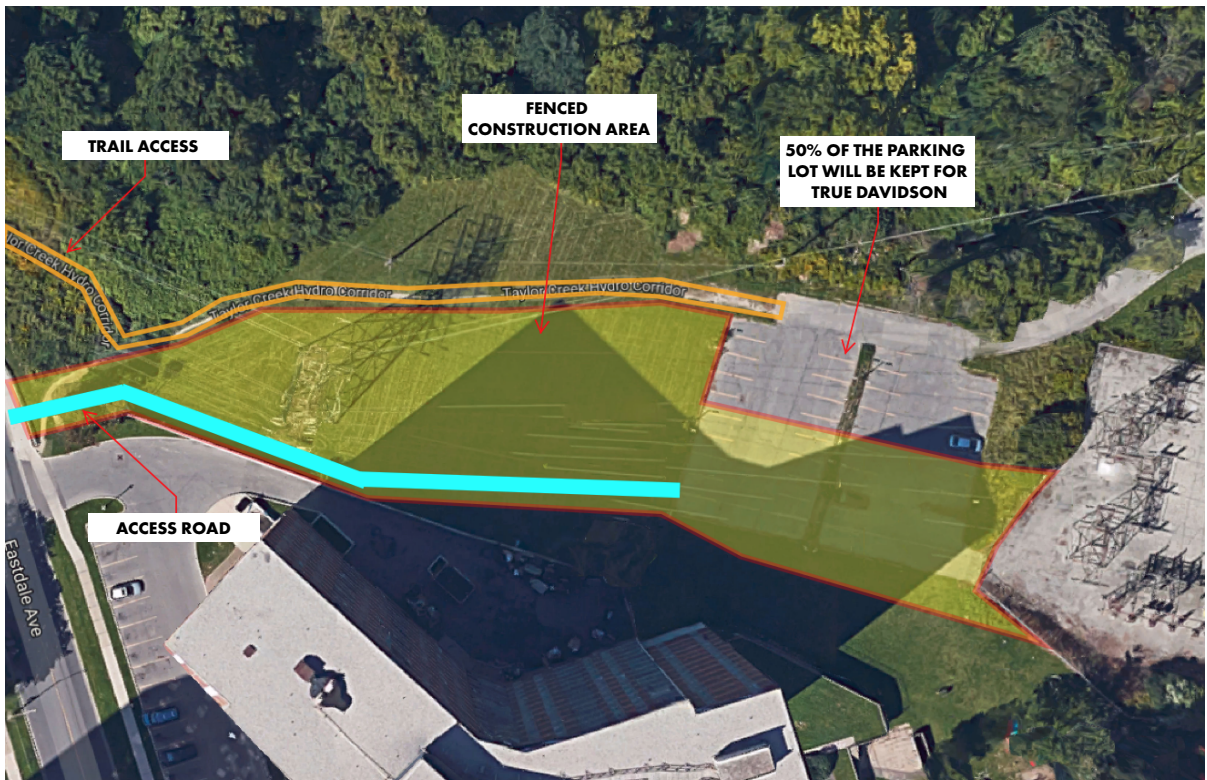
Example of open excavation construction



Example of duct bank installation used to house new cables

LUMSDEN JCT ACTIVITIES

- To prepare and connect the new cables to our Lumsden JCT facility (located near the True Davidson Acres parking lots), ongoing construction activities will occur throughout the year.
- The area will be enclosed by fencing, including the green space beyond the parking lots.
- A temporary access road will be constructed off Lumsden Ave.
- To ensure safety, flag persons will be in place to direct vehicles.
- For public safety, walking access to Taylor Creek Park from the corner intersection of Eastdale Ave. and Lumsden Ave. will be restricted.



CONSTRUCTION LOGISTICS

We understand construction can be disruptive and our team is committed to minimizing the effects on your community and ensuring the safety of our crews and the public.

Throughout construction, you can expect:

- Work hours: 7:00 a.m.–5:00 p.m., Monday-Friday (work may extend past these hours in special circumstances).
- An increase in noise, heavy machinery and activity.
- There are no planned disruptions to power or other utilities during construction.
- All work will occur within City of Toronto's by-laws.
- Upon completion all areas will be restored.



CONSTRUCTION AMBASSADOR

We are pleased to introduce the community to our on-the-ground Construction Ambassador who will be available to residents during construction.

Our Construction Ambassador will be available to:

- Complete door-to-door visits prior to open excavation along Main St. and Lumsden Ave. informing residents of what they can expect.
- Identify necessary accommodations and special requirements, and develop real-time solutions.



Construction Ambassador

Jim Goodfellow

TODMORDEN JCT TO LUMSDEN JCT

Shield wire replacement



- Crews will be replacing the overhead shield wire (used to protect equipment from lightning), between Todmorden JCT and Lumsden JCT.
- To prepare for this work, some vegetation removal from tower bases will be required.
- Crews will manually climb tower structures to install hardware.
- Pulling machines will be set up at each junction and temporary safety poles will be installed.
- For public safety, access to areas under the lines will be restricted; signage will be in place to provide information on timing.
- Anticipated timing: February-September (intermittent).

TODMORDEN JCT TO LUMSDEN JCT

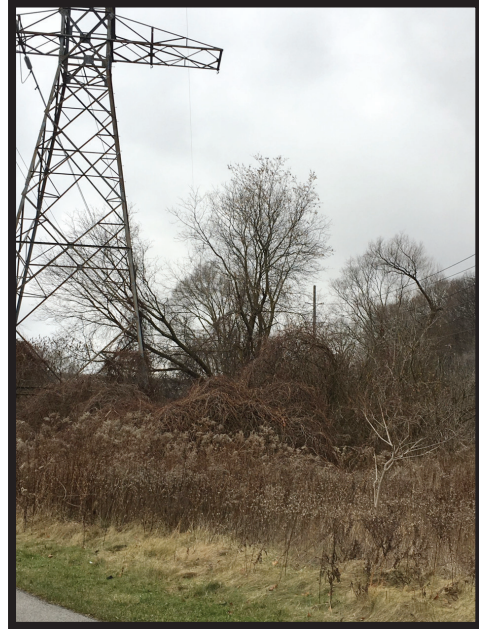
Vegetation Maintenance

Hydro One performs routine vegetation maintenance on its transmission corridors to prevent unnecessary service interruptions and ensure the corridor is safe for our crews and public use.

Maintenance work will include:

- Tower base clearing.
- Removal of incompatible vegetation and invasive species which includes dead, diseased and hazardous trees.
- Trimming and pruning.
- Application of a low-pressure, low-volume, government approved herbicide to cut stems will be considered in some areas to prevent regrowth.
- Anticipated timing: February-March 2018 (intermittent).

HAZARDOUS VEGETATION



- We have coordinated this maintenance work with shield wire preparation activities to minimize impact to the environment and public spaces.
- We will explore options for remediation, where appropriate in collaboration with City of Toronto Forestry and TRCA.
- For public safety, brief restrictions to trails will be in effect.

GIVING BACK TO THE COMMUNITY

We are proud to work in communities across the province to ensure a safe and reliable supply of power.

When undertaking projects like this, our team looks for meaningful ways to give back.

As part of this project Hydro One is committed to implementing a biodiversity initiative.

Our team will look for opportunities to support local environmental projects and opportunities.

We are expecting to hold a workshop in 2018 to collaborate with community members and City officials.



KEEPING IN TOUCH

Being a good neighbour is important to us and we are committed to keeping you informed every step of the way.

Join our mailing list for construction updates, or for more information please contact:

Hydro One's Community Relations team

416-345-6799

Community.Relations@HydroOne.com

Main St. and Lumsden Ave. Construction Ambassador

Jim Goodfellow

For project updates visit our website:

www.hydroone.com/projects/leasidetomain

Thank you for joining us!