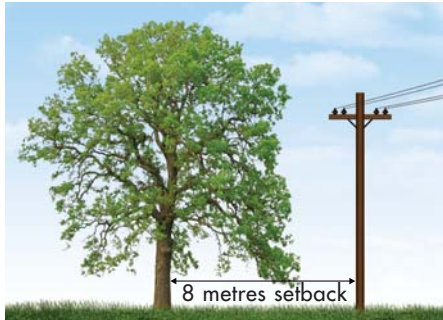


## Keeping lines safe and clear

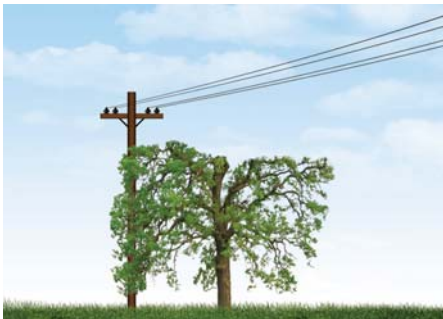
Hydro One takes tree clearance requirements for power lines very seriously. It spends millions each year to ensure lines are kept clear and safe so that Ontarians receive the power they need, when they need it. With 122,000 km of distribution line to maintain, Hydro One forestry services have a big job on their hands. You can help by planting the *right tree* in the *right place* to ensure newly planted trees and shrubs never interfere with nearby power lines.

### Right Tree, Right Place



This tall-growing tree is planted a safe distance from the power line and as it grows, does not interfere with the line.

### Wrong Place



This tall-growing tree is planted in the wrong place and will regularly require costly trimming or removal to maintain line clearance safety standards. This tree should be planted 8 m away from the line.

## Hydro One forestry professionals can help guide property owners to plant the *right tree* in the *right place*

Together, we can work toward reliable electricity service and still enjoy the beauty and value of trees. If you have any questions about proper planting locations or would like Hydro One to locate underground power lines on your property, please call our Customer Communications Centre at 1-888-664-9376.



[www.HydroOne.com](http://www.HydroOne.com)



Partners in Powerful Communities



Partners in Powerful Communities

# Right Tree, Right Place



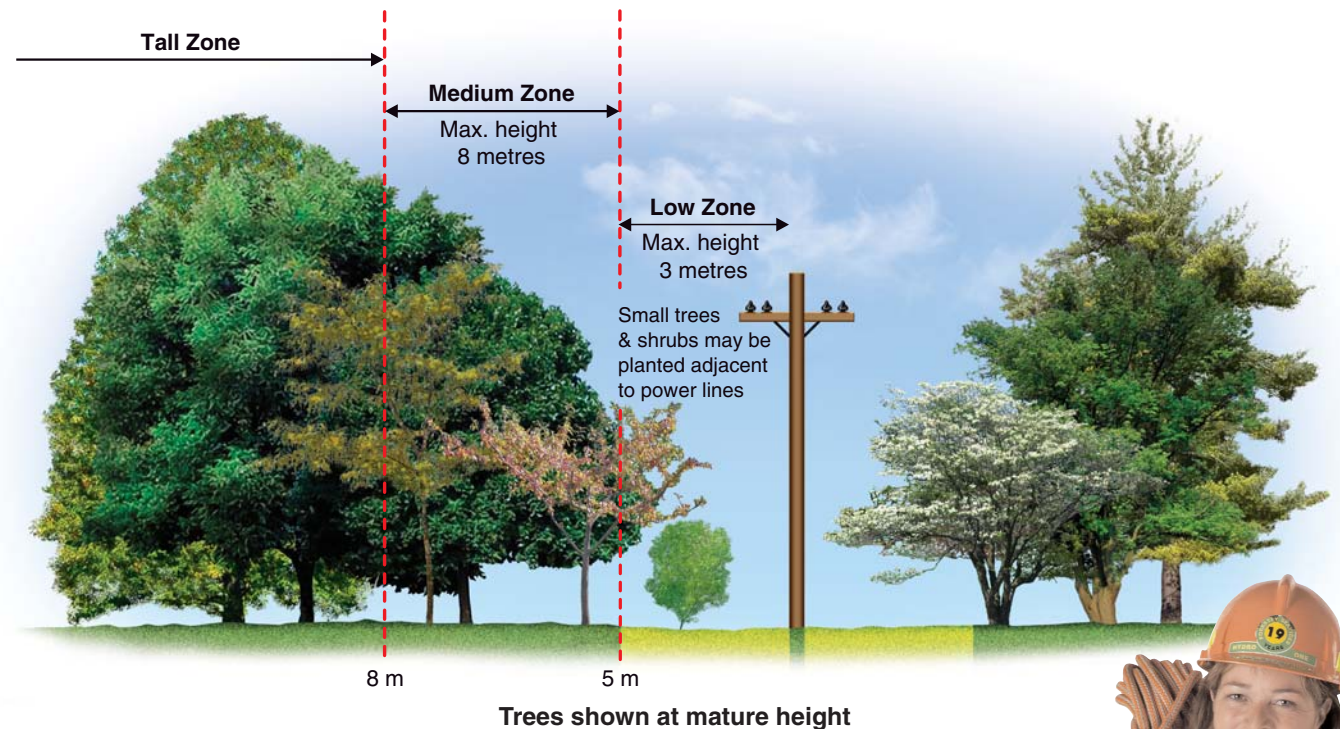
# Plan before planting

Tree contacts account for more than 30 per cent of power outages in Ontario and can also cause fires and property damage. Before you plant trees or shrubs on your property, make sure you are planting the *right tree* in the *right place*. Locate overhead and underground power lines, check the maximum growing height of the species you want to plant and plan the proper planting location. To ensure survival of your new tree, please also consider temperature zone, soil conditions and drainage.



**Hydro One forestry professionals care about the environment and tree health.**

## Planting Zones



### Right tree, right place

Planting trees and shrubs beautifies your property, reduces your heating and cooling costs and produces many environmental benefits. Choose the appropriate planting zone for your new tree.

### Tall zone

The best place to plant tall-growing trees is at least 8 m away from overhead power lines. Tall-growing trees include Colorado spruce, white pine and sugar maple.

### Medium zone

The medium zone is from 5 - 8 m on either side of the distribution lines. Plants in this area should not exceed 8 m at maximum height. Medium-zone trees include serviceberry, ornamental pear and white cedar.

### Low zone

The low zone is directly under the power lines and extends 5 m on either side of the lines. Plants in this area should not exceed 3 m at maximum height. Low-growing trees and shrubs include dogwood, honeysuckle and silverberry. Please keep a 5 m radius around distribution poles clear of vegetation. Plants in this area obstruct maintenance work and emergency restoration efforts.

