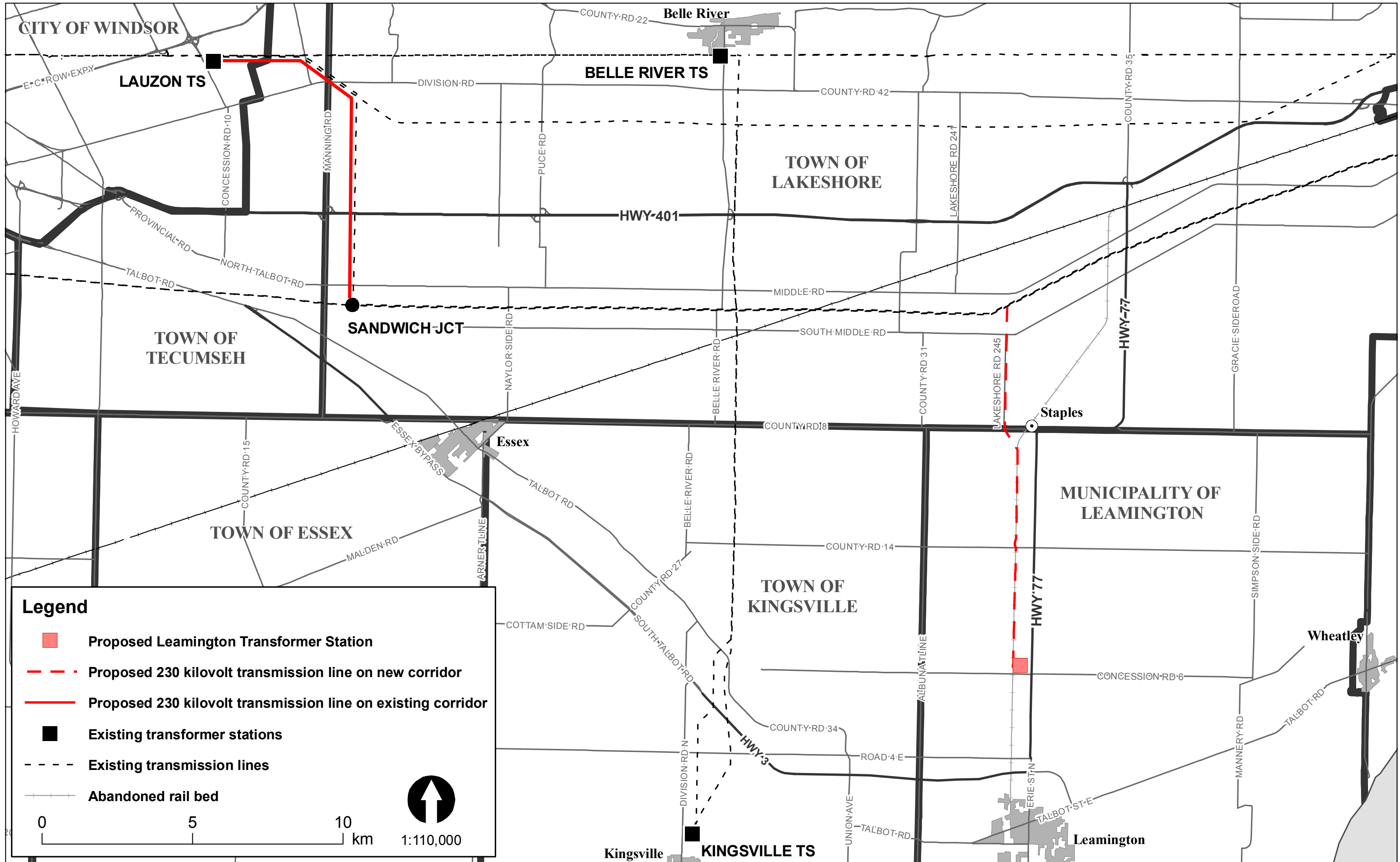


Supply to Essex County: Preferred Transmission Alternative



Legend

- Proposed Leamington Transformer Station
- Proposed 230 kilovolt transmission line on new corridor
- Proposed 230 kilovolt transmission line on existing corridor
- Existing transformer stations
- Existing transmission lines
- Abandoned rail bed

0 5 10 km

1:110,000