

Hydro One Networks Inc.

8th Floor, South Tower
483 Bay Street
Toronto, Ontario M5G 2P5
www.HydroOne.com

Tel: (416) 345-5700
Fax: (416) 345-5870
Cell: (416) 258-9383
Susan.E.Frank@HydroOne.com

Susan Frank

Vice President and Chief Regulatory Officer
Regulatory Affairs



BY COURIER

August 16, 2006

Ms. Kirsten Walli
Secretary
Ontario Energy Board
Suite 2700, 2300 Yonge Street
P.O. Box 2319
Toronto, ON.
M4P 1E4

Dear Ms. Walli:

EB-2002-0424 - Hydro One Networks (H1N) TSC Appln - Compliance of Equipment with Standard and Customer Delivery Point Performance Standards – Revised Process Diagrams

The Board order of July 25, 2005 required Hydro One to amend its Customer Equipment Compliance process. Hydro One filed a revised version of the process on December 15, 2005.

On April 6, 2006 the Board issued another order requiring that the process be further amended to better reflect the July 25 order. Accordingly, Hydro One filed the revised equipment compliance process on May 15, 2006, with amendments as required by the April 6, 2006 order.

The attached Process Diagrams have also been revised in accordance with the April 6 order. The diagrams address the key steps of the Equipment Compliance Process and are intended to assist customers in conjunction with Hydro One's Equipment Compliance Process document.

Sincerely,

A handwritten signature in cursive script that reads "Susan Frank".

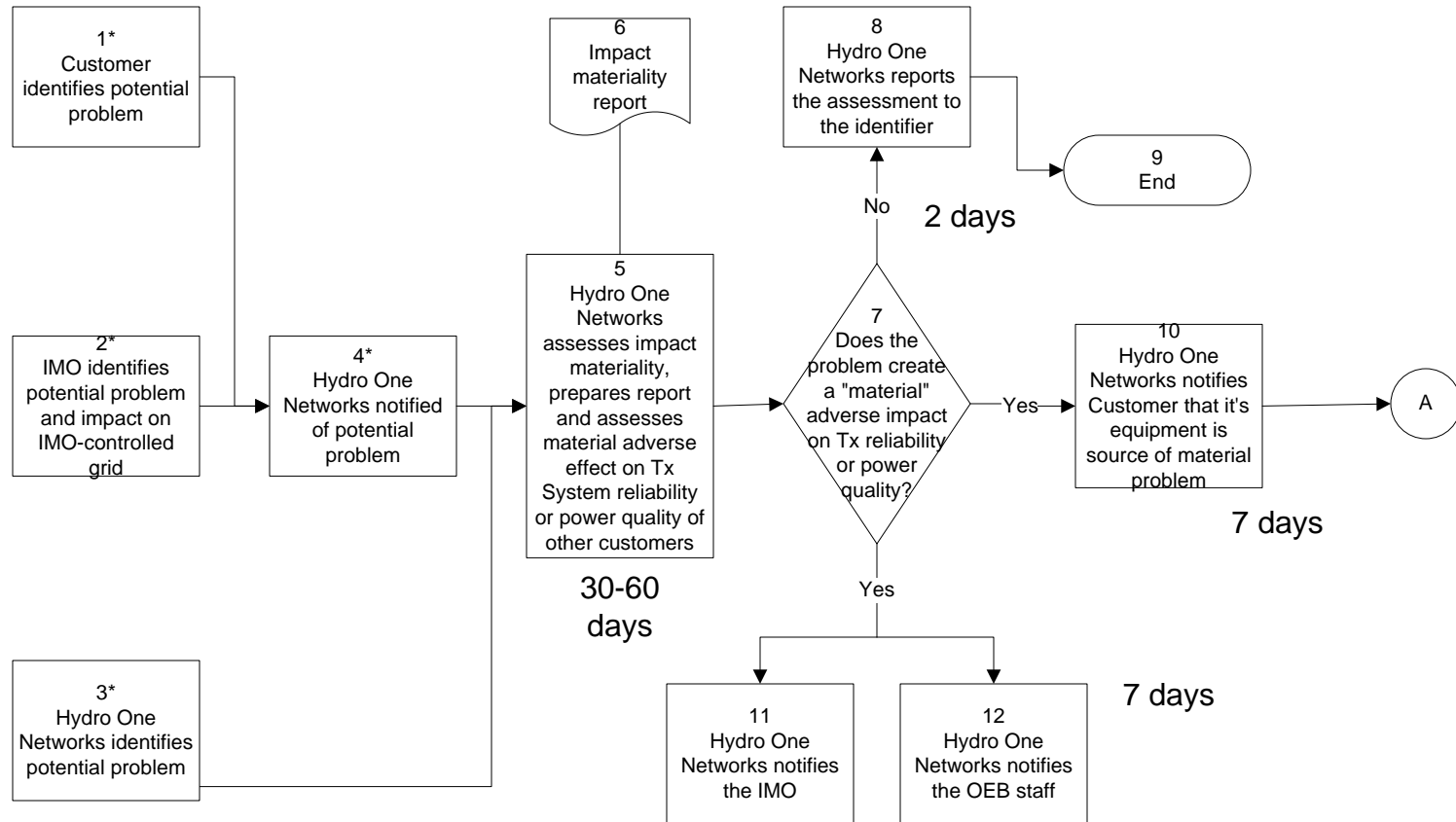
Susan Frank

Attach. (1)

Equipment Compliance Process

These Process Diagrams are intended for use in conjunction with Hydro One's Equipment Compliance Process document

Phase 1 - Problem Identification

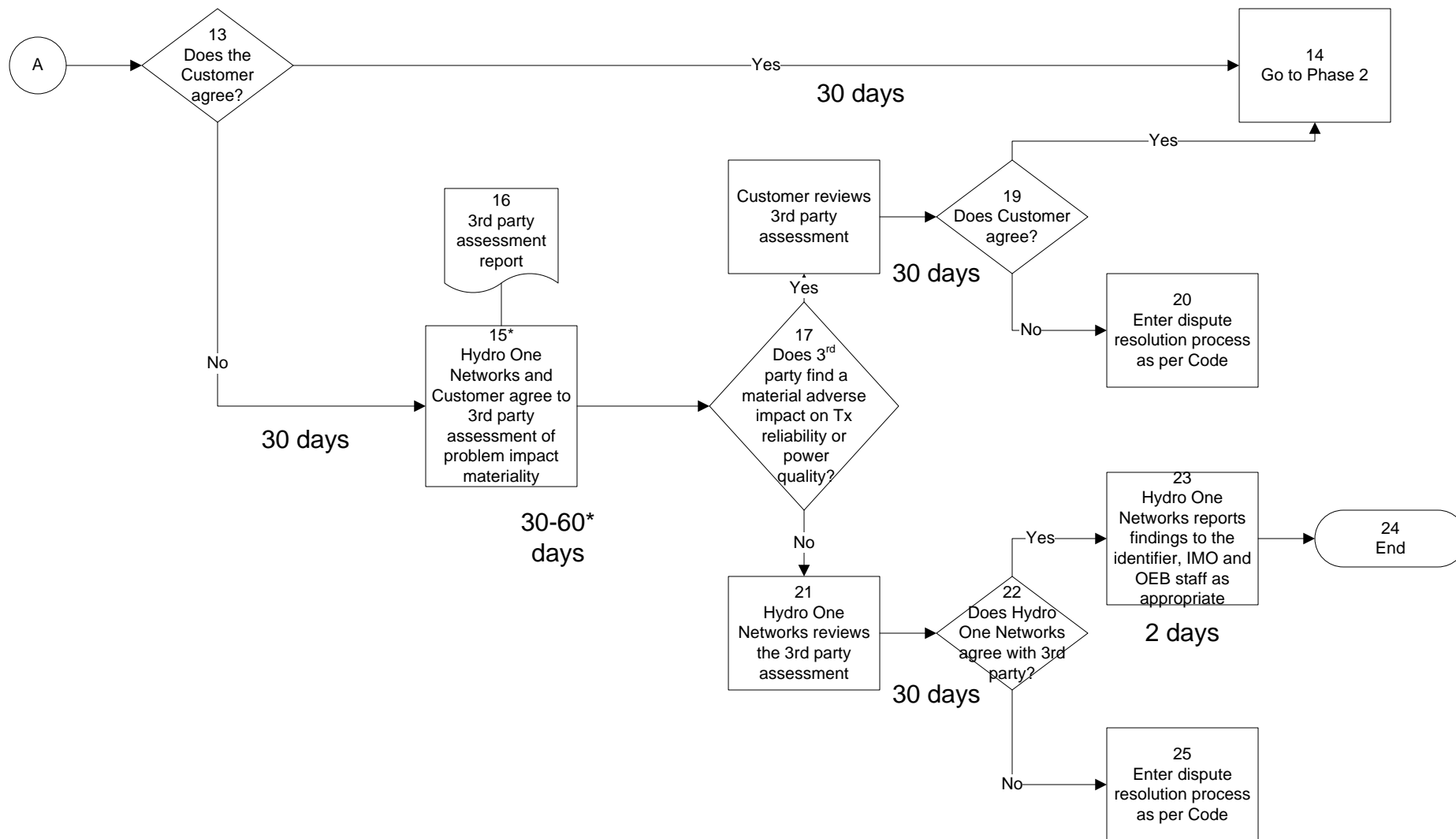


* Boxes 1-4 The problem identified must cause a material deterioration in reliability or a material adverse effect on power quality

Equipment Compliance Process

These Process Diagrams are intended for use in conjunction with
Hydro One's Equipment Compliance Process document

Phase 1 (continued) - Problem Identification

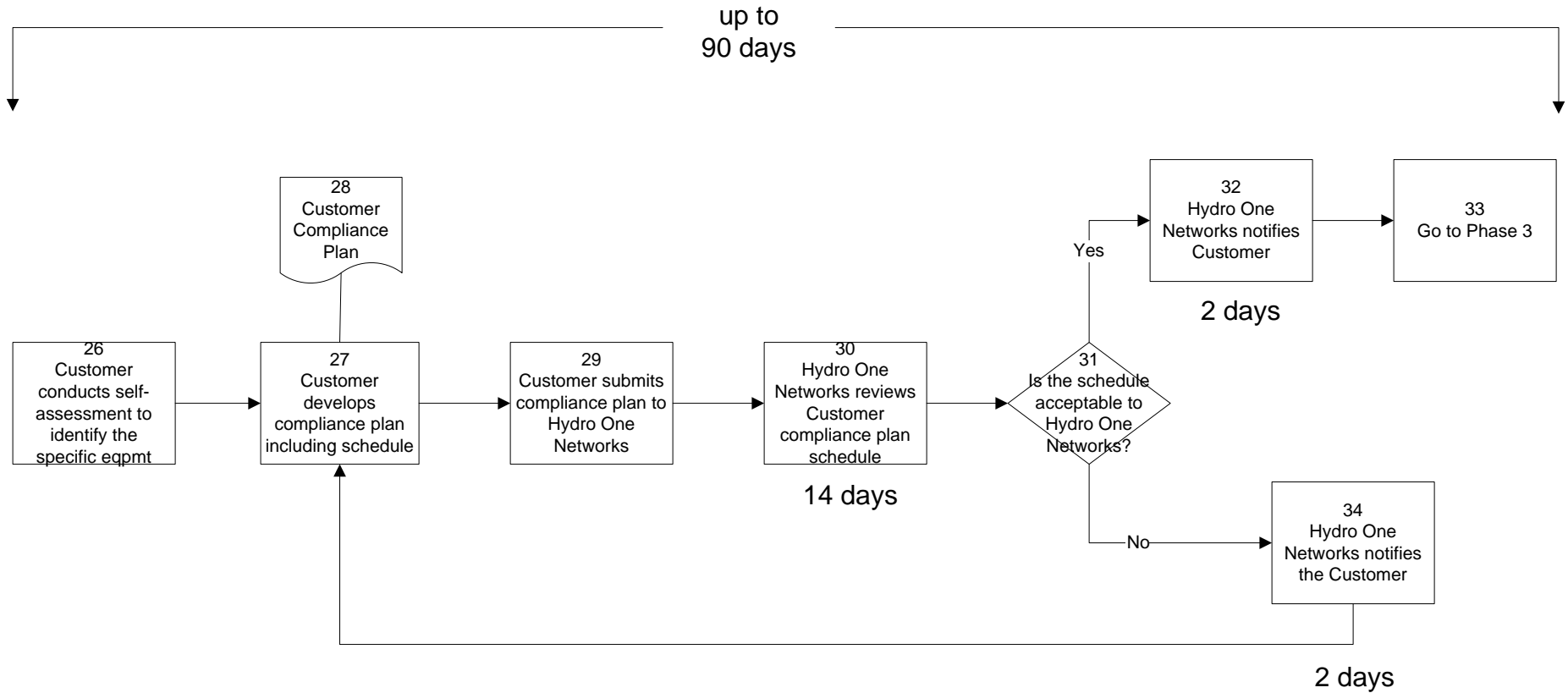


* Boxes 15-17 are optional. The Customer may choose to proceed directly to box 20.

Equipment Compliance Process

These Process Diagrams are intended for use in conjunction with
Hydro One's Equipment Compliance Process document

Phase 2 - Self-Assessment and Compliance Plan Development



Equipment Compliance Process

These Process Diagrams are intended for use in conjunction with
Hydro One's Equipment Compliance Process document
Phase 3 - Compliance Plan Implementation

