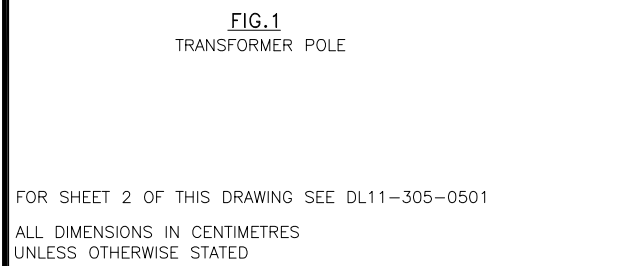


FIG.2 INTERMEDIATE POLE

PARTS LIST			
PART No.	MM No.	DESCRIPTION	QTY.
1	MM#	CONNECTOR, TAP, INSULATION PIERCING	A/R
2	MM#	CONNECTOR, TAP, WEDGE-TYPE	A/R
3	MM#	COVER, CONNECTOR, INSULATING	A/R
4	MM#	BOLT, 3/4"	A/R
5	MM#	CURRENT TRANSFORMER (CT)	1
6	△	PLATE, MOUNTING	1
7	30001989	SCREW, LAG, 1/4" x 2-1/2"	6
8	30007338	CLEVIS BAIL, DEAD-END	A/R
9	30000760	CLEVIS, DOUBLE-EYE	A/R
10	10000058	BOLT-EYE, FOR 3/4" BOLT	A/R
11	30001595	WASHER, 3/4" x 2" x 2"	A/R
12	MM#	CONNECTOR, TAP, WEDGE-TYPE, MINI	4
13	30031685	COVER, CONNECTOR, INSULATING, MINI	2
14	30035166	METERING, 5-JAW COMPLETE KIT WITH TEST SWITCH, PREWIRED	1
15	30000346	PADLOCK	1
16	30017018	CONDUCTOR, INSULATED, CU, #10 AWG, 600V, GRN	A/R
17	30006491	CONNECTOR, TERMINAL, #12-10 AWG. WIRE	1
18	30034591	MOULDING, GROUND WIRE	A/R
19	30013378	STAPLE, 3", MOULDING	A/R
20	30013881	STAPLE, 1-1/2", GROUND WIRE	A/R
21	30034306	CONDUCTOR, CCS, #3 AWG	A/R
22	30030767	CONNECTOR, TAP, WEDGE-TYPE, MINI	2
23	MM#	GRIP, CONDUCTOR, PREFORMED, DEAD-END	A/R
24	MM#	CONNECTOR, TAP, WEDGE-TYPE FOR CCS	1
25	30007255	CONNECTOR, WEDGE-TYPE, FOR #3 AWG CCS	A/R
26	30014480	CONDUCTOR, BARE COPPER, #4 AWG	A/R
MM# = REFER TO SECTION 16 ONLY			A/R = AS REQUIRED
△ = SUPPLIED WITH EQUIPMENT			* = SUPPLIED BY CUSTOMER



FOR SHEET 2 OF THIS DRAWING SEE DL11-305-0501

ALL DIMENSIONS IN CENTIMETRES UNLESS OTHERWISE STATED

Rev No.	Date	Revision Particulars	dwn	ckd	des	app
03	APR 2021	UPDATED FIGURES AND DETAILS NUMBERS TO THE NEW FORMAT. UPDATED NEW FIG.3 LAYOUT. REMOVED DETAIL 'D3' AND NOTE 16. UPDATED PART #22 AND ADDED #25 & #26. ADDED NEW NOTE 16 AND UPDATED FIGURES TO CLARIFY METERING EQUIPMENT SUPPLY.	PC	JF	JF	MM
02	DEC 2018	GENERAL UPDATES. DROPLEAD SIZE LIMITATION REMOVED PER NOTE 1 & DRAWING TITLE EDIT. CHANGED TO NEW DWG. & NUMBERING FORMAT. FOR PREVIOUS REVISIONS REFER TO DL11-305-R1.	SO	PC	MM	DD

Drawn By: MV	Checked By:	Designed By:	Design Approved By:
Scale: N.T.S.	Date: (yyyy/mm/dd)	Pole ID:	

hydro one Hydro One Networks Inc.

© Copyright Hydro One Networks Inc. All rights reserved. This drawing may not be reproduced or copied, in whole or in part, in any printed, mechanical, electronic, film, or other distribution and storage media or used in any information storage or retrieval system outside of Hydro One Networks Inc., without the written consent of Hydro One Networks Inc.

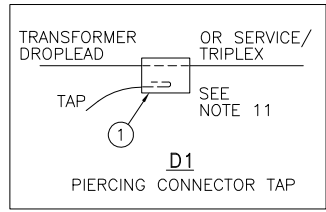
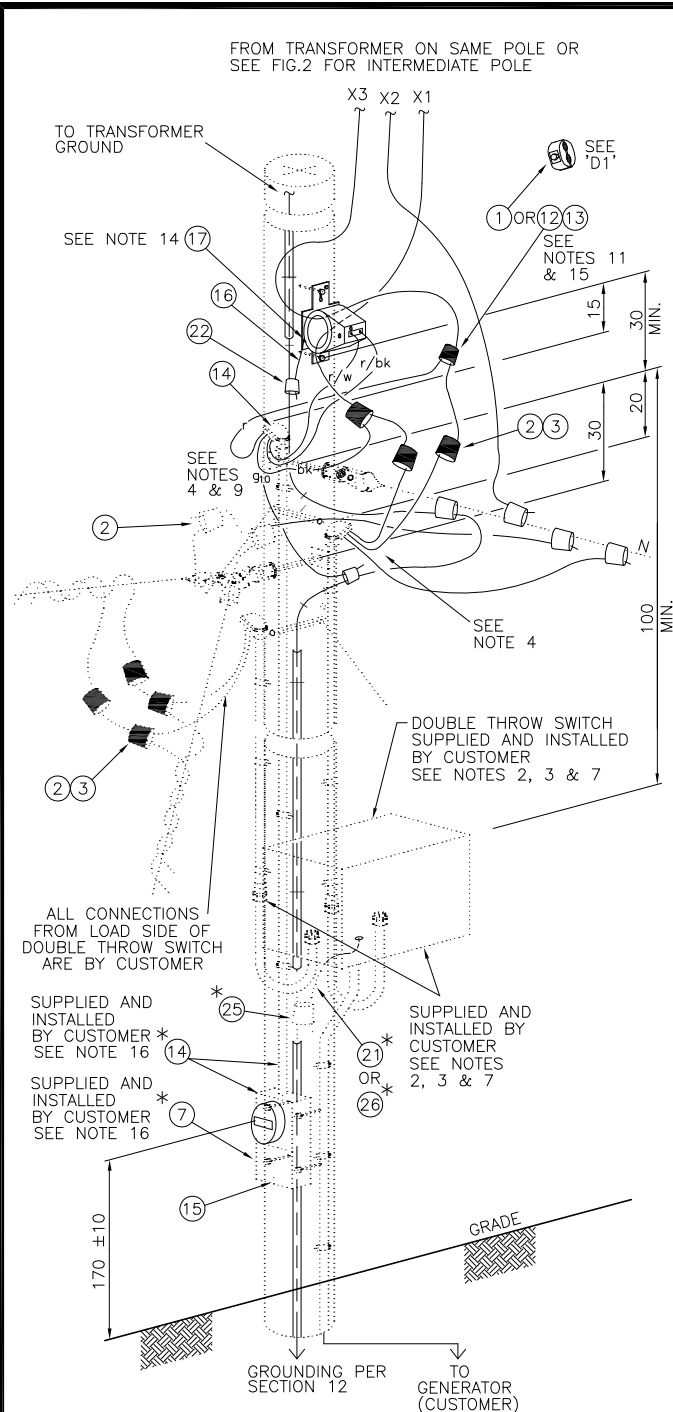
Information contained in this drawing is considered to be confidential. Recipients shall only use the drawing for its intended purpose and shall take necessary measures to prevent disclosure or transmission to outside parties.

Title: CENTRAL METERING FOR SECONDARY DROP LEADS (1-CT ARRANGEMENT) 1Ø, 3-WIRE, 120V/240V

Drawing No. DL11-305-0500

Rev. No. 03

TITLE BLOCK REV 02 – AUGUST 2014



- NOTES:**
1. THIS 1-CT ARRANGEMENT IS THE PREFERRED INSTALLATION. FOR 2-CT ARRANGEMENT USE DL11-307-0500. SEE SUB-SECTION 11-3 TEXT FOR MINIMUM CT INNER DIAMETER REQUIREMENTS.
 2. CONTRACTORS MUST ADHERE TO THE LATEST EDITION OF SECTION 75 OF THE ONTARIO ELECTRICAL SAFETY CODE FOR HARDWARE, LINE MATERIAL AND OTHER DETAILS.
 3. STANDBY GENERATOR SHALL ONLY BE CONNECTED THROUGH THE DOUBLE THROW SWITCH'S EMERGENCY SOURCE SO AS TO PREVENT FEEDBACK ON THE SUPPLY AUTHORITY'S SYSTEM. GENERATION WILL FEED LOAD ONLY WHEN DOUBLE THROW IS SWITCHED AND LOCKED IN THE EMERGENCY SOURCE POSITION.
 4. LEADS AT THE WEATHERHEAD MUST HAVE DRIP LOOPS.
 5. TRANSFORMER DROP LEADS MUST BE COPPER ONLY.
 6. IF NECESSARY, CT CAN BE INSTALLED BELOW THE NEUTRAL. MAINTAIN A MINIMUM OF 15cm FROM THE CT MOUNTING BRACKET BOLTS TO ALL OTHER EQUIPMENT OR PLANT. ENSURE A MINIMUM 1m CLEARANCE IS MAINTAINED FROM LOWEST SUPPLY PLANT TO JOINT USE PARTNER AS PER DL14-102-0500.
 7. SWITCH LOCATION IS TYPICAL ONLY. WHERE APPLICABLE, EQUIPMENT FOR MANUAL OPERATION OF TRANSFER SWITCH CAN BE INSTALLED AT 250cm ABOVE GRADE. ENSURE ALL LEADS ARE MECHANICALLY PROTECTED AND INSTALLED AS PER THE ELECTRICAL SAFETY CODE. CUSTOMER OWNED CONDUIT TO TERMINATE MINIMUM 20cm BELOW NEUTRAL/MESSENGER.
 8. CT'S SHOULD BE INSTALLED SUCH THAT THE CT RATIO CAN BE SEEN FROM THE GROUND.
 9. SEE SECTION RM7 OF RETAIL METERING STANDARDS FOR WIRING DIAGRAMS AND METERING SELECTION TABLES.
 10. UP TO 4 SERVICES MAY BE CONNECTED TO A CM (CENTRAL METERING) SERVICE. SEE SECTION 11 FOR OVERHEAD SERVICE TAPS AND SECTION 8 (OF UNDERGROUND DISTRIBUTION STANDARDS) FOR UNDERGROUND SERVICES.
 11. FOR PIERCING CONNECTORS, IF REQUIRED, DOUBLE UP POTENTIAL LEAD TO OBTAIN ADEQUATE FILL OF THE CONNECTOR GROOVE. DO NOT REMOVE INSULATION FROM EITHER LEAD. REFER TO 'D1'.
 12. CT MOUNTING PLATE REQUIRED ONLY IF NOT ALREADY SUPPORTED WITH CT.
 13. IF CONNECTING SERVICE SEPARATE FROM CM INSTALL, CONNECT SERVICE CABLE TO TRANSFORMER DROP LEADS ABOVE CT.
 14. BOND EQUIPMENT/PLATE USING TERMINAL CONNECTOR ON PLATE/CT CONNECTION BOLTS.
 15. PROVIDE DRIP LOOPS AT ALL INSULATED CONDUCTOR CONNECTIONS.
 16. PART#S MARKED WITH "*" (METER BASE, 3/4" PVC CONDUIT, WEATHER HEAD AND SUPPORTS) ARE CUSTOMER OWNED; METER AND ASSOCIATED WIRING BY HYDRO ONE. MM#S OF SUCH PARTS/KIT ARE FOR HYDRO ONE USE ONLY, IF REQUIRED TO BE SUPPLIED AND INSTALLED BY HYDRO ONE. "*" PARTS SHALL BE INSTALLED PER ONTARIO ELECTRICAL SAFETY CODE.

FIG.3
PROVISIONS FOR STANDBY GENERATOR

FOR SHEET 1 OF THIS DRAWING SEE DL11-305-0500
ALL DIMENSIONS IN CENTIMETRES
UNLESS OTHERWISE STATED

Rev No.	Date	Revision Particulars	dwn	ckd	des	app
02	APR 2021	UPDATED FIGURES AND DETAILS NUMBERS TO THE NEW FORMAT. UPDATED NEW FIG.3 LAYOUT. REMOVED DETAIL 'D3' AND NOTE 16. UPDATED PART #22 AND ADDED #25 & #26. ADDED NEW NOTE 16 AND UPDATED FIGURES TO CLARIFY METERING EQUIPMENT SUPPLY.	PC	JF	JF	MM
02	DEC 2018	GENERAL UPDATES. DROPLEAD SIZE LIMITATION REMOVED PER NOTE 1 & DRAWING TITLE EDIT. CHANGED TO NEW DWG. & NUMBERING FORMAT. FOR PREVIOUS REVISIONS REFER TO DL11-305-R1.	SO	PC	MM	DD

Drawn By: MV	Checked By:	Designed By:	Design Approved By:
Scale: N.T.S.	Date: (yyyy/mm/dd)	Pole ID:	

hydro one Hydro One Networks Inc.

© Copyright Hydro One Networks Inc. All rights reserved. This drawing may not be reproduced or copied, in whole or in part, in any printed, mechanical, electronic, film, or other distribution and storage media or used in any information storage or retrieval system outside of Hydro One Networks Inc., without the written consent of Hydro One Networks Inc.

Information contained in this drawing is considered to be confidential. Recipients shall only use the drawing for its intended purpose and shall take necessary measures to prevent disclosure or transmission to outside parties.

Title:
CENTRAL METERING FOR SECONDARY DROP LEADS (1-CT ARRANGEMENT) 1Ø, 3-WIRE, 120V/240V

Drawing No. **DL11-305-0501** Rev. No. **03**

TITLE BLOCK REV 02 - AUGUST 2014