

FIG. 1

TYPICAL SELF-CONTAINED METER-BASE UP TO 200A SERVICE

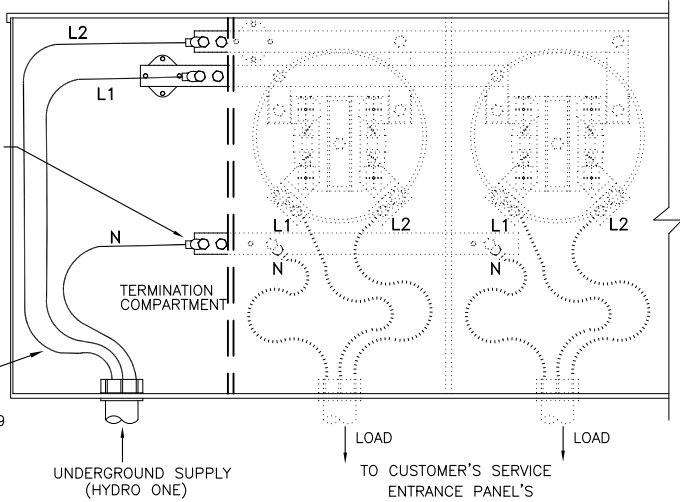


FIG. 2

TYPICAL SELF-CONTAINED MULTI-GANG (MULTI-POSITION) METER-BASE UP TO 200A OR UP TO 400A SERVICE (REFER TO NOTE 3)

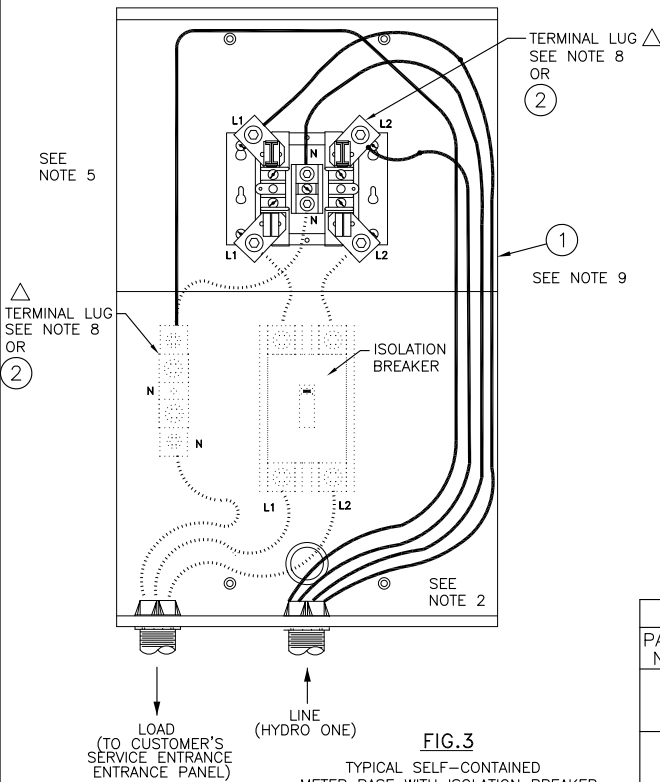


FIG. 3

TYPICAL SELF-CONTAINED METER BASE WITH ISOLATION BREAKER 200A SERVICE

ALL DIMENSIONS IN CENTIMETRES UNLESS OTHERWISE STATED

NOTES:

- CONDUCTORS DEPICTED BY DASHED LINES ARE THE RESPONSIBILITY OF THE CUSTOMER AND ARE ONLY REPRESENTATIVE OF THE CONNECTION REQUIRED AT THE METER BASE TERMINALS. WIRING SHALL CONFORM TO THE RELEVANT SECTION(S) OF THE ONTARIO ELECTRICAL SAFETY CODE (OESC).
- REFER TO METERBASE LIST. CONTACT METERING TECHNICAL SUPPORT FOR MORE INFORMATION.
- ONLY CSA APPROVED HORIZONTAL TROUGH STYLE GANG METER-BASE WITH A MAXIMUM OF SIX (6) METER SOCKETS ARE PERMITTED. A SEPARATE SUPPLY CABLE TERMINATION COMPARTMENT IS REQUIRED FOR UNDERGROUND SERVICES.
- UNDERGROUND METER BASES ARE TO BE OVERSIZED (JUBMO SIZE) TO ACCOMMODATE EXCESS CONDUCTOR SLACK.
- IF THE NEUTRAL CONNECTOR IS INSULATED FROM THE METER BASE HOUSING, A SEPARATE BONDING CONDUCTOR BETWEEN THE SERVICE DISCONNECT AND METER BASE IS REQUIRED.
- ALL METER BASES TO MAINTAIN MINIMUM CLEARANCES TO COMBUSTIBLE GAS RELIEF DISCHARGE DEVICES OR VENTS AS FOLLOWS:
 - 1m FROM NATURAL GAS. IF 1m CLEARANCE IS NOT AVAILABLE IT CAN BE REDUCED TO 0.3m MINIMUM CLEARANCE WHICH IS ONLY APPLICABLE IF REGULATORS EQUIPPED WITH CERTIFIED OVERPRESSURE CUT-OFF/SHUT-OFF WITH LIMITED OR NO RELIEF IS INSTALLED FOR THE GAS DISCHARGE OPENING. THE OVERPRESSURE RELIEF DEVICES MUST BE MARKED "LR-OPCO", "P-OPCO" OR "OPCO", AND
 - 3m FROM PROPANE GAS.
- ALL METER BASES AND SUPPLY CONDUITS ARE TO BE SURFACE MOUNTED PER HYDRO ONE STANDARDS. METER BASES/CONDUITS CONCEALED IN WALLS, ENCLOSED IN CABINETS OR OTHERWISE OBSTRUCTED ARE NOT PERMITTED.
- LINE SIDE TERMINATION:
 - USE TUNNEL TYPE CONNECTOR (MAXIMUM 250kcmil SINGLE OR 3/0AWG SINGLE RUN) FOR UP TO 200A, OR
 - USE TUNNEL TYPE CONNECTOR (MAXIMUM 500kcmil SINGLE OR 250kcmil PARALLEL RUN) FOR UP TO 400A.
- DRAW ADDITIONAL 2ft. OF CONDUCTOR INTO THE METER BASE TO PROVIDE EXCESS SLACK IN THE EVENT OF GROUND SETTLEMENT.

PARTS LIST

PART No.	MM No.	DESCRIPTION	QTY.
1	30005908	SERVICE CABLE, 3/0 AWG, 3-COND., AL.	A/R
	30005915	SERVICE CABLE, 250Kcmil, 3-COND., AL.	
	30005959	SERVICE CABLE, 500Kcmil, 3-COND., AL.	
2	30006404	CONNECTOR, COMPRESSION, 1-HOLE, FOR 3/0 AWG AL.	A/R
	30006405	CONNECTOR, COMPRESSION, 1-HOLE, FOR 250 KCMIL AL.	
	30032559	CONNECTOR, COMPRESSION, 1-HOLE, FOR 500 KCMIL AL.	
MM# = REFER TO SECTION 16 ONLY		A/R = AS REQUIRED	
△ = SUPPLIED WITH EQUIPMENT			

01	SEPT 2023	THIS NEW DRAWING CONSISTS OF APPLICABLE CONTENT FROM RM7-301-0500-R4 AND OTHER RELEVANT CONTENT FOR 200A AND 400A TYPICAL UNDERGROUND SECONDARY SERVICE CABLE TERMINATIONS AT METER BASE.	PC	MM	MM	MM
Rev No.	Date	Revision Particulars	dwn	ckd	des	app

Drawn By: PC	Checked By: M.MATEVSKI	Designed By: M.MATEVSKI	Design Approved By: M.MATEVSKI P.Eng.
Scale: N.T.S.	Date: (yyyy/mm/dd) 2022/05/16	Pole ID:	

hydro one **Hydro One Networks Inc.**

© Copyright Hydro One Networks Inc. All rights reserved. This drawing may not be reproduced or copied, in whole or in part, in any printed, mechanical, electronic, film, or other distribution and storage media or used in any information storage or retrieval system outside of Hydro One Networks Inc., without the written consent of Hydro One Networks Inc.

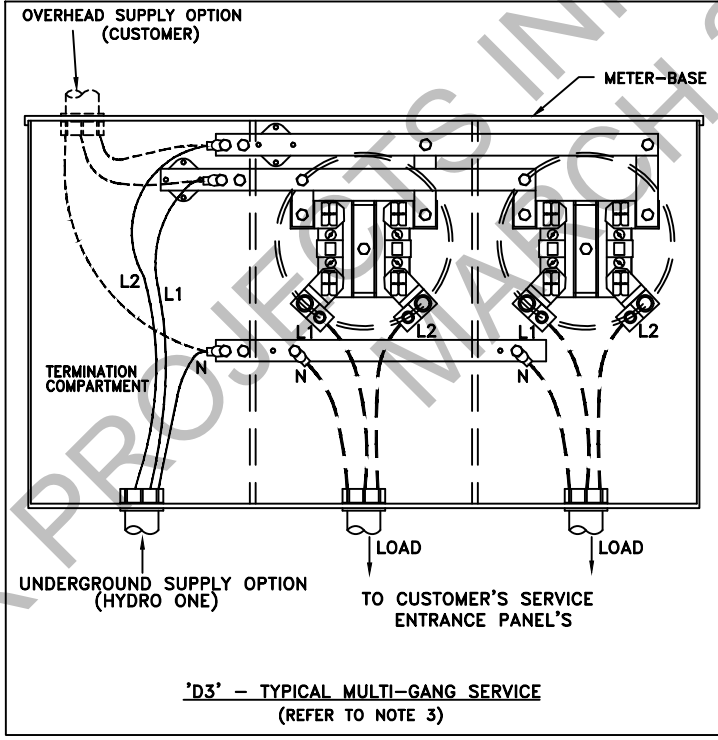
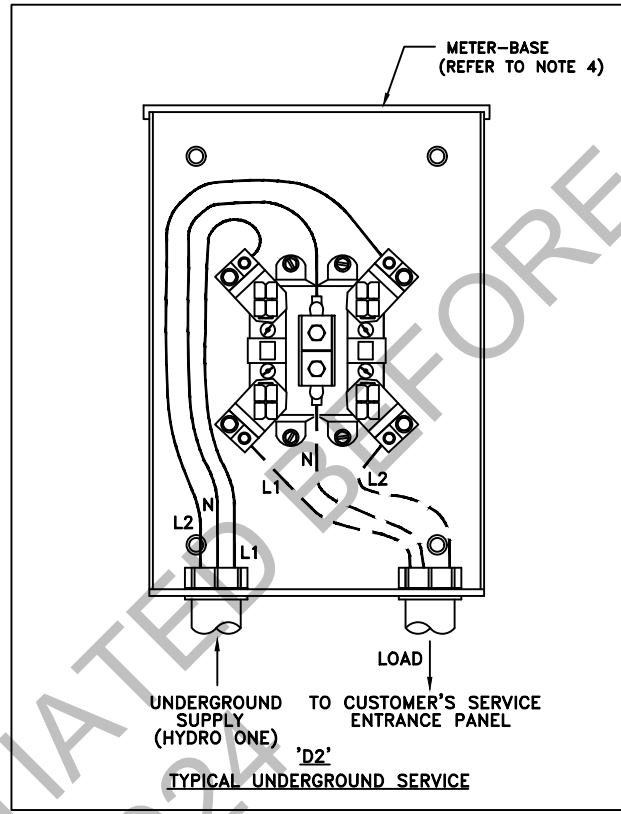
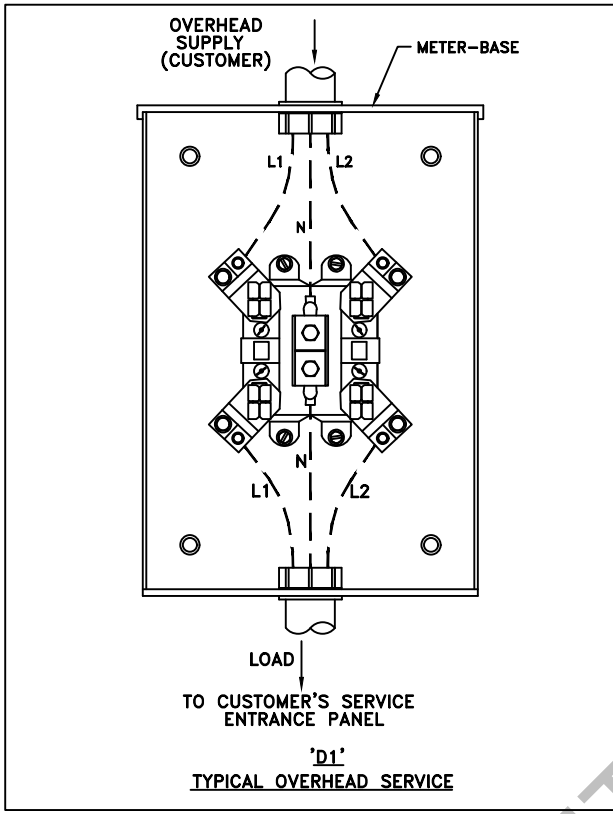
Information contained in this drawing is considered to be confidential. Recipients shall only use the drawing for its intended purpose and shall take necessary measures to prevent disclosure or transmittal to outside parties.

Title:
TYPICAL UNDERGROUND SECONDARY SERVICE CABLE TERMINATIONS AT THE METER BASE UP TO 200A OR UP TO 400A, 1Ø, 120/240V, 3-WIRE

Drawing No.
DU11-111-0500

Rev. No.
01

TITLE BLOCK REV 02 - AUGUST 2014



- NOTES:**
1. CONDUCTORS DEPICTED BY DASHED LINES ARE THE RESPONSIBILITY OF THE CUSTOMER AND ARE ONLY REPRESENTATIVE OF THE CONNECTION REQUIRED AT THE METER-BASE TERMINALS. WIRING SHALL CONFORM TO THE RELEVANT SECTION(S) OF THE ONTARIO ELECTRICAL SAFETY CODE (OESC).
 2. REFER TO METER-BASE LIST. CONTACT METERING TECHNICAL SUPPORT FOR MORE INFORMATION.
 3. ONLY CSA APPROVED HORIZONTAL TROUGH STYLE GANG METER-BASES WITH A MAXIMUM OF SIX METER SOCKETS ARE PERMITTED. A SEPARATE SUPPLY CABLE TERMINATION COMPARTMENT IS REQUIRED FOR UNDERGROUND SERVICES.
 4. UNDERGROUND METER-BASES ARE TO BE JUMBO SIZE ONLY.
 5. IF THE NEUTRAL CONNECTOR IS INSULATED FROM THE METER-BASE HOUSING, A SEPARATE BONDING CONDUCTOR BETWEEN THE SERVICE DISCONNECT AND METER-BASE IS REQUIRED.
 6. ALL METER-BASES TO MAINTAIN CLEARANCES TO COMBUSTIBLE GAS RELIEF DISCHARGE DEVICES OR VENTS AS FOLLOWS: 1M FOR NATURAL GAS AND 3M FOR PROPANE GAS.
 7. ALL METER-BASES AND SUPPLY CONDUITS ARE TO BE SURFACE MOUNTED PER HYDRO ONE STANDARDS. METER-BASES ENCLOSED IN CABINETS OR OTHERWISE OBSTRUCTED ARE NOT PERMITTED.

04	AUG 2021	GENERAL UPDATES. CHANGED TO NEW DWG. & NUMBERING FORMAT. FOR PREVIOUS REVISION REFER TO RM7-14.1-0500.	GJ	PC	MS	MS
03	DEC 2016	CHANGED TO NEW DWG. & NUMBERING FORMAT FOR PREV. REVS REFER TO RM7-14.1-R2. REVISED NOTES AND ADDED NOTE B.	PC	MM	MM	RK
Rev No.	Date	Revision Particulars	dwn	ckd	des	app

Drawn By: VD	Checked By:	Designed By:	Design Approved By:
Scale: N.T.S.	Date: (yyyy/mm/dd) 2011/09/24	Pole ID:	

hydro one Hydro One Networks Inc.

© Copyright Hydro One Networks Inc. All rights reserved. This drawing may not be reproduced or copied, in whole or in part, in any printed, mechanical, electronic, film, or other distribution and storage media or used in any information storage or retrieval system outside of Hydro One Networks Inc., without the written consent of Hydro One Networks Inc.

Information contained in this drawing is considered to be confidential. Recipients shall only use the drawing for its intended purpose and shall take necessary measures to prevent disclosure or transmittal to outside parties.

Title:
**SOCKET METER-BASE, SINGLE & GANGED
1PH, 3W, 120/240V, CONSTRUCTION DWG
UP TO 200A, SELF-CONTAINED**

Drawing No. **RM7-301-0500**

Rev. No. **04**

TITLE BLOCK REV 02 - AUGUST 2014