

Keeping Power Lines Safe and Reliable

VEGETATION MANAGEMENT STANDARDS

PROJECT AREA IN KANATA
Marchwood TS to the Queensway



Partners in Powerful Communities

ONTARIO'S ELECTRICITY CORRIDORS

Hydro One is Ontario's largest transmitter of electricity. Hydro corridors occupy 82,000 hectares of land in the province. In addition to housing electricity equipment, the corridors serve a number of purposes, including parking and community green spaces.

This brochure is a quick look into Hydro One's Transmission Vegetation Management Program – the policies we use to manage the plant communities in our corridors while balancing the need for a safe, reliable power grid.



Trees and wires

Our hydro corridors are often home to diverse plant communities, unique environments and complex ecologies. If left unmanaged, some plant species could grow into the electrical equipment. If a species grows too high or too close to our equipment, we call them “incompatible” because they threaten the safe operation of the line, and could cause a power outage or endanger our workers and the public.

How we plan our vegetation work

Hydro One is the only utility in North America with a dedicated in-house vegetation management team. Our skilled and environmentally responsible technicians consider the following when creating tree maintenance plans to protect against outages:

- Ensure vegetation won’t interfere with the safe operation of equipment or safety of our workers
- Maintain power reliability and public safety along the transmission corridors
- Prioritize work based on vegetation condition, reliability and customer influences
- Incorporate community input, sustainable energy development, and environmental, ecological and social impacts

Our approach to vegetation maintenance works to balance safety, reliability, environmental responsibility, value to customer, and community interest.

Our techniques

If we identify vegetation that requires maintenance, techniques could include tree trimming, hazard tree identification and removal, manual brush cutting, mechanical brush control and herbicide use. Hydro One always seeks landowner permission before the targeted application of low volume, government approved herbicide.



Determining tree clearance

Our highly-skilled arborists maintain vegetation to provide sufficient clearances from electrical equipment. Vegetation removal is based on tree species, growth patterns, topography, line voltage, and line sag and sway. Establishing proper clearance on the line is important for power reliability, and to ensure public and worker safety as mandated by the Ontario Occupational Health and Safety Act and Regulations.

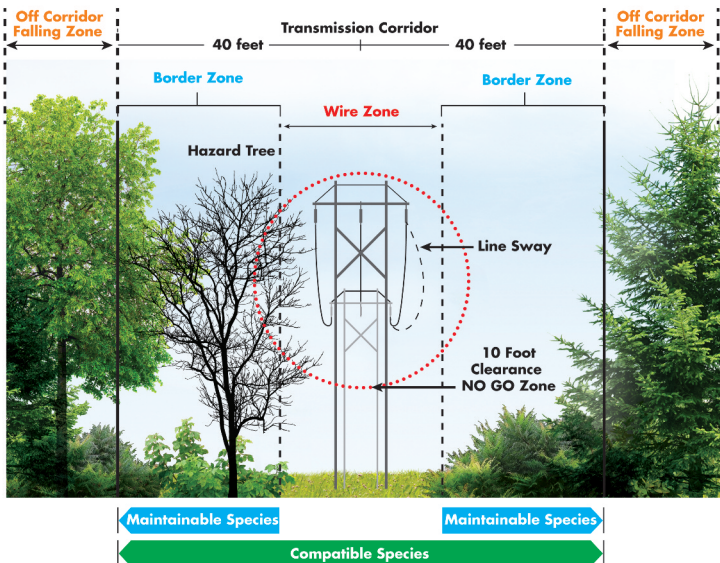
Working together

Before any work occurs on a section of transmission line, a Hydro One forestry representative will assess the area and determine the work that needs to be completed. We will notify adjacent property owners and affected landowners that will require tree trimming, tree removals, brush removals, herbicide application or access on their property. In cases with absentee landowners, every effort is made to contact the owners or their representatives.

In the event of emergency work due to safety or power reliability, notification of the landowner may be waived; however, Hydro One is committed to communicating after the emergency to discuss remedial work and answer questions.

Long term planning

All of our forestry work takes into consideration a longer-term plan for maintaining vegetation. In between scheduled maintenance visits, our teams check the corridor vegetation to ensure no trees threaten the safety of the line, or require treatment prior to the next scheduled visit.



Beaverbrook/Kanata Maintenance Plan

Since our last scheduled maintenance visit in 2012, some vegetation along the transmission corridor in the Beaverbrook community has reached a height that poses an imminent risk to the safe, reliable operation of the line.

Starting in August 2017, Hydro One began meeting with community members, the Kanata Beaverbrook Community Association (KBCA), and local officials. These meetings helped our forestry team develop a customized work approach.

- 1. More frequent maintenance:** Hydro One will temporarily move to a three-year cycle in 2018 and 2021 to minimize the degree of trimming as we work towards establishing a sustainable corridor. This will allow homeowners to replant compatible vegetation on the corridor as identified by Hydro One. Starting in 2024, maintenance will return to the standard six-year cycles.
- 2. Treatment of wire zone versus border zone:** Hydro One will perform site specific assessments to determine vegetation compatibility. Maintenance in the wire zone and border zone will be treated differently.
- 3. Lead time to transplant:** Homeowners have until June 1, 2018 to transplant vegetation on their property that Hydro One has deemed incompatible.
- 4. Maintainable Vegetation Agreement:** Hydro One will consider offering a Maintainable Vegetation Agreement for property owners with easements who have hedges on their land.
- 5. Compatible Species List:** Hydro One will share a compatible species list specific to this project on our website.

GETTING IN TOUCH

For project updates visit our website at
www.HydroOne.com/Beaverbrook

CONTACT US

Ani Bekmezian

Tel: 1-877-345-6799

E : Community.Relations@HydroOne.com

