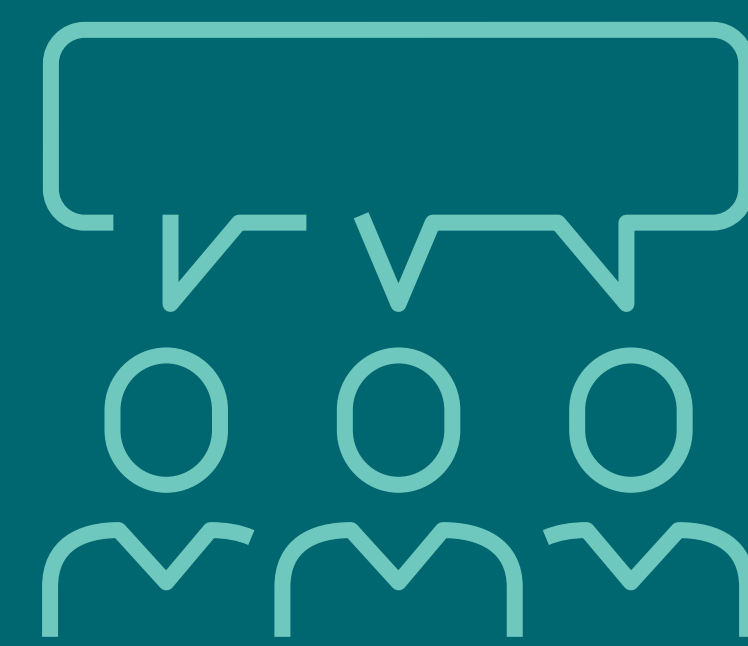
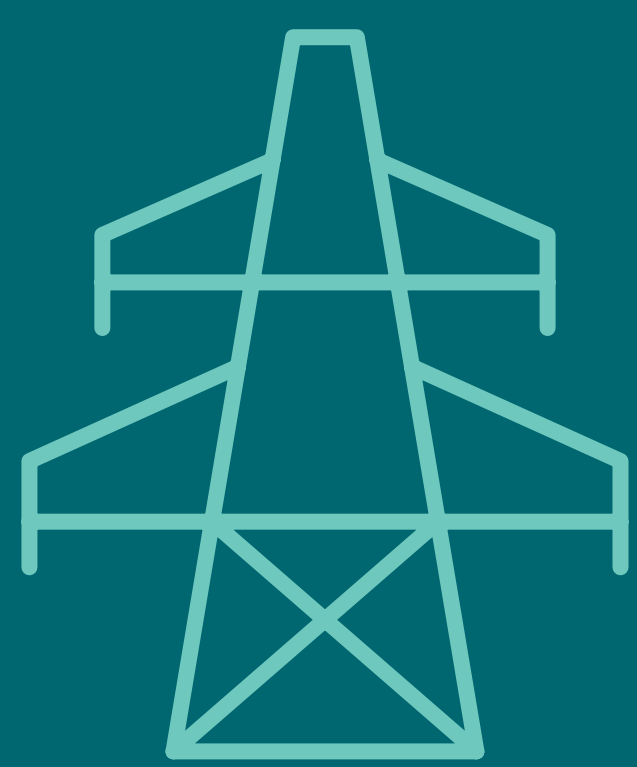


Welcome

Bowmanville to East GTA Power Line project

Community open house #1



Connecting power
and possibility™

Purpose of today's community open house

- Provide an overview of the electricity system
- Outline central Ontario's increasing electricity needs
- Introduce the Bowmanville to East GTA Power Line project
- Share what's involved in the project planning process
- Explain the Class Environment Assessment process
- Share the anticipated project timeline
- Answer questions and gather your feedback



Key organizations

Building infrastructure to meet the energy needs of today and tomorrow involves a number of partners, including:



Ministry of the Environment,
Conservation and Parks

Legislative authority for environmental assessments in Ontario.

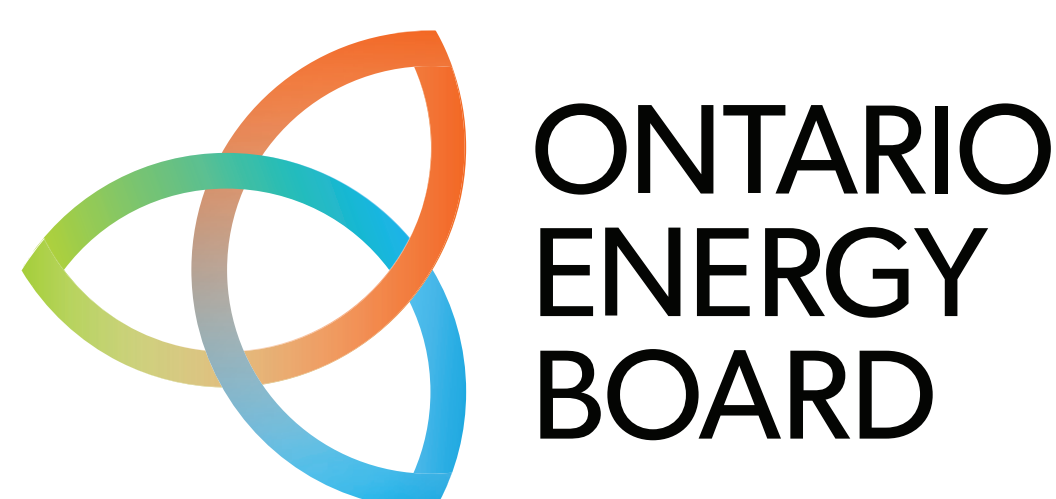


Independent Electricity
System Operator

Oversees planning to ensure electricity needs are met both now and in the future.



Builds, owns, operates and maintains electricity transmission and distribution facilities across Ontario.



Regulates the electricity market in Ontario, including electricity rates.

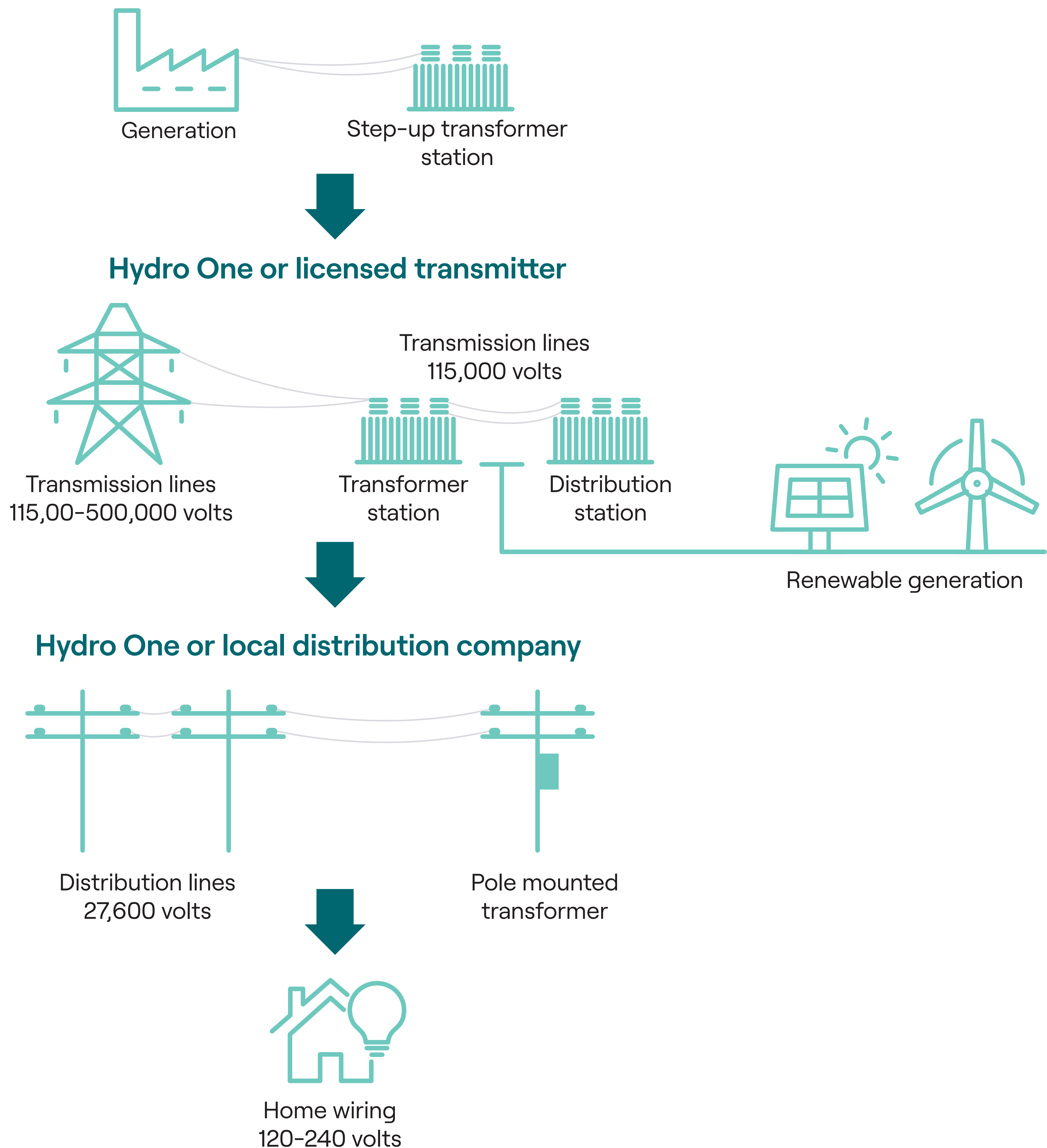


Ministry of Energy

Oversees the regulatory framework for the electricity system, including the Ontario Energy Board and the IESO.

How the system works

Ontario Power Generation and private generation companies



Electricity needs in central Ontario

Ontario's long-term need for electricity is increasing, as is the investment required to strengthen the system.

The Independent Electricity System Operator (IESO) projects that demand in the East Greater Toronto Area could rise faster than in other parts of the province.

As an Ontario-based company, Hydro One is investing in new infrastructure in the region to support future economic growth as new businesses and industry connect to the grid and create jobs.

For more information on the other projects in the region, please visit [HydroOne.com/projects](https://www.hydroone.com/projects)



Overview of the Bowmanville to East GTA Power Line project

The proposed Bowmanville to East GTA Power Line includes a new 45-kilometre double-circuit 500-kilovolt transmission line from the Bowmanville Switching Station in Clarington to Cherrywood Transformer Station in Pickering.

The need for this proposed new line was identified by the Independent Electricity System Operator to increase the amount of power that can be delivered to the region and strengthen the local grid to support long-term growth.

We are beginning a Class Environmental Assessment (EA) for the project, under the Ontario *Environmental Assessment Act*.

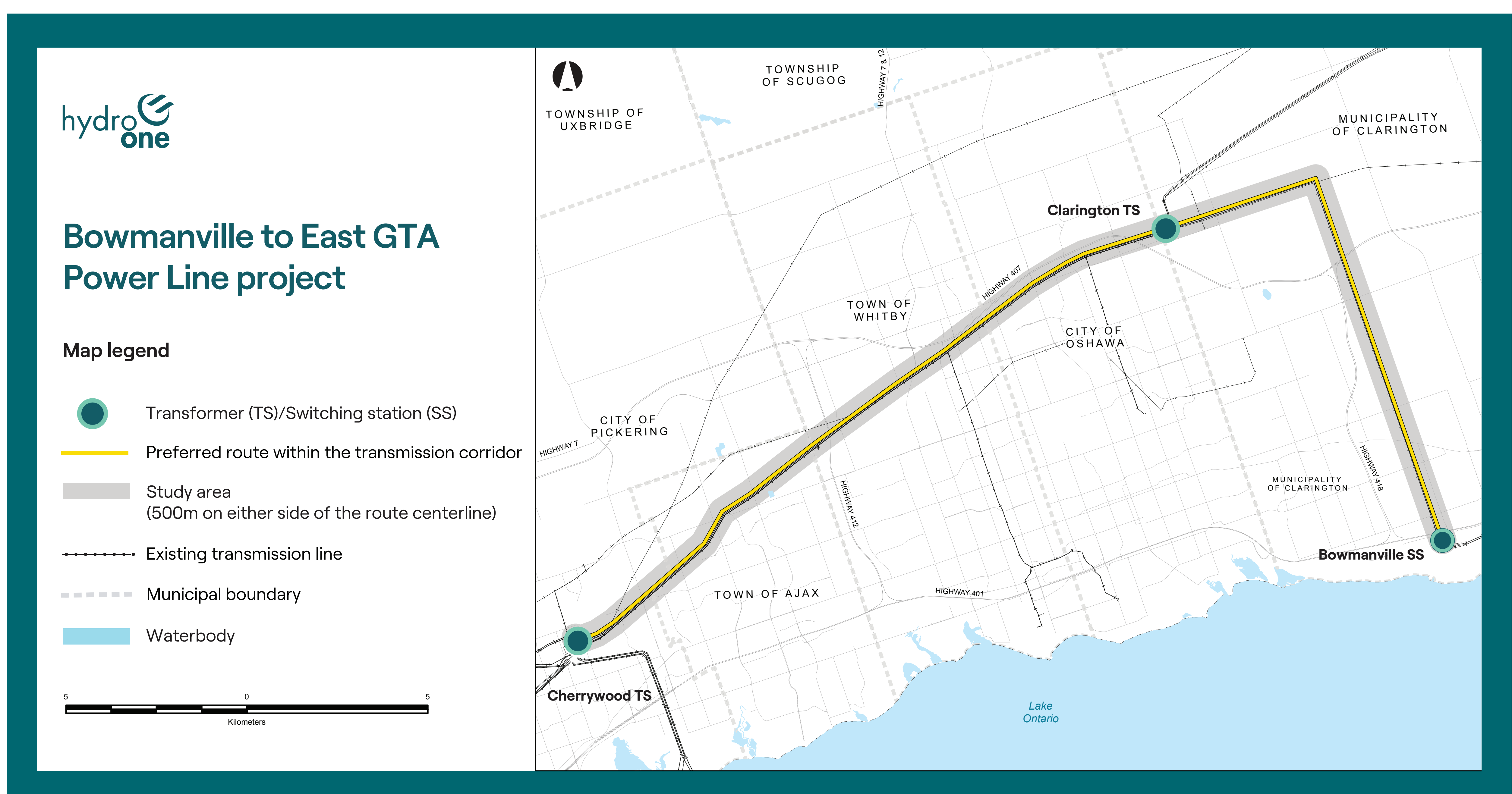
Following the completion of the Class EA, the project will also require Ontario Energy Board approval under Section 92 (Leave to Construct) of the *Ontario Energy Board Act*.



Map of project area preferred route

To identify the preferred route, Hydro One mapped Indigenous community values, technical, socio-economic, and natural environment constraints which included looking for opportunities to use existing transmission corridor lands. Through this process, one viable route was identified for the proposed project. The full length of the preferred route is located within an existing transmission corridor to help reduce environmental and community impacts.

The proposed project includes associated station upgrades, expansions and relocations of existing transmission infrastructure where required.

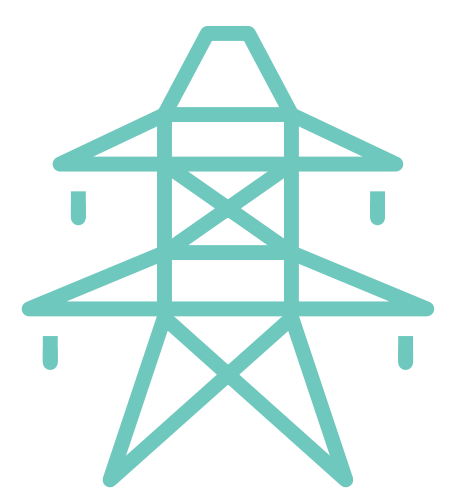


Regional benefits

Once built, the Bowmanville to East GTA Power Line is expected to:



Support new businesses and industry that want to invest here, fostering long-term economic growth and jobs in central Ontario



Provide safe and reliable electricity where and when it's needed in your community



Strengthen community resilience by supporting the essential services and infrastructure you rely on every day



Create new opportunities for collaboration, capacity building and partnerships with local Indigenous communities

What is a Class Environmental Assessment?

The Class Environmental Assessment (EA) is the first step towards completing the planning for this project. This project is subject to Hydro One's Class EA for Transmission Facilities (2024).

This Class EA process applies to transmission infrastructure projects that are carried out routinely and have predictable environmental effects that can be readily managed and considered before construction.

As required by the Class EA process, all project planning will be shaped by:



Engagement with government agencies, municipalities and elected officials, residents and other interest groups



Working with Indigenous communities to identify areas of interest pertaining to culture, values and land use



Characterization of the environment within the study area



Identification of potential effects and proposed mitigation measures



Evaluation of preferred route



A 30-day public review period following the release of the Environmental Study Report

More information is available at: HydroOne.com/ClassEA

Preferred route evaluation

Over the course of the Class EA, we will focus on studying and learning more about the preferred route by collecting data from a variety of sources, conducting environmental surveys and technical assessments. We will also hold a wide range of engagement opportunities to gather input and feedback.

Through this process, we will evaluate the proposed route based on criteria in the four categories below:



Indigenous culture, values and land use

- Areas of significance identified by First Nations
- Water features, woodlots, plants and vegetation of significance to First Nations
- Identified potential impacts to treaty rights



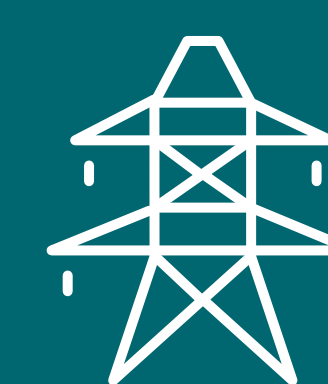
Socio-economic environment

- Agricultural resources
- Property impacts
- Water wells and source water protection
- Co-location of existing infrastructure



Natural environment

- Surface water and aquatic habitat
- Vegetation
- Wildlife and wildlife habitat
- Species at risk




Technical and cost

- Line length and angle structures
- Construction complexity
- Operability
- Real estate and land rights considerations

*not an exhaustive list of examples in each category

Project development timeline

- 
- A vertical timeline graphic consisting of a teal line with circular markers. The top marker is a solid teal circle, while the others are hollow circles with teal outlines. The markers are connected by a thin teal line.
- Spring 2026**
Notice of Commencement and community open house #1
 - Spring 2026**
Environmental field studies and research to support the Class EA
 - Early 2027**
Community open house #2
 - Spring 2027**
Draft Environmental Study Report (ESR) for 30-day public comment period
 - Fall 2027**
Finalize ESR to complete the Class EA
 - 2028**
Complete detailed design and obtain project permits and approvals, including the Leave to Construct (Section 92) from the Ontario Energy Board
 - 2029**
Proposed construction start
 - 2032**
Line in service

* Subject to change. In order to meet the electricity needs of the region as quickly as possible, we are looking for opportunities to advance some milestones.

Community engagement

Early, meaningful and open engagement helps shape our project planning. We will listen to the community as we expand our electrical infrastructure to bring more power to central Ontario.

We will host a series of engagement opportunities to gather input and feedback, which is critical as we plan the project. We will continue to keep communities, residents and members of the public involved in our planning and project activities.

We encourage you to sign up for our project contact list at **HydroOne.com/BowmanvilleEastGTA**



Working with Indigenous communities

At Hydro One, we work to build and maintain respectful, positive relationships with Indigenous communities across Ontario.

Forging meaningful relationships with Indigenous communities based upon trust, confidence, and accountability is vital to building partnerships and advancing Reconciliation.

Our engagement, advocacy and strategic direction are set by the Indigenous Relations Policy and led in collaboration with the Indigenous communities we work with every day.

This proposed project will be delivered through Hydro One's First Nation Equity Partnership Model.

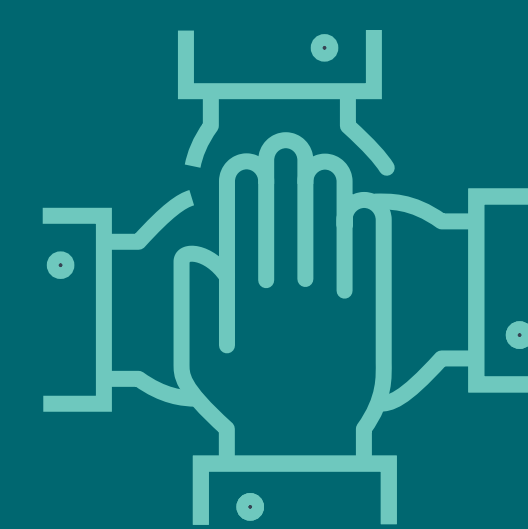
Learn more at HydroOne.com/IndigenousRelations



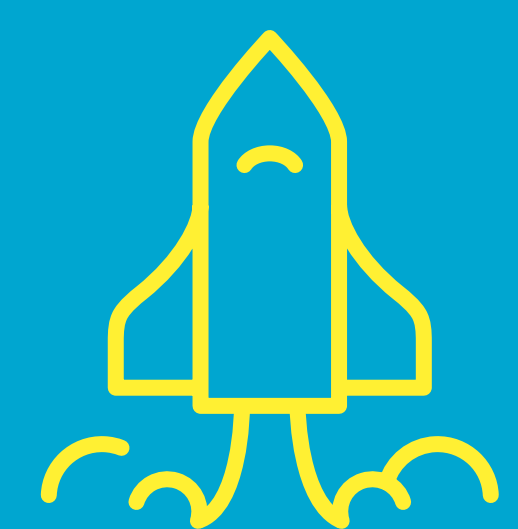
Excelling at
engagement



Working with
integrity



Holding
ourselves
accountable



Breaking
barriers

Working with property owners

Hydro One works with property owners to ensure your feedback is reflected in the project planning.

Following the open houses, our Real Estate team will work with directly impacted property owners and secondary land use license holders to discuss next steps.

As the project planning progresses, we will be requesting property access to complete engineering and environmental field studies on properties with environmental areas of interest identified.



Thank you

Your input is important to us. Please share your feedback with our team and complete a comment form before you go.

To provide comments or to be added to the project contact list, please call or email:



1-877-345-6799



Community.Relations@HydroOne.com

For the most up-to-date project information and updates, visit our project website:



HydroOne.com/BowmanvilleEastGTA

