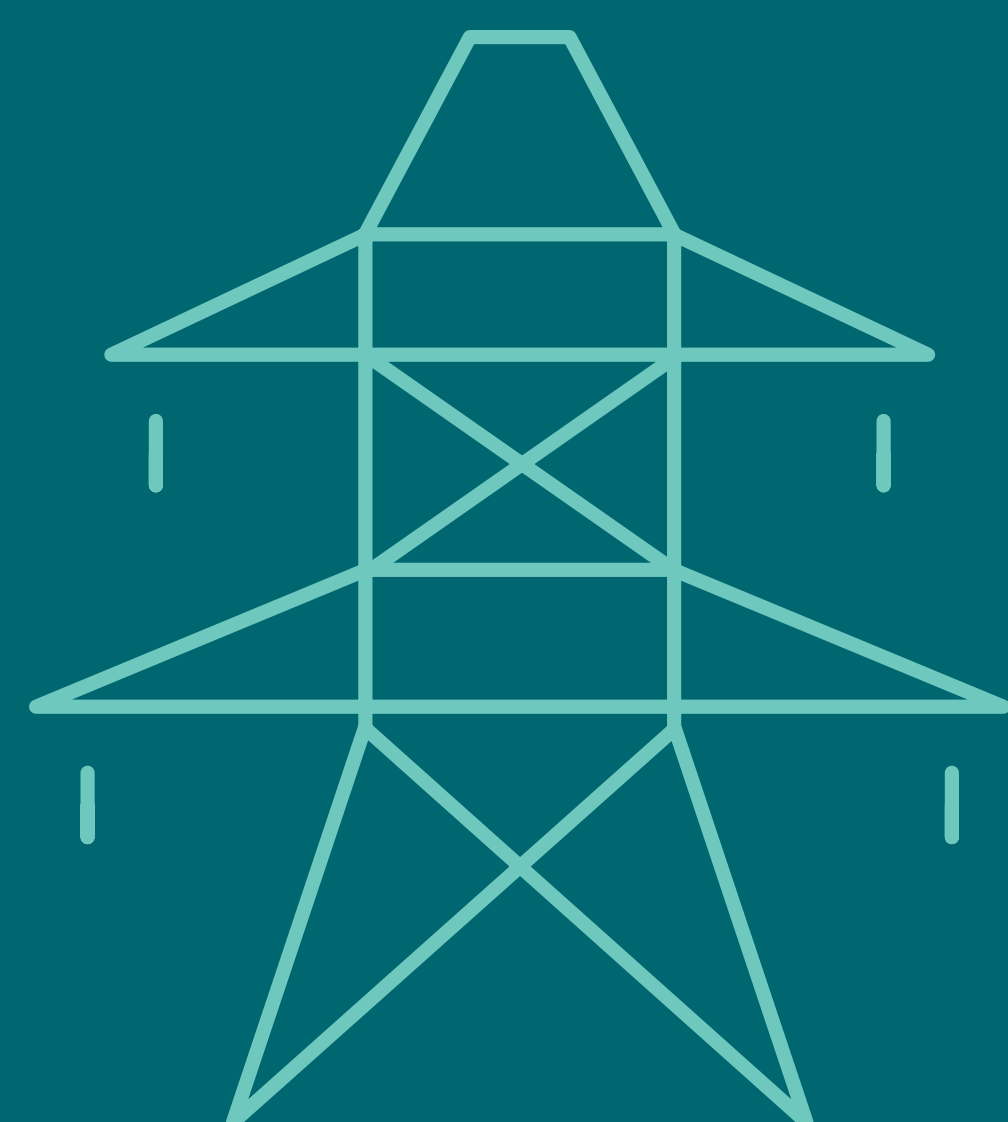


Welcome

to our Community Information Centre

Conductor Replacement

Merivale Transmission Station and
Hawthorne Transmission Station

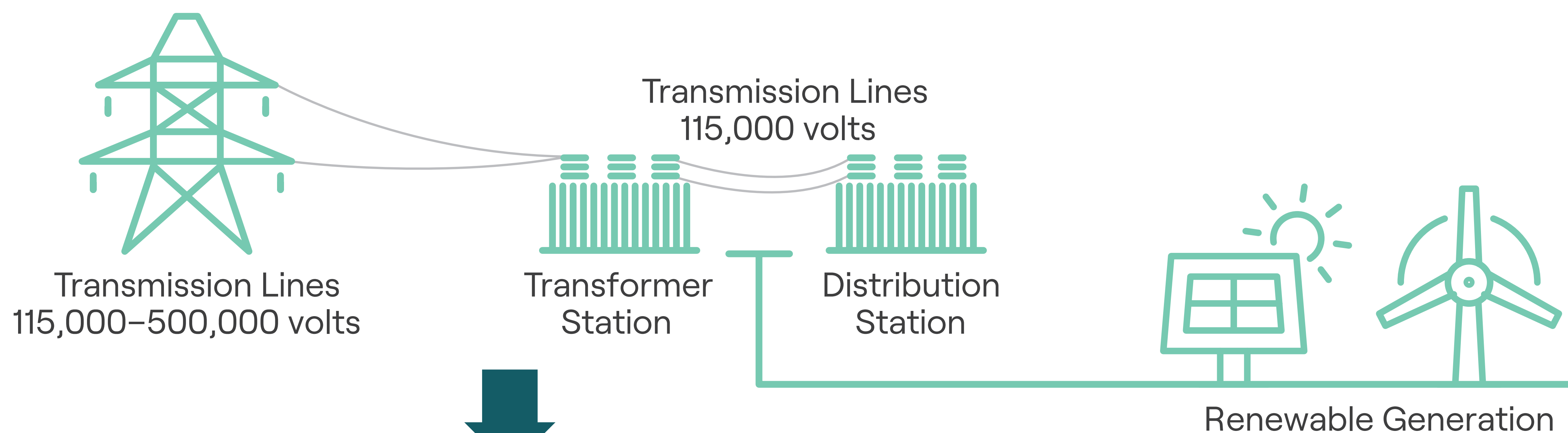


How electricity is delivered to your community

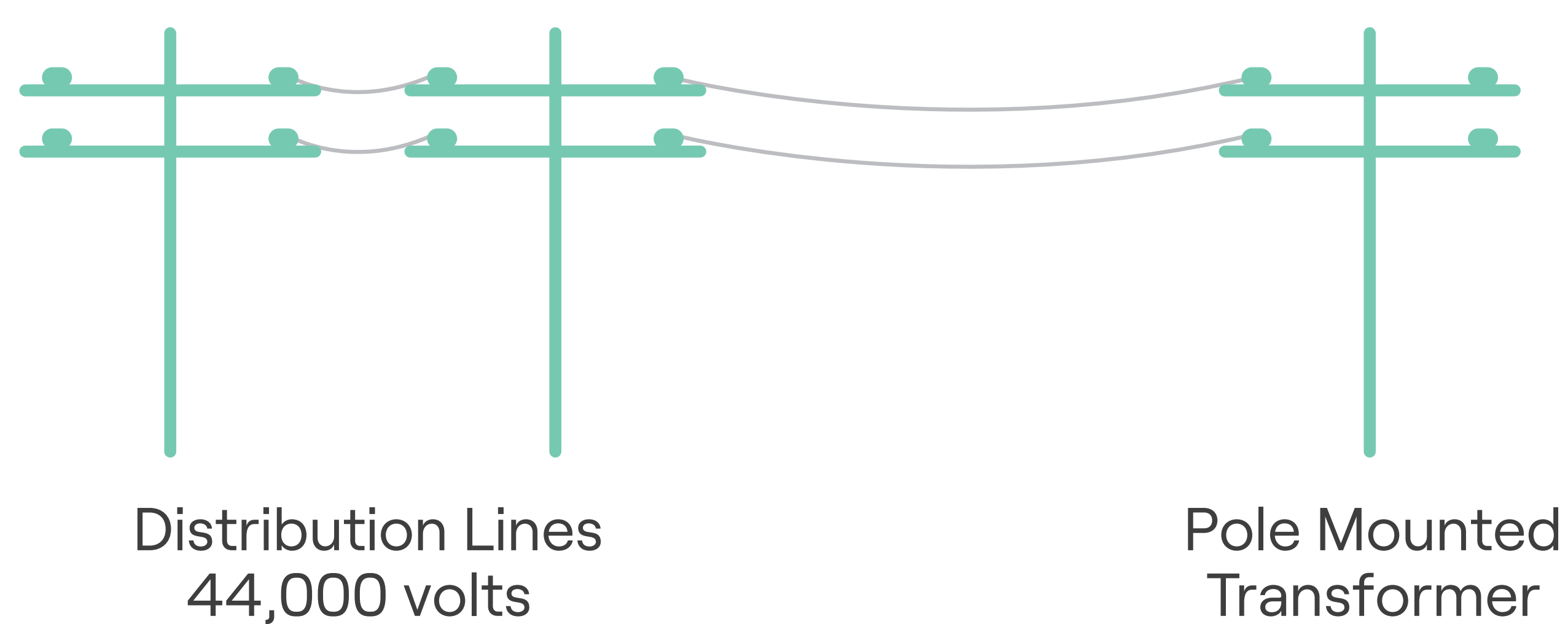
Ontario Power Generation and Private Generation Companies



Hydro One or Licensed Transmitter



Hydro Ottawa



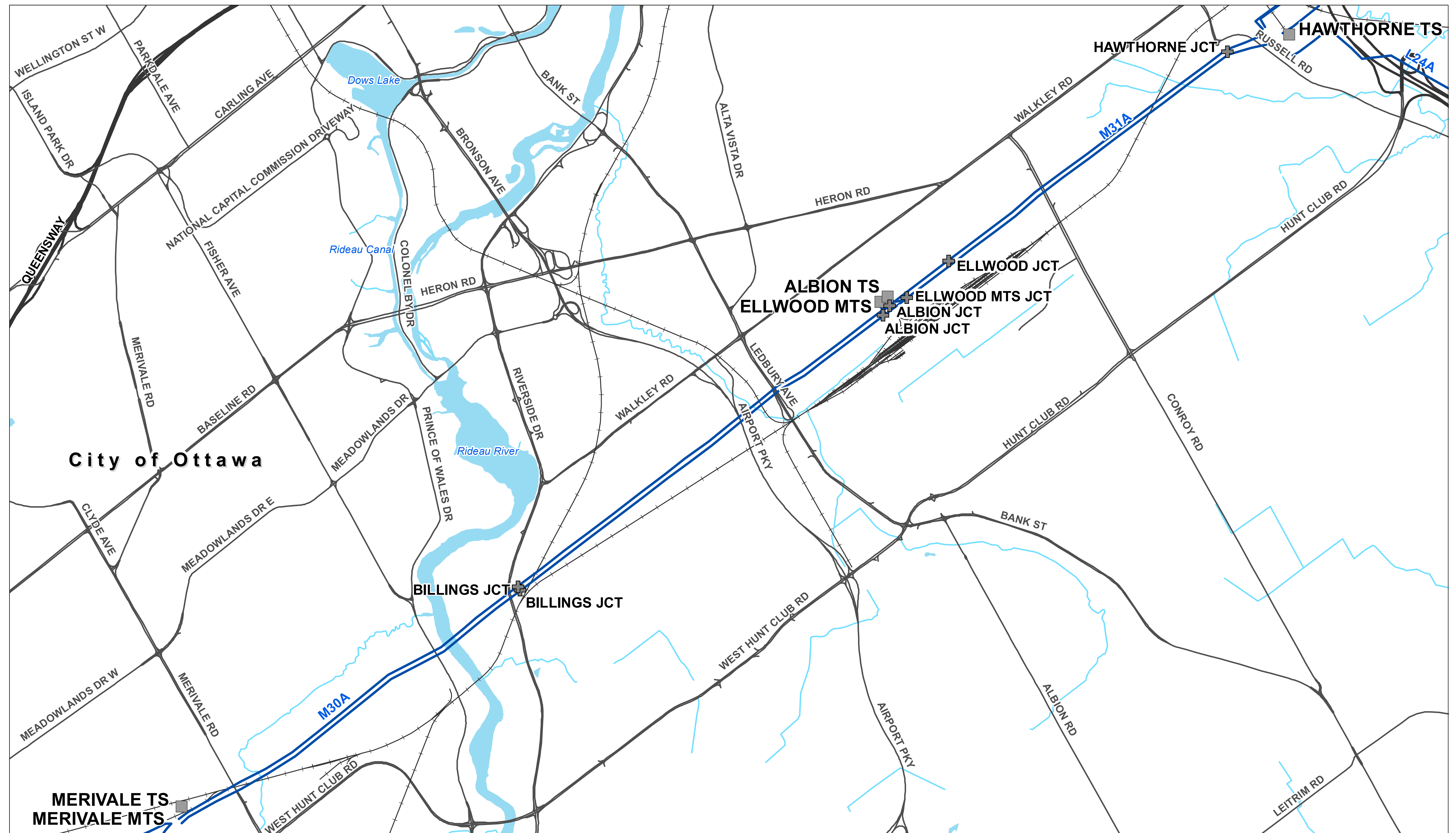
Project details

- Hydro One is required to upgrade and refurbish 12 km of our existing 230 kV line located between our Hawthorne TS and Merivale TS
- Work will take place on both the north and south tower lines within the corridor. These tower lines also hold 115 kV and 500 kV circuits which will not be modified as a part of this project
- The upgrades will increase the ampacity of the lines to meet the growing electricity needs for Western Ottawa. Ampacity refers to the amount of power flowing through the lines.
- These circuits are a critical supply to the western half of the City of Ottawa and reinforce the high voltage electrical system between Eastern Ontario and the Greater Toronto Area

This project involves

- Replacing two existing single wire 230 kilovolt (kV) circuits (M30A/M31A) with two 230 kV twin wire bundled circuits
- Replacing and installing new insulators and modifying parts on the transmission structures to accommodate upgraded wires
- Installing 12 km of new optical ground wire (OPGW) on the south tower line in order to improve communication capabilities

Project map



hydro one
 Produced By: Inergi LP, GIS Services
 Date: Jul 22, 2019
 Map19-128_M30A_M31A_HawthorneTS_MerivaleTS
 (C) Copyright Hydro One Networks Inc. All rights reserved. No part of this drawing may be redistributed or reproduced in any form by any photographic, electronic, mechanical or any other means, or used in any information storage or retrieval system. Neither Hydro One Networks Inc. nor any of its affiliates assumes liability for any errors or omissions.
 Produced by Hydro One under Licence with the Ontario Ministry of Natural Resources
 © Queen's Printer for Ontario, 2009.
 NOT TO BE REPRODUCED OR REDISTRIBUTED CONFIDENTIAL TO HYDRO ONE NETWORKS INC.

- Transformer Station
- Junction
- 230 kV Transmission Line
- Railway
- Road
- Highway
- Watercourse
- Water

M30A/M31A
Hawthorne TS to Merivale TS

1:30,000

0 500 1,000 m

Twin bundle wires

Bundling allows for two wires to be attached together with hardware

Following completion of the project there will be little noticeable change and these circuits will continue operating at the same voltage



Example of twin bundled conductor on a transmission line between Hawthorne TS and the Quebec border

Schedule

- **2019 - 2020**
Completion of a Class Environmental Assessment
- **Spring 2021**
Ontario Energy Board Leave to Construct Approval
- **Fall 2021**
Preparation activities along corridor between Albion Road and Hawthorne Transmission Station
- **January 2022 - November 2022**
Construction along Hydro One corridor.
Stringing and tower work on south tower line.
Installation of new OPGW telecom infrastructure.
- **January 2023 - December 2023**
Construction along Hydro One corridor.
Stringing and tower work on north tower line.
Completion of stringing activities.
- **December 2023**
Anticipated completion of construction*

**some removal and corridor restoration will continue into 2024*

Construction activities to prepare corridor

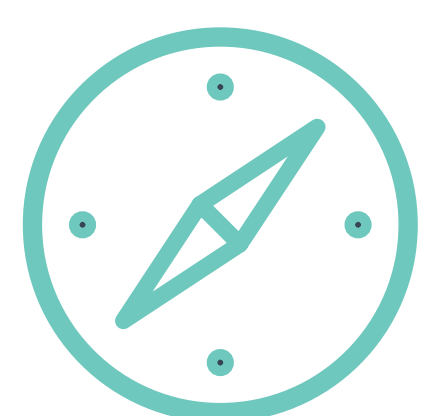
- Installation of gravel access roads within the corridor to minimize impacts to surrounding roadways
- Set-up of gravel pads at select locations within the corridor for wire stringing equipment
- Selective vegetation removal/trimming for crews to access the towers
- Installation of a temporary by-pass at the Albion Transmission Station

What to expect during construction



Temporary construction yard

- Hydro One will utilize an empty yard beside Albion TS off of Heatherington Road
- This temporary yard will be used for crew headquarters and material storage
- There will be no changes to the perimeter fencing or vegetation at this site
- Residents may notice an increase of traffic to and from this site during the project



There will be times during spring and fall where work will take place outside of normal working hours.

This is required due to planned outages on the high voltage infrastructure and our ability to maximize efficiency during these times.



Select vegetation removals

- Select vegetation removals are needed to create access to towers where the corridor has grown in.
- Crews will work to minimize vegetation removals to only around tower bases, construction equipment such as stringing pads and roadways



Residents accessing the corridor on unlicensed trails may notice areas closed off during construction to ensure public safety

What to expect during construction: Albion TS Bypass

- A temporary bypass allows live wires to be transferred to temporary structures, moving them out of the way for crews to safely work on the structures and conductor that is a part of this project
- A bypass is used to ensure continuous supply of power to Hydro Ottawa



Community considerations and mitigation

We understand that construction can be disruptive, and we will make best efforts to minimize impacts by:

- Working closely with license holders for recreational facilities along the corridor and reduce impacts to these facilities to the most extent possible
- Installing safety equipment under the wires to minimize road or walkway closures
- Installing signage along the corridor
- Minimizing impacts with selective vegetation removals

Secondary land use areas

- Secondary Land Use Licenses allow the public and businesses to safely utilize Hydro One corridor lands without impacting the electrical system
- The corridor between Hawthorne TS and Merivale TS has multiple licensed community spaces and private business areas. Hydro One has notified all license holders of the upcoming work along the corridor.
- While we strive to limit our project impacts during construction, certain areas along the corridor will be temporarily restricted to ensure public safety while work is completed on the towers and overhead wires

Thank you for attending our Community Information Centre

Please fill out a comment form before you leave,
or send us your comments afterward

Join our project contact list to receive important
updates



1.877.345.6799



Community.Relations@HydroOne.com



HydroOne.com/HawthornetoMerivale

Website

HydroOne.com

Customer Communications Centre

1.888.664.9376

Monday - Friday 7:30 a.m. - 8 p.m. ET

Power Outages & Emergencies

1.800.434.1235

24 hours a day, 7 days a week

Hydro One

PO Box 5700, Markham, ON L3R 1C8

Follow us

 @HydroOneOfficial

 @HydroOneOfficial

 @HydroOne

Hydro One Community Meeting



Register here