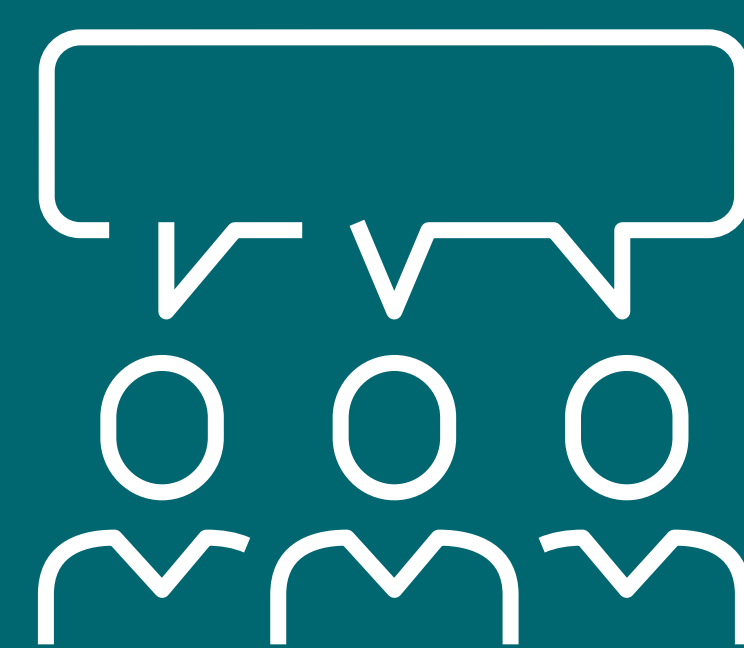
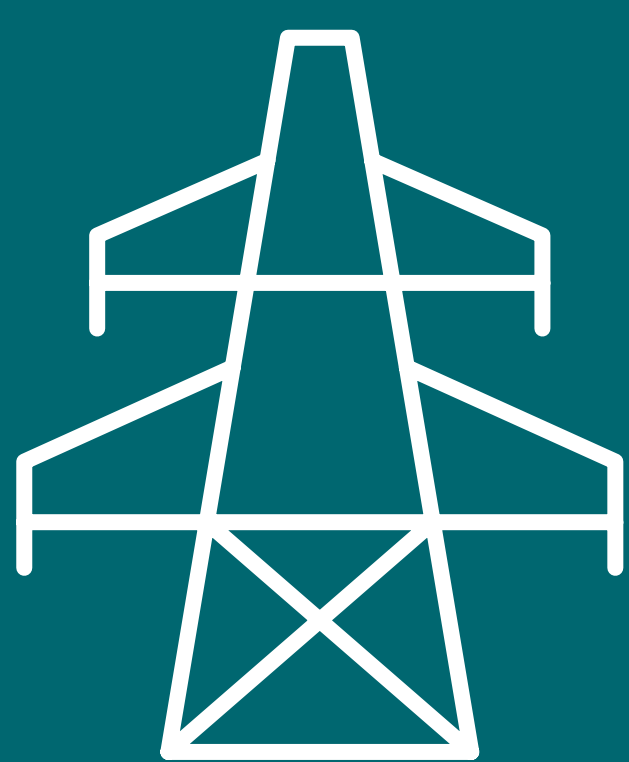


Welcome

Sudbury Barrie Transmission
Line project

Community open house 1



We are here today to:

- Provide an overview of Ontario's electricity system and increasing electricity needs
- Introduce the Sudbury Barrie Transmission Line project
- Discuss the Class Environmental Assessment (EA) process
- Share details about the route selection process
- Share the ways you can stay involved and engaged with this project
- Share anticipated project timelines
- Answer questions and gather feedback



Key organizations

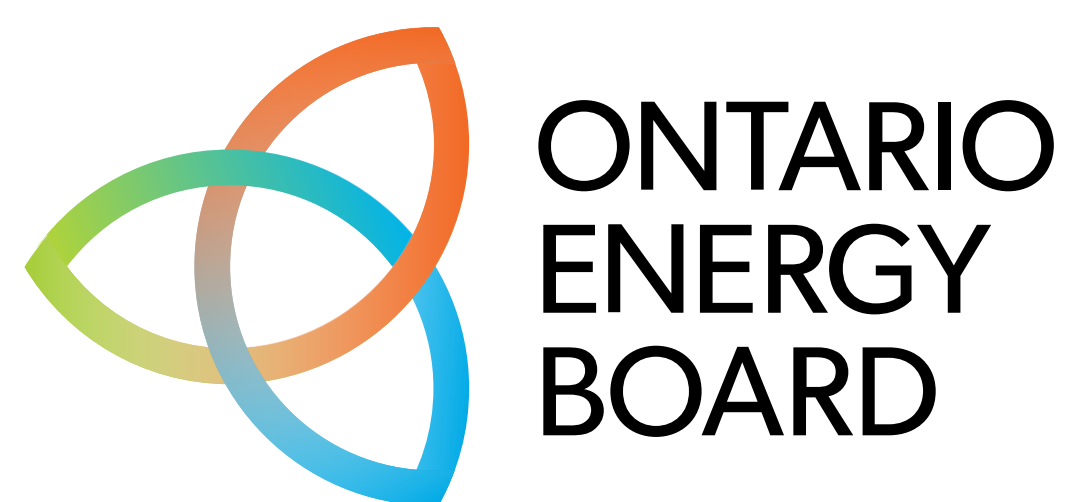
Building infrastructure to meet the energy needs of tomorrow involves a number of partners, including:



Builds, owns, operates and maintains electricity transmission and distribution facilities across Ontario.



Oversees planning to ensure electricity needs are met both now and in the future.



Regulates the electricity market in Ontario, including electricity rates.



Ministry of Energy
and Mines

Oversees the regulatory framework for the electricity system, including the Ontario Energy Board and the IESO.



Ministry of the Environment,
Conservation and Parks

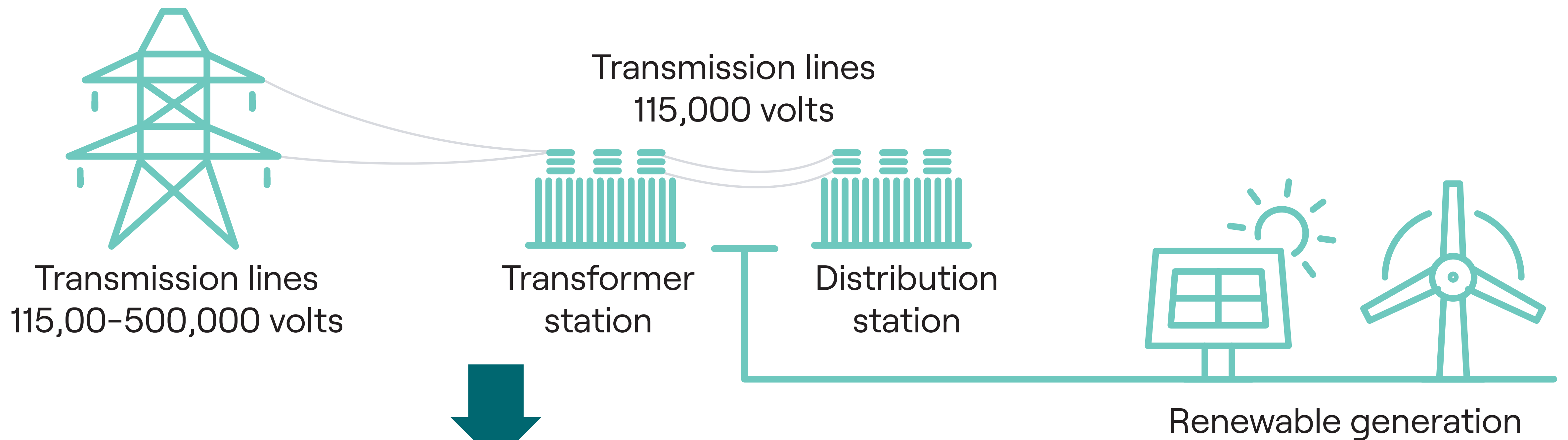
Legislative authority for environmental assessments in Ontario.

How the electricity system works

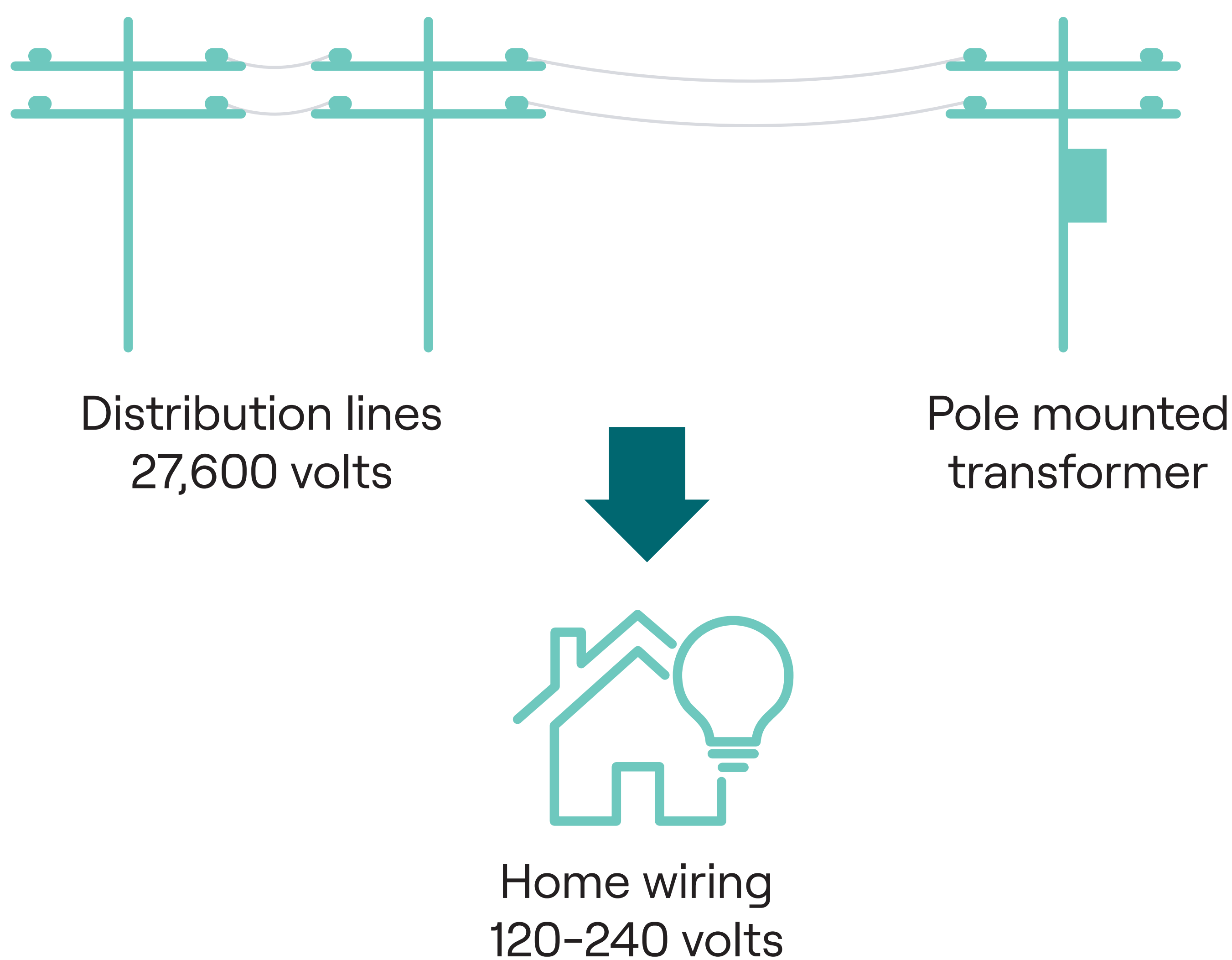
Ontario Power Generation and private generation companies



Hydro One or licensed transmitter



Hydro One or local distribution company



The Sudbury Barrie Transmission Line project

Ontario's long-term demand for electricity is increasing, as is the investment required to strengthen the electricity system. New customers need more power, and they need it faster than ever.

To meet demand, Hydro One is investing in the proposed Sudbury Barrie Transmission Line project in collaboration with First Nation partners.

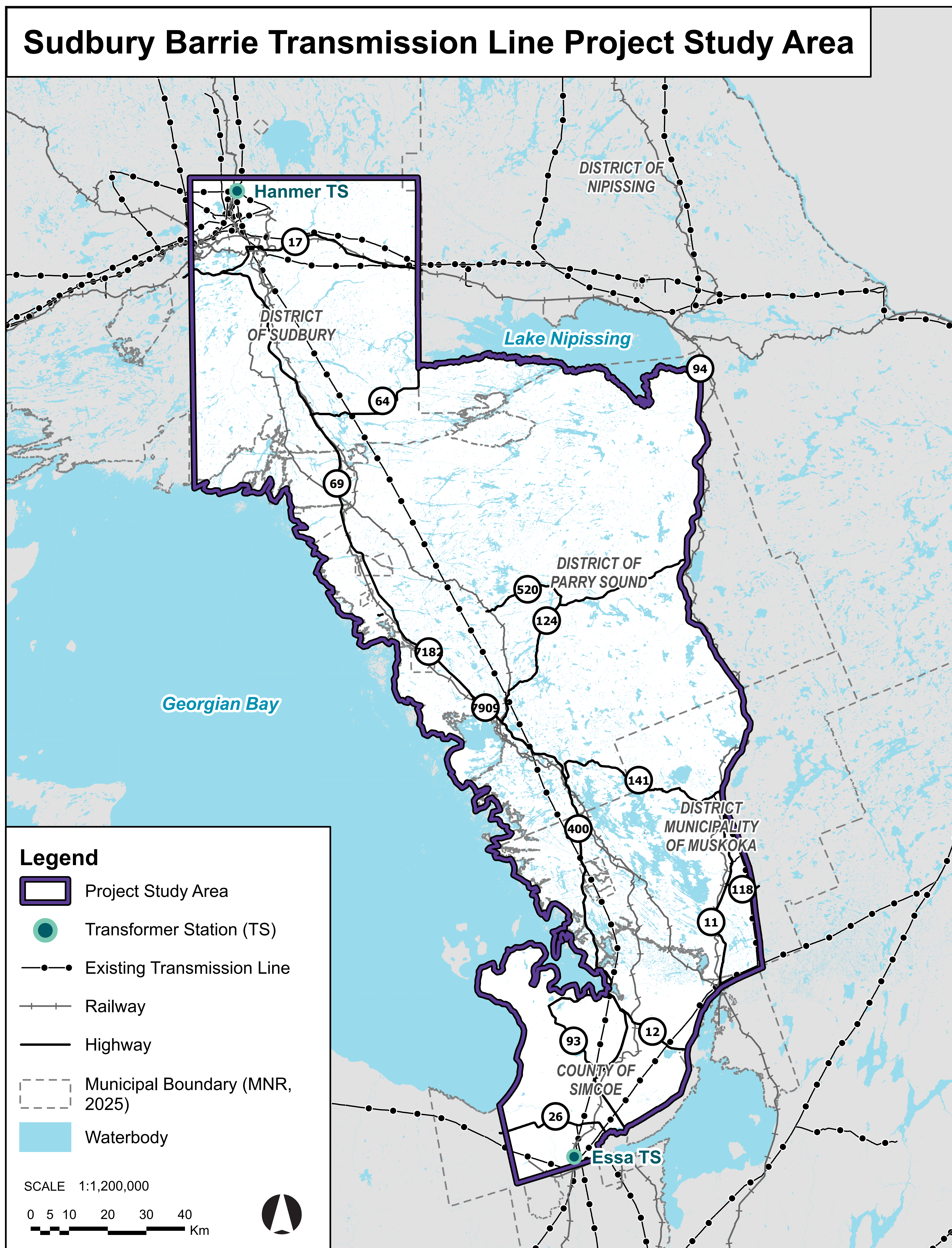
The proposed priority project is a new single-circuit, 500-kilovolt (kV) transmission line that will span approximately 300 kilometres from the Hanmer Transformer Station (TS) in Sudbury to Essa TS near Barrie, including station facility expansions. The line is expected to be in service in 2032.

This project includes the direction from the Ontario government to complete development work for a second new single-circuit, 500-kV transmission line. A recommended in-service date for the second line will be determined by the Independent Electricity System Operator.

Once built, the line will connect to new sources of generation, unlock opportunities to add electricity capacity to the system and strengthen the backbone of the grid.

Project study area

The map below shows the area we're studying to determine route alternatives which will be shared later this year. See the table maps for a more detailed view.



We want to hear from you

We are in the early stages of this project, and would like to hear from you as we develop the route alternatives.

What should we know about the study area?

For example

- Are there any areas that are important to your community?
- Do you own or operate a business in the area, or rely on seasonal visitation?
- Are there seasonal patterns or local uses of the area we should consider?

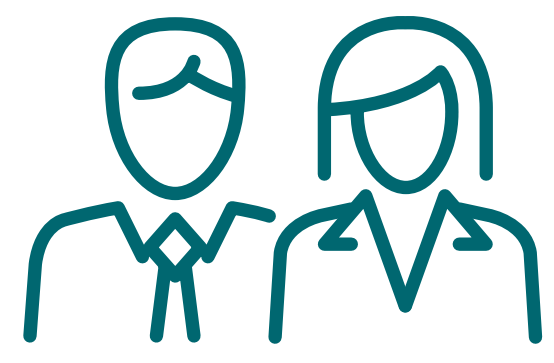
We encourage you to:

- Talk to our project team.
- Use the sticky notes or markers on the table maps to share local insights and your comments.
- Fill out a form to provide feedback.

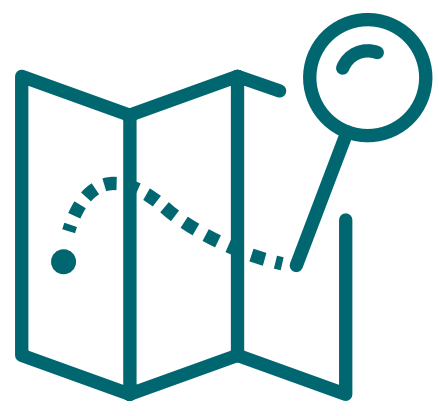


Community feedback is critical to the success of this project, and we look forward to engaging with you at every stage.

Upcoming environmental field studies



Over the coming months, environmental consultants will be carrying out field studies to help us better understand local environmental conditions.



Their work will include activities such as surveying vegetation, wildlife, water features and other natural areas.



These studies are an important part of the environmental assessment process, and help us identify potential impacts and develop appropriate mitigation measures.



What is a Class EA?



This project will be subject to the Class EA for Transmission Facilities (2024), a planning process that includes opportunities for public and community input.

It applies to transmission infrastructure projects that are carried out routinely and have predictable environmental effects that can be readily managed and considered before construction.

The Class EA process ensures that we:

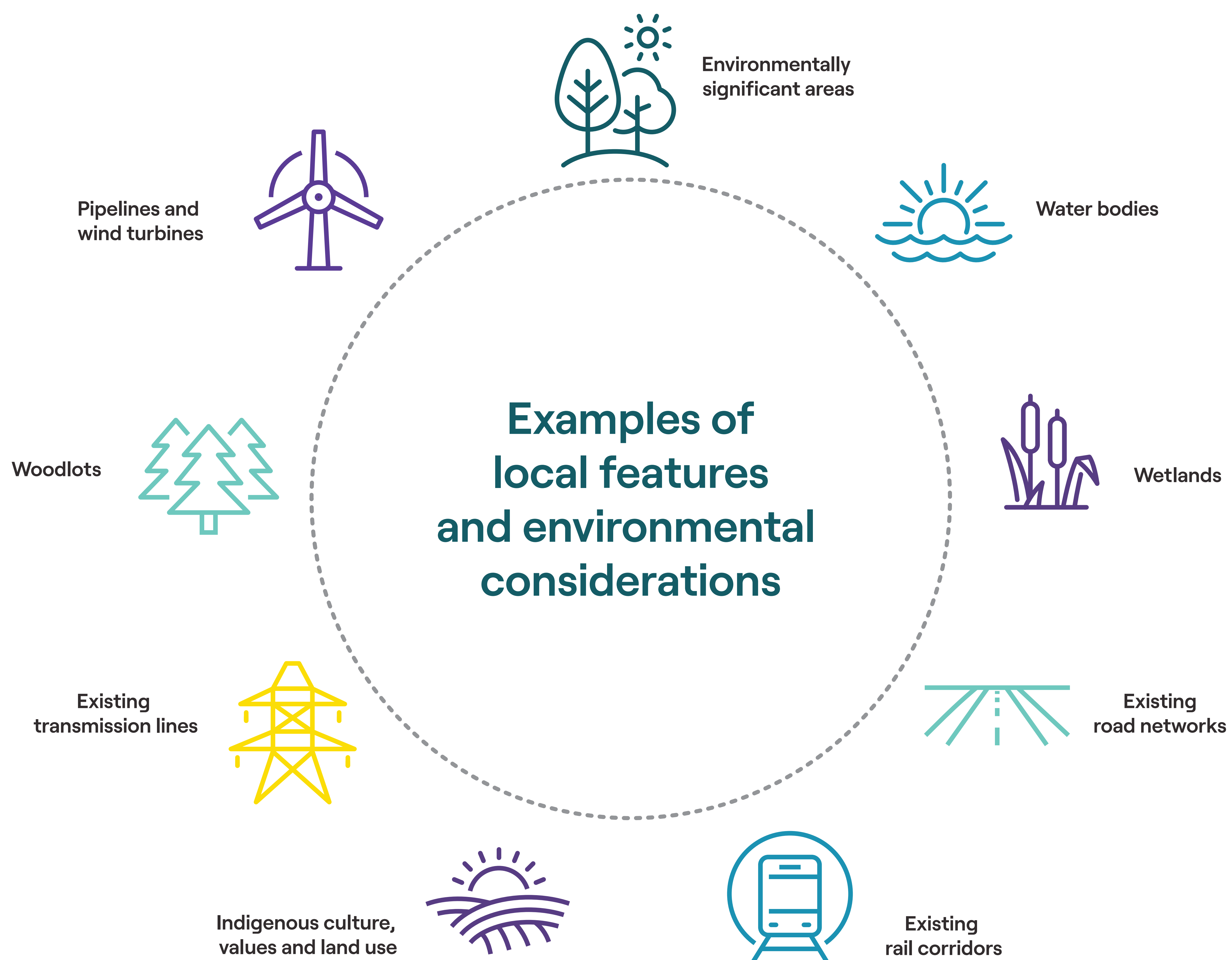
- Engage with government agencies, municipalities and elected officials, residents and other interest groups
- Work with Indigenous communities to identify areas of interest pertaining to culture, values and land use
- Characterize the environment within the study area
- Identify potential effects and proposed mitigation measures
- Evaluate route alternatives and select the preferred route
- Prepare and submit the final Environmental Study Report (ESR) to the Ministry of the Environment, Conservation and Parks

Later this year, we will issue a Notice of Commencement to formally start the Class EA. At that time, we will invite community members to a second round of community open houses to share a project update, including route alternatives.

Identifying route alternatives

To identify viable route alternatives, the project team will assess technical, socio-economic, and natural environment considerations within the study area. Each route alternative will be studied and evaluated to ultimately select a preferred route.

When the Class EA begins later this year, we will share the route alternatives.



Selecting the preferred route

Over the course of the Class EA, we will study and learn more about each route alternative by collecting data from a variety of sources, and conducting environmental surveys and technical assessments. We will also host a wide range of engagement opportunities to gather input and feedback.

Through this process, we will assess the advantages and disadvantages of each route using criteria grouped into the four categories below, with contextual examples provided.



Natural environment

- Vegetation
- Waterbodies, wetlands and aquatic habitat
- Wildlife and wildlife habitat
- Species at risk
- Parks and protected areas



Socio-economic environment

- Residential properties
- Commercial, industrial, institutional and other business facilities
- Recreational and tourism-related features
- Agricultural resources and operations
- Archaeological and cultural heritage assessments



Indigenous culture, values and land use

- Indigenous interests (cultural sites, traditional areas, historic lands and resources)



Technical and cost

- Land rights and considerations
- Construction complexity
- Line length and angles
- Co-location of existing infrastructure

Community engagement

Early, meaningful and open engagement helps shape our project planning. We will continue to listen to communities at every stage.

A wide range of engagement opportunities will be held to gather input and feedback, which is critical as we plan this project.

We will continue to keep communities, residents and members of the public involved in our planning and project activities.

Sign up for our project contact list by providing your contact information on our sign-in sheet or at HydroOne.com/SBTL

Contact us anytime: **1-877-345-6799**

Community.Relations@HydroOne.com | HydroOne.com/SBTL



Working with Indigenous communities



At Hydro One, we work to build and maintain respectful, positive relationships with Indigenous communities across Ontario.

Our approach goes beyond engagement. We foster lasting partnerships that are rooted in respect, transparency and collaboration. And we work to incorporate Indigenous voices, knowledge and values to help shape how the project is planned and executed.

Each new line Hydro One builds is also an opportunity for partnership with First Nations and to buy goods and services from Indigenous suppliers.

Through Hydro One's industry-leading 50-50 First Nation Equity Partnership Model, First Nation partners will have the opportunity to invest in a 50 per cent equity ownership stake in the transmission line component of this project.

Learn more at HydroOne.com/IndigenousRelations

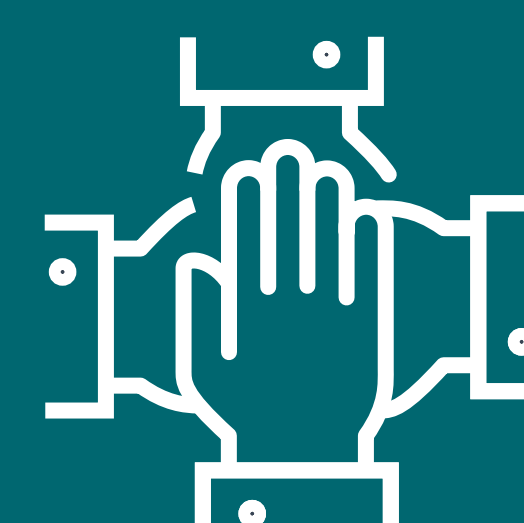
Our approach



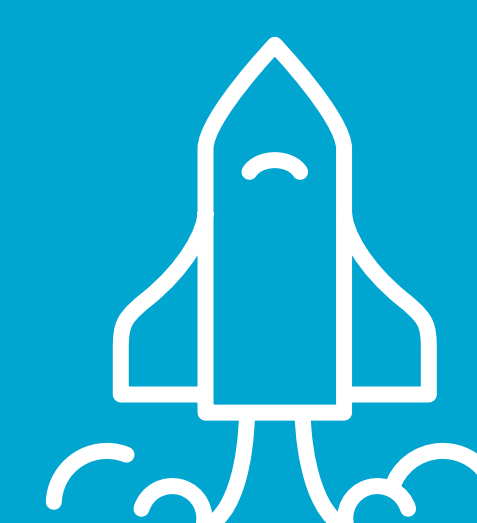
Excelling at
Engagement



Working with
Integrity



Holding
Ourselves
Accountable



Breaking
Barriers

Estimated project development timeline

Ongoing engagement

- **2026**
Project announcement
- **2026**
Community open house 1
- **2026**
Consultation and data collection
- **2026**
Notice of Commencement of Class EA, release of route alternatives
- **2026**
Community open house 2, to present route alternatives
- **2026-2027**
Engagement and data collection to support the Class EA
- **2027**
Notice of preferred route
- **2027**
Community open house 3, to present the preferred route
- **2027**
Notice of Completion, release of draft Environmental Study Report (ESR) for public review and comment
- **2028**
Submit final ESR and complete the Class EA process
- **2028-2029**
Complete detailed design and other permits and approvals, including Leave to Construct (Section 92) approval from the Ontario Energy Board
- **2029**
Start of construction
- **2032**
Line energized



Thank you for joining us

Please share your feedback with our team and complete a comment form before you go.

To provide comments or to be added to the project contact list, please call or email:



1.877.345.6799



Community.Relations@HydroOne.com

For the most up-to-date project information and project updates, visit our project website:
HydroOne.com/SBTL

