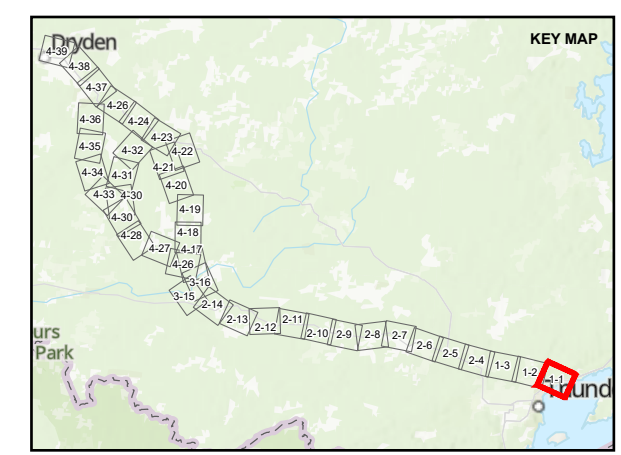


- LEGEND**
- SWH FIELD TARGETS**
- WATERFOWL STOPOVER (TERRESTRIAL)
 - COLONIALY NESTING BIRD (GROUND)
 - OPEN COUNTRY BIRD BREEDING
- ROUTE TYPES**
- - - ALTERNATIVE ROUTE 1
 - - - ALTERNATIVE ROUTE 1A
 - - - ALTERNATIVE ROUTE 1B - 1
 - - - ALTERNATIVE ROUTE 1B - 2
- INFRASTRUCTURE**
- LOCAL ROAD
 - SECONDARY HIGHWAY
 - RAILWAY
 - - - TRAIL
 - WATERCOURSE
 - ▭ LOCAL STUDY AREA



DRAFT

REFERENCE(S)
 BASE DATA COURTESY OF LAND INFORMATION ONTARIO MNR. IMAGERY COPYRIGHT © ESRI AND ITS LICENSORS. USED UNDER LICENSE, ALL RIGHTS RESERVED.
 PROJECTION: CSRS UTM ZONE 15 DATUM: NAD 83

CLIENT
 HYDRO ONE NETWORKS INC.

PROJECT
 WAASIGAN TRANSMISSION LINE

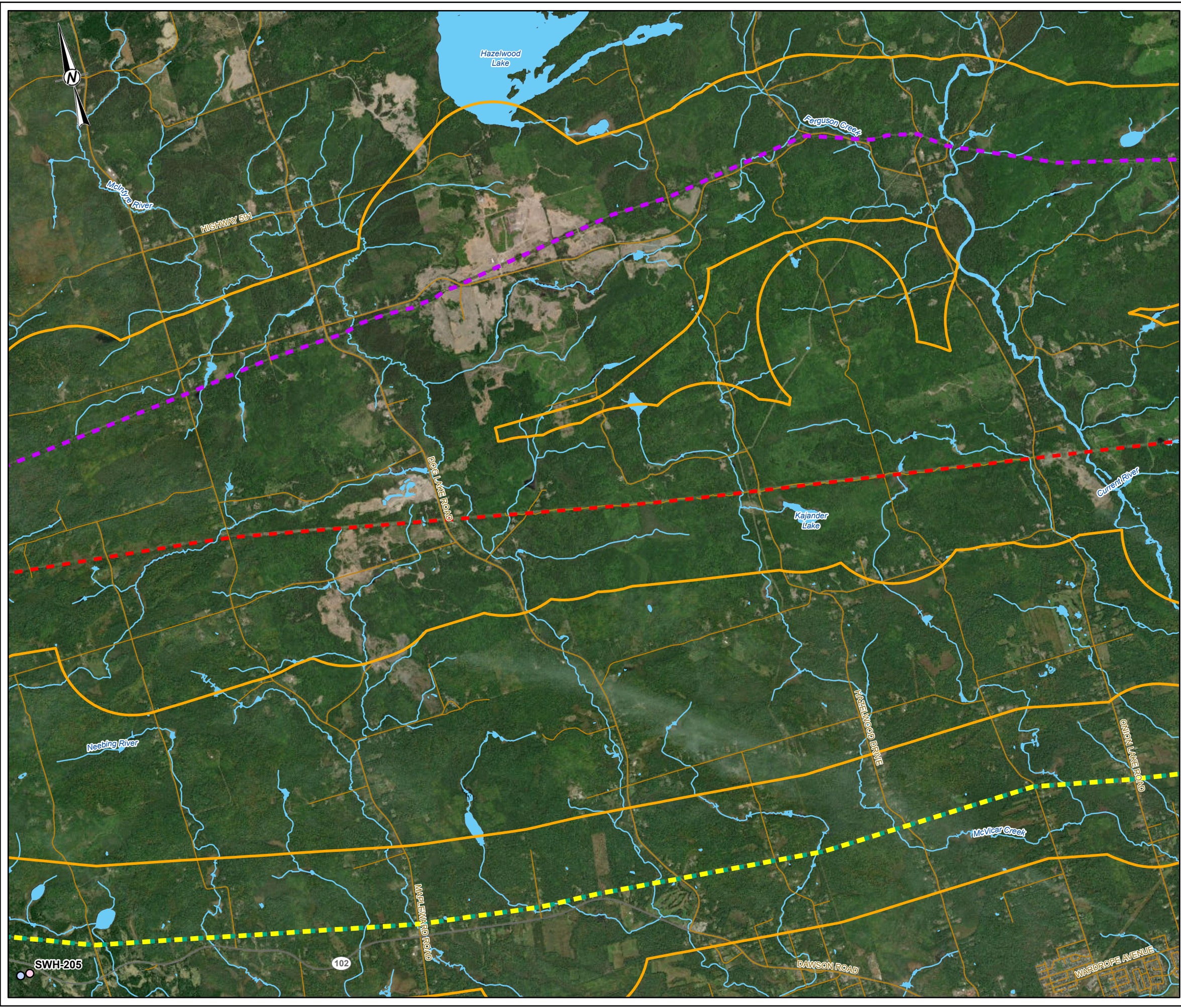
TITLE
 SIGNIFICANT WILDLIFE HABITAT (SWH) SURVEY LOCATIONS – THUNDER BAY

CONSULTANT	YYYY-MM-DD	2022-07-14
wsp GOLDER	DESIGNED	EG
	PREPARED	DB
	REVIEWED	
	APPROVED	

PROJECT NO.	CONTROL	REV.	FIGURE
20137728	0015	A	1-1

PATH: S:\Client\HydroOne\Waasigan\09_PROJ\20137728\04_Proj\Eng\Environment\SWH_MapDocs\20137728_0015_C-0001.mxd PRINTED ON: AT 9:05:01 PM

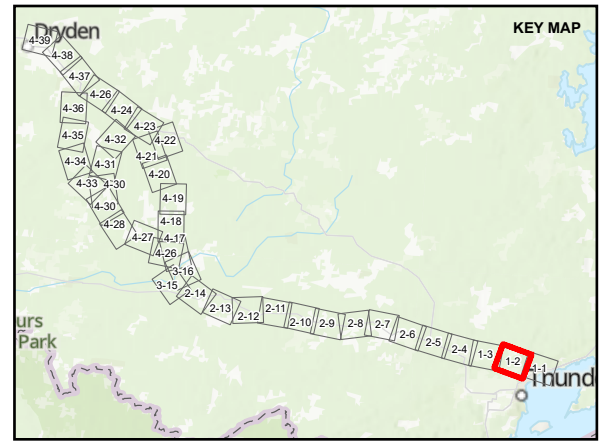
IF THIS MEASUREMENT DOES NOT MATCH WHAT IS SHOWN, THE SHEET SIZE HAS BEEN MODIFIED FROM: ANSI B



LEGEND

SWH FIELD TARGETS

- COLONIALY NESTING BIRD (TREE AND SHRUB)
- ELM
- ALTERNATIVE ROUTE 1
- ALTERNATIVE ROUTE 1A
- ALTERNATIVE ROUTE 1B - 1
- ALTERNATIVE ROUTE 1B - 2
- LOCAL ROAD
- SECONDARY HIGHWAY
- WATERCOURSE
- LOCAL STUDY AREA



0 1 2
1:50,000 KILOMETRES

DRAFT

REFERENCE(S)
 BASE DATA COURTESY OF LAND INFORMATION ONTARIO MNR. IMAGERY COPYRIGHT © ESRI AND ITS LICENSORS. USED UNDER LICENSE, ALL RIGHTS RESERVED.
 PROJECTION: CSRS UTM ZONE 15 DATUM: NAD 83

CLIENT
 HYDRO ONE NETWORKS INC.

PROJECT
 WAASIGAN TRANSMISSION LINE

TITLE
 SIGNIFICANT WILDLIFE HABITAT (SWH) SURVEY LOCATIONS – THUNDER BAY

CONSULTANT	YYYY-MM-DD	2022-07-14
WSP GOLDER	DESIGNED	EG
	PREPARED	DB
	REVIEWED	
	APPROVED	

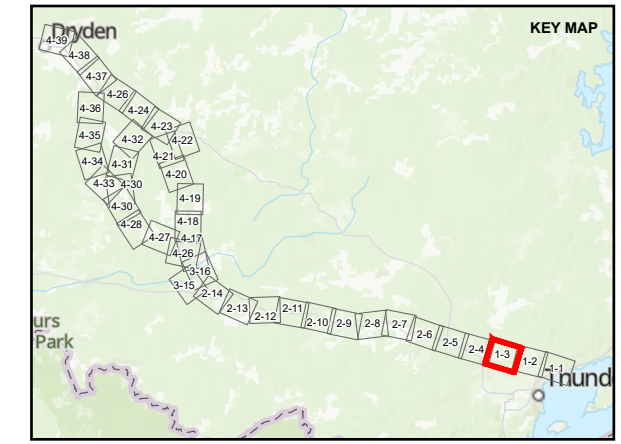
PROJECT NO.	CONTROL	REV.	FIGURE
20137728	0015	A	1-2

PATH: S:\Client\HydroOne\Waasigan\991_PRC\20137728\40_PRC\0015_Public_Engagement\SWH_MapDocs\20137728_0015-C-0001.mxd PRINTED ON: AT 5:05:06 PM

IF THIS MEASUREMENT DOES NOT MATCH WHAT IS SHOWN, THE SHEET SIZE HAS BEEN MODIFIED FROM: ANSI B



- LEGEND**
- COLONIALY NESTING BIRD (GROUND)
 - COLONIALY NESTING BIRD (TREE AND SHRUB)
 - ELM
 - ROCK BARREN
 - ALTERNATIVE ROUTE 1
 - ALTERNATIVE ROUTE 1A
 - ALTERNATIVE ROUTE 1B - 1
 - ALTERNATIVE ROUTE 1B - 2
 - ALTERNATIVE ROUTE 1C
 - LOCAL ROAD
 - SECONDARY HIGHWAY
 - RAILWAY
 - WATERCOURSE
 - ▭ LOCAL STUDY AREA



DRAFT

REFERENCE(S)
 BASE DATA COURTESY OF LAND INFORMATION ONTARIO MNR. IMAGERY COPYRIGHT © ESRI AND ITS LICENSORS. USED UNDER LICENSE, ALL RIGHTS RESERVED.
 PROJECTION: CSRS UTM ZONE 15 DATUM: NAD 83

CLIENT
 HYDRO ONE NETWORKS INC.

PROJECT
 WAASIGAN TRANSMISSION LINE

TITLE
 SIGNIFICANT WILDLIFE HABITAT (SWH) SURVEY LOCATIONS – THUNDER BAY

CONSULTANT	YYYY-MM-DD	2022-07-14
DESIGNED	EG	
PREPARED	DB	
REVIEWED		
APPROVED		

PROJECT NO.	CONTROL	REV.	FIGURE
20137728	0015	A	1-3

PATH: S:\Client\HydroOne\Waasigan\09_PROJ\20137728\00_Public_Engagement\SWH_MapDocs\20137728_0015_C-0001.mxd PRINTED ON: AT 9:05:11 PM

IF THIS MEASUREMENT DOES NOT MATCH WHAT IS SHOWN, THE SHEET SIZE HAS BEEN MODIFIED FROM: ANSI B