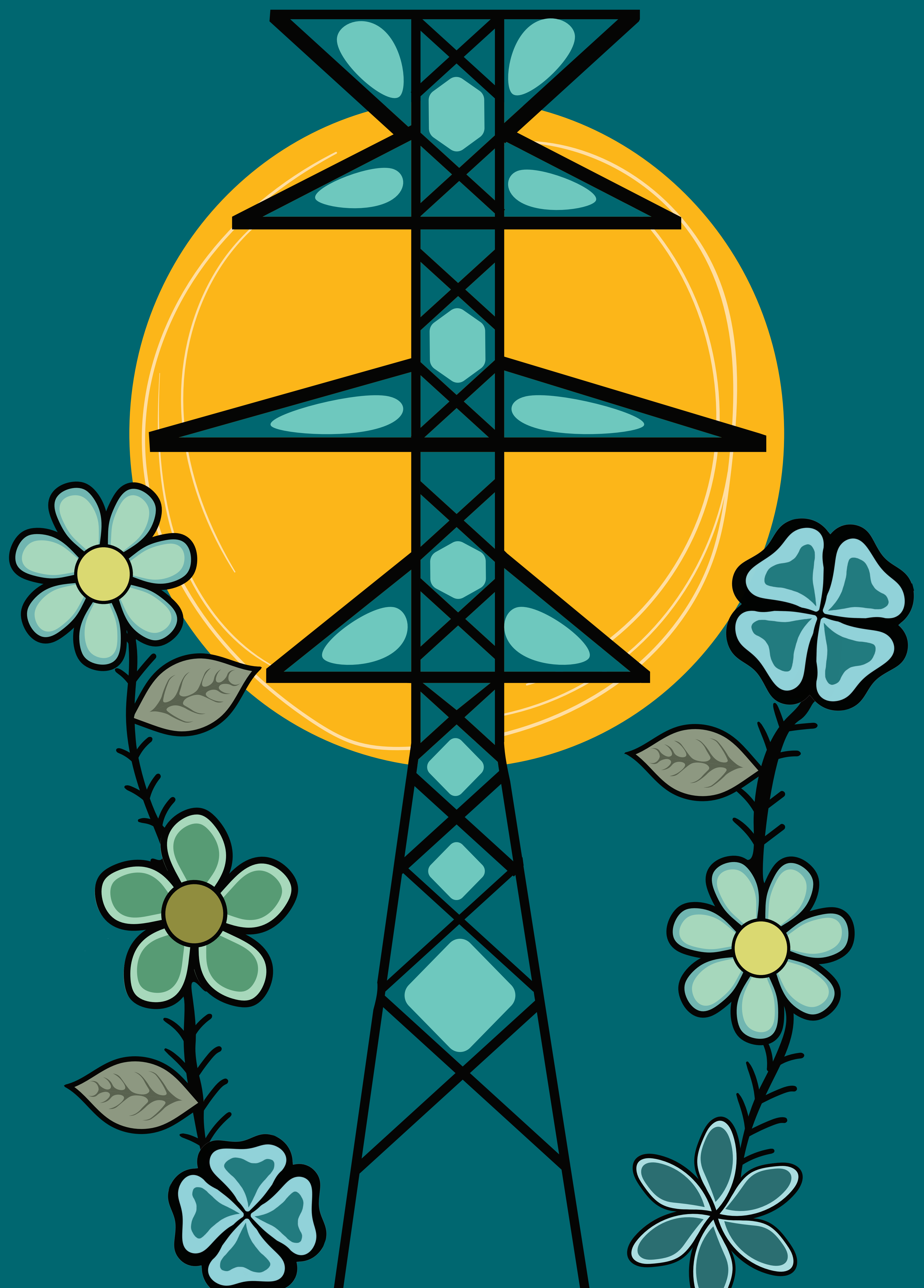


Welcome

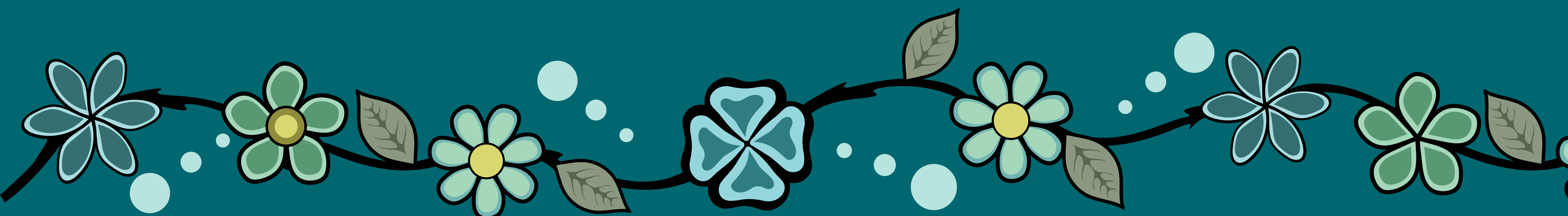
Wawa Timmins Power Line

Spring 2026



We're here to:

- Provide an overview of the electricity system
- Describe how the route options were evaluated
- Share the preferred route
- Outline next steps
- Listen to feedback and answer questions



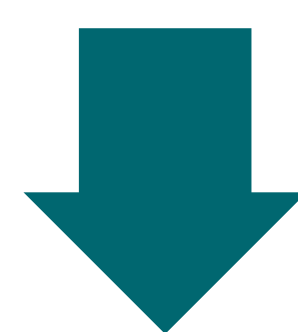
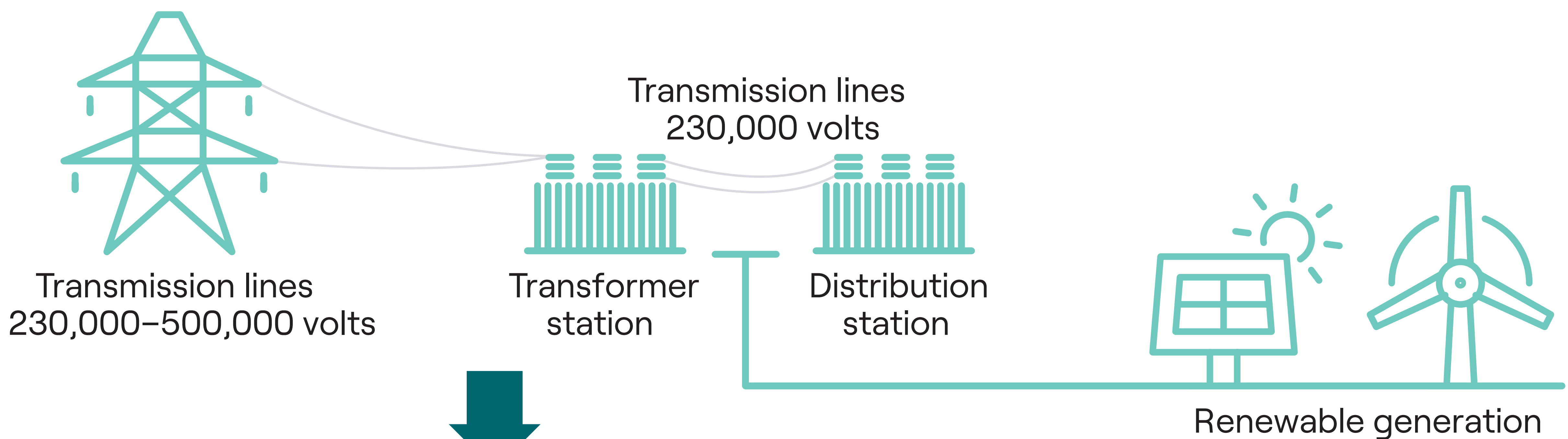
Getting power to you

Hydro One brings power to homes and businesses through the construction and operation of electrical infrastructure.

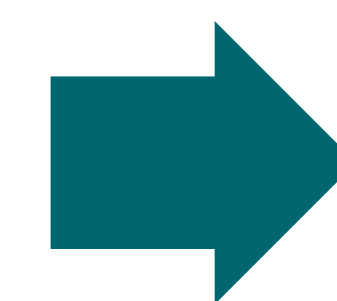
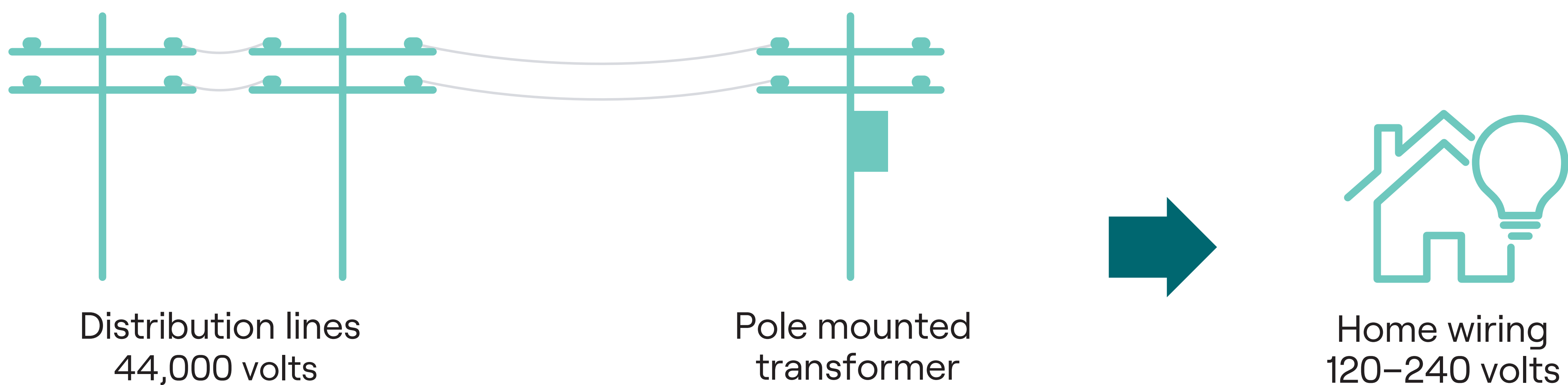
Ontario Power Generation and private generation companies



Hydro One or licensed transmitter



Hydro One or local distribution company



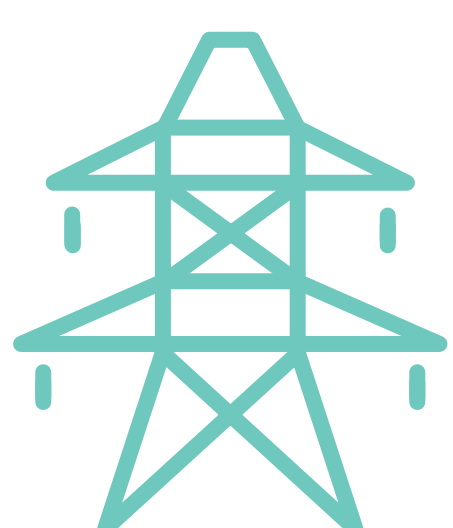
Project need

Long-term electricity demand in Ontario is increasing. To meet this need, Hydro One will build the proposed Wawa Timmins Power Line.

Once built, the Wawa Timmins Power Line will:



Support Ontario-based economic growth in the region.



Improve reliability and reinforce the backbone of the electricity grid.



Create capacity-building and partnership opportunities with Indigenous communities.




Contribute to the purchase of locally-produced goods and services.

The environmental assessment

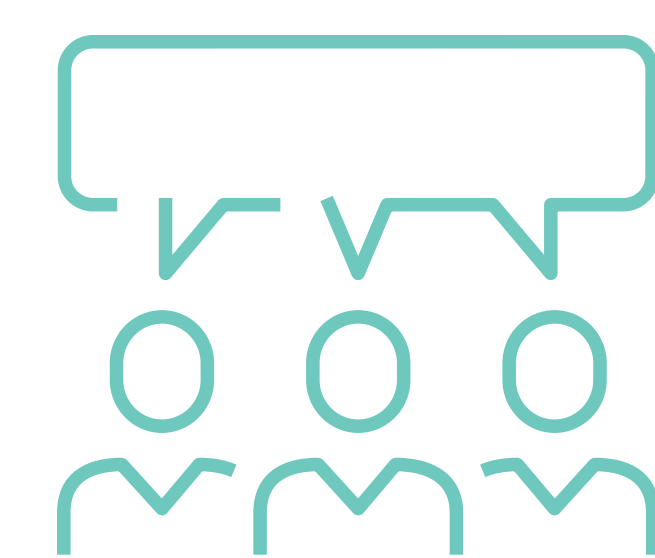
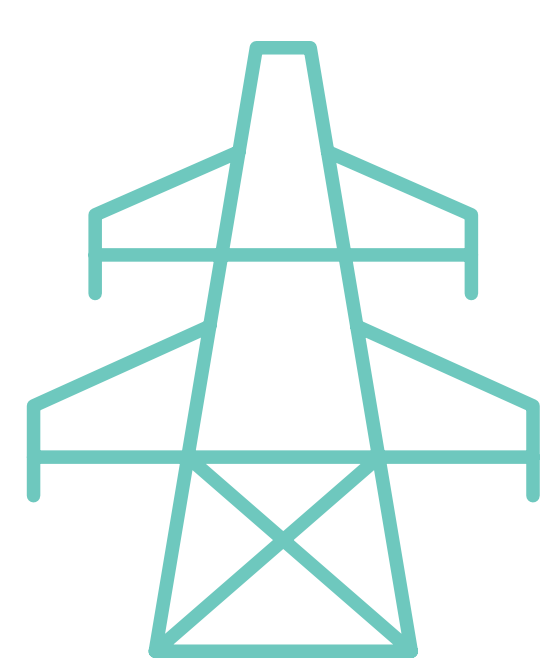


Ongoing engagement

Steps of a Class Environmental Assessment

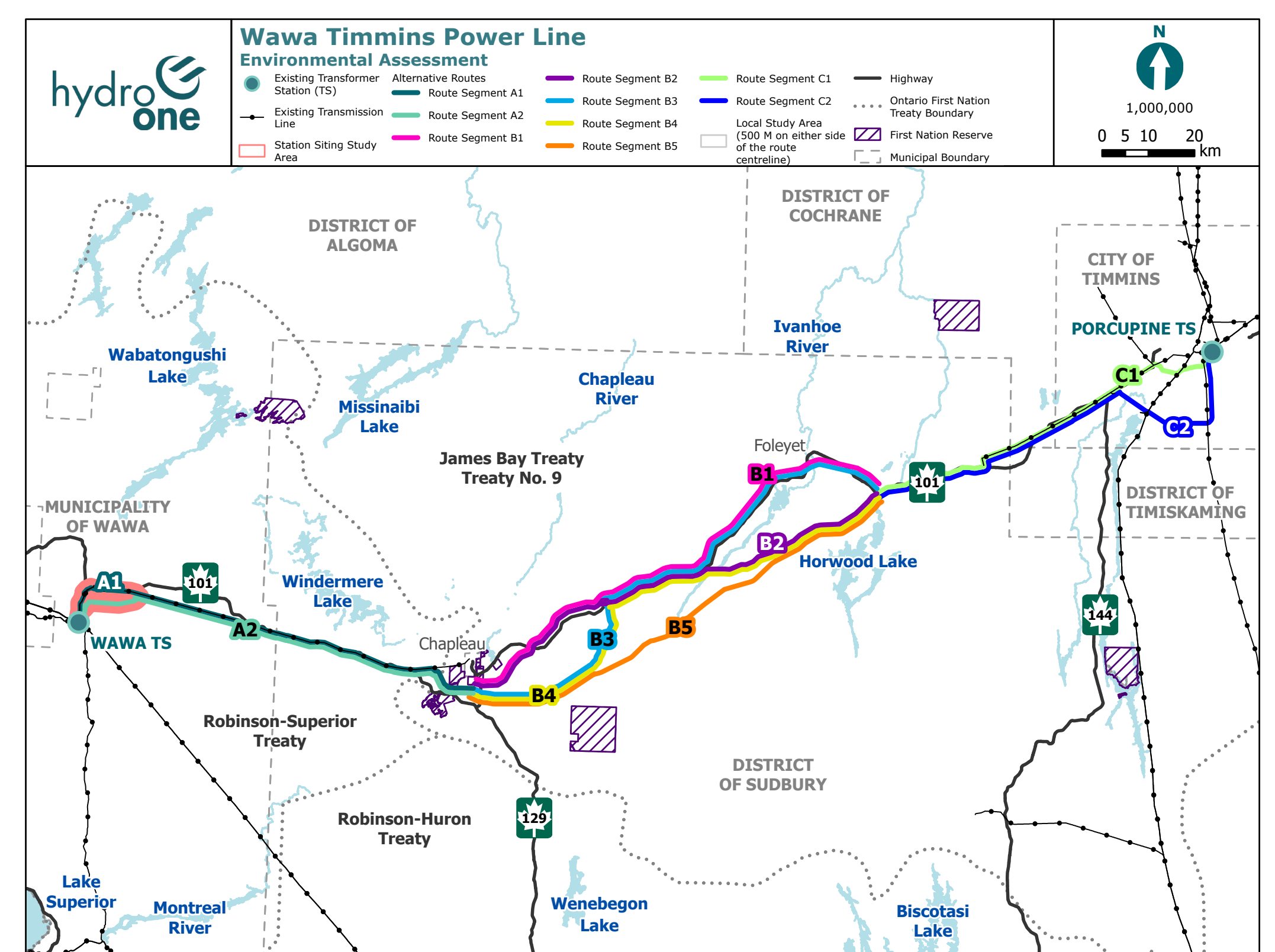
- Identify route options.
- Seek feedback from the public, Indigenous communities, municipalities, interest groups and government agencies.
- Collect environmental information.
- Assess, refine and evaluate route options.
- Select a preferred route. 
- Continue with field studies, identify potential project impacts and mitigation measures.
- Prepare a draft Environmental Study Report that will be made available for review and comment by Indigenous communities and the public.
- Submit the final Environmental Study Report to the Ministry of the Environment, Conservation and Parks.

For more information, see HydroOne.com/ClassEA

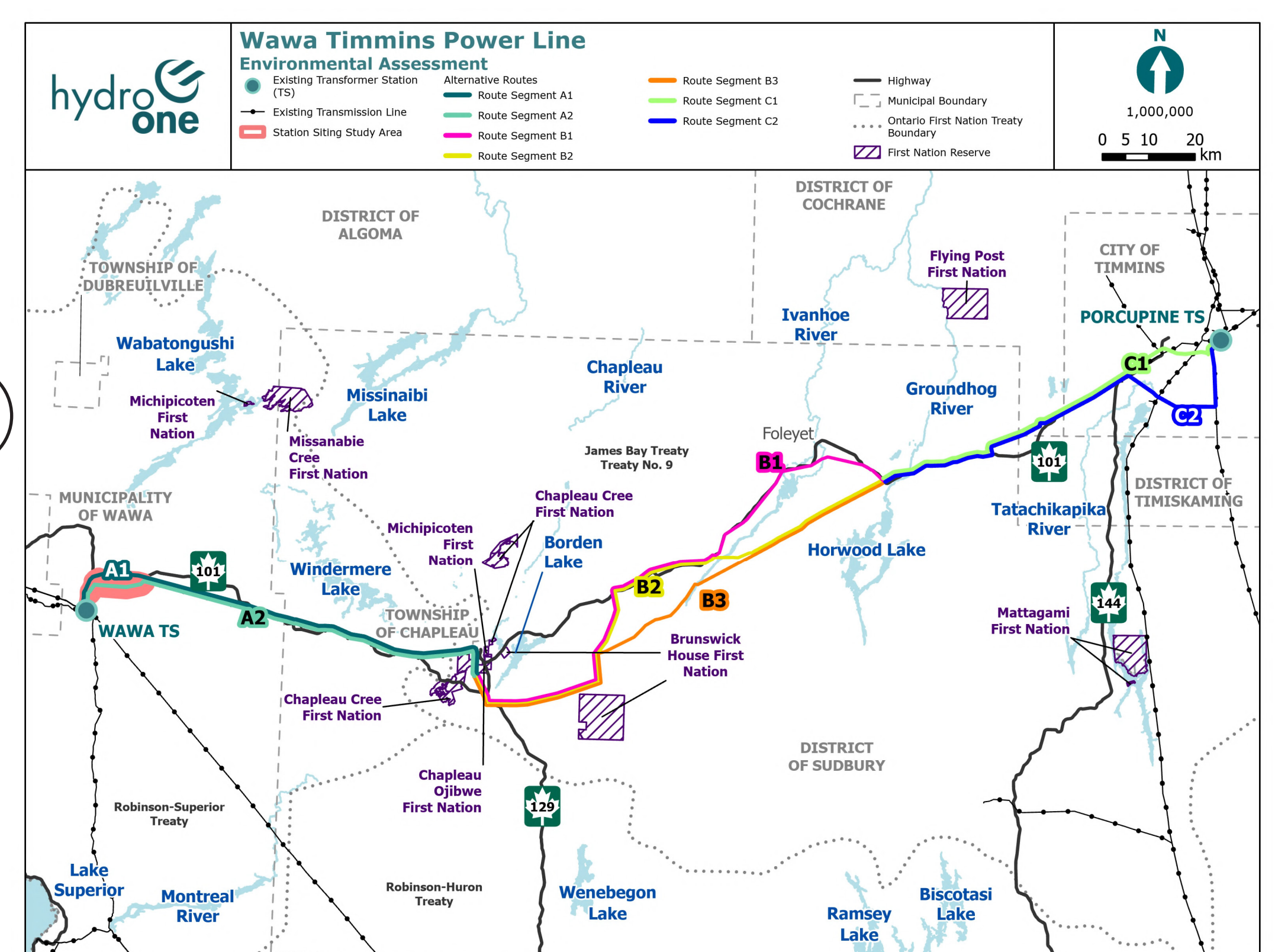


How the route was selected

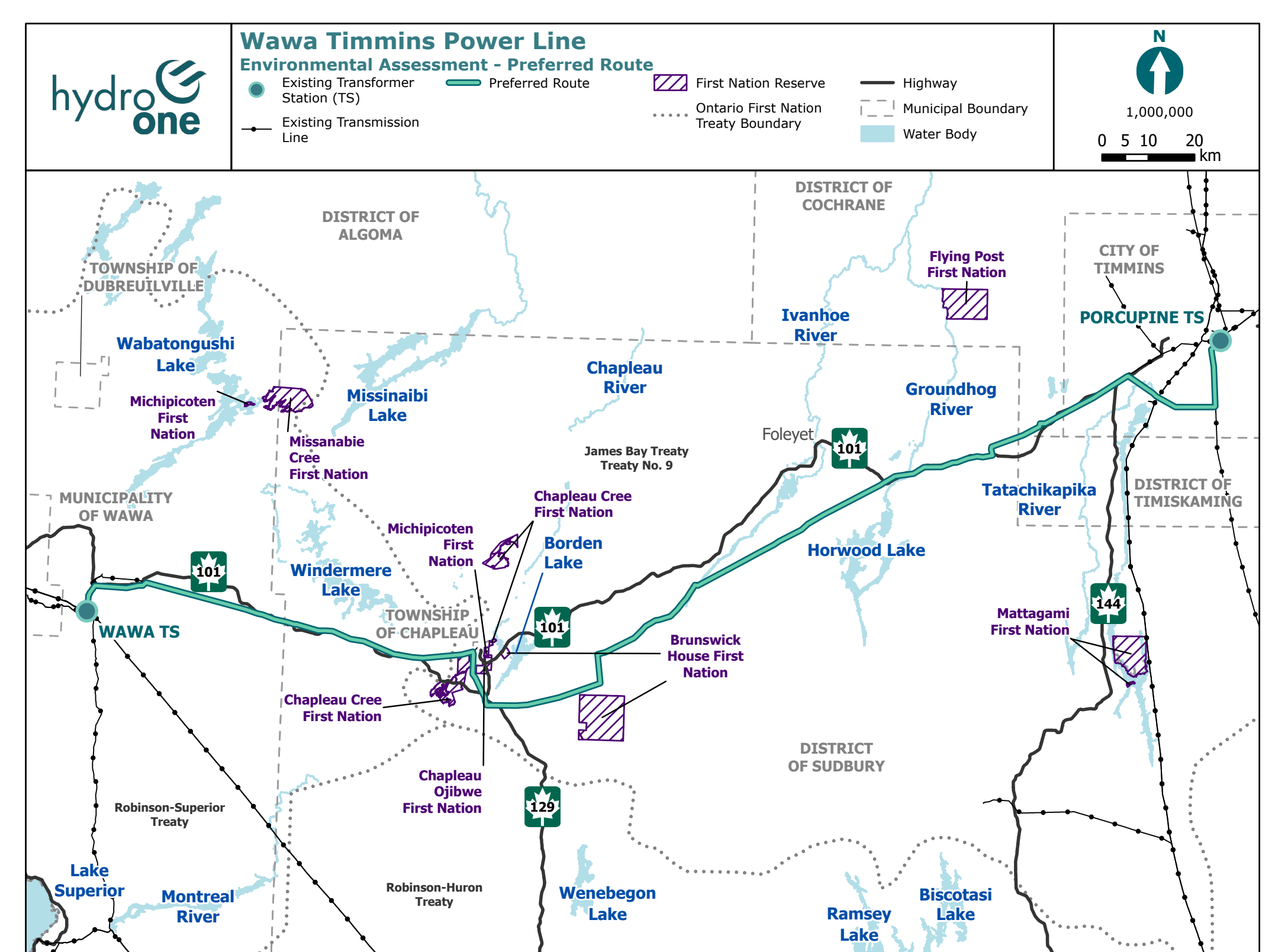
- 1. May 2025:** Initial route options were identified based on known local conditions, such as environmentally sensitive areas, mining operations, preliminary feedback from Indigenous communities and existing infrastructure.
- 2. January 2026:** Through continued engagement and technical review, the route options were refined to help select a route that reflects what we learned along the way.
- 3. May 2026:** The route options were evaluated to select the route that best balances all the criteria we must consider.



1



2

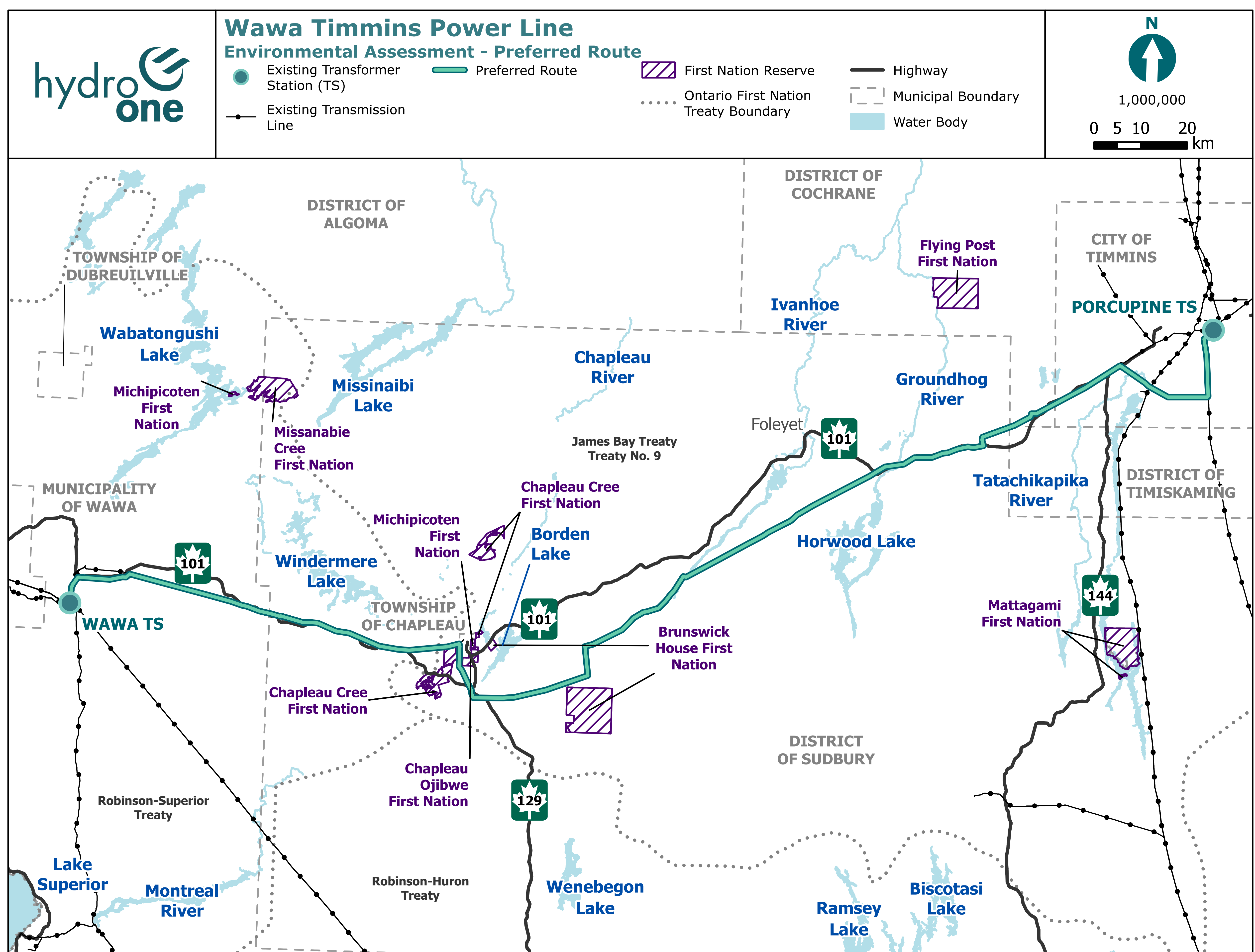


3

Wawa Timmins Power Line





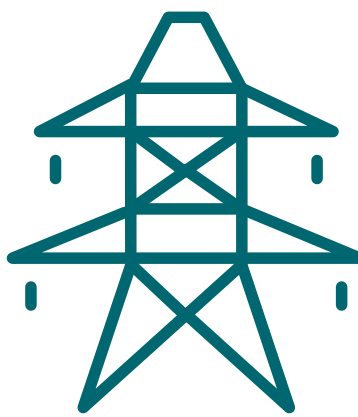
The Wawa Timmins Power Line is a proposed new transmission line in the traditional territories of the Robinson-Superior, Robinson-Huron and James Bay Treaty (Treaty No. 9) First Nations.

Through an evaluation process, the route that best balances all the elements we must consider was selected. These elements include considerations for the natural and socio-economic environments; Indigenous culture, values, and land use; and technical and cost criteria.



How the route options were evaluated

The route options being considered were assessed based on environmental field studies and feedback, to help understand how each option performed in the following categories.

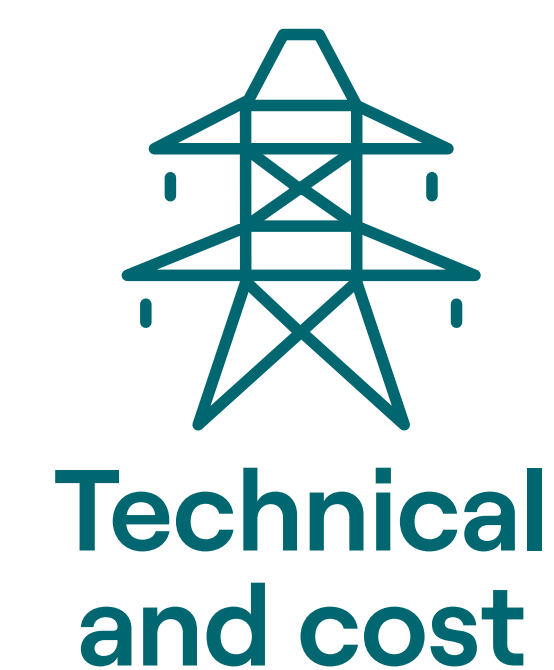
Category		Examples
 <p>Indigenous culture, values and land use</p>		<ul style="list-style-type: none"> • Traditional land use areas • Areas of known Indigenous cultural significance • Values identified from Indigenous knowledge
 <p>Natural environment</p>		<ul style="list-style-type: none"> • Wetlands • Provincial parks • Waterbodies • Species at risk • Conservation areas
 <p>Socio-economic environment</p>		<ul style="list-style-type: none"> • Commercial and industrial facilities • Mining claims • Properties and land use
 <p>Technical considerations</p>		<ul style="list-style-type: none"> • Reducing the number of angles • Crossing of physical features like rivers, lakes, buildings and/or steep terrain features • Real estate and land rights considerations • Construction complexity and ability to complete construction on time

Wawa to Chapleau area

While the options considered in this first section were similar, route A2 was selected because it has the least overall impacts.

The benefits of this route:

- Less impacted landowners
- Avoids more areas with known cultural heritage and potential archaeological importance
- Less water crossings and overlap with wetlands and species at risk habitat
- Less highway, railway and power line crossings

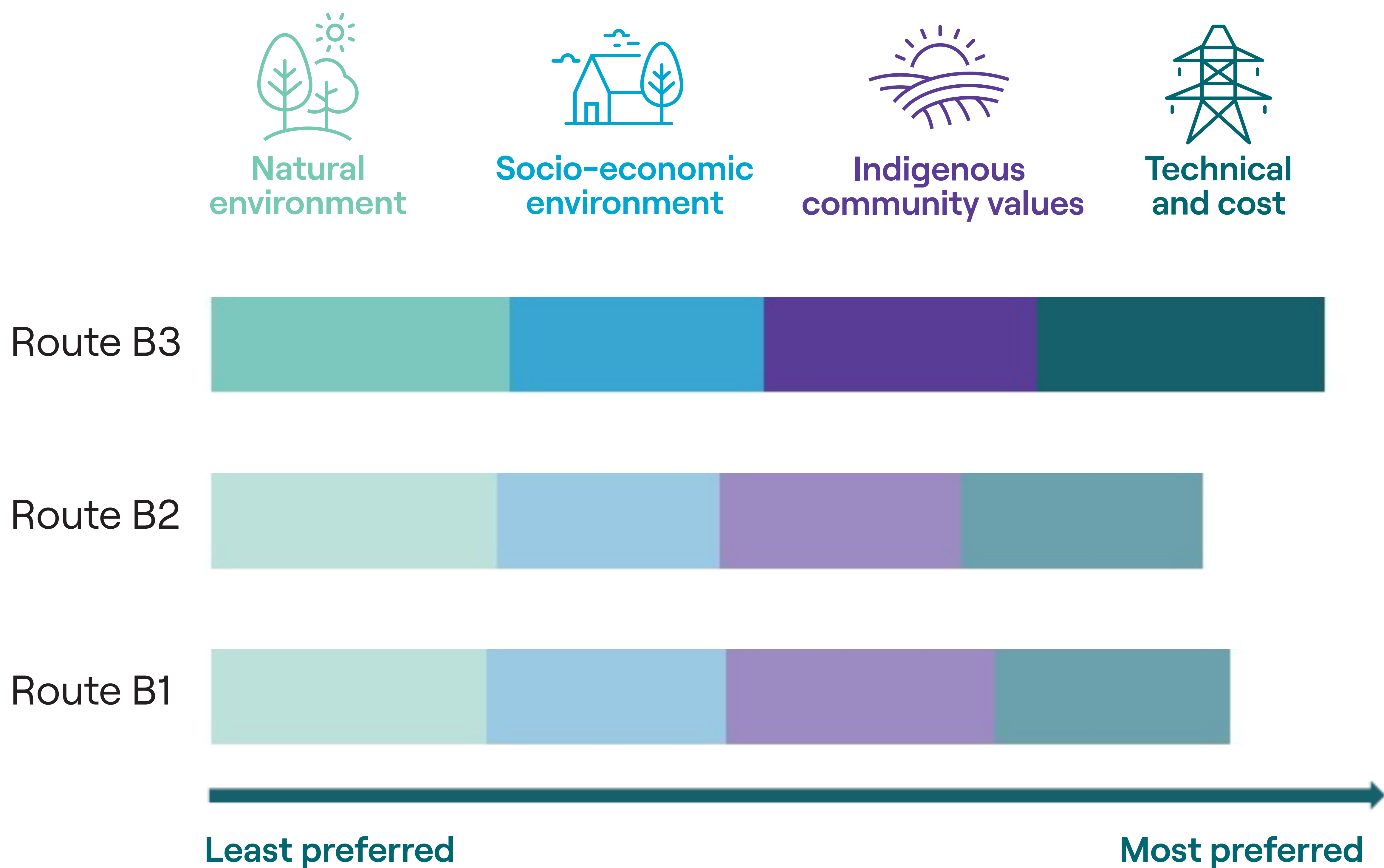


Chapleau to Horwood Lake area

Compared to other routes in this section, route B3 was selected because it has the least overall impacts.

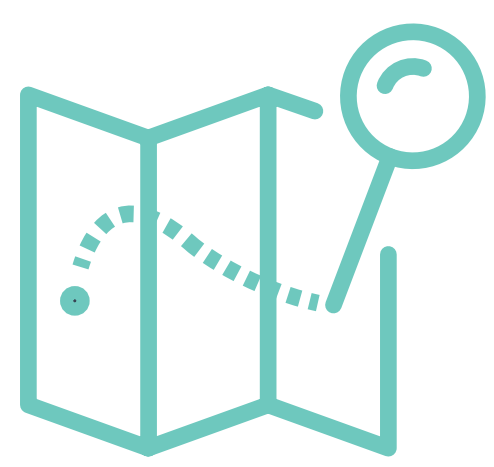
The benefits of this route:

- Less impacted landowners
- Avoids more areas of potential archaeological importance
- Less interaction with mining and forestry operations
- Less interaction and effects to species at risk, including important aquatic and moose habitats
- Less crossings of waterbodies and wetlands

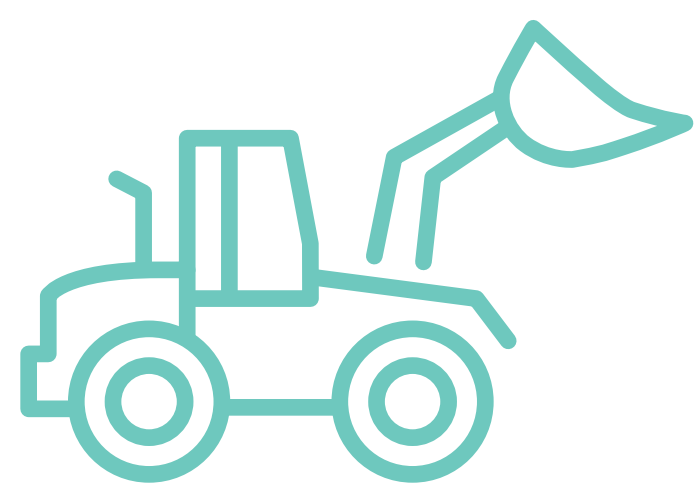


Mitigation and restoration opportunities

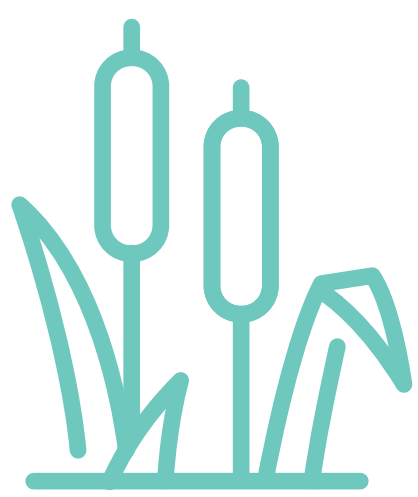
As a trusted developer and operator of transmission lines in Ontario, the following mitigation measures are being considered for constructing the line:



Use existing access as much as possible



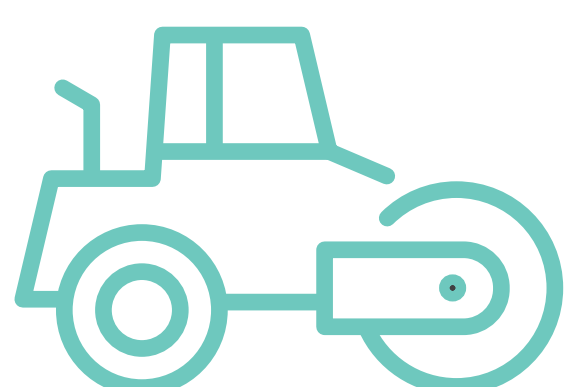
Apply erosion and sediment controls when needed



Retain compatible vegetation



Employ dust control measures



Develop a restoration plan for work areas

Community feedback helps shape Hydro One's projects. We'll continue to engage the community to develop a line with local interests in mind.

Working with property owners

We want to work collaboratively with directly-impacted property owners.



Your choice

You may have choices between providing Hydro One easements or full ownership of the lands required to build the project.

Hydro One will work with directly impacted property owners or their legal representatives.



Independent valuation

Offers are based on site-specific reports from independent third-party appraisers.



Incentives

We offer incentives to work with us towards a voluntary settlement.



Construction

Property owners will be reimbursed for project-related losses.

Designing the transmission line

Over the next several months, we will complete more environmental and technical studies to inform the design of the new line. Detailed design for the line will consider:

- Feedback from directly-impacted landowners
- Structure heights and clearances
- Environmental considerations
- Distance between structures
- Construction methodology
- Topography and land conditions
- Corridor width

Working with Indigenous communities

Hydro One and nine First Nations are partnered to build this project through Hydro One's industry leading First Nation Equity Partnership Model.

The model provides opportunity for First Nations to participate in project development and to invest a 50 per cent equity stake in the transmission line component of the project.

We value the rights, interests and perspectives of Indigenous communities engaged on the Wawa Timmins Power Line and will continue to work in collaboration to build the project.

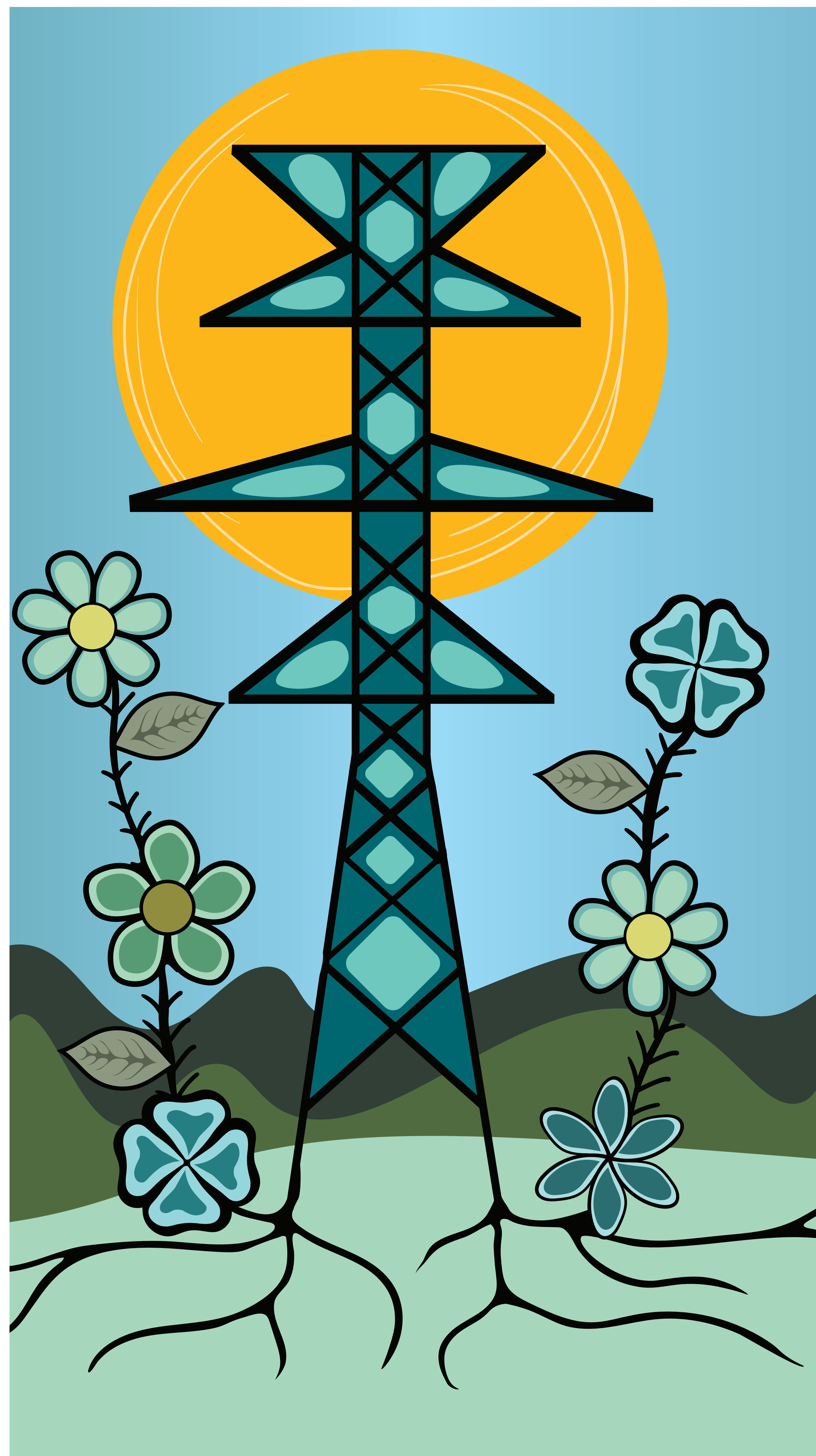


Illustration by Storm Angecone

Training opportunities for Indigenous monitors



Hydro One offers ecology and archaeology fieldwork training for Indigenous monitors.



Participants receive training certificates, and course materials cover both project-specific topics and broader concepts.



Reach out to your community representative if you are interested in participating in future fieldwork opportunities.



Examples of fieldwork and studies

Fieldwork and studies completed to date informed the selection of the preferred route. This work will continue to support the environmental assessment, and includes:

Fieldwork examples:

Wildlife and wildlife habitat

- Wildlife habitat assessments
- Breeding amphibian call counts
- Breeding birds, including owls, songbirds, marsh and wetland birds.

Species at risk (SAR)

- Vascular plants
- Wildlife, including reptiles, birds and mammals

Aquatic assessments

- Fish and fish habitat
- Environmental DNA

Stage 2 archaeological assessment

- Test pitting
- Visual assessment

Study examples:

Stage 1 archaeological assessment

- Background study that evaluates the potential for pre- and post-contact Indigenous and 19th century settler archaeological resources.

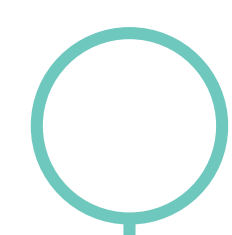
Cultural heritage existing conditions report

- Identifies known and potential built heritage resources and cultural heritage landscapes.

Socio-economic existing conditions assessment

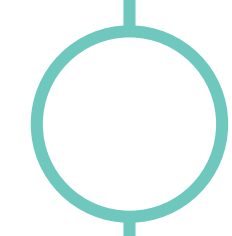
- Analyzes the current social and economic characteristics near the project area, including land use, population, source water protections and the regional economy.

Anticipated project schedule



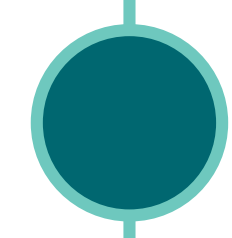
Summer 2025

Start of the Class Environmental Assessment and community engagement.



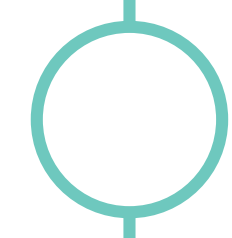
Summer 2025 – January 2026

Ongoing environmental studies, community engagement and info gathering to help assess and refine the route alternatives.



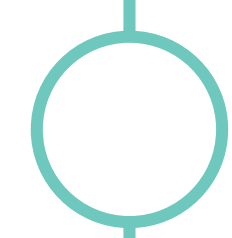
Spring 2026

Preferred route selected and continued community engagement and fieldwork.



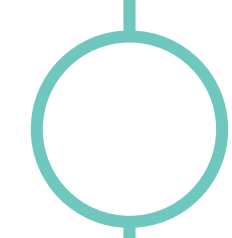
Fall 2026

Public comment period for the draft Environmental Study Report.



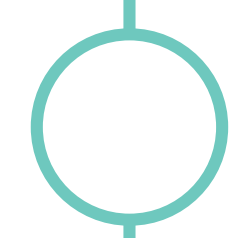
End of 2026

Submission of the final Environmental Study Report and completion of the Class Environmental Assessment.



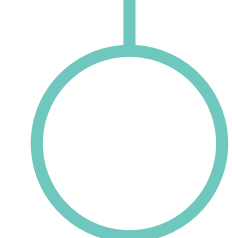
2027

Leave to Construct (Section 92) approval from the Ontario Energy Board.



2028

Construction start.



2030

New transmission line is in-service and construction is completed.

Thank you

To provide comments or to be added to the project contact list, contact us at:



1-877-345-6799



Community.Relations@HydroOne.com



HydroOne.com/WawaTimmins

