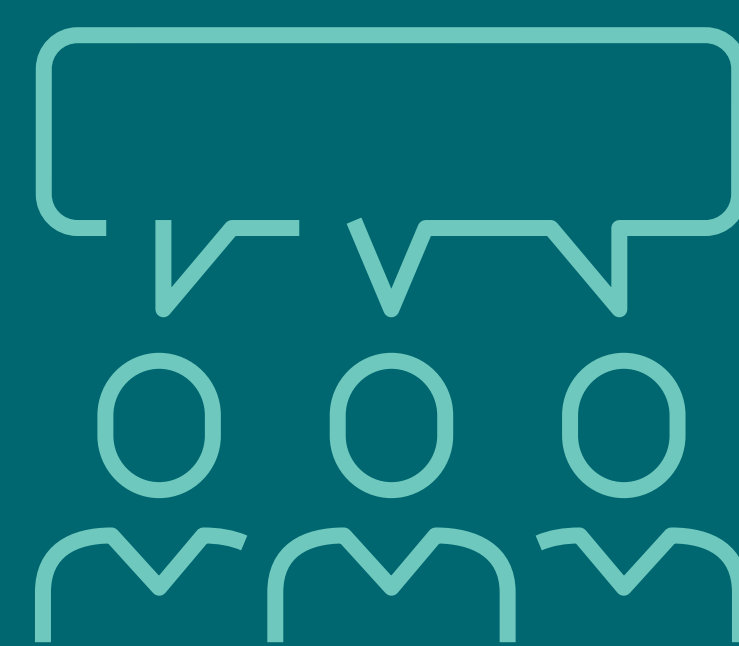
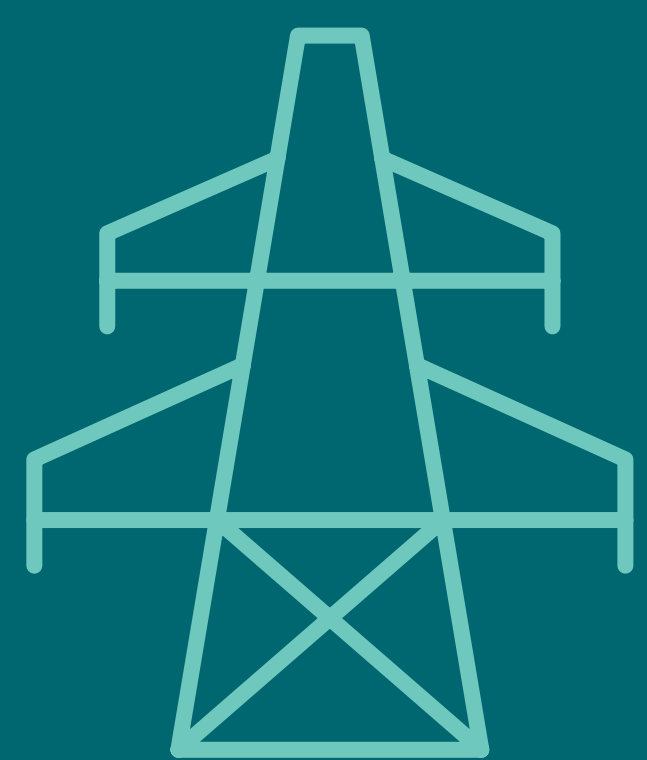


Welcome

Welland Thorold Power Line

Community Open House

November 2024

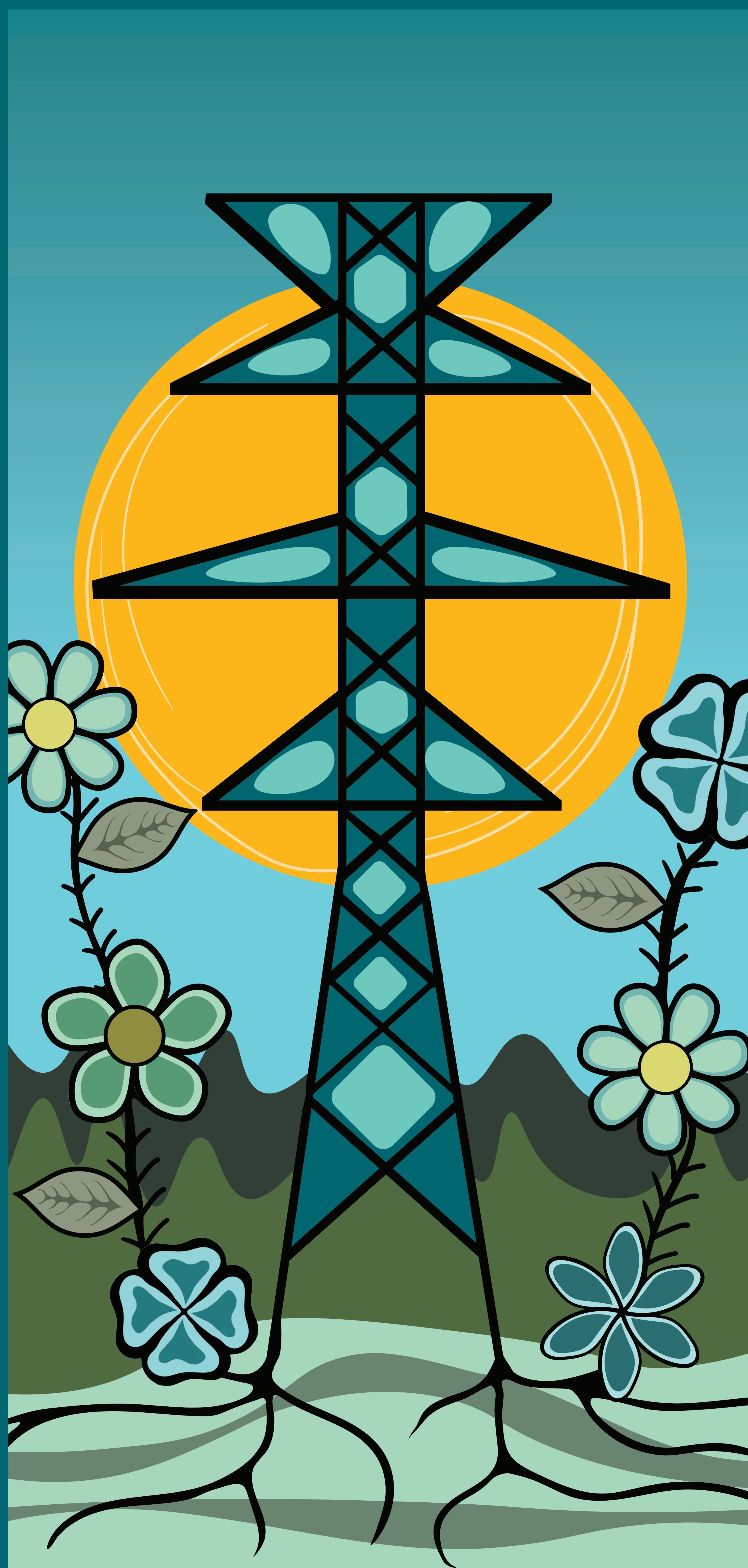


Welland Thorold Power Line Community Open House

Hydro One acknowledges that this project is proposed within the traditional and ancestral lands of the Anishinaabe and Haudenosaunee Nations, which are now home to many diverse people.

Hydro One understands that Indigenous Nations have been here since time immemorial and are stewards of what many refer to as Turtle Island.

We are all Treaty People and with a commitment to our pursuit of reconciliation, we are thankful to be welcomed on these lands as partners to energize our futures together.



Why we're here

- Introduce the Welland Thorold Power Line
- Share what's involved in the project planning
- Present route alternatives being assessed
- Explain the Class Environmental Assessment process
- Provide information on the process to select a preferred route
- Listen to your feedback, answer questions and outline next steps

How the system works

Building infrastructure to meet the energy needs of today and tomorrow involves a number of partners, including:



Builds, owns, operates and maintains electricity transmission and distribution facilities across Ontario



Oversees planning to ensure electricity needs are met both now and in the future

Regulates the electricity market in Ontario, including electricity rates



Hydro One's role in delivering power to you

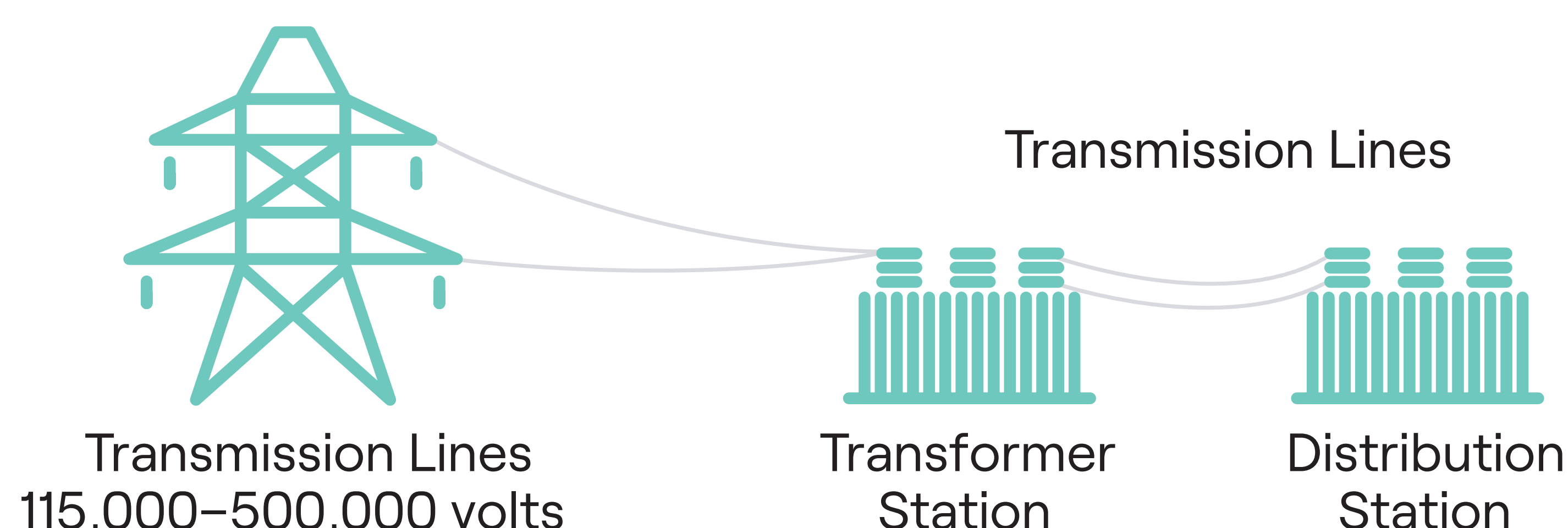
We energize life for people and communities, helping Ontarians live better and have a brighter future.

In your community, we distribute power directly to homes and businesses, as well as provide power to local distribution companies.

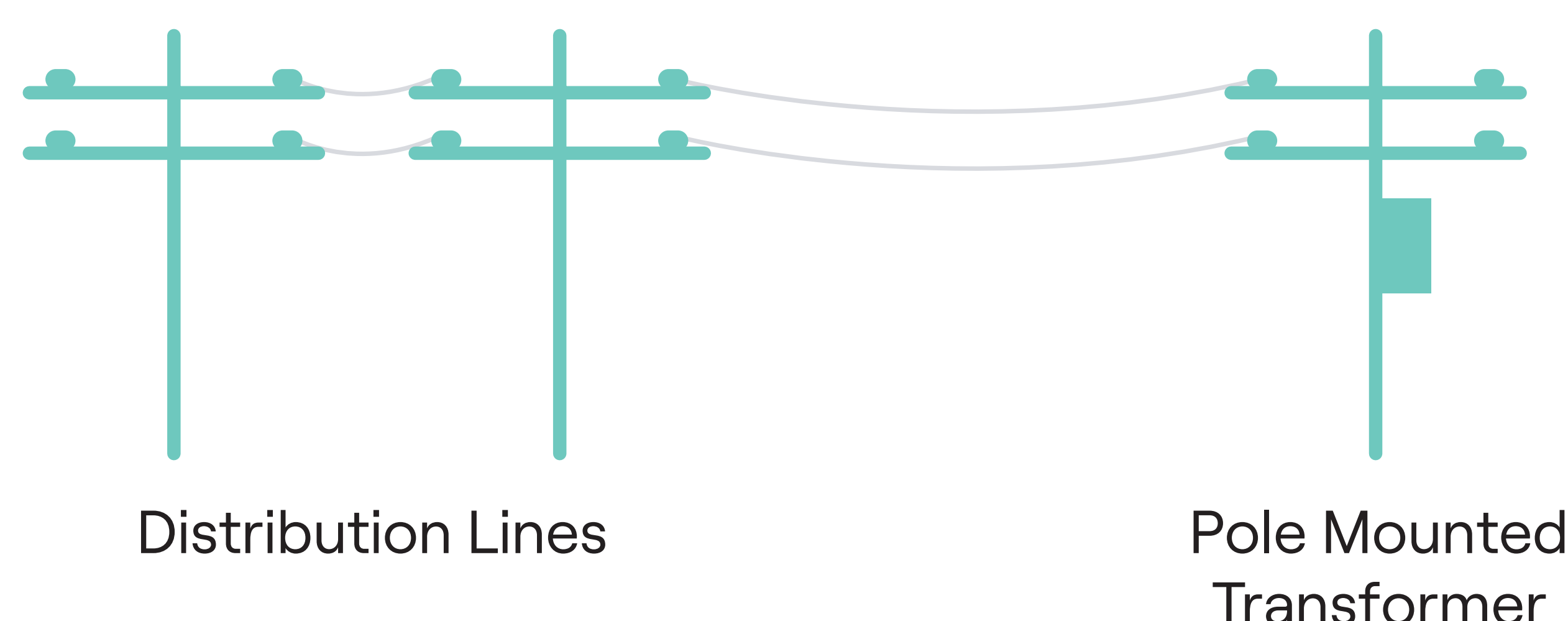
Ontario Power Generation and Private Generating Companies



Hydro One or Licensed Transmitter



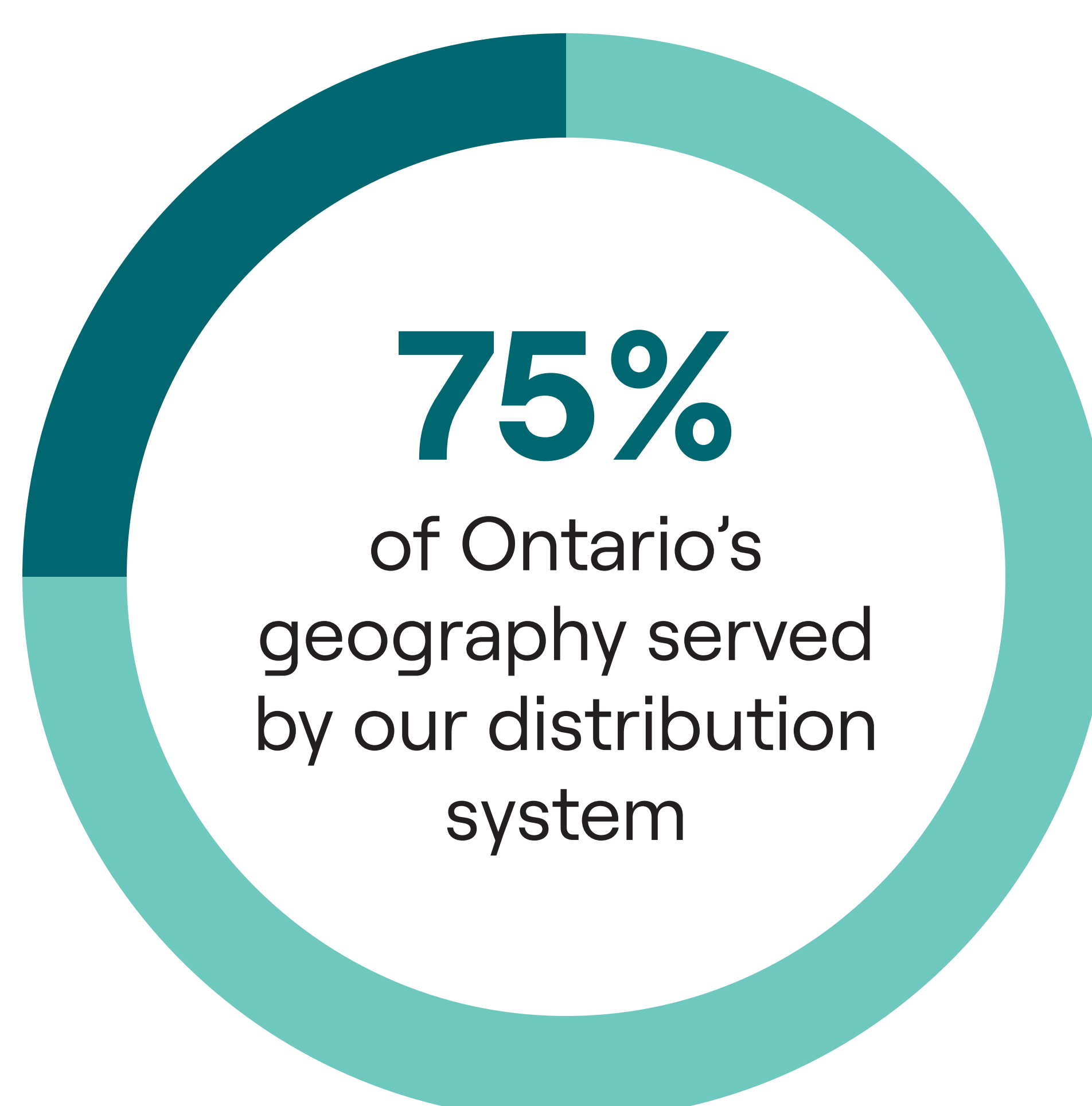
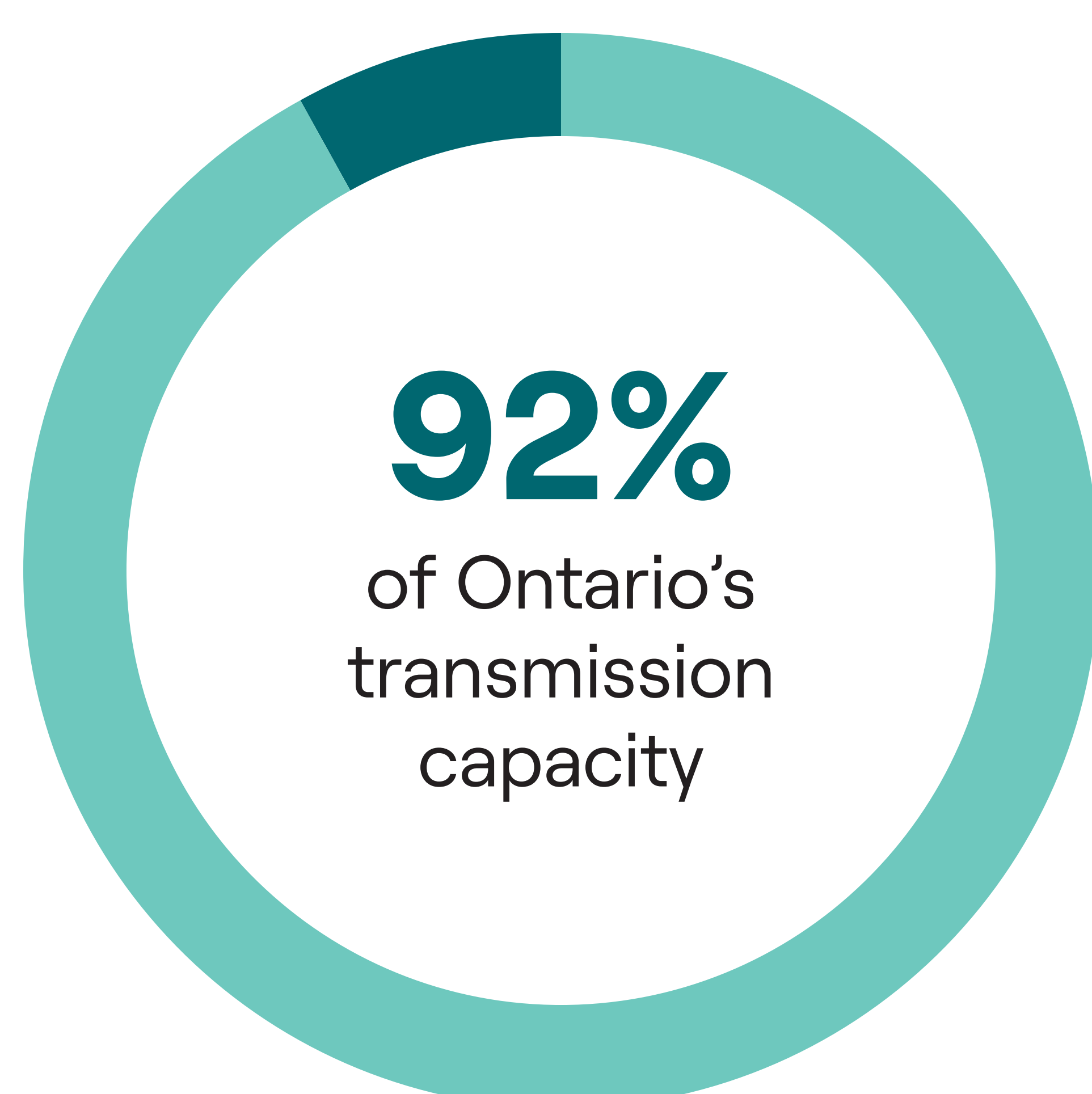
Hydro One or Local Distribution Company



Delivery to your home or business

Hydro One energizes life for people and communities

Our team of approximately 9,700 skilled and dedicated employees proudly build and maintain a safe and reliable electricity system which is essential to supporting strong and successful communities. In 2023, Hydro One invested approximately \$2.5 billion in its transmission and distribution networks, and supported the economy through buying approximately \$2.5 billion of goods and services.



Hydro One's commitment

Hydro One supports communities where we live and work. We are proud to serve the Niagara Region and want to build a power line that communities can see themselves reflected in.

We are here to listen, gather feedback and provide up-to-date information every step of the way. Our team wants to hear community voices to help ensure the project continues to consider your interests.

Project need

Hydro One plans to support growth in the Niagara Region as demand in the area continues to increase.

The Welland Thorold Power Line was identified as part of the Independent Electricity System Operator's (IESO) electricity plans to address future growth in the region.

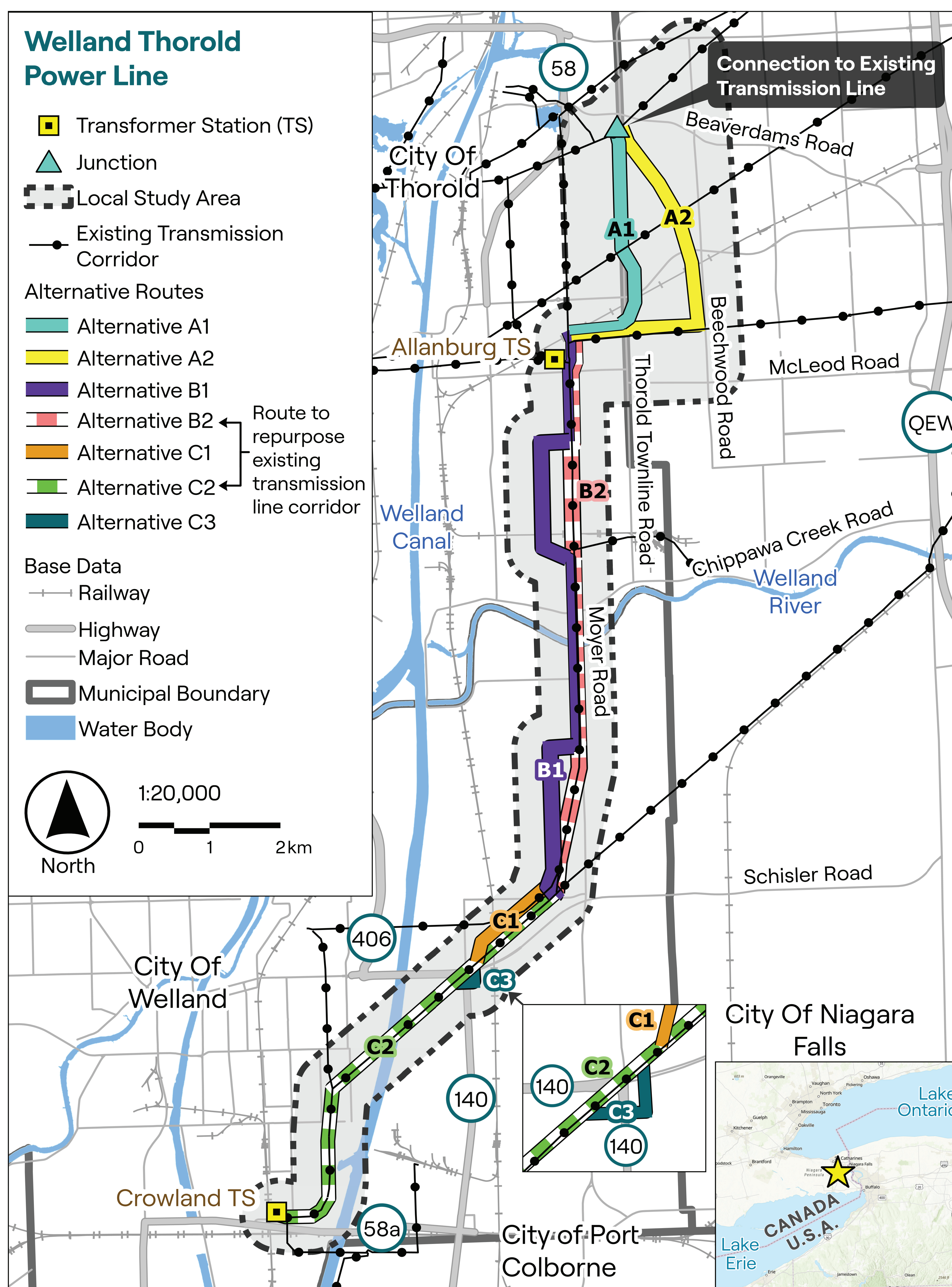
In addition to meeting growing electricity needs, this project will improve the overall resiliency of the Niagara Region transmission network.



Project overview

Hydro One is proposing to construct a new 230-kV double circuit transmission line connected to an existing Hydro One corridor in Thorold and the Crowland Transformer Station (TS) in Welland.

In addition to the line work, a station expansion at Crowland TS on Hydro One-owned lands will be required to connect the new lines.



What is a Class Environmental Assessment?

Ongoing Engagement

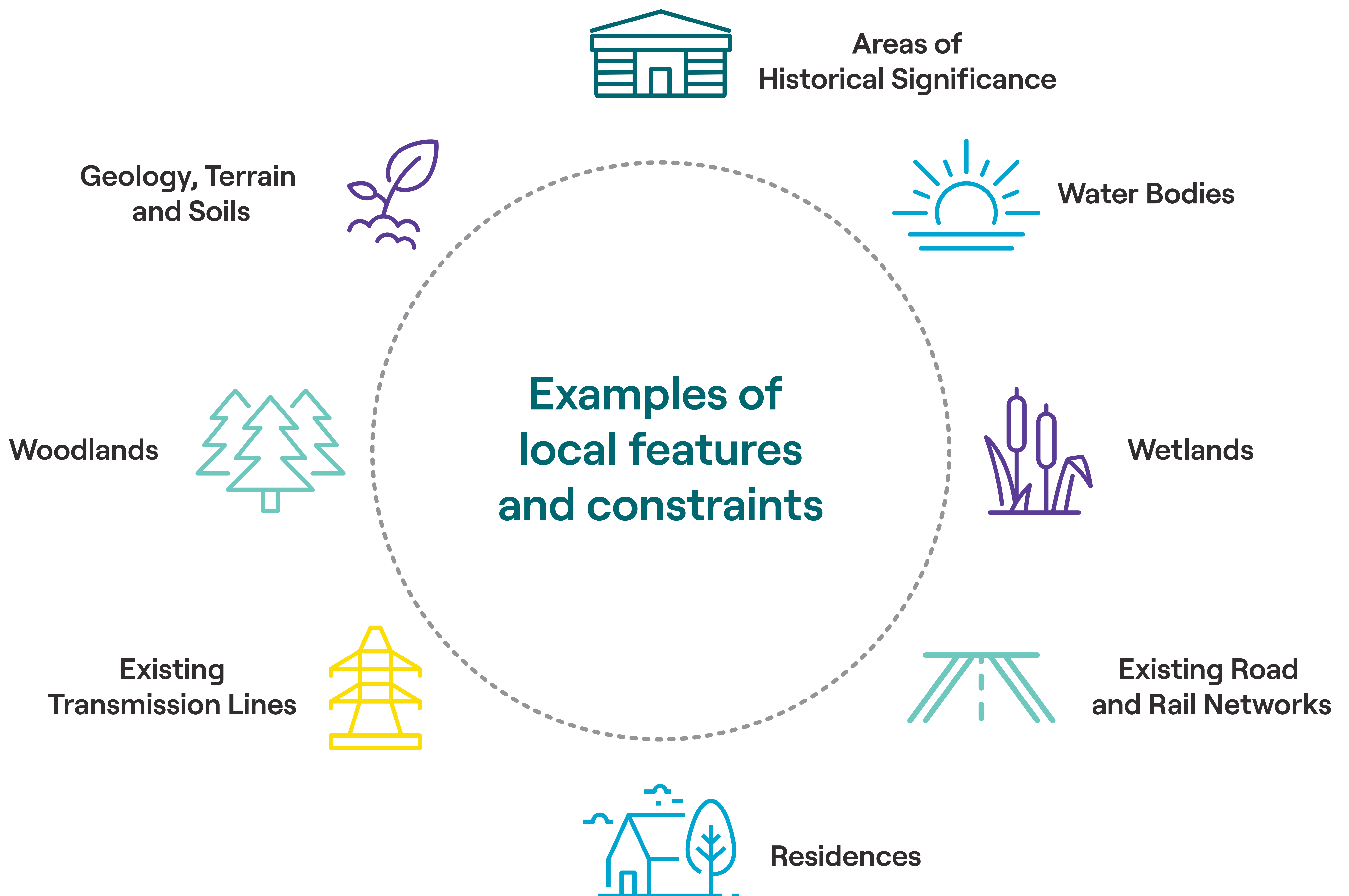
Steps of a Class EA:

- Engage with Indigenous communities, the public, municipalities, interest groups and government agencies
- Collect environmental information
- Identify and evaluate route alternatives
- Select a preferred route
- Identify potential environmental effects and mitigation measures
- Prepare a draft Environmental Study Report (ESR) that will be made available for a 30-day public review and comment period
- Submit the final ESR and Statement of Completion

For more information, see [HydroOne.com/ClassEA](https://hydroone.com/classEA)

Developing the route alternatives

Based on technical, socio-economic and environmental constraints in the route selection study area, as well as local knowledge and input, Hydro One has identified route alternatives, some with variations, for the new transmission line.



Examples of EA studies

Examples of field surveys and data to be collected as inputs to the evaluation of the alternative routes include:



Wildlife and wildlife habitat:

Completing field surveys (e.g. aquatic habitat assessments) and mapping of wildlife and species at risk habitat.



Natural Heritage Systems:

Completing field surveys to characterize and delineate natural environment communities (e.g. woodlands, wetlands).







Cultural heritage areas:

Assessing existing data to determine any potential areas of archaeological and cultural heritage significance.

Evaluation of route alternatives

Routing criteria is developed under four categories and will be used to select the preferred route:

Category	Criteria
 Indigenous culture, values and land use	Proximity to areas of historical significance, current use, and other values
 Socio-economic environment	Existing land use, cultural resources, future development, proximity to homes and businesses
 Natural environment	<ul style="list-style-type: none">• Environmentally significant areas and species at risk• Waterbodies and wetlands• Woodlands, wildlife habitats, and vegetation
 Technical and cost	<ul style="list-style-type: none">• Line length and angles• Crossing of existing infrastructure• Real estate and land rights considerations• Construction complexity

Working with Indigenous Communities

Hydro One is committed to working with Indigenous Communities in a spirit of co-operation and shared responsibility.

Forging meaningful relationships with Indigenous Communities based upon trust, confidence, and accountability is vital to building partnerships and advancing Reconciliation.

Our engagement, advocacy, and strategic direction are set by our Indigenous Relations Policy and led in collaboration with the Indigenous Communities we work with every day.

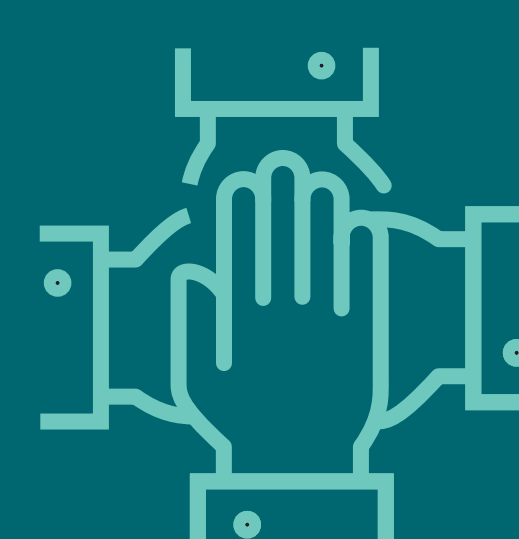
Our four pillars of Indigenous consultation



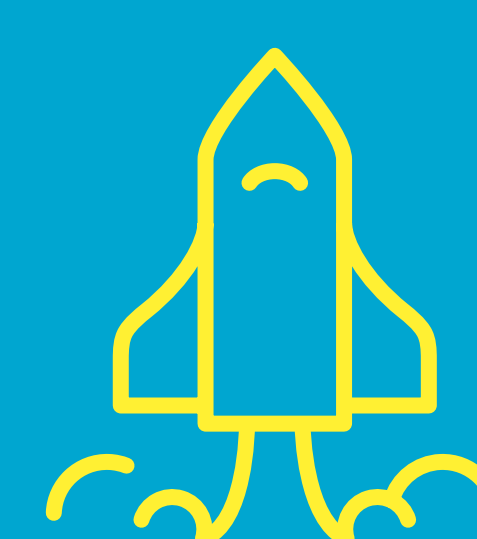
**Excelling at
Engagement**



**Working with
Integrity**



**Holding
Ourselves
Accountable**



**Breaking
Barriers**

Building the Welland Thorold Power Line

To build the new proposed transmission line we plan to:

- Prepare the area and build access roads or utilize existing access wherever possible
- Create construction areas at tower sites, lay down areas, etc., by trimming or removing vegetation
- Install new towers and wires that can carry a voltage of up to 230-kV
- Complete station work at Crowland TS to connect the new line
- Build infrastructure to connect new line to existing 230-kV transmission lines
- Clean up and restore temporary construction access and work areas

Crowland TS expansion

We plan to expand the existing station to accommodate the new lines and associated equipment.

The expanded area will be to the east of the existing station on Hydro One owned lands.



Crowland Transformer Station

Legend

- Existing Transmission Line
- Site Plan
- Current Fence
- New Proposed Fence
- Parcel Boundary
- Alternative Route C2
- Major Road
- Railway

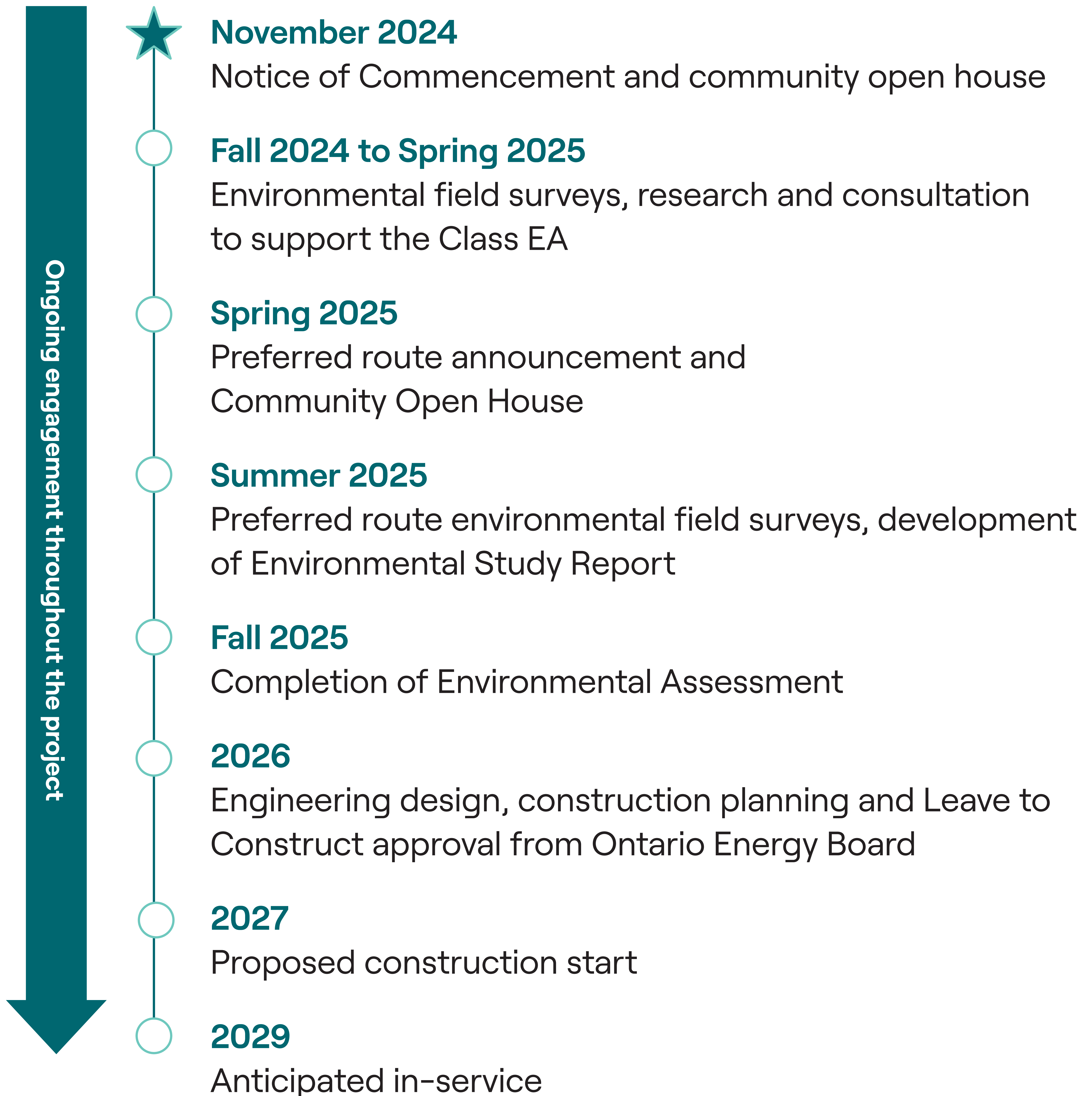


1:500

0 25 50m

Path: K:\2024\2408140\Project\Drawings\StationFigures.dgn

Project timelines



How to get involved

We rely on early, meaningful and open engagement to help shape project planning and we are listening to the community as we build electrical infrastructure to support the Niagara Region's growing economy.

- We will host multiple engagement opportunities to gather input and feedback, which is critical as we plan the project.
- We will provide online resources to learn about the project's progress and provide feedback.
- We will continue to keep communities, residents and members of the public involved in our planning and project activities.
- We encourage you to sign up for our project contact list at HydroOne.com/WTPL.





Thank you!

Your input is important to us. Please share your feedback with our team and complete a comment form before you go. To provide comments or to be added to the project contact list, please call or email:



1.877.345.6799



Community.Relations@HydroOne.com

For the most up-to-date project information and project updates, visit our project website:



HydroOne.com/WTPL