

# Piperville Municipal Transformer Station Line Tap Project

## Notice of Commencement for Class Environmental Assessment

June 2024

Hydro One is committed to energizing life in your area and is working closely with Hydro Ottawa to improve local power supply.

To support Hydro Ottawa's proposed new municipal transformer station (MTS) at 5134 Piperville Road, Hydro One will begin planning for two new line tap connections to connect the new MTS to the existing grid. The line tap connections will be between 110 meters and 200 meters long. A small switching station would also be required within the existing hydro corridor. The project area is shown on the attached map.

Construction of the proposed line tap connections would involve the installation of approximately eleven new steel lattice structures, shown on the attached map as "proposed structures". The switching station would involve installation of a single steel lattice switching structure and a lightning spike within a fenced area. The new structures and switching station will be constructed in Hydro One's transmission corridor. As part of this work, permanent access roads would be established for construction and future maintenance with entrances on Piperville Road and Farmers Way.

### Planning process

Minimizing the environmental effects of our projects and operations is important to us. The planning of this project will follow the "Class Environmental Assessment for Transmission Facilities (2024)" (Class EA for TF), established in accordance with the Ontario *Environmental Assessment Act*. This planning process applies to transmission infrastructure projects that are carried out routinely and have predictable environmental effects that can be readily managed ([www.hydroone.com/ClassEA](http://www.hydroone.com/ClassEA)).

Within the Class EA for TF there are two levels of assessment associated with the type of project and potential environmental effects. These include: i) Screening Process (streamlined), and ii) Full Class EA Process. Based on the examples provided in the Class EA document, it is anticipated that Hydro One's required work will follow the Screening Process, subject to consultation activities and satisfying the applicable screening criteria. Indigenous communities may be consulted and engaged to determine interests and potential project impacts. For more information, please visit [www.hydroone.com/ClassEAScreeningProjects](http://www.hydroone.com/ClassEAScreeningProjects).

Contingent on the outcome of the Class EA process, construction of the line taps and switching station could begin as early as January 2025 and be completed in February 2026.



See reverse for map



### We'd like to hear from you

Your input is important to us. Listening to, and learning from Indigenous communities, residents, businesses, government agencies, and interest groups is part of the process. We're here to help. If you would like any further information on this project or have any questions or feedback, please contact us by August 16, 2024 at:



1.877.345.6799

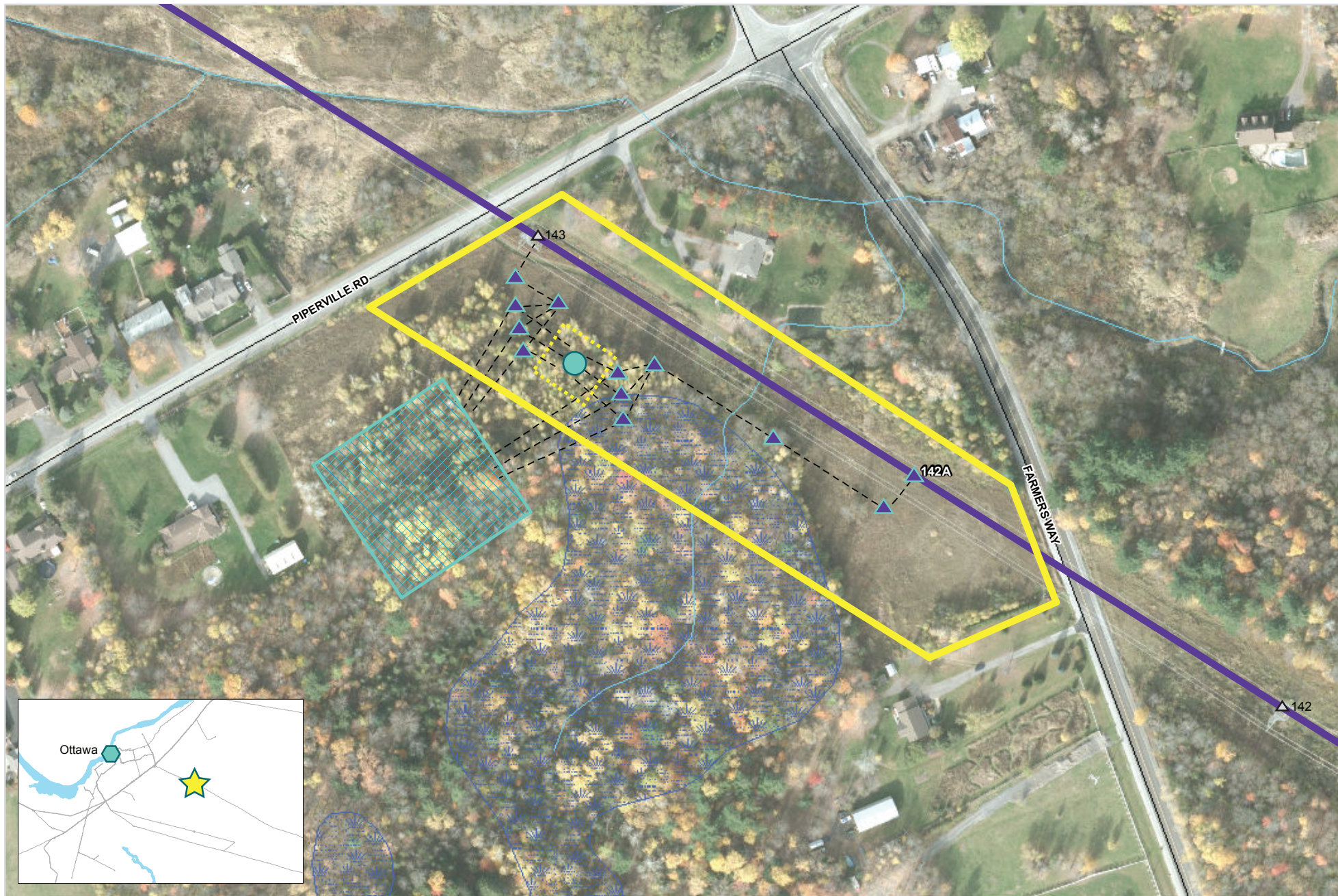


Community.Relations  
@HydroOne.com

All personal information included in your request – such as name, address, telephone number and property location – is collected, under the authority of section 30 of the *Environmental Assessment Act* and is collected and maintained for the purpose of creating a record that is available to the general public. As this information is collected for the purpose of a public record, the protection of personal information provided in the *Freedom of Information and Protection of Privacy Act (FIPPA)* does not apply (s.37). Personal information you submit will become part of the available public record unless you request that your personal information remain confidential.

[HydroOne.com/  
PipervilleMTS](http://HydroOne.com/PipervilleMTS)





- |  |                      |   |                          |
|--|----------------------|---|--------------------------|
| △ Existing Structures                    | ▲ Proposed Structure | - - - Proposed 230 kV Line Tap                                  | — Roads                  |
| Existing 230 kV Transmission Line (L24A) | ● Proposed Switch    | ▤ Piperville Municipal Transformer Station (under construction) | — Watercourse            |
|  |                      | ⋯ Proposed Piperville Switching Station                         | ▤ Wetlands               |
|  |                      |   | ▭ Hydro One Right-of-Way |

## Piperville Municipal Transformer Station Line Tap Project



1:2,200

0 15 30 Meters

