

COMMUNITY NOTICE



Class Environmental Assessment for Minor Transmission Facilities Wawa Transformer Station Component Replacement

Ensuring that families and businesses have safe and reliable power is our number one priority at Hydro One. That is why we are beginning a Class Environmental Assessment (EA) for the Wawa Transformer Station (TS) Component Replacement Project. The electrical components within the existing Wawa TS are approaching end of life and require replacement to maintain reliable electrical supply in the area. The station is situated north of Anjigami Lake, and adjacent to an unofficial road, Anjigami Lake Road, off Highway 101, please see map.

As part of the project, two transformers and associated equipment will be replaced and the station will be reconfigured to accommodate the replacement work, resulting in two new buildings being erected and other buildings on site being demolished, replaced or relocated. In addition, the following work will be required:

- The station fence will be expanded in the southeast within the Hydro One property to integrate the adjacent Anjigami TS into Wawa TS.
- The approximately 25 by 25 metre area around the existing line disconnect switch located to the south of the station will be paved.
- The circuits W23K, P25W and P26W will be re-terminated at the eastern portion of the station, requiring a new alignment, approximately 300 metres in length.
- Modifications to the transmission lines in the immediate vicinity will be required involving installation, replacement and removal of structures.

This project is subject to the Class Environmental Assessment for Minor Transmission Facilities (November 2016) (Class EA for MTF) in accordance with the Ontario Environmental Assessment Act. The Class EA for MTF is a streamlined process to ensure that transmission projects that have a predictable range of effects have feasible environmental mitigation or protection measures in place. The Class EA for MTF can be found at [HydroOne.com/ClassEA](https://www.hydroone.com/ClassEA).

As this project is small scale with minimal environmental effects, Hydro One will follow the streamlined EA Screening Process (confirmed upon satisfying 16 screening criteria). The project being planned is similar to examples provided within the Class EA document where the Screening Process would typically apply. As such, contingent upon consultation activities and satisfaction of the applicable criteria, it is anticipated that this project will follow the Screening Process.

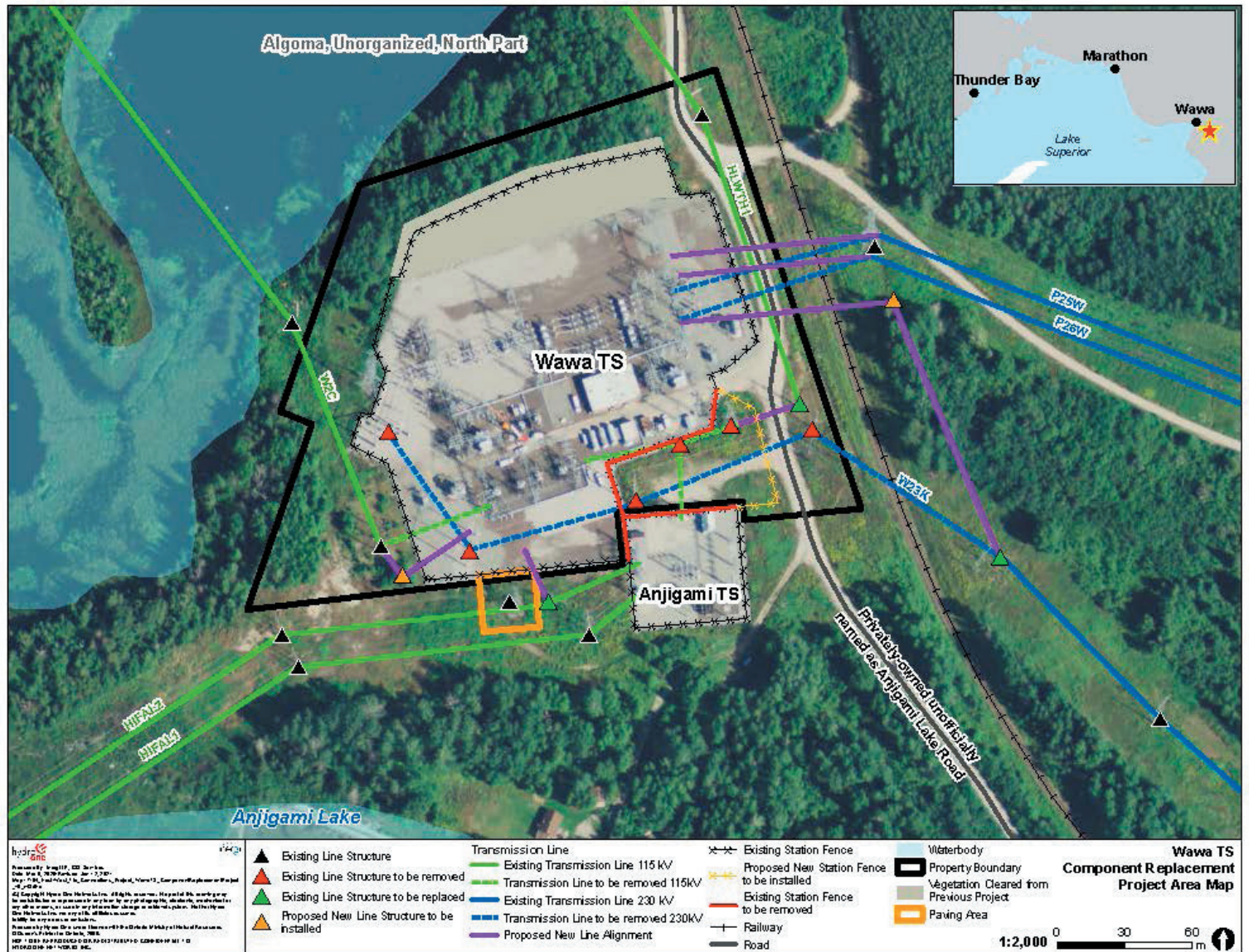
Following the Class EA process, construction is planned to begin as early as October 2021 and be completed by the end of 2024. We welcome your comments and feedback regarding the environmental work for this project. If you have any questions, or would like additional information regarding this project, please contact:

Hydro One Community Relations
1.877.345.6799
Community.Relations@HydroOne.com

COMMUNITY NOTICE



Class Environmental Assessment for Minor Transmission Facilities Wawa Transformer Station Component Replacement



Freedom of Information and Protection of Privacy Act

All personal information included in a submission – such as name, address, telephone number and property location – is collected, maintained and disclosed by the Ministry of the Environment, Conservation and Parks for the purpose of transparency and consultation. The information is collected under the authority of the *Environmental Assessment Act* or is collected and maintained for the purpose of creating a record that is available to the general public as described in s. 37 of the *Freedom of Information and Protection of Privacy Act*. Personal information you submit will become part of a public record that is available to the general public unless you request that your personal information remain confidential. For more information, please contact the Ministry of the Environment, Conservation and Parks' Freedom of Information and Privacy Coordinator at 416-314-4075.