

Appendix E – Community Information Centre Materials

This Page Intentionally Left Blank



Hydro One's Lake Superior Link Project

Date – Time – Venue Location

SIGN-IN SHEET *(Please Print Clearly)*

Name	Organization/ Affiliation	Address	Email OR phone number

The personal contact information you provide to Hydro One will be used for the sole purpose of communicating information and updates about this project. It will not be shared with other organizations.



COMMENT FORM
Lake Superior Link Transmission Project
 Community Information Centre
Date – Venue Location

Thank you for attending Hydro One’s Community Information Centre (CIC)! Please take a moment to answer a few questions, or take this comment form home and send it to us at your convenience. Your input and comments on our proposed project, and Environmental Assessment Terms of Reference are important to us.

1. Did you find tonight’s CIC helpful in understanding the proposed project in your community?
 Yes / No
2. Did you have an adequate opportunity to express your views/ask questions to Hydro One’s project team?
 Yes / No
3. How did you hear about tonight’s CIC?
 ___ radio ad ___ newspaper ad ___ notice delivered to house ___ other
4. Do you have any comments, questions, or concerns to share regarding tonight’s drop-in and/or this project?
 (Additional space on reverse)

Please provide your contact information so that we can follow-up with you on your comments or questions, and add you to our project contact list for future communications.

Name & affiliation (if any): _____

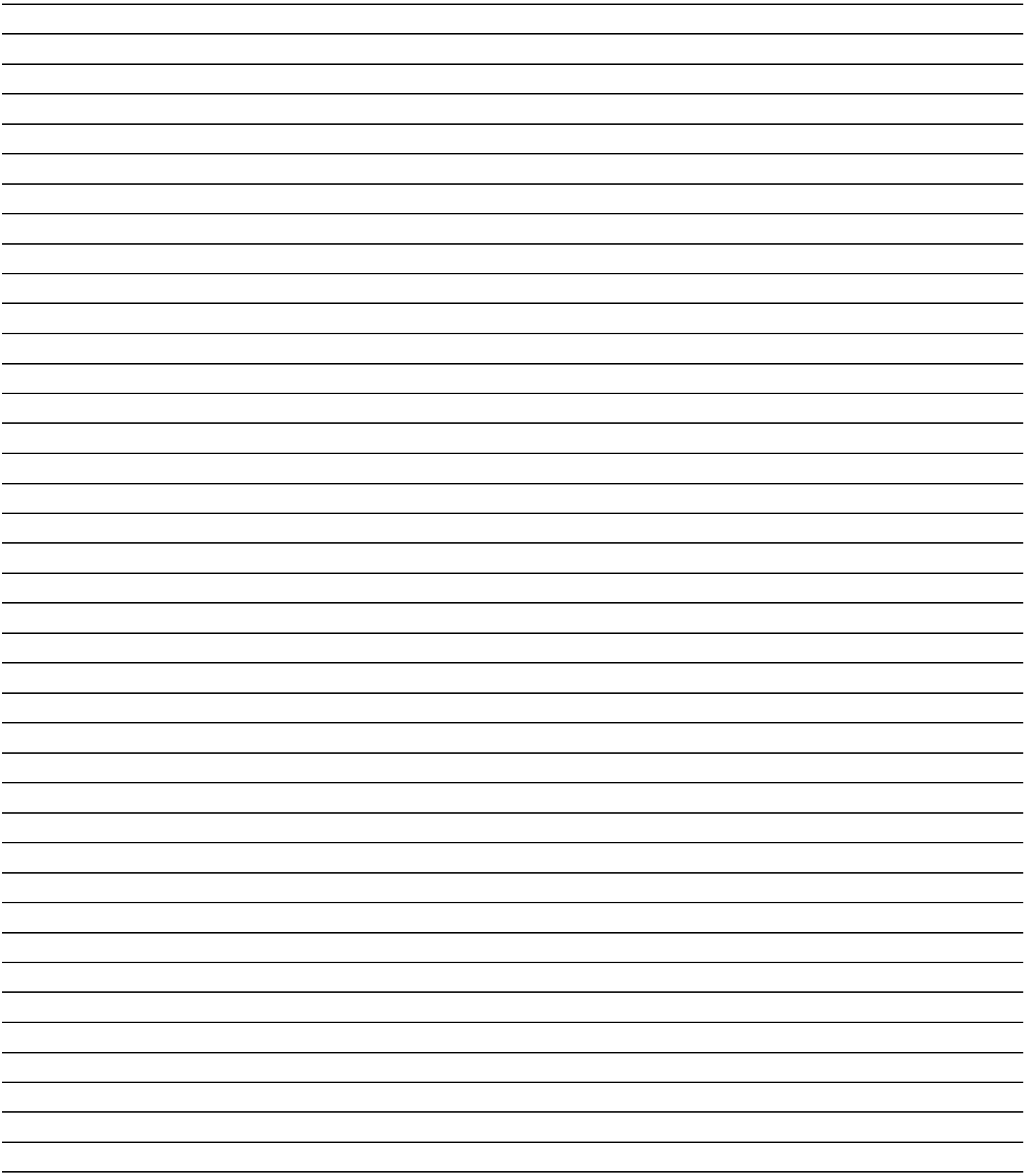
Mailing address & postal code: _____

Tel: _____ Email: _____

Please leave your comment form in the comment box at this meeting or send it in by *insert date* to:

Community Relations, Hydro One
 483 Bay Street, 6th Floor, South Tower, Toronto, ON M5G 2P5
 Tel. 1-877-345-6799; Fax: 416-345-6984; Email: Community.Relations@HydroOne.com

Please be advised that any of your personal information contained on this comment form will become part of the public record files for this project, and may be released, if requested, to any person, unless you state on this form that you do not consent to your personal information becoming part of the public record files and disclosed to any person upon request.





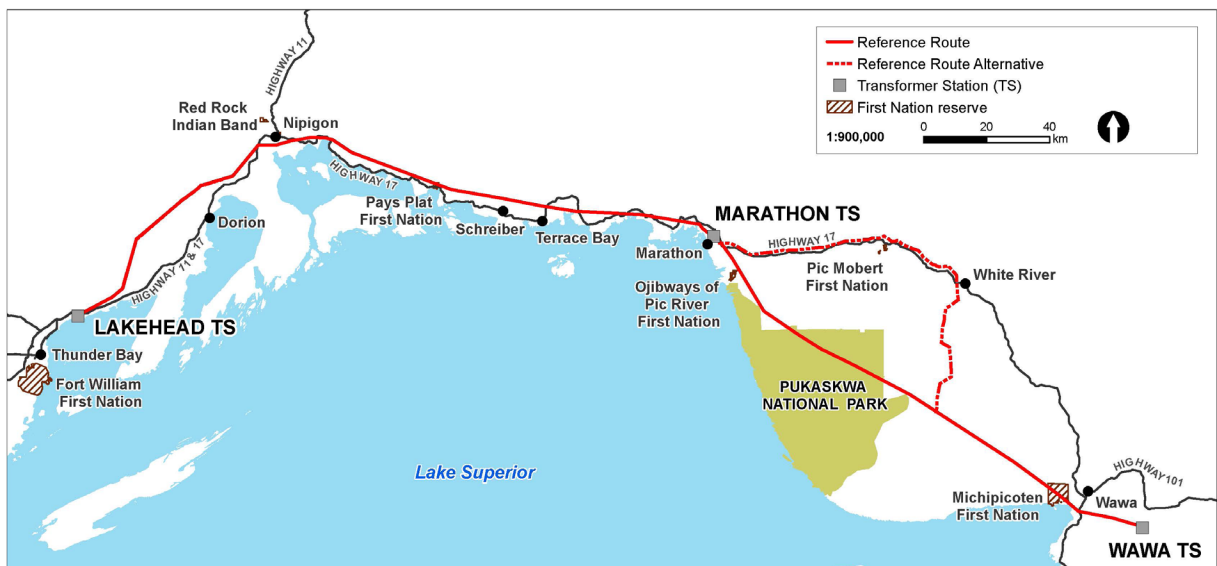
Welcome

to our Community Information Centre

Lake Superior Link Project

Purpose of today's Community Information Centre (CIC)

- Hydro One has initiated an Environmental Assessment (EA) for the Lake Superior Link project.
- We have issued a Notice of Commencement of Terms of Reference (ToR) for the EA.
- The Terms of Reference is the framework for an EA. The ToR document will outline how the EA will be conducted, what will be assessed, and how interested parties such as the public, Indigenous communities, local municipalities and government regulators will be engaged throughout the EA.
- The ToR will discuss the reference route and the alternative to the reference route, shown below.
- A draft ToR is available today for your review. A copy is also posted on our project website.



What is the Lake Superior Link

- In its *Updated Assessment of the Need for the East-West Tie Expansion, 2017*, the Independent Electricity System Operator (IESO) confirmed that a new transmission line "...continues to be the recommended alternative to maintaining a reliable and cost-effective supply of electricity in Northwestern Ontario for the long term."
- The Lake Superior Link project is an approximately 400 kilometre, double-circuit 230 kilovolt transmission line which would primarily be built on or adjacent to Hydro One's existing East-West Tie transmission corridor between Lakehead Transformer Station (TS) in the Municipality of Shuniah and Wawa TS, just east of Wawa.
- Within Pukaskwa National Park, the existing line would be upgraded without widening the corridor. In addition to the reference route, an alternative route around the Park is also being considered.

The Hydro One advantage

Hydro One's proposal is the **most cost-effective solution** to deliver the required power supply to northwestern Ontario while also **minimizing the environmental footprint**.

When compared to other proposals to build the East-West Tie line:

Hydro One's reference route is approximately 50 km shorter overall.

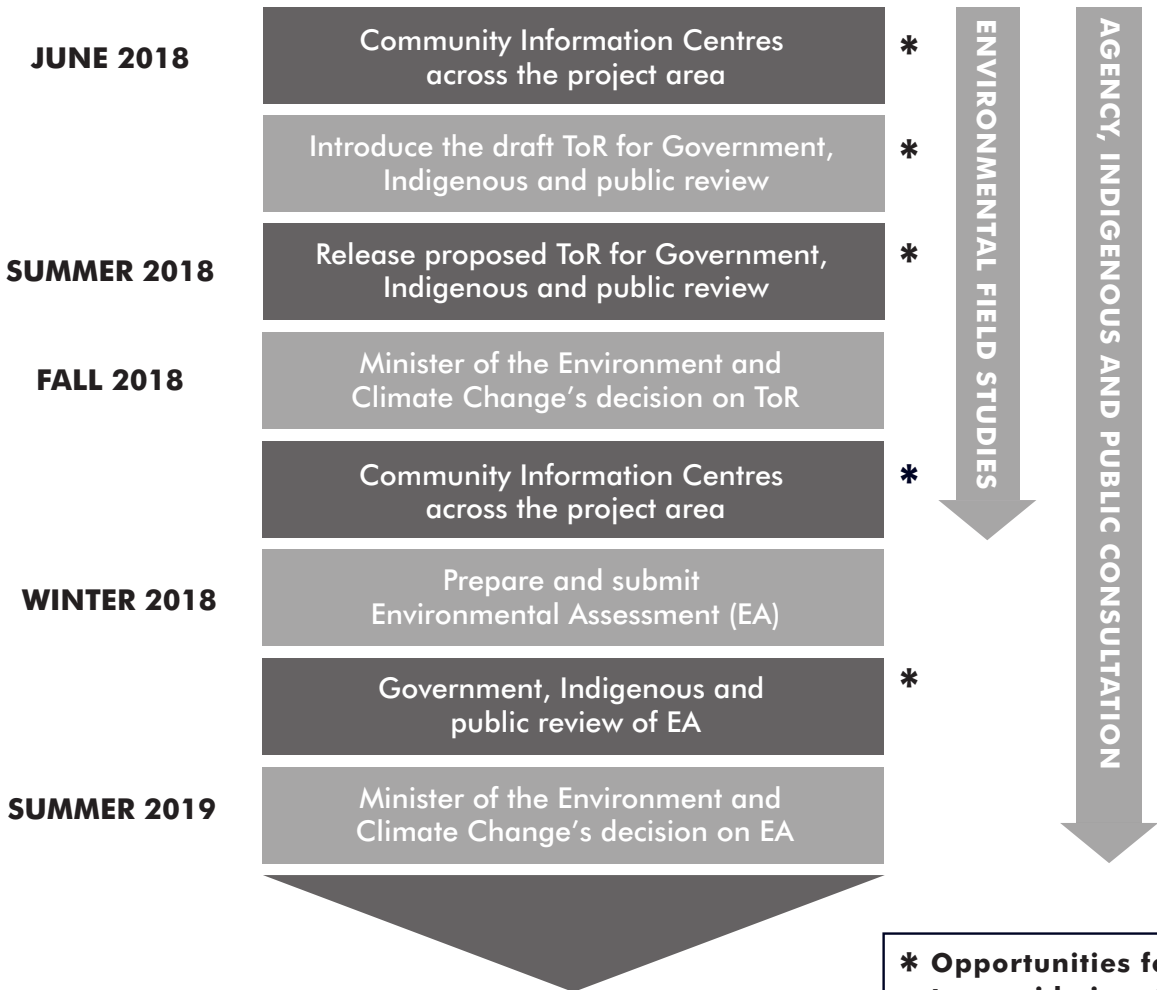
- Hydro One has the unique ability to modify existing infrastructure through Pukaskwa National Park, significantly reducing the length of the overall transmission line and reducing impact on the Park.

Our reference route would use approximately 50% less land than NextBridge's proposal and our reference route alternative would use 36% less.

- Hydro One will not be cutting new corridor or access routes through Pukaskwa National Park.
- For the majority of the transmission line, Hydro One is proposing a narrower corridor (ranging from approximately 37 to 46 metres.)

ANTICIPATED TIMELINE

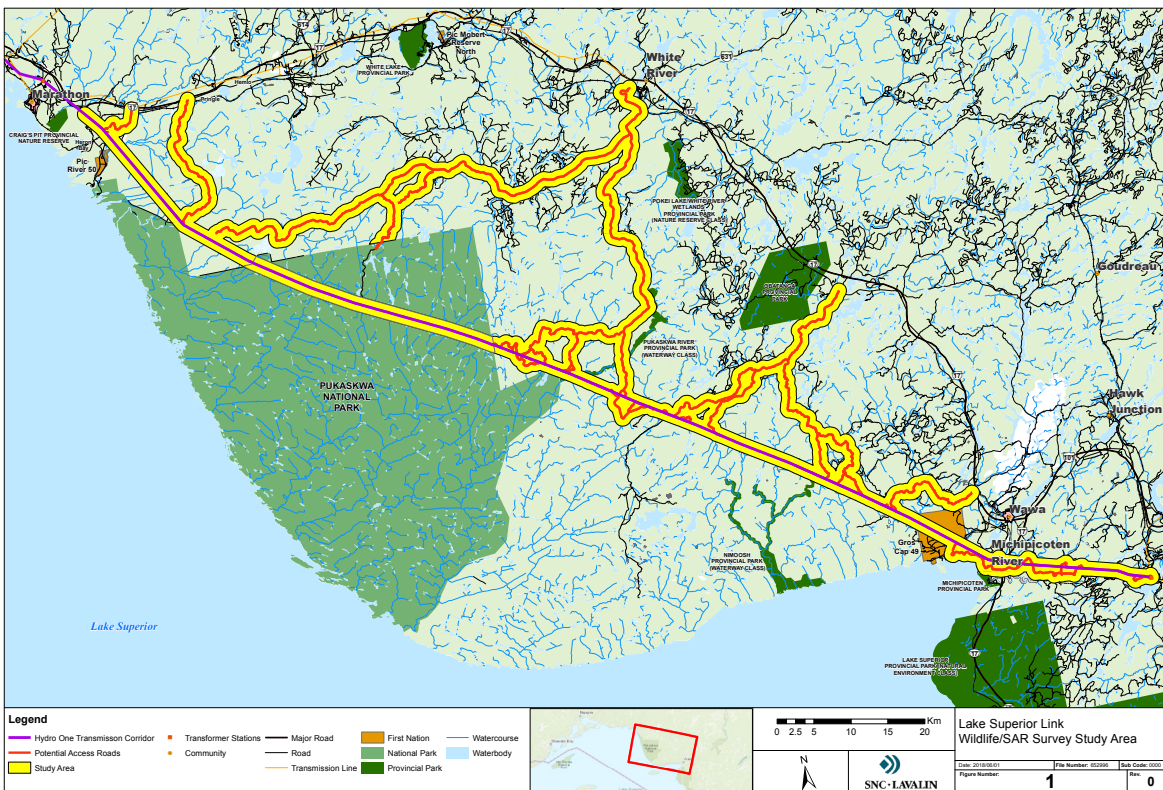
STUDIES AND CONSULTATION



Pukaskwa National Park

Hydro One has the unique ability to follow its existing transmission corridor through Pukaskwa National Park. The reference route will make use of Hydro One’s existing land rights through the Park. For this 35 km section, Hydro One will use single towers with four circuits to avoid any widening of the corridor.

Hydro One will be undertaking a wide range of environmental field studies within Pukaskwa National Park as part of the reference route section. These studies will be used to assess potential impacts, identify mitigation and support provincial and federal permitting requirements.



Environmental field surveys

- The majority of this route has been assessed through previous field studies. To avoid duplication of effort, the LSL project field program will focus on those areas not surveyed to date, or where data gaps have been identified. This includes Pukaskwa National Park, the Dorion area, temporary and permanent access roads, laydown areas and fly yards.
- Field surveys are tentatively scheduled to occur from early summer to mid-fall 2018.
- These will include visual assessment, wildlife, aquatic habitat, vegetation classification, species at risk and archaeology.
- Field surveys will:
 - Identify and document the existing biological conditions present within the study area; and
 - Include aquatic, vegetation and wildlife studies, including species at risk.
- Due to time sensitive survey requirements for species at risk, Hydro One completed a winter survey for Woodland Caribou in March 2018 focusing on the corridor between the northeastern boundary of Pukaskwa and Wawa. In addition, time sensitive surveys for species at risk bats and Whip-poor-will were also conducted in late May 2018.

What approvals are required?

- Prior to constructing the Lake Superior Link, Hydro One must seek and obtain approval from the Ontario Energy Board (OEB), the Ministry of the Environment and Climate Change (MOECC), as described below, and other permits and approvals as required.
- Both the OEB and MOECC approvals include opportunities for public and Indigenous community participation and input into the decision-making process.
- The “Leave to Construct” to build the East-West Tie has not been awarded by the OEB.

OEB

Leave to Construct
(S. 92 of the *OEB Act, 1998*)

In February 2018, Hydro One filed an application with the OEB to build, own and operate the Lake Superior Link project. Once approved, all conditions are met and land rights acquired, Hydro One will be permitted to begin construction.

The OEB review of Hydro One’s application includes provisions for public consultation, stakeholder and Indigenous participation.

MOECC

Environmental Assessment (EA) approval
under the *Environmental Assessment Act*

Terms of Reference (ToR) - Step 1

A ToR establishes the framework for the preparation and review of the EA. It outlines how the EA will be conducted and helps ensure that the public, Indigenous communities and government agencies know what will be considered.

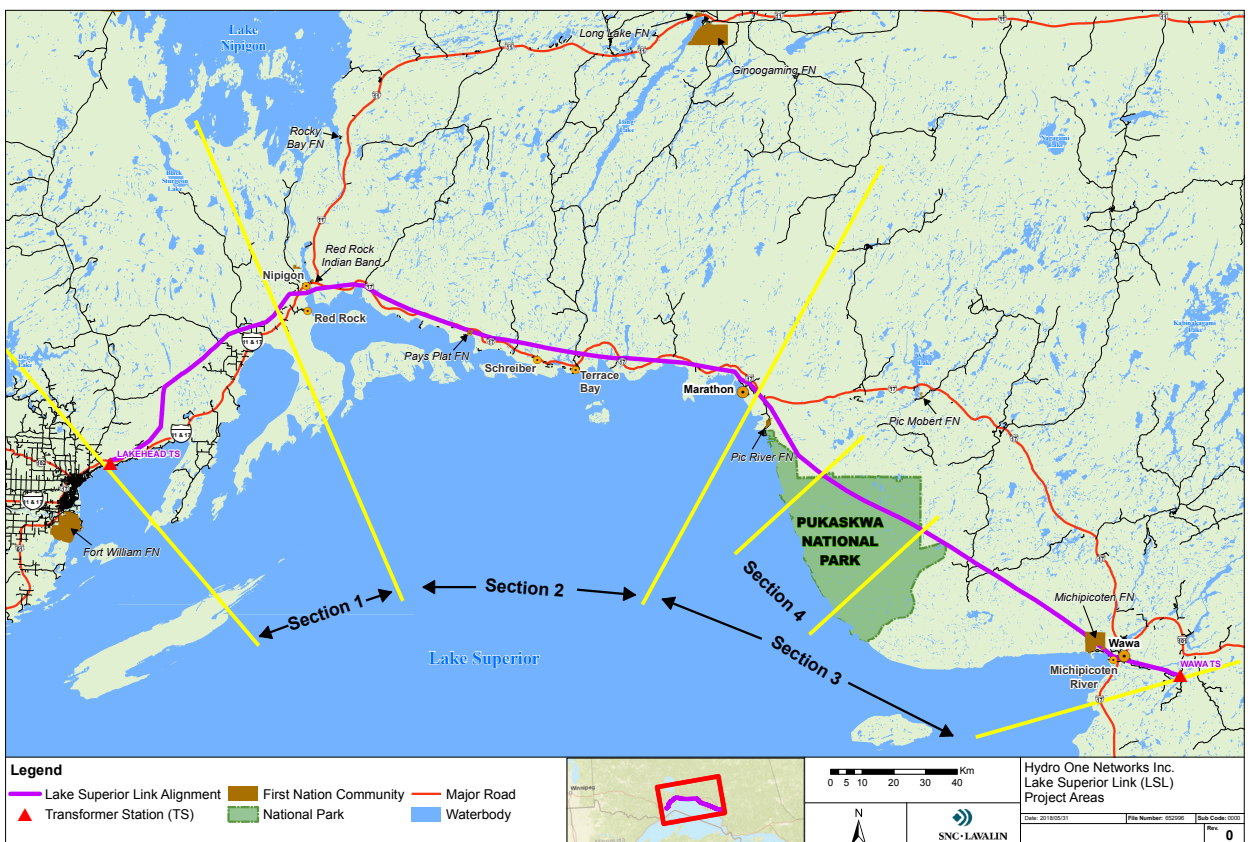
EA study - Step 2

This EA study will compare Hydro One’s reference route to its reference route alternative. It will consider the design alternatives, measures to avoid and minimize potential effects identify advantages, disadvantages, and net effects of the alternatives.

Project work areas

Construction of the new transmission line is planned to begin in fall 2019 and be completed by the end of 2021. Work will be divided into four sections:

- **Section 1:** Lakehead Transformer Station (TS) to Nipigon (90 km)
- **Section 2:** Nipigon to Marathon TS (145 km)
- **Section 3:** Marathon TS to Wawa TS (excluding Pukaskwa National Park) (133 km)
- **Section 4:** Inside Pukaskwa National Park (35 km)



Hydro One's vision for the North

- Powering northern Ontario is an important part of our history and future at Hydro One.
- Our local teams and workforce, based in Thunder Bay, Nipigon, Marathon and Algoma, bring their best to these communities every day.
- The LSL will meet current and future electricity needs in northern Ontario to power homes and business.
- Along with the LSL, we are in the planning stages for a new transmission line between Thunder Bay and Dryden.



Working with local communities

- **We want to hear from you** as we explore community investment opportunities and partnerships that will benefit the project areas.
- Once engaged on the project, Hydro One will explore and discuss various benefits for Indigenous communities including but not limited to capacity building to participate in the engagement process, procurement and sub-contracting opportunities, job training, employment and equity participation.
- We are also committed to discussing potential partnership opportunities and other economic benefits with Indigenous communities on this project.



What if Hydro One's proposed corridor is located on my property?

- Hydro One's land acquisition service provider, Contract Land Staff, will be contacting all affected property owners to discuss the land rights acquisition program.
- Hydro One will require early access to the proposed transmission corridor to obtain relevant project and property information. Early access activities include:
 - environmental and engineering studies;
 - legal surveys and property appraisals; and
 - woodlot valuations.
- Hydro One has developed project-specific Land Acquisition Compensation Principles (LACP) which are based on past experience with transmission projects, and aim to:
 - treat property owners in a fair, transparent, and consistent manner;
 - compensate based upon independent property valuations;
 - offer choice to property owners (easement or fee simple land rights acquisition); and
 - secure timely voluntary property acquisitions by offering incentives.



Thank you
for joining us today!

Your input is important to us.

Please share your feedback on our Environmental Assessment Terms of Reference, and project, with our team.

Please complete a comment form before you go.

To provide comments or to be added to the project contact list, please call or email:

COMMUNITY RELATIONS

t: 1-877-345-6799

e: Community.Relations@HydroOne.com

For the most up-to-date project information and updates you can also visit our project website:

www.HydroOne.com/LakeSuperiorLink

An aerial photograph of a vast forested landscape in northern Ontario. In the foreground, several high-voltage power transmission towers stand prominently, with power lines stretching across the terrain. The forest is a mix of green and yellow, suggesting an autumn setting. In the far distance, a range of hills or mountains is visible under a clear sky, with several wind turbines silhouetted against the horizon.

Hydro One's

NORTHERN PRESENCE AND VISION

Powering northern Ontario is an important part of Hydro One's past and future. We live and work in the North and focus every day on delivering a safe and reliable supply of electricity to local homes and businesses.

We have applied to the Ontario Energy Board and initiated an Environmental Assessment to build a new transmission line between our Lakehead Transformer Station (TS) near Thunder Bay and our Wawa TS near Wawa. Our project is the Lake Superior Link.

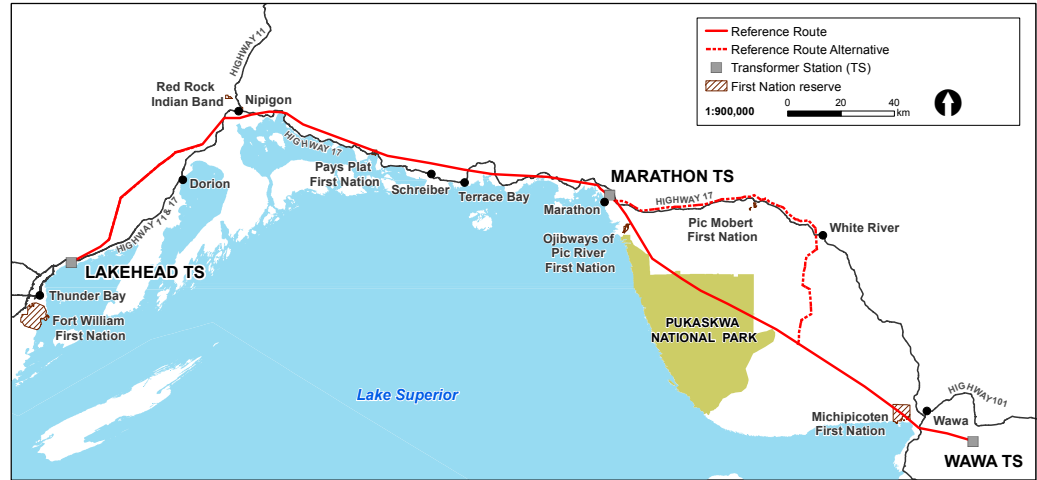
In addition to this project, we are in the planning stages for a new transmission line between Thunder Bay and Dryden, as well as several line and station refurbishments which will strengthen and power the North.

With more than 100 years of history building the electrical backbone of northern Ontario, Hydro One understands what it means to have meaningful community partnerships. The investments we make in the North will bring sustainable long-term social and economic benefits to the communities we serve.

LAKE SUPERIOR LINK PROJECT

We know the Lake Superior Link will provide the capacity needed for regional growth and development and we have the Ontario-made solution to deliver it. We will deliver value for Ontario electricity customers and provide real, tangible benefits for communities, including our Indigenous partners in the region.

Our commitment to you is that we will deliver the right project at the right price and that we will always be there for you every day after that – just like we are today.



BENEFITS OF HYDRO ONE'S PROPOSAL



CREATING
JOBS



DEVELOPING
PARTNERSHIPS



POWERING
ECONOMIC
GROWTH



DELIVERING
COST
SAVINGS