

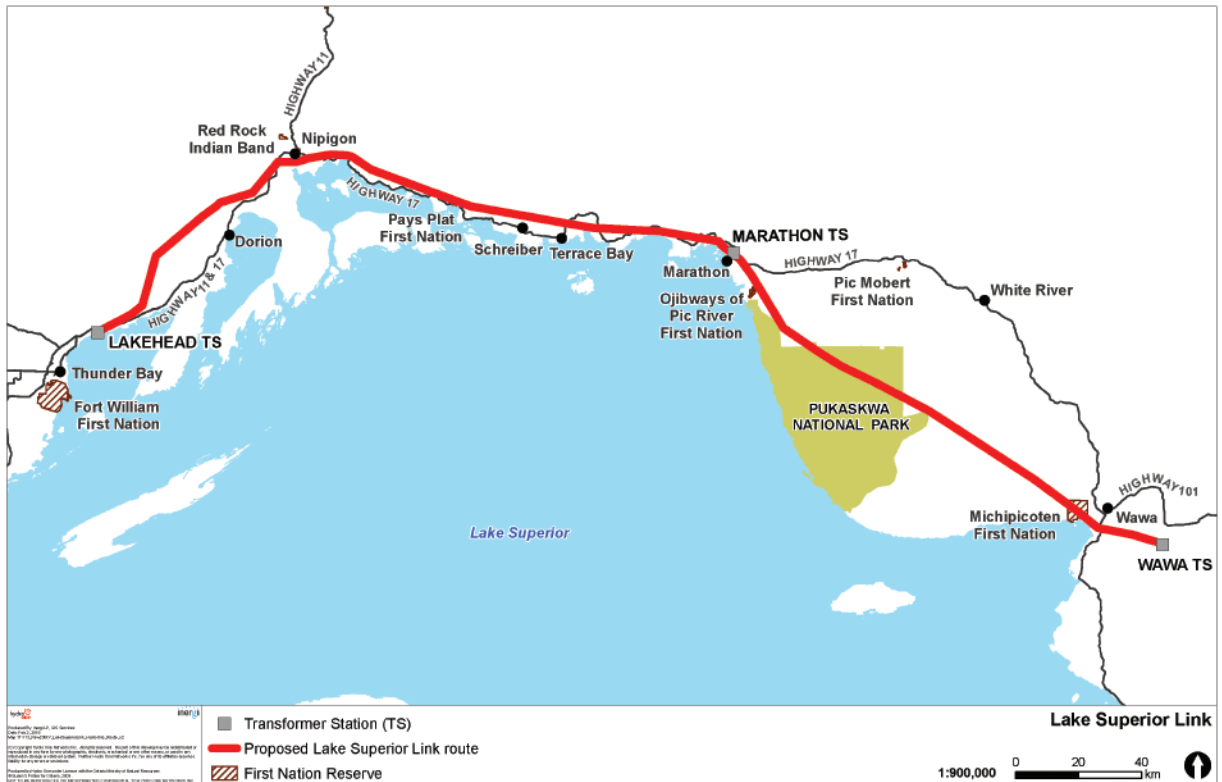
**LAKE SUPERIOR LINK**  
TRANSMISSION PROJECT



**Welcome**

## What is the Lake Superior Link?

A 400 kilometre, double-circuit 230 kilovolt transmission line that would be built primarily on or adjacent to Hydro One's existing East-West Tie transmission corridor between Lakehead Transformer Station (TS) in the Municipality of Shuniah and Wawa TS near Wawa.



## Hydro One's vision for the North

- Powering Northern Ontario is an important part of both Hydro One's history and our future. We have a proven track record of powering communities; we have been doing this for more than 100 years.
- We are part of these communities – our local teams and workforce based in Thunder Bay, Nipigon, Marathon and Algoma bring their best to your communities every day.
- The Lake Superior Link (LSL) is a critical next step in our long-standing presence in your communities to meet the current and future electricity needs of northern Ontario's homes and businesses.
- Along with the LSL, we are in the planning stages for a new transmission line between Thunder Bay and Dryden.

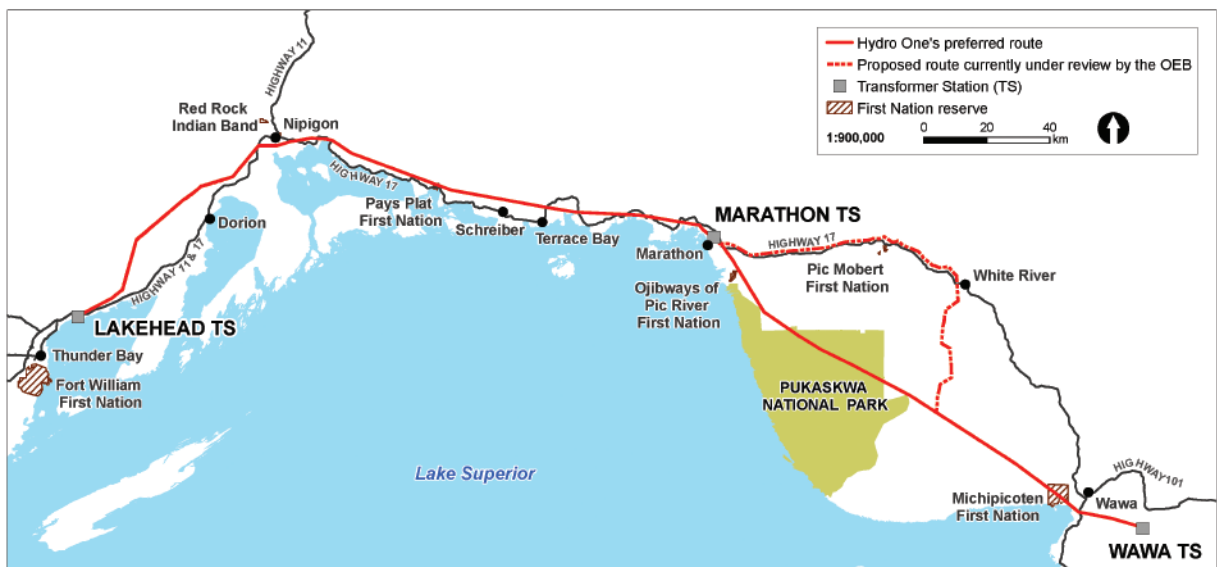


# Hydro One's route advantages

Hydro One's proposal is the **most cost-effective solution** to deliver the required power supply to northwestern Ontario while also **minimizing the environmental footprint**.

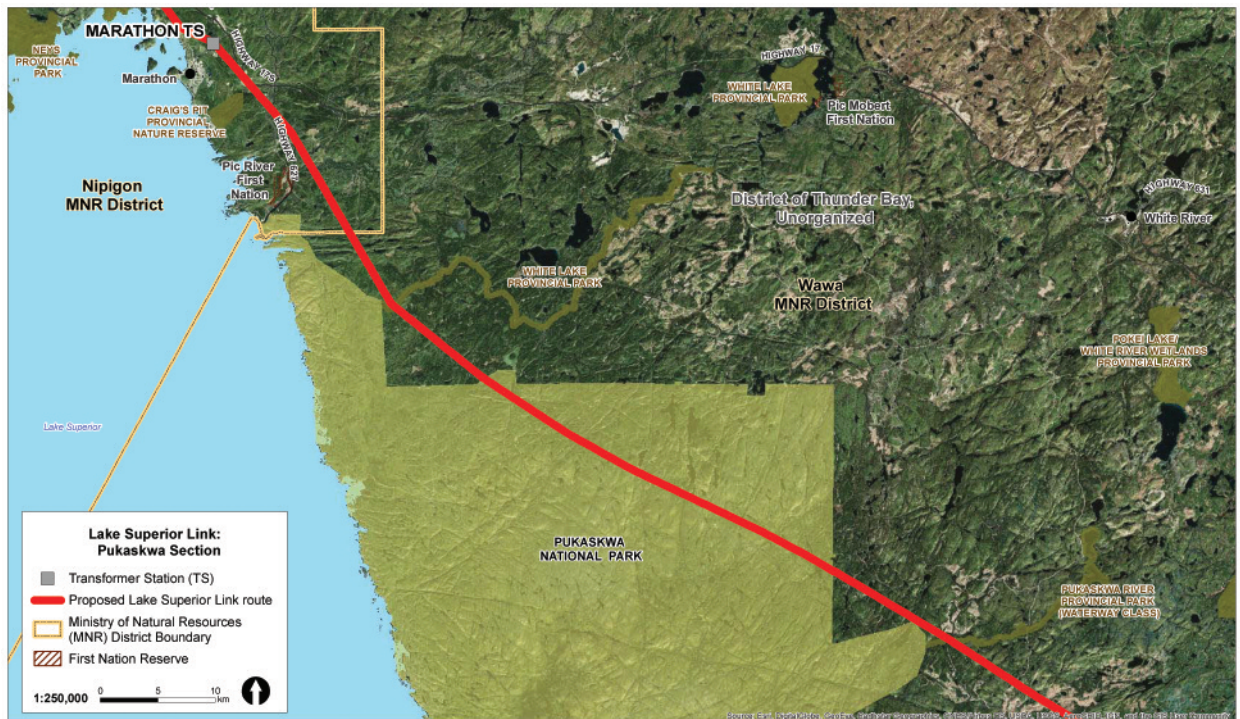
When compared to the currently proposed new East-West Tie line:

- **Hydro One's route is approximately 50 km shorter overall.**
  - Hydro One has the unique ability to be able to modify existing infrastructure through Pukaskwa National Park, significantly reducing the length of the overall transmission line and reducing future impact on the Park.
- **Hydro One's route would use approximately 50% less land.**
  - Hydro One will not be cutting new corridor or access routes through Pukaskwa National Park.
  - For the majority of the transmission line, Hydro One is proposing a narrower corridor (ranging from approximately 37 to 46 metres wide.)



## Pukaskwa National Park

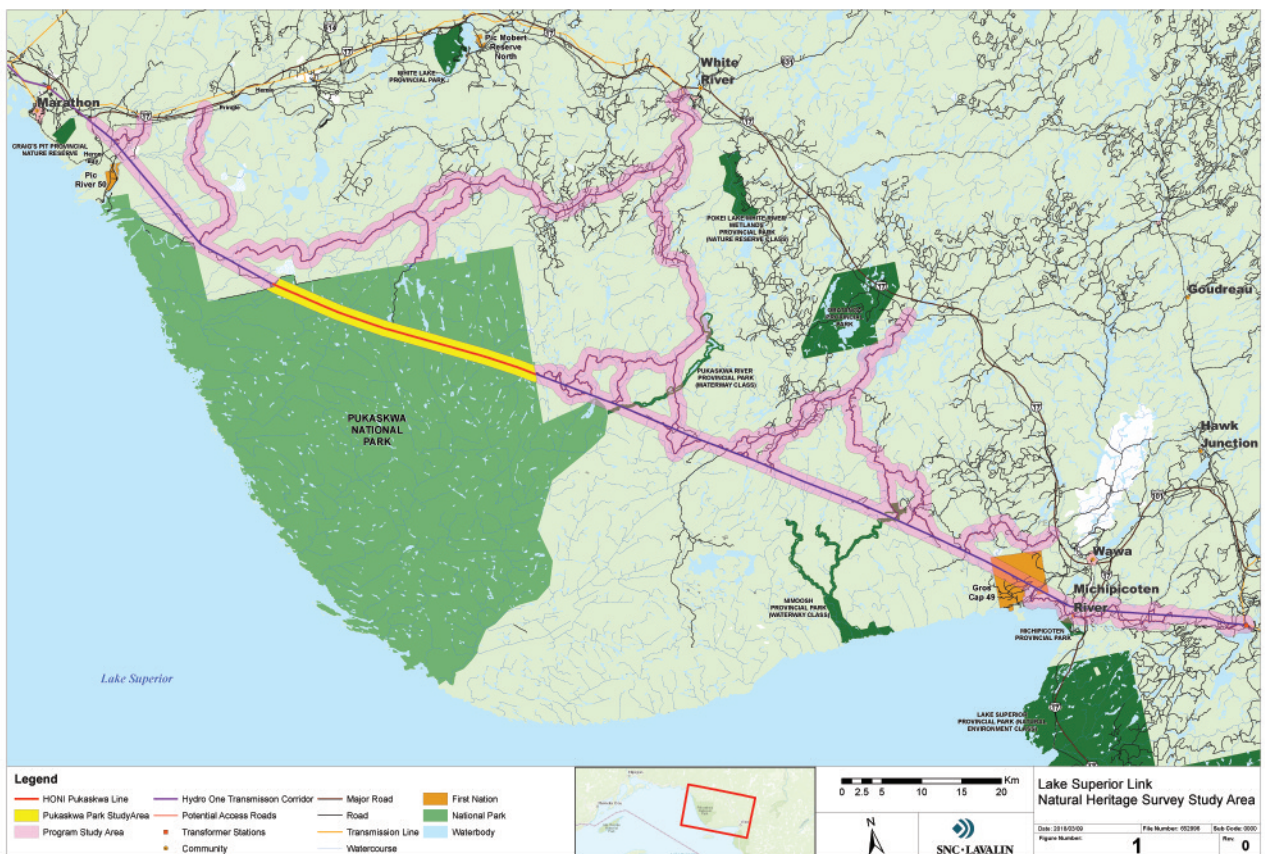
- Hydro One has the **unique ability** to follow its existing route through the Park, as opposed to going around it, eliminating the need to cut a new corridor through relatively undisturbed lands.
- For the 35 km route through the Park, Hydro One plans to take advantage of the existing infrastructure to avoid any further widening of the corridor.



## Pukaskwa National Park

Hydro One is currently working closely with Park officials while undertaking a range of environmental studies through Pukaskwa National Park to supplement the existing Environmental Assessment, including:

- Visual assessment
- Terrestrial wildlife field program
- Aquatic habitat field program
- Archaeology
- Vegetation classification surveys
- Species at Risk



## What if Hydro One's proposed corridor is on my property?

- A Hydro One Real Estate Coordinator will work with each property owner along the proposed corridor throughout the project.
- Hydro One has developed a project-specific Land Acquisition Compensation Principles ("LACP") document which will guide these property owners through the land acquisition process.
- The LACP is based on Hydro One's past land acquisition experience in major transmission projects.
- Hydro One will require early access to the proposed corridor to obtain relevant project information.  
Early access activities include:
  - Environmental and engineering studies
  - Legal surveys and property appraisals
  - Woodlot evaluations

## Working with local communities

- **We want to hear from you** as we explore community investment opportunities and partnerships that will benefit the project areas. We want to ensure that our project delivers tangible benefits to local communities.
- Once engaged on the project, Hydro One will explore and discuss various benefits for Indigenous communities including but not limited to capacity building to participate in the engagement process, procurement and sub-contracting opportunities, job training, employment and equity participation.







# Thank You

for joining us today!

## **Your input is important to us.**

Please share your feedback with our team and complete a comment form before you go.

To provide comments or to be added to the project contact list, please call or email:

**Stephanie Hodson**

**t: 1-877-345-6799**

**e: [Community.Relations@HydroOne.com](mailto:Community.Relations@HydroOne.com)**

For the most up-to-date project information and project updates can you also visit our project website:

**[www.HydroOne.com/LakeSuperiorLink](http://www.HydroOne.com/LakeSuperiorLink)**