

LAKE SUPERIOR LINK
TRANSMISSION PROJECT

hydro one



Welcome

to our Community Information Centre

Lake Superior Link Project

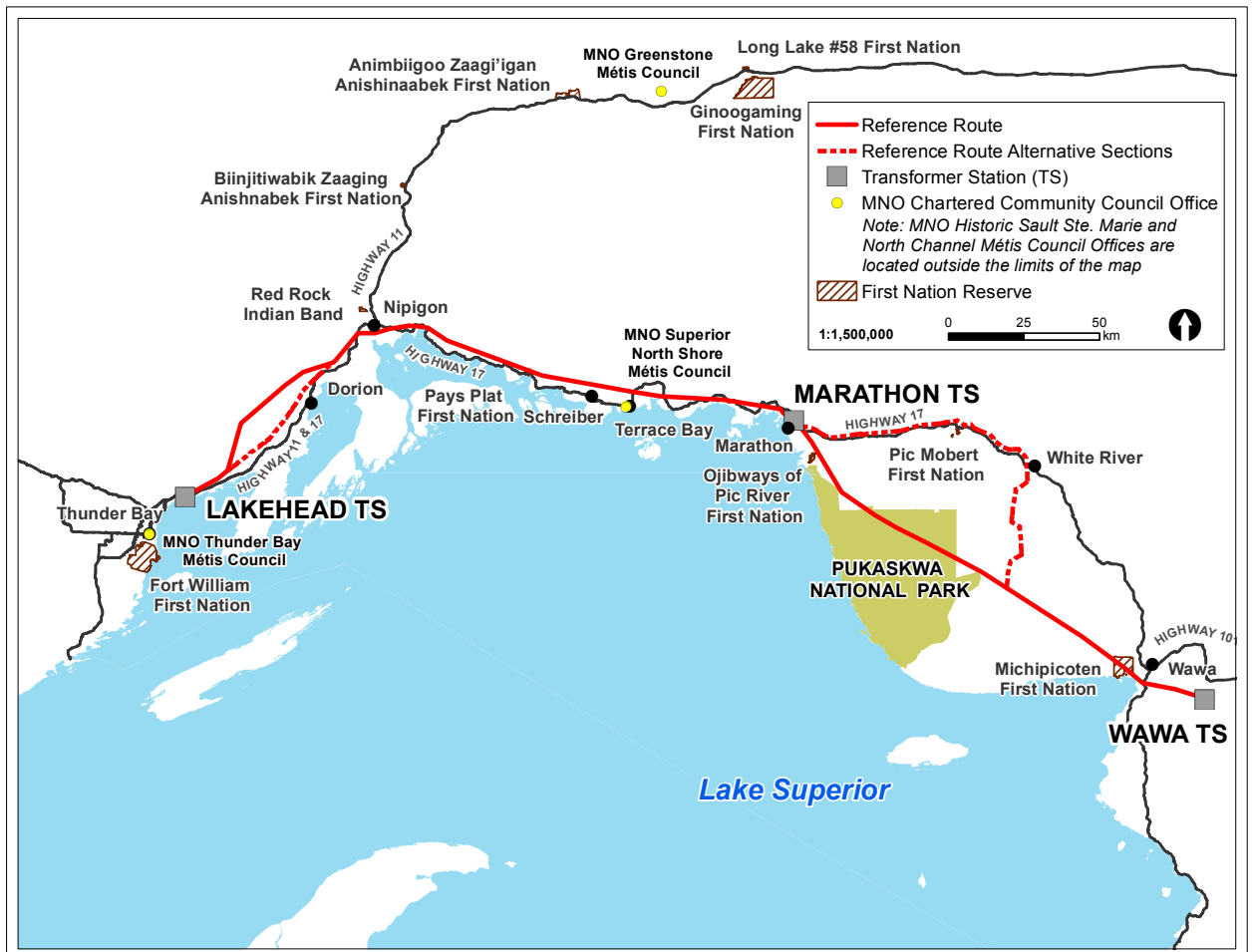
Today's Community Information Centre

We are here today to:

- Provide updates on Hydro One's proposed Lake Superior Link Project
- Discuss details of the Individual Environmental Assessment and answer questions
- Share results from completed environmental studies and field work
- Discuss plans for construction and obtain feedback on our proposal
- Provide updates on the approval process and project timelines

What is the Lake Superior Link?

The Lake Superior Link project is an approximately 400 kilometre, double-circuit 230 kilovolt transmission line which would primarily be built on, or adjacent to, Hydro One's existing East-West Tie transmission corridor between Lakehead Transformer Station (TS) in the Municipality of Shuniah, outside of Thunder Bay, and Wawa TS, just east of Wawa.



The Hydro One advantage

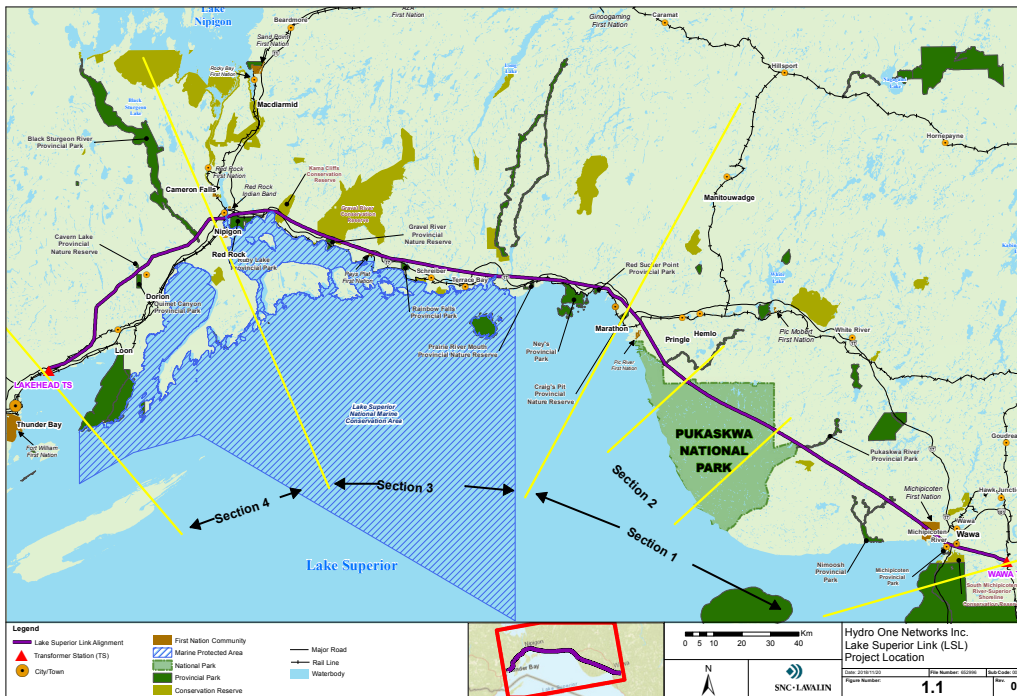
- The Lake Superior Link brings needed electricity infrastructure to northwestern Ontario with cost savings of more than \$100 million compared to the other proposal
- Hydro One's proposal is the most cost-effective solution while also minimizing the environmental footprint
- Our reference route would use approximately 50% less land than the other proposal
 - Hydro One has the unique advantage of utilizing the existing transmission corridor through Pukaskwa National Park
- Our project will cost \$3 million less in operating costs, a savings of tens of millions of dollars over the next 20 years

Project Background

- Hydro One and SNC-Lavalin formed a partnership to jointly design and construct the Lake Superior Link transmission line
- On February 15, 2018 Hydro One filed a *Section 92 Leave to Construct* application with the OEB for a new transmission line we call “The Lake Superior Link”
- Hydro One developed and consulted on a Terms of Reference (ToR) which was submitted to the Ministry of Environment, Conservation and Parks (MECP) in September 2018
 - Hydro One is commencing the Environmental Assessment before the ToR is approved by the MECP

Project Plan

- Construction is planned to begin in fall 2019 and be completed by the end of 2021
- The construction will be divided into 4 major sections and executed in parallel



- Construction will involve the following:
 - Establishing worker camps, laydown and storage yards and fly yards along the project route
 - Clearing, foundation installation, tower assembly, tower erection and stringing
 - In some areas, relocation and replacement of several structures carrying the existing 115 kilovolt (T1M) circuit.

Evaluation of Alternative Routes

- The assessment of route options will focus on evaluating the preferred route against the alternative route sections
- The assessment will be completed through a desktop analysis utilizing environmental, socio-economic and technical criteria
- Hydro One will adopt similar environmental criteria and indicators to those previously developed by others to ensure consistency with the evaluation
- Examples of the indicators used in the assessment include, but are not limited to:

Environmental	Socio-Economic	Technical
Area of mapped potential significant wildlife habitat within the proposed ROW (ha)	Area of First Nation reserves within the proposed ROW (ha)	Overall length of proposed ROW (km)
Area of wetlands within the ROW (ha)	Number of archaeological sites within the proposed ROW	Number of roads crossed
Area of mapped waterbodies crossed by the ROW (ha)	Number of potential property removals or potential severances of properties. Number of potentially affected properties	Number of rail lines crossed
Areas of migratory bird flyways, feeding habitat and resting areas within the ROW (ha)	Use and identification of traditionally important land uses by Indigenous communities	Terrain and soil stability, local design considerations
Area of mapped Provincially Significant Areas of Natural and Scientific Interest (Earth Science and Life Science) within the ROW (ha)	Number of trails crossed by the proposed ROWA	Land costs, construction capital cost, operations and maintenance cost

Opportunities

- The Lake Superior Link project activities and its associated support services will require on-site labour throughout the project
- It is expected that the peak resourcing will be approximately 400 people during construction
- Hydro One and our partners are committed to developing the resources and hiring from within the local markets as much as possible
- Training and skills development is being planned leading up to construction

Environmental Field Studies

- The majority of this route has been assessed during the EA completed by the other proponent
- Hydro One field studies have focused on verifying data from the completed EA and in areas where our route differs from the route studied in the completed EA
- All studies will be documented in the Hydro One EA report

Ongoing environmental studies in areas along the project route include:

- Archaeological Assessment
- Air Quality Assessment
- Cultural Heritage Assessment Report
- Greenhouse Gases Assessment
- Noise Assessment
- Visual Assessment

Approvals

- Ontario Energy Board (OEB) *Section 92 Leave to Construct* approval
- **Provincial Individual Environmental Assessment (EA)**
 - An approved EA identifies the environmental effects and stipulates the mitigation necessary to complete the project
- **Federal Detailed Impact Analysis (DIA)** for the portion of the line that would go through Pukaskwa National Park.
 - The DIA is a tool for Parks Canada to determine the likelihood of the project work taking place in Pukaskwa National Park that would result in significant adverse environmental effects
- If granted Leave to Construct, Hydro One intends to apply to the MECP for a **Declaration Order**
 - This would enable the project to be initiated in a more timely manner
 - Hydro One will work with Indigenous communities, municipalities and interested individuals in the development of the Declaration Order

Project Approval Timelines

Fall 2018

Issue Notice of Commencement of EA

Submit Draft DIA Terms of Reference (ToR)

Receive approval on EA ToR

Winter 2019

Complete DIA ToR

Submit Declaration Order

Spring 2019

Draft EA complete and available for review

Fall 2019

Receive approval of Declaration Order

Complete DIA

Receive approval of EA

Consultation and environmental studies will continue throughout the approvals process.

Indigenous Communities

- The role of Indigenous consultation is of paramount importance to Hydro One
- Hydro One is working closely with First Nation and Métis communities
- Input and participation from Indigenous community partners includes:
 - Capacity funding agreements
 - Community meetings
 - Participation in field studies
 - Traditional Knowledge data collection and integration
- Hydro One has hosted many community sessions with Indigenous communities and will continue to work closely throughout the planning and execution of the project.

Public Consultation Consultation

Hydro One is committed to open and transparent consultation on the Lake Superior Link with Indigenous communities and the public

- 20 CICs have been hosted along the project route since February 2018
- There are ongoing opportunities for the public to provide input into the EA
- There will be opportunity for the public to provide comment on the Declaration Order
- Hydro One will continue working closely with municipalities and will host pre-construction CICs in the fall of 2019



Thank you
for joining us today!

Your input is important to us.

Please share your feedback with our team and complete a comment form before you go.

To provide comments or to be added to the project contact list, please call or email:

1-877-345-6799

Community.Relations@HydroOne.com

For the most up-to-date information and updates can you also visit our project website:

HydroOne.com/LakeSuperiorLink