

PROJECT CONSTRUCTION

The Lake Superior Link project is an approximately 400 kilometre, double-circuit 230 kilovolt transmission line which would primarily be built on, or adjacent to, Hydro One's existing East-West Tie transmission corridor between Lakehead Transformer Station (TS) in the Municipality of Shuniah, outside of Thunder Bay, and Wawa TS, just east of Wawa.

Pending regulatory and environmental approvals, construction on the proposed Lake Superior Link project is planned to begin in the fall of 2019.

Project components during construction

The construction of the new transmission line involves coordination of people, materials, equipment and other necessary resources.

Access roads

During construction Hydro One will require access to the right of way to build and install each tower.

- To gain access, Hydro One will build access roads and trails. The majority of access is expected to be temporary, however, some may be made permanent to allow for access of the right of way for future routine inspections and maintenance.
- Access will be approximately 8 meters wide, with possible clearing of up to 12 meters in areas where drainage ditches are necessary.
- Hydro One will work to limit disruption to the environment by using existing roads and trails where possible.
- Helicopters will be utilized to transport materials and personnel to limit the number of access roads required. Helicopters will be the sole method of construction access in Pukaskwa National Park.
- All applicable approvals will be obtained from property owners and regulators.

Storage, fly and laydown yards

There will be a maximum of 6 storage yards and approximately 26 fly yards required to receive and distribute materials and equipment needed for construction of the transmission line.

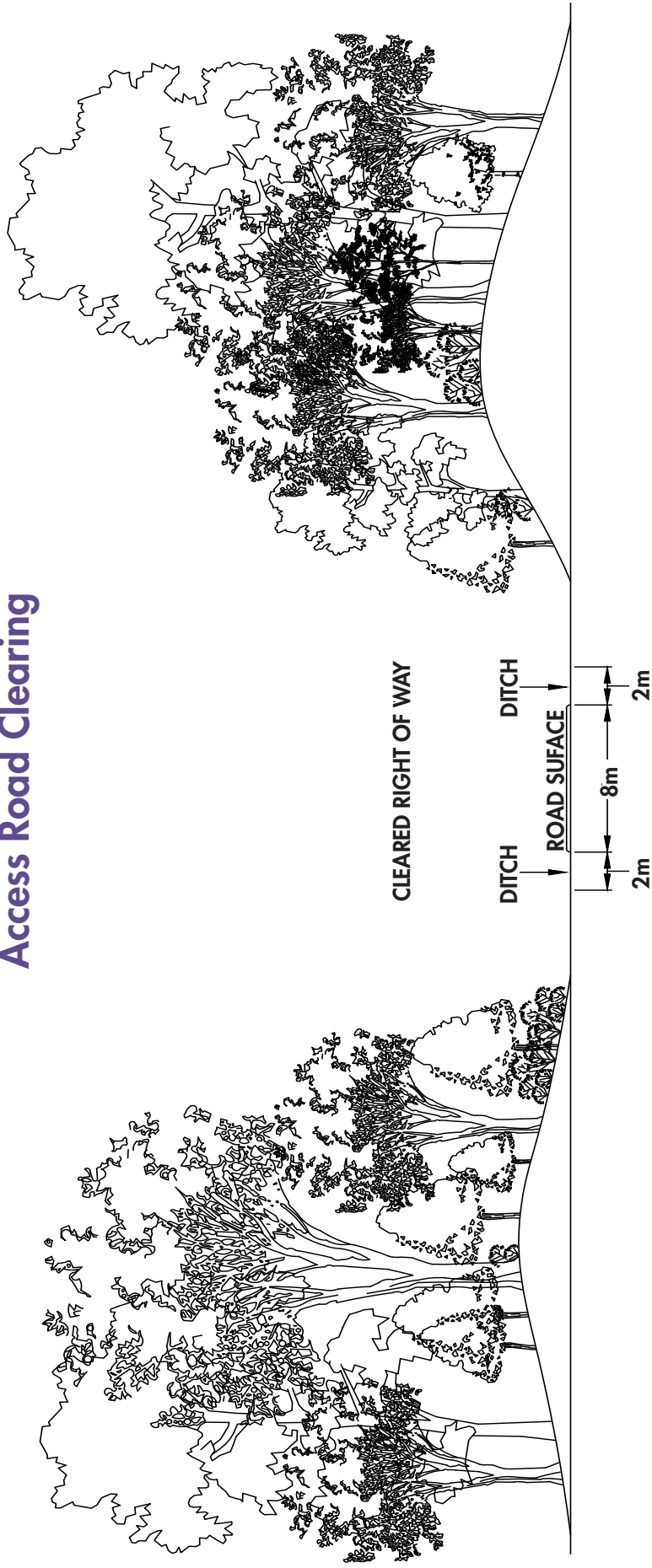
- The storage and fly yards will vary by location but are expected to be nominally 8 hectares in size.

Construction camps

Temporary construction camps and offices will be established during construction. Camps will provide accommodation for crews.

- Temporary construction camps are planned to be located in close proximity to municipalities within the Project area.
- Each construction camp is expected to require an area of approximately 8 hectares.
- To maximize the use of space Hydro One typically plans construction offices and camps to be located near or within the storage yards.
- Proposed base camps and yards will be located throughout the communities in Wawa, White River, Marathon, Nipigon and Thunder Bay to support construction.

Access Road Clearing



FOR MORE INFORMATION

To learn more about the proposed Lake Superior Link Project and Environmental Assessment visit www.HydroOne.com/LakeSuperiorLink