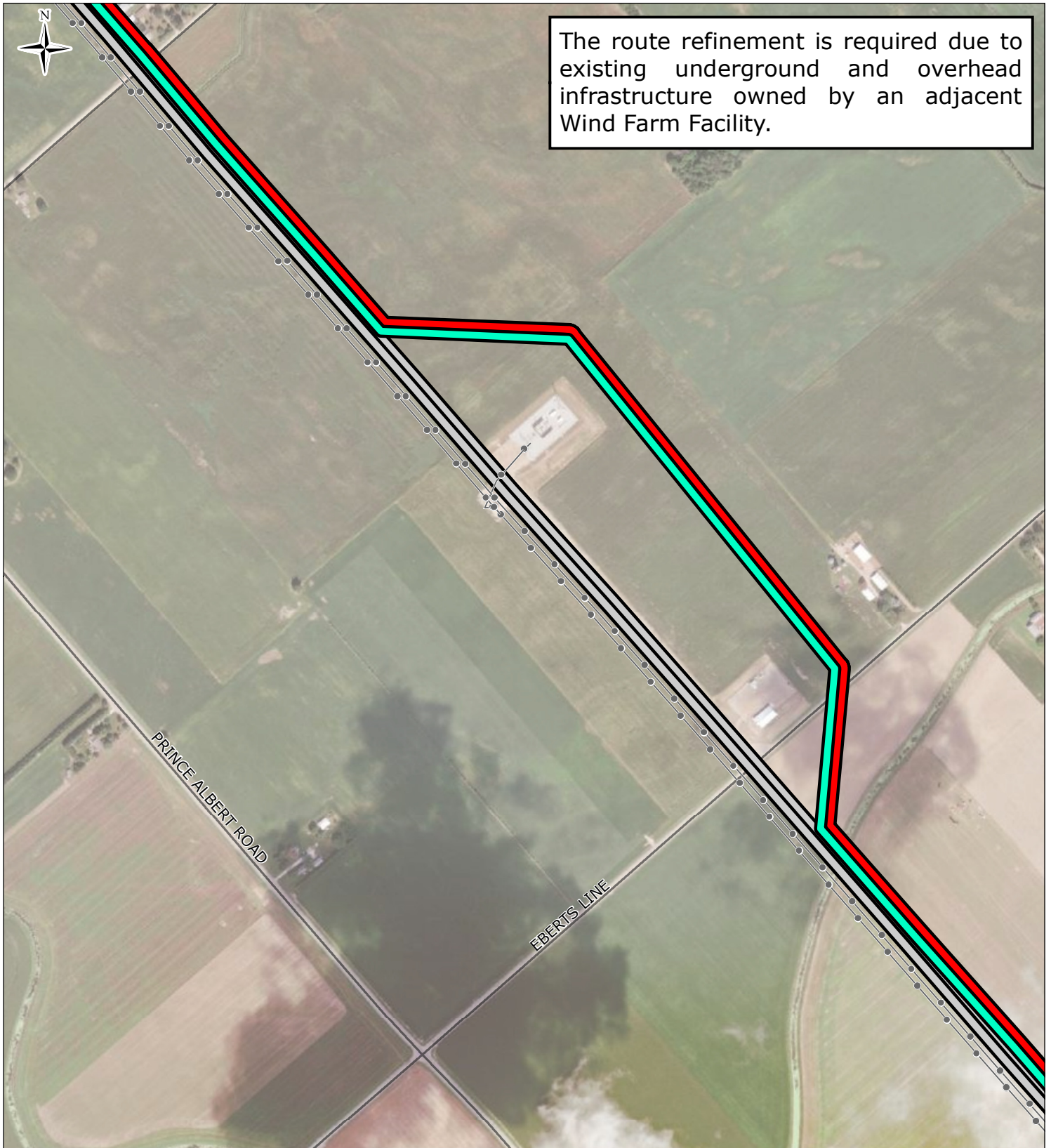


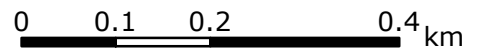


The route refinement is required due to existing underground and overhead infrastructure owned by an adjacent Wind Farm Facility.



Legend:

- Route 1 Refined Alignment
- Route 4 Refined Alignment
- Previous Alignments
- Existing 230 kv Transmission Line
- Road



St. Clair Transmission Line
Wind Farm Facilities, Eberts Line
- Changes to Alternatives 1 and 4

NOTES
 1. Coordinate System: NAD 1983 CSRS UTM Zone 17N.
 2. Cadastral boundaries are for informational purposes only and should not be considered suitable for legal, engineering, or surveying purposes.
 3. Topographic/landcover features obtained from CanVec v12.0 dataset, Natural Resources Canada Earth and Sciences Sector Centre for Topographic Information; and, Land Information Ontario (LIO) Warehouse Open Data (<https://geohub.lio.gov.on.ca/>), Ontario Ministry of Natural Resources and Forestry (OMNRF) Download Date : 2021-02-04

DISCLAIMER
 This drawing was prepared for the exclusive use of Hydro One Networks Inc. (the "Client"). Unless otherwise agreed in writing by SNC-Lavalin Inc./Dillon Consulting Ltd., SNC-Lavalin Inc./Dillon Consulting Ltd. does not accept and disclaims any and all liability or responsibility arising from any use of or reliance on this drawing by any third party or any modification or misuse of this drawing by the Client. This drawing is confidential and all intellectual property rights embodied or referenced in this drawing remain the property of such parties, as determined by the applicable services contract or contracts between SNC-Lavalin Inc./Dillon Consulting Ltd. and the Client.

Figure Number:		Sheet 1 of 1		REV: PA	
Client:	Hydro One Networks Inc.	Project Number:	684567	Date:	2022-10-18
DSC				DRN	CHK
TS = Transformer Station and SS = Switching Station				AD	APP