

# Hydro One invites you to a Public Information Centre

## Supply to Essex County – Class Environmental Assessment Project

*Hydro One Networks (Hydro One) invites you to an open house to learn more about its plans to upgrade its electricity transmission facilities in Essex County.*

### **Investing in electricity supply infrastructure to meet future needs**

Hydro One owns and operates the high-voltage transmission system that supplies Ontario's major customers and local distributing companies. Hydro One is initiating a Class Environmental Assessment (EA) to determine the preferred option for reinforcing the transmission system that supplies Essex County and Windsor to ensure an adequate and reliable supply for the future. As a first step in this process, Hydro One's Supply to Essex County Class EA will focus on evaluating alternative options for meeting the needs of the eastern part of Essex County.

The need for investment in new and/or upgraded high-voltage electrical facilities in Windsor and Essex County has been confirmed by the Ontario Power Authority, the agency responsible for planning long-term electricity supply in Ontario, in consultation with local distribution companies and Hydro One.

### **Alternatives under consideration**

As part of the Class EA, Hydro One is seeking input on the following two alternative options:

#### Alternative 1:

- Construction of a new 230 kilovolt (kV) to 115 kV autotransformer station and associated 'tap' line in the Woodslee area in the Town of Lakeshore. The study area for identifying potential station sites is shown on the enclosed Alternative 1 map.
- Upgrading the existing 115 kV transmission circuits between the proposed station and Hydro One's Kingsville Transformer Station. This would involve replacing the existing conductor (wires) with higher capacity conductor and replacing the wood pole structures on the existing transmission right-of-way.

#### Alternative 2:

- Construction of a new 230 kilovolt (kV) to 27.6 kV transformer station north of Leamington.
- Construction of a new 230 kV transmission line on a new right-of-way to connect the proposed station to Hydro One's existing 230 kV transmission line which runs east-west, south of Hwy 401. The study areas for identifying potential station sites and potential routes for the new 230 kV transmission line are shown on the enclosed Alternative 2 map.
- Construction of a new 230 kV transmission line between Sandwich Junction and Hydro One's Lauzon Transformer Station in the Town of Tecumseh, as shown on the map. This new section of 230 kV line would be built within the existing Hydro One-owned right-of-way.

*continued on reverse*

# Supply to Essex County – Class Environmental Assessment Project

## Project Approval Requirements

The proposed Supply to Essex County project is subject to provincial *Environmental Assessment Act* approval in accordance with the Class Environmental Assessment for Minor Transmission Facilities. The project is also subject to “Leave to Construct” approval from the Ontario Energy Board, under Section 92 of the *Ontario Energy Board Act*.

Public consultation and participation is a key part of both the Class EA and the Ontario Energy Board review processes for this project. Your input at all stages of the project is factored into our decision-making. It contributes to Hydro One’s understanding of local issues and concerns associated with a proposed undertaking and helps us recommend the best ways to plan and construct new facilities.

## Public Information Centres

Please visit one of our upcoming Public Information Centres, listed below, to learn more about this project. Members of Hydro One’s project team and representatives from the Ontario Power Authority will be on hand to discuss the need for new facilities and the project alternatives with you.

### Wed. April 16

4:00 – 8:00 p.m.

Millen Community Centre  
88 South Middle Road  
Woodslee

### Thurs. April 17

4:00 – 8:00 p.m.

Royal Canadian Legion, Br. 84  
14 Orange Street  
Leamington

### Tues. April 22

4:00 – 8:00 p.m.

Tecumseh Arena  
12021 McNorton Street  
Tecumseh

A second series of Public Information Centres will be held later this spring after Hydro One has conducted an analysis of the alternatives based on technical, environmental and socio-economic considerations and input received from the public and community stakeholders. At that time, Hydro One will present its preferred alternative and seek public input on its recommendation.

## For More Information

If you have questions, or wish to be added to the project mailing list, please contact:

Carrie-Lynn Ognibene

Hydro One Community Relations

Tel: 1-877-345-6799

Email: [Community.Relations@HydroOne.com](mailto:Community.Relations@HydroOne.com)

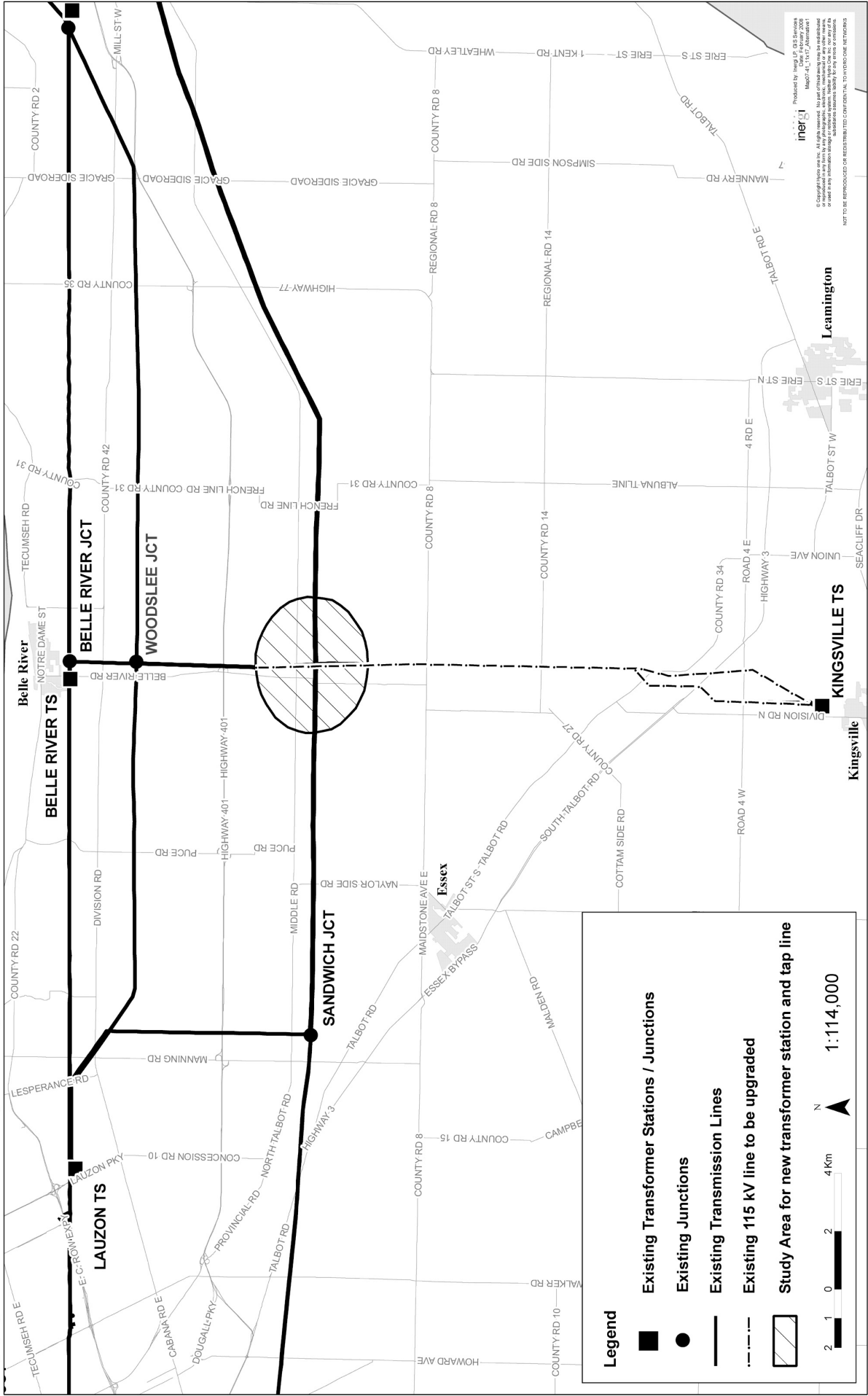
Website: [www.HydroOneNetworks.com/newprojects](http://www.HydroOneNetworks.com/newprojects)  
(look under Supply to Essex County)

Additional information is also available on the Ontario Power Authority’s website at:  
[www.powerauthority.on.ca/WindsorEssex](http://www.powerauthority.on.ca/WindsorEssex)

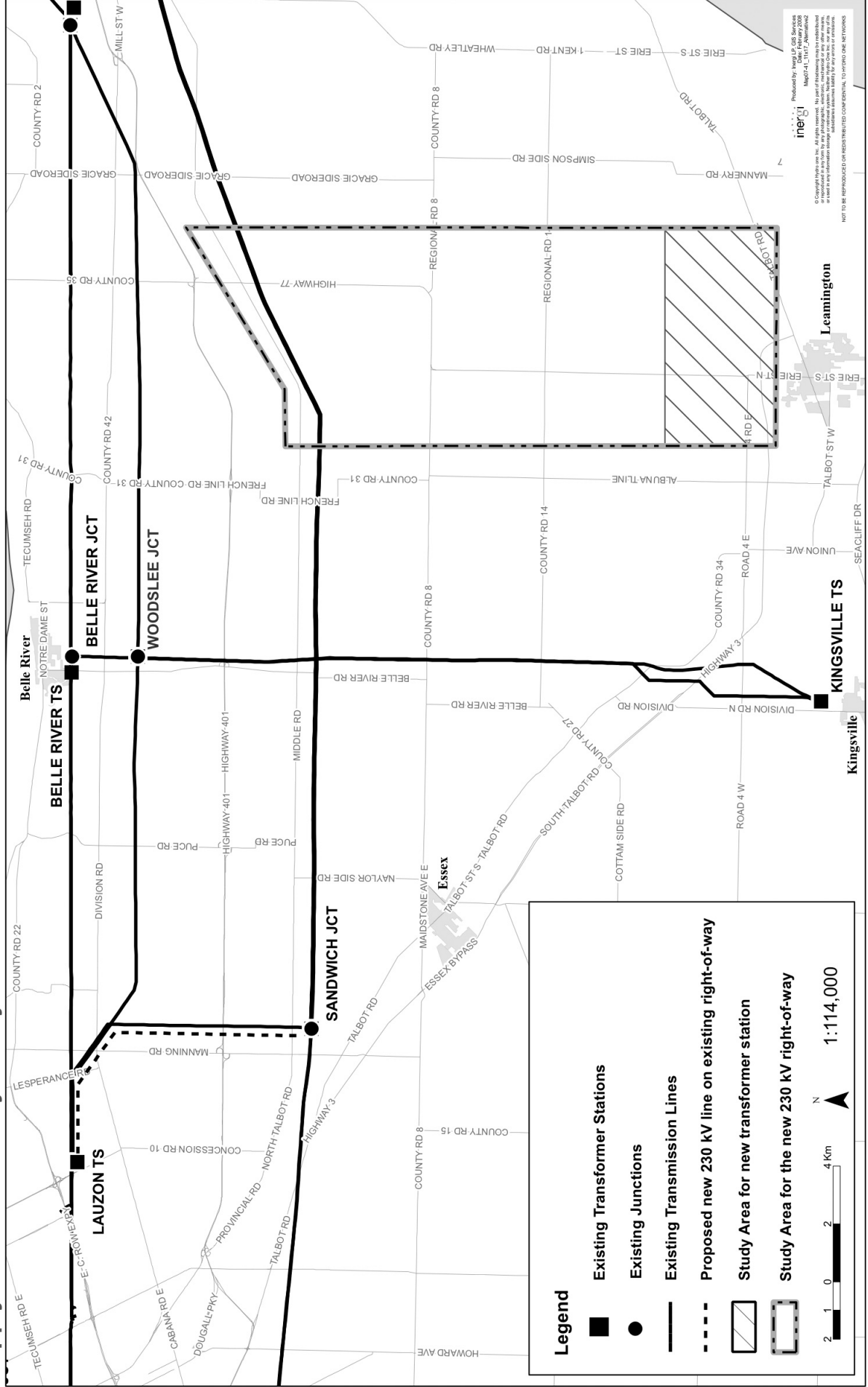


Partners in Powerful Communities

# Supply to Essex County: Study Area for Alternative 1



# Supply to Essex County: Study Area for Alternative 2



Produced by HydroGIS Services  
 MapGis 1.008 - February 2008  
 HydroGis Inc.  
 © Copyright HydroGis Inc. All rights reserved. No part of this document may be reproduced or transmitted in any form or by any means, electronic, mechanical, photocopying, recording, or by any information storage and retrieval system, without the prior written permission of HydroGis Inc. HydroGis Inc. assumes no liability for any errors or omissions.  
 NOT TO BE REPRODUCED OR REPRESENTED AS ESSENTIAL TO OTHER NETWORKS