

THE PROPOSED PROJECT

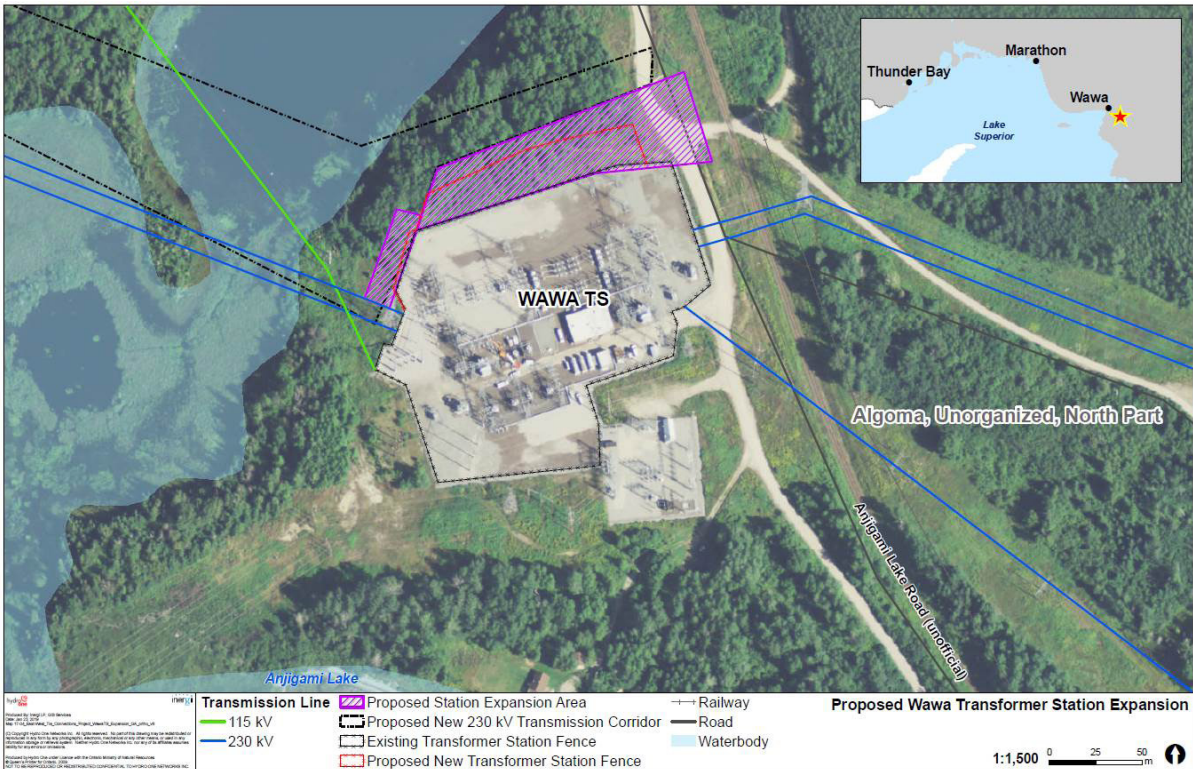
This project is to facilitate the connection of the East-West Tie transmission line that will run between Lakehead TS and Wawa TS. Wawa TS is located north of Anjigami Lake and southeast of municipality of Wawa.

The following station work would be required:

- Installation of new electrical equipment such as circuit breakers and disconnect switches.
- Reconfiguration of the existing electrical components to establish the connection of the new line.
- Installation of a new relay building to house electronic devices critical for safety, reliability and security of the power system.

PROPOSED AREA FOR STATION EXPANSION

To accommodate the work, Hydro One will need to expand the existing Wawa TS by approximately 0.6 hectares to the north and west on Hydro One property.



CLASS ENVIRONMENTAL ASSESSMENT

- The proposed station expansion is subject to the Class EA for Minor Transmission Facilities (Hydro One, 2016), in accordance with the *Ontario EA Act*.
- The Class EA is a streamlined planning process that has proven effective in ensuring that minor transmission projects that have a predictable range of effects have feasible environmental mitigation and/or protection measure in place.
- As part of the Class EA process, a draft Environmental Study Report (ESR) will be available for a public review and comment period once the assessment is complete.
- If no concerns are expressed during the review and comment period, a final ESR will be filed with the Ontario Ministry of the Environment, Conservation and Parks (MECP), and the project will proceed.
- If concerns are expressed during the review and comment period, Hydro One will make best efforts to resolve and incorporate them into the proposed project.
- If Hydro One cannot satisfy all of the concerns raised during the review period, a written request (Part II Order) asking for a higher level of assessment (Individual EA) can be submitted to the MECP.

ENVIRONMENTAL PLANNING PROCESS

The potential effects of the project will be identified during project planning and design, as part of the Class EA process, including potential effects related to:

- Business and residential property owners
- Planned land uses and existing infrastructure
- Natural environment resources (terrestrial and aquatic)
- Archaeological (heritage) resources
- Forestry and mineral resources
- Recreational resources and landscape appearance

ENVIRONMENTAL SURVEYS AND FINDINGS

Surveys conducted between June 27-28, 2017:

- Visual and acoustic surveys for bird species at risk (SAR) and endangered bat species.
- Surveys for amphibians, breeding birds, mammals, and other wildlife.
- Surveys for significant wildlife habitat such as turtle nesting areas, vernal pools, and raptor nests.
- Surveys for rare or otherwise significant plant species.

Findings:

- No bird SAR, bats, rare plant species were observed.
- Some traditional use plant species were observed.
- Common Milkweed and Monarch butterflies were observed in the open, disturbed area along northern station fence line.

*2019 surveys are on-going to supplement the data collected in 2017.



ENVIRONMENTAL MITIGATION MEASURES

Measures to reduce, prevent or mitigate potentially adverse environmental effects will include:

- Clearing of trees and vegetation to occur outside the breeding season for birds and bats, which is between April 15 and September 30.
- Vegetation removal to be minimized during construction to the extent feasible and a buffer to be maintained between the expansion area and the waterbody immediately to the north.
- Construction activities to be restricted to the designated work area.
- Construction equipment to be checked each morning in order to detect wildlife that may have sought shelter or rest in the equipment overnight.
- Mature seed pods of milkweed plants to be collected and seeds will be distributed post construction.



WORKING WITH INDIGENOUS COMMUNITIES

- Hydro One is committed to ongoing consultation with Indigenous communities throughout the project.
- Hydro One's Indigenous engagement process is designed to provide relevant project information to Indigenous communities proximate to the project in a timely manner.
- The process enables affected Indigenous communities to review, consider and raise issues, concerns and questions they may have with the project. The process also allows Hydro One to respond to any concerns or questions raised in a clear and transparent manner throughout the Class EA process.

ESTIMATED TIMELINE

**Project change notification to Public and Indigenous communities
– February 2019**

Environmental field surveys – May to June 2019

Community Information Centre – June 2019

**Notice of Completion and draft ESR review period review period
– Anticipated July 2019**

Final ESR filed with the MECP – Anticipated September 2019

**Start of construction, contingent on the outcome of the Class EA process
– Anticipated October 2019**

Project in-service – Anticipated October 2021

THANK YOU FOR JOINING US TODAY!

Your input is important to us.

Please share your feedback with our team and complete a comment form before you go.

To provide comments or to be added to the project contact list, please contact the Community Relations team at:

1.877.345.6799

Community.Relations@HydroOne.com



HydroOne.com



Customer Communications Centre

1-888-664-9376

Monday – Friday 7.30AM – 8PM EST



Power outages & emergencies

1-800-434-1235

24 hours/7 days



Hydro One Networks Inc.,

P.O. Box 5700, Markham, ON L3R 1C8

Follow us



@HydroOneOfficial



@HydroOne



@HydroOneOfficial