

FIG.1
SPLICE CONNECTION – TWO SAME SIZED CONDUCTORS

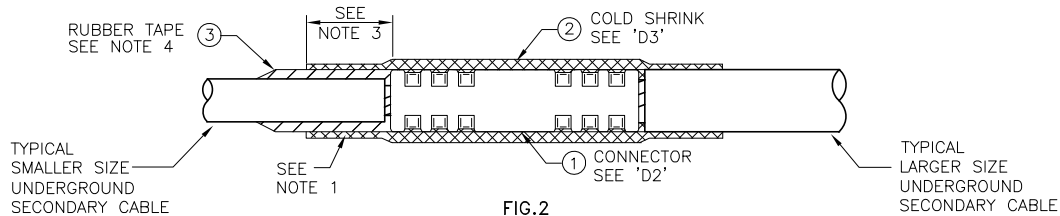


FIG.2
SPLICE CONNECTION – TWO DIFFERENT SIZED CONDUCTORS

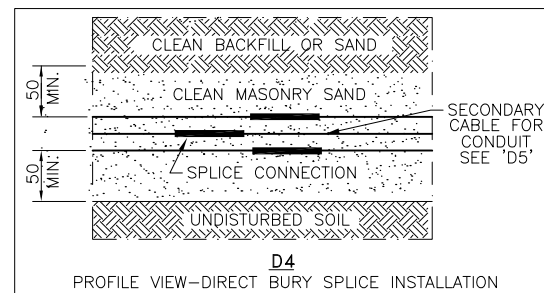
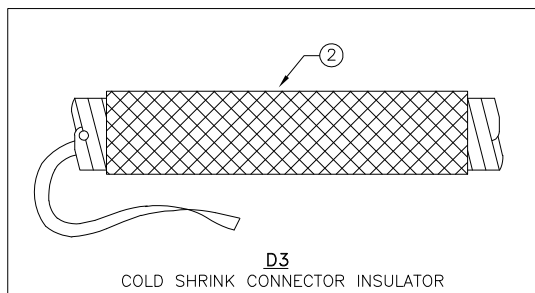
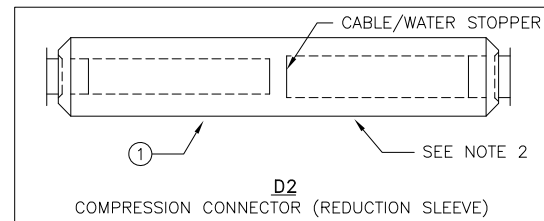
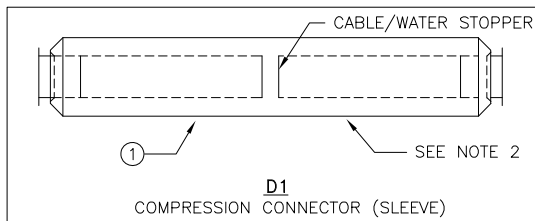


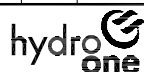
TABLE 1 – COMPRESSION CONNECTOR AND COLD SHRINK SELECTION CHART			
CONDUCTOR SIZE (KCMIL/AWG)	NON-TENSION UNDERGROUND SPLICE		
	CONNECTOR, SPLICE MM#	CSA DIE SIZE#	COLD SHRINK 600V INSULATOR MM#
500	30006397	30	30013875
250	30006455	26	30008346
4/0	30006456	24	30008346
3/0	30006695	24	30008346
3/0-1/0	30006817	26	30008346

NOTES:

1. INSERT THE COLD SHRINK INSULATOR COVER ON ONE OF THE CABLES BEFORE SPLICING. APPLY SHRINK PER FIG.1 OR FIG.2 AFTER CONNECTOR IS INSTALLED. ALL SURFACES MUST BE CLEAN AND DRY.
2. STRIP ONLY REQUIRED AMOUNT OF CABLE JACKET NEEDED TO INSTALL SLEEVE. FILE DOWN ANY SHARP EDGES SMOOTH AFTER COMPRESSION.
3. FINAL INSTALLATION SHALL HAVE AN EQUAL OVERLAP OF COLD SHRINK INSULATOR COVER OVER THE INSULATED PART OF THE SECONDARY CABLE ON EACH SIDE OF THE COMPRESSION CONNECTOR.
4. APPLY TAPE (PART #3) AROUND THE SMALLER SIZED CABLE TO INCREASE ITS DIAMETER TO BE EQUIVALENT TO THE LARGER SIZED CABLE AND ENSURE THE COLD SHRINK CREATES A TIGHT SEAL.
5. SPLICE SPLIT DUCT INSTALLATION NOT PREFERRED. ONLY ONE CONNECTION SHOWN FOR DRAWING CLARITY. DUCT MUST ALSO BE BACKFILLED WITH MASONRY SAND PER D4.

ALL DIMENSIONS IN MILLIMETRES
UNLESS OTHERWISE STATED

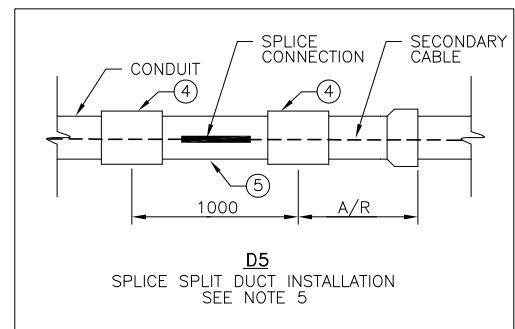
Rev No.	Date	Revision Particulars	dwn	ckd	des	app



Hydro One Networks Inc.

© Copyright Hydro One Networks Inc. All rights reserved. This drawing may not be reproduced or copied, in whole or in part, in any printed, mechanical, electronic, film, or other distribution and storage media or used in any information storage or retrieval system outside of Hydro One Networks Inc., without the written consent of Hydro One Networks Inc.

Information contained in this drawing is considered to be confidential. Recipients shall only use the drawing for its intended purpose and shall take necessary measures to prevent disclosure or transmittal to outside parties.



PARTS LIST

PART No.	MM No.	DESCRIPTION	QTY.
1	MM#	CONNECTOR, SPLICE, COMPRESSION, NON-TENSION, AL	A/R
2	SEE TABLE 1	COLD SHRINK INSULATOR	A/R
3	30008334	TAPE, SPLICING, RUBBER, SELF-AMALGAMATING	A/R
4	30003292	COUPLER, POLY, PUSH FIT	A/R
5	30031628	CONDUIT, 4", SPLIT DB2	A/R
MM# = REFER TO SECTION 16 ONLY			A/R = AS REQUIRED

Drawn By: PC	Checked By: M.MATEVSKI	Designed By: J.XU	Design Approved By: M.MATEVSKI
Scale: N.T.S.	Date: (yyyy/mm/dd) 2021/01/06	Pole ID:	

Title:
CONNECTORS:
NON-TENSION COMPRESSION SPLICE CONNECTOR WITH COLD SHRINK
FOR UNDERGROUND SECONDARY CABLE SPLICES, UP TO 600V

Drawing No. DU-03-219-0500	Rev. No. 00
-------------------------------	----------------