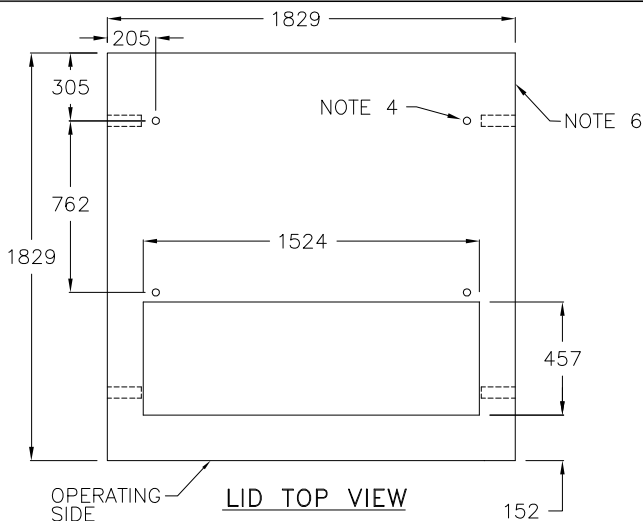
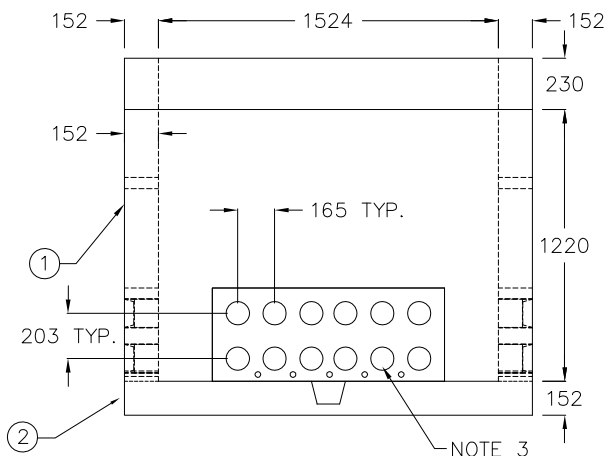


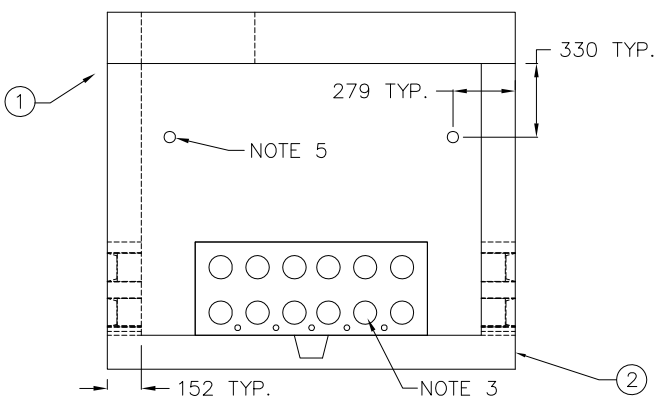
FOUNDATION TOP VIEW



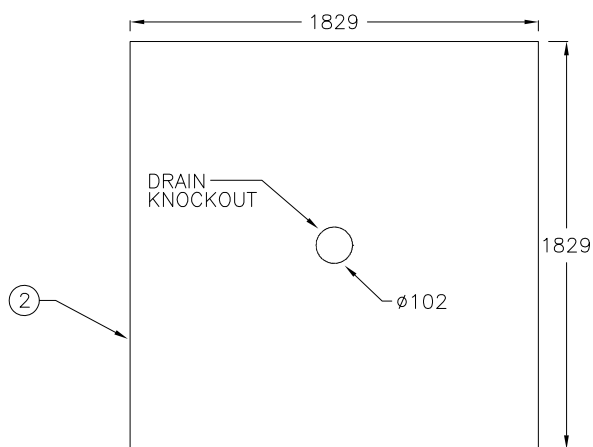
LID TOP VIEW



FOUNDATION FRONT VIEW



FOUNDATION RIGHT VIEW



CONCRETE BASE

NOTES:

1. ALL DIMENSIONS ARE IN mm UNLESS STATED OTHERWISE.
2. APPROXIMATE MASS OF FOUNDATION IS 3985 kg.
3. CABLE ENTRY OPENINGS: PVC SEALS FOR 100mm DUCTS.
4. 3/4" x 2" UNC GALV. THREADED INSERT TYP.
5. 50mm LIFTING HOLE OR SWIFT LIFT SYSTEM.
6. LID THICKNESS = 230mm, LID MASS = 1320 kg.
7. DUE TO THE WEIGHT OF THIS EQUIPMENT, THE BASE UNIT (PART#2) MUST BE USED IN ALL INSTALLATIONS, IRRESPECTIVE OF SOIL CLASS.

PARTS LIST			
PART No.	MM No.	DESCRIPTION	QTY.
1	30031408	CONCRETE FOUNDATION WITH LID (TWO PIECES) - FOR THREE PHASE TRANSFORMER (501-1000kVA)	A/R
2	30031407	CONCRETE BASE - FOR THREE PHASE TRANSFORMER	A/R
MM# = REFER TO SECTION 16 ONLY A/R = AS REQUIRED			

*	*	*	*
01	JULY 2014	UPDATED PARTS LIST	SO
Rev. No.	Issue Date	Revision	Dwn By
			Approved By
			Chk Date
© Copyright Hydro One Networks Inc. All rights reserved. This drawing may not be reproduced or copied, in whole or in part, in any printed, mechanical, electronic, film, or other distribution and storage media or used in any information storage or retrieval system outside of Hydro One Networks Inc., without the written consent of Hydro One Networks Inc. Information contained in this drawing is considered to be confidential. Recipients shall only use the drawing for its intended purpose and shall take necessary measures to prevent disclosure or transmittal to outside parties.			



Hydro One Networks Inc.

Drawn: S.00RT

Approved: *

Date: NOV.08,2011

TYPICAL CONCRETE FOUNDATION - THREE PHASE PAD-MOUNTED TRANSFORMER (501 - 1000kVA)

Dwg. No. DU-09-203

Rev. 01