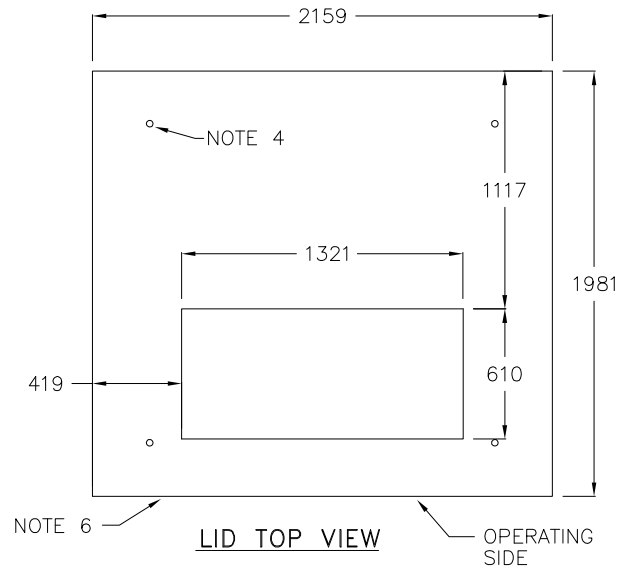
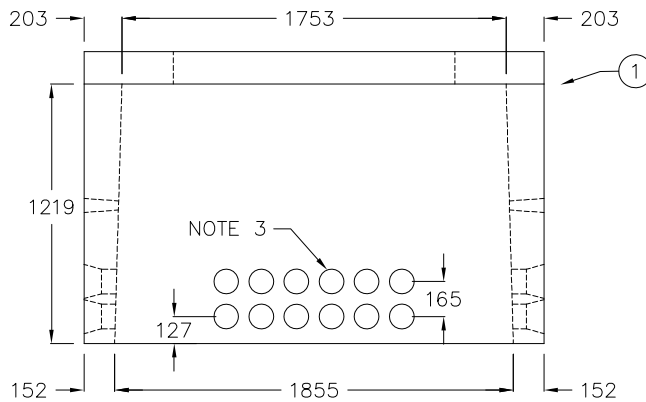


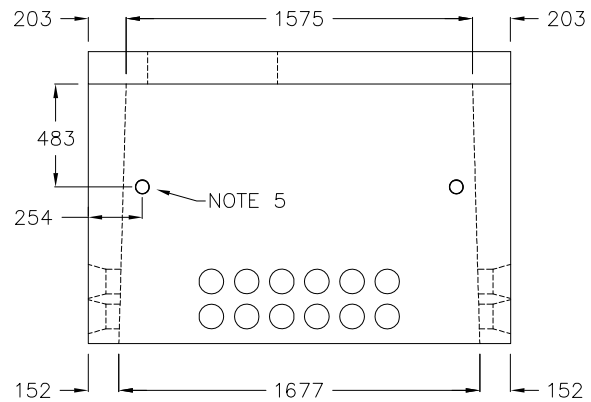
FOUNDATION TOP VIEW



LID TOP VIEW



FOUNDATION FRONT VIEW



FOUNDATION RIGHT VIEW

NOTES:

1. ALL DIMENSIONS ARE IN mm UNLESS STATED OTHERWISE.
2. APPROXIMATE MASS OF FOUNDATION IS 2950 kg.
3. CABLE ENTRY OPENINGS: PVC SEALS FOR 100mm DUCTS.
4. 1/2" x 2" UNC PLASTIC THREADED INSERT.
5. 50mm LIFTING HOLE OR SWIFT LIFT SYSTEM.
6. LID THICKNESS = 152mm, LID MASS = 1345 kg.

PARTS LIST

PART No.	MM No.	DESCRIPTION	QTY.
1	30031631	CONCRETE FOUNDATION WITH LID (TWO PIECES) - FOR THREE PHASE METERING UNIT	A/R
MM# = REFER TO SECTION 16 ONLY			A/R = AS REQUIRED

*	*	*	*	*
Rev. No.	Issue Date	Revision	Dwn By	Approved By
			Chk	Date
© Copyright Hydro One Networks Inc. All rights reserved. This drawing may not be reproduced or copied, in whole or in part, in any printed, mechanical, electronic, film, or other distribution and storage media or used in any information storage or retrieval system outside of Hydro One Networks Inc., without the written consent of Hydro One Networks Inc. Information contained in this drawing is considered to be confidential. Recipients shall only use the drawing for its intended purpose and shall take necessary measures to prevent disclosure or transmittal to outside parties.				



Hydro One Networks Inc.

Drawn: S.00RT

Approved: *

Date: JUN.19,2014

TYPICAL CONCRETE FOUNDATION - THREE PHASE METERING UNIT

Dwg. No. DU-09-503

Rev. 00