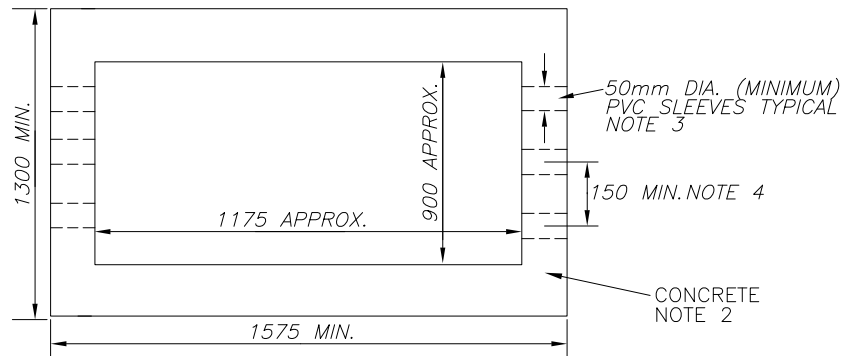


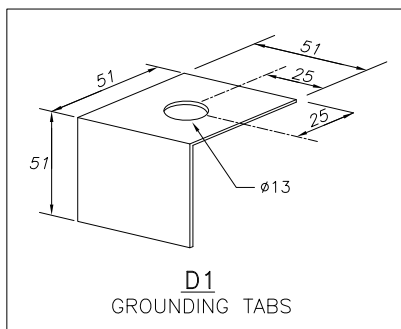
CONVERSION TABLE	
METRIC (mm)	IMPERIAL (APPROX)
6	1/4"
13	1/2"
19	3/4"
50	2"
102	4"
150	6"
200	8"
457	1'-6"
736	2'-5"
900	2'-11"
940	3'-1"
1093	3'-7"
1175	3'-10"
1219	4'-0"
1300	4'-3"
1372	4'-6"
1575	5'-2"



FIELD POURED CONCRETE LEVELING  
PAD FOR PADMOUNT TRANSFORMER

**NOTES:**

- ALL DIMENSIONS ARE IN mm UNLESS STATED OTHERWISE.
- CONCRETE 28 DAY STRENGTH TO BE 20MPa, MINIMUM HEIGHT TO BE 150mm. THICKNESS MAY VARY DUE TO TERRAIN.
- CABLE SLEEVES TO BE PVC DUCT CUT FLUSH WITH THE FACE OF THE CONCRETE PAD. UNUSED SLEEVES TO BE SEALED WITH PVC PLUGS OR CONCRETE.
- POSITION AND NUMBER OF PVC SLEEVES AS REQUIRED. 150mm MINIMUM SEPARATION.



**PARTS LIST**

PART No.	MM No.	DESCRIPTION	QTY.
1	30011214	ALUMINUM BASE FOR SINGLE PHASE PADMOUNT TRANSFORMER - 25-50kVA	A/R
MM# = REFER TO SECTION 16 ONLY A/R = AS REQUIRED			

*	*	*	*	*	*		
Rev. No.	Issue Date	Revision	Dwn	By	Approved	Drawn:	Date:
			Chk			S.00RT	JUN.16,2014
© Copyright Hydro One Networks Inc. All rights reserved. This drawing may not be reproduced or copied, in whole or in part, in any printed, mechanical, electronic, film, or other distribution and storage media or used in any information storage or retrieval system outside of Hydro One Networks Inc., without the written consent of Hydro One Networks Inc. Information contained in this drawing is considered to be confidential. Recipients shall only use the drawing for its intended purpose and shall take necessary measures to prevent disclosure or transmittal to outside parties.							ALUMINUM BASE 1 Ø LOW PROFILE CONVENTIONAL PAD-MOUNTED TRANSFORMER
Dwg. No.						DU-09-602	Rev. 00