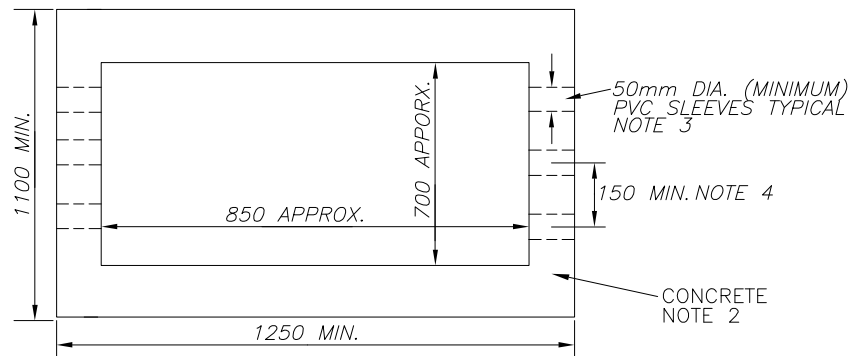
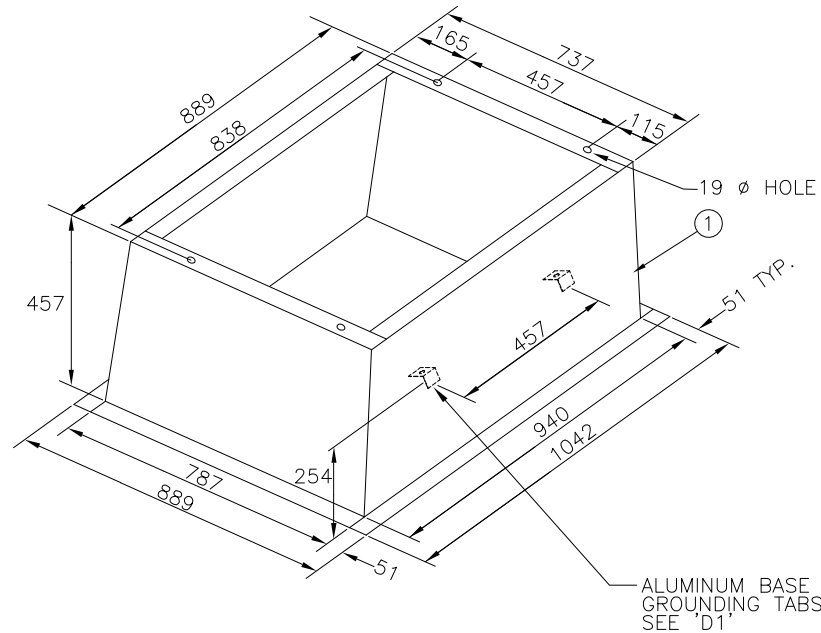
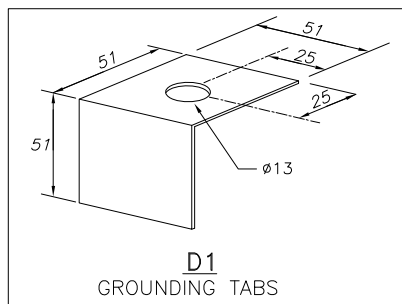


CONVERSION TABLE	
METRIC (mm)	IMPERIAL (APPROX)
6	1/4"
13	1/2"
19	3/4"
50	2"
115	4-1/2"
150	6"
165	6-1/2"
200	8"
254	10"
457	1'-6"
700	2'-3"
737	2'-5"
787	2'-7"
850	2'-9"
889	2'-11"
940	3'-1"
1042	3'-5"
1100	3'-7"
1250	4'-1"



FIELD POURED CONCRETE LEVELING PAD  
FOR COMPACT SINGLE PHASE KIOSK



#### NOTES:

- ALL DIMENSIONS ARE IN mm UNLESS STATED OTHERWISE.
- CONCRETE 28 DAY STRENGTH TO BE 20MPa. MINIMUM HEIGHT TO BE 150mm. THICKNESS MAY VARY DUE TO TERRAIN.
- CABLE SLEEVES TO BE PVC DUCT CUT FLUSH WITH THE FACE OF THE CONCRETE PAD. UNUSED SLEEVES TO BE SEALED WITH PVC PLUGS OR CONCRETE.
- POSITION AND NUMBER OF PVC SLEEVES AS REQUIRED. 150mm MINIMUM SEPARATION.

PARTS LIST			
PART No.	MM No.	DESCRIPTION	QTY.
1	30030442	ALUMINUM BASE - 1Ø COMPACT SWITCHING KIOSK	A/R
MM# = REFER TO SECTION 16 ONLY		A/R = AS REQUIRED	

*	*	*	*	*
Rev. No.	Issue Date	Revision	Dwn By	Approved By
			Chk	Date
© Copyright Hydro One Networks Inc. All rights reserved. This drawing may not be reproduced or copied, in whole or in part, in any printed, mechanical, electronic, film, or other distribution and storage media or used in any information storage or retrieval system outside of Hydro One Networks Inc., without the written consent of Hydro One Networks Inc. Information contained in this drawing is considered to be confidential. Recipients shall only use the drawing for its intended purpose and shall take necessary measures to prevent disclosure or transmittal to outside parties.				



Hydro One Networks Inc.

Drawn: S.00RT Approved: \* Date: JUN.19,2014

ALUMINUM BASE - COMPACT SWITCHING KIOSK - 1Ø

Dwg. No. DU-09-603

Rev. 00