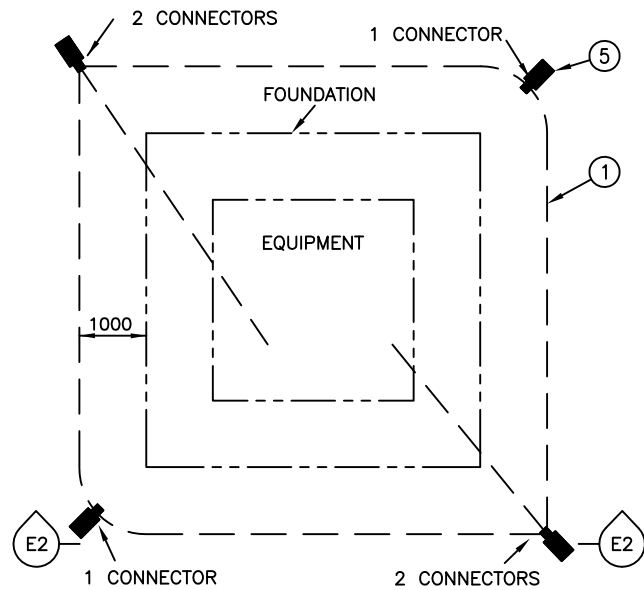
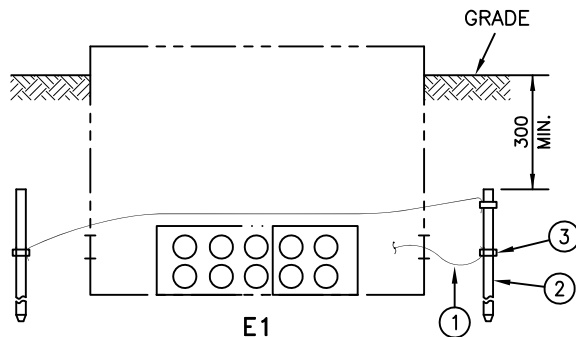


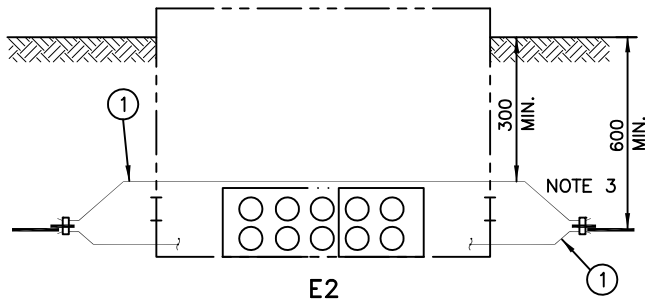
PLAN VIEW OF GROUND GRADIENT GRID



PLAN VIEW OF GROUND GRADIENT GRID



TYPICAL INSTALLATION - GROUND RODS



ALTERNATE INSTALLATION - GROUND PLATES

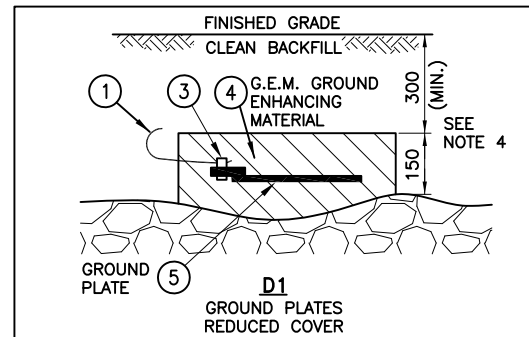
PARTS LIST			
PART No.	MM No.	DESCRIPTION	QTY.
1	30014488	BARE CONDUCTOR, COPPER, #4 AWG	A/R
2	30014142	ROD, GROUND, 19mm x 3m, GALV.	4
3	30006646	CONNECTOR, GRD. WEDGE, GROUND ROD TO #4 COPPER WIRE	6
4	30025402	GROUND ENHANCING MATERIAL (G.E.M.)	A/R
5	30025401	GROUND PLATE	4
MM# = REFER TO SECTION 16 ONLY / A/R = AS REQUIRED			

**REFERENCES:**

SECTION 1 - DEFINITIONS  
 SECTION 3C - CONSTRUCTION GUIDE  
 SECTION 16 - MATERIALS

**NOTES:**

1. ALL DIMENSIONS ARE IN MILLIMETRES UNLESS STATED OTHERWISE.
2. GAS PIPE LINES SHALL MAINTAIN MINIMUM 300mm (PREFERRED 600mm) SEPARATION FROM HYDRO ONE EQUIPMENT GROUND GRID.
3. GROUND RODS MAY BE SUBSTITUTED WITH GROUND PLATES ONLY IF GROUND RODS CANNOT BE DRIVEN DUE TO ROCKY GROUND CONDITIONS. MAINTAIN 600mm MINIMUM NATIVE SOIL COVER OVER PLATES AND 300mm OVER GROUND WIRE(S). PLATES INSTALLED AT REDUCED DEPTH MUST BE INSTALLED PER INSET 'D1'.
4. MECHANICAL PROTECTION (75mm 21 MPa CONCRETE) IS REQUIRED OVER PLATES AND GROUND WIRES FOR BURIAL DEPTHS LESS THAN 300mm.



					<div>hydroone</div> <div>Hydro One Networks Inc.</div>		
*	*	*	*	*	Drawn:	Approved:	Date:
	*	*		*	LS	*	NOV.26,2013
Rev. No.	Issue Date	Revision	Dwn	Approved	PAD-MOUNTED EQUIPMENT GROUNDING DETAILS - TYPICAL (CONCRETE FOUNDATION)		
				By			
				Chk Date			
© Copyright Hydro One Networks Inc. All rights reserved. This drawing may not be reproduced or copied, in whole or in part, in any printed, mechanical, electronic, film, or other distribution and storage media or used in any Information storage or retrieval system outside of Hydro One Networks Inc., without the written consent of Hydro One Networks Inc. Information contained in this drawing is considered to be confidential. Recipients shall only use the drawing for its intended purpose and shall take necessary measures to prevent disclosure or transmittal to outside parties.					Dwg. No.	DU-14-101	Rev. 00

© Copyright Hydro One Networks Inc. All rights reserved. This drawing may not be reproduced or copied, in whole or in part, in any printed, mechanical, electronic, film, or other distribution and storage media or used in any information storage or retrieval system outside of Hydro One Networks Inc., without the written consent of Hydro One Networks Inc.  
 Information contained in this drawing is considered to be confidential. Recipients shall only use the drawing for its intended purpose and shall take necessary measures to prevent disclosure or transmission to outside parties.