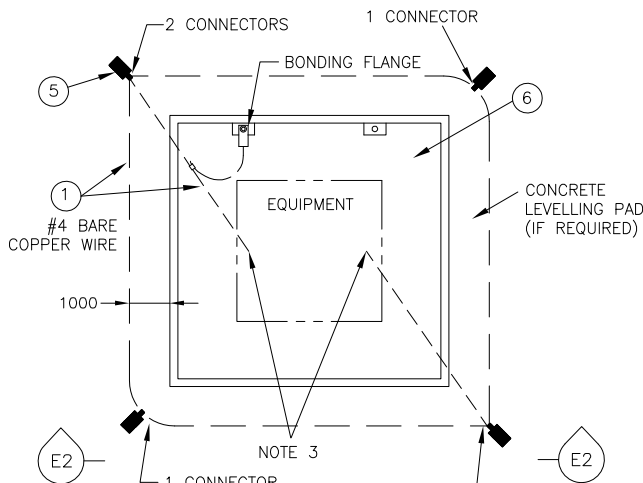
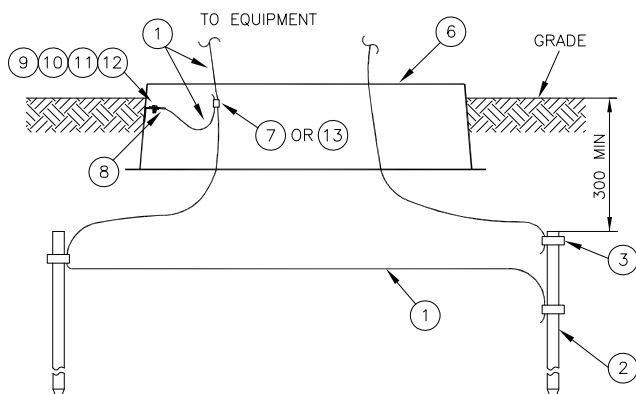


PLAN VIEW OF GROUND GRADIENT GRID

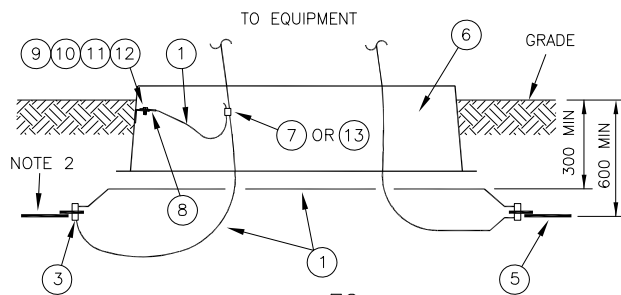


PLAN VIEW OF GROUND GRADIENT GRID



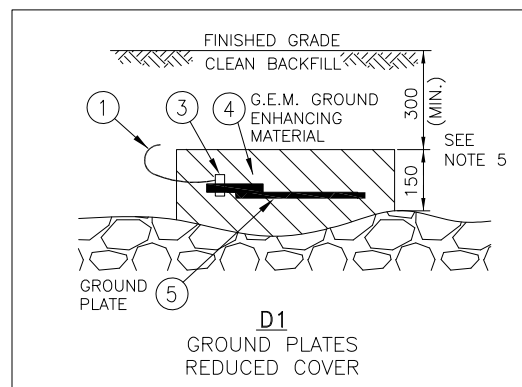
E1

TYPICAL INSTALLATION: GROUND RODS



E2

ALTERNATE INSTALLATION: GROUND PLATES

D1
GROUND PLATES
REDUCED COVER

PARTS LIST			
PART No.	MM No.	DESCRIPTION	QTY
1	30014480	BARE CONDUCTOR, COPPER, #4 AWG	A/R
2	30014142	ROD, GROUND, 3/4" x 10ft. GALVANIZED	A/R
3	30006646	CONNECTOR, GRD WEDGE, GROUND ROD/PLATE TO #4 COPPER WIRE	6
4	30025402	GROUND ENHANCING MATERIAL (G.E.M.)	A/R
5	30025401	GROUND PLATE	A/R
6	MM#	EQUIPMENT BASE, ALUMINUM	A/R
7	30007255	CONNECTOR, TAP WEDGE, 4AWG-4AWG	A/R
8	30006884	CONNECTOR, COMPRESSION, 1-HOLE, #4 CU	1
9	30001611	WASHER, SI-BR, LOCK, FOR 1/2" BOLT	1
10	30001184	BOLT, 1/2" DIA. 1-1/2" LG, SI-BR	1
11	30001499	NUT, HEX FOR 1/2" SI-BR BOLT	1
12	30001681	WASHER, FLAT, FOR 1/2" SI-BR BOLT	2
13	30006154	CONNECTOR, SPLIT BOLT, CU, 6-2AWG RUN & TAP	A/R
MM# = REFER TO SECTION 16 ONLY		A/R = AS REQUIRED	

REFERENCES:

SECTION 1 DEFINITIONS
SECTION 6C CONSTRUCTION GUIDE
SECTION 16 MATERIALS LIST

NOTES:

- ALL DIMENSIONS ARE IN mm UNLESS STATED OTHERWISE.
- GROUND RODS MAY BE SUBSTITUTED WITH GROUND PLATES ONLY IF GROUND RODS CANNOT BE DRIVEN DUE TO ROCKY GROUND CONDITIONS. MAINTAIN 600mm MINIMUM NATIVE SOIL COVER OVER PLATES AND 300mm OVER GROUND WIRE(S).
- LEAVE 2 m COIL OF #4 WIRE IN FOUNDATION FOR FINAL CONNECTION TO EQUIPMENT.
- PLATES INSTALLED WITH LESS THAN 600mm OF COVER MUST BE INSTALLED PER INSET 'D1'. EACH GROUND PLATE REQUIRES ONE BAG OF G.E.M.(MINIMUM). PLATE TO BE CENTRED WITHIN MIXTURE.
- MECHANICAL PROTECTION (75mm 21 MPa CONCRETE) IS REQUIRED OVER PLATES AND GROUND WIRES FOR BURIAL DEPTHS LESS THAN 300mm.

Rev. No.	Issue Date	Revision	Dwn	Approved By	Chk	Date
*	*	*	*	*	*	*
<div style="display: flex; justify-content: space-between; align-items: center;"> <div> <p>© Copyright Hydro One Networks Inc. All rights reserved. This drawing may not be reproduced or copied, in whole or in part, in any printed, mechanical, electronic, film, or other distribution and storage media or used in any information storage or retrieval system outside of Hydro One Networks Inc., without the written consent of Hydro One Networks Inc.</p> <p>Information contained in this drawing is considered to be confidential. Recipients shall only use the drawing for its intended purpose and shall take necessary measures to prevent disclosure or transmittal to outside parties.</p> </div> <div style="text-align: right;"> <p>Hydro One Networks Inc.</p> <p>Drawn: LS Approved: * Date: NOV.26,2013</p> <p>GROUND GRID DETAILS FOR EQUIPMENT INSTALLATION ON ALUMINUM BASES</p> <p>Dwg. No. DU-14-102 Rev. 00</p> </div> </div>						