

FIG.1
FRONT VIEW - TYPICAL
TRANSITION TO RISER CONDUIT

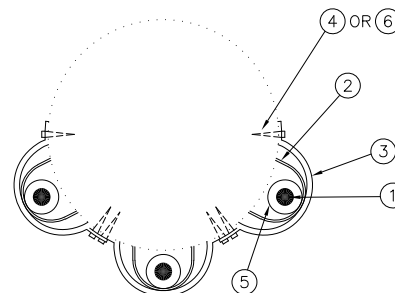


FIG.2
PLAN VIEW
ARRANGEMENT FOR 3
SEPARATE CABLE GUARDS
(SEE NOTE 5)

NOTES:

1. THE PVC CONDUIT IS THE CABLE'S MEANS OF ATTACHMENT TO THE POLE AND SHALL EXTEND UP TO THE CABLE'S 'TAKE-OFF' POINT. PVC CONDUIT TO EXTEND A MINIMUM OF 15cm ABOVE NEUTRAL IF PRESENT.
2. ONE LENGTH OF METAL FLARED GUARD SHALL BE INSTALLED AT THE BOTTOM AS SHOWN.
3. METAL GUARD DOES NOT REQUIRE GROUNDING WHEN INSTALLED OVER PVC CONDUIT AS SPECIFIED.
4. FOR ATTACHMENTS TO COMPOSITE POLES, USE PART #6.
5. WHEN MULTIPLE CABLE CONDUITS/GUARDS ARE REQUIRED, THEY SHOULD BE INSTALLED AS CLOSE AS PRACTICAL TO ONE ANOTHER TO FACILITATE CLIMBING OF THE POLE BY MINIMIZING OCCUPIED POLE SPACE.
6. 60cm MIN. IF FLEXIBLE CONDUIT IS USED FOR TRANSITION. REFER TO SECTION 5 TRANSITION DRAWINGS FOR OTHER TRANSITION OPTIONS (E.G. REDUCED COVER, ROCK MOUNT, ETC.) BASED ON AVAILABLE COVER.

PARTS LIST

PART No.	MM No.	DESCRIPTION	QTY.
1	MM#	CONDUCTOR, PRIMARY	A/R
2	30023782	GUARD, CABLE, FLARED, 60mm x 2.4m	A/R
3	30000744	STRAP, CABLE GUARD, 60mm, AL. OR GALV.	A/R
4	30001989	BOLT, LAG, HEX., 1/4", 2-1/2" LONG, GALV.	A/R
5	30007542	CONDUIT, 2" X 10", BELL END, SCHEDULE 40, PVC	A/R
6	MM#	SCREW, SELF TAP, HWH, 3" LONG, FOR COMPOSITE POLE	A/R
7	MM#	ELBOW, 4", 90°, RIGID PVC, SCHEDULE 40	A/R
8	30000923	STRAP, CONDUIT, 100mm, AL. OR GALV.	A/R
9	30007583	CONDUIT, 4" X 10", BELL END, SCHEDULE 40, PVC	A/R
10	30031918	COUPLER KIT, 4", FLEX TO 4" RIGID	A/R
11	30031917	CONDUIT, FLEX, 4"	A/R
MM# = REFER TO SECTION 16 ONLY		A/R = AS REQUIRED	

ALL DIMENSIONS IN CENTIMETRES
UNLESS OTHERWISE STATED

01	SEPT 2023	ORIGINAL DU-08-302.1-0500-R3 IS NOW SUPERSEDED BY THIS NEW DRAWING/REVISION. CHANGED TO SECTION 5. "CONTINUOUS CONDUIT SYSTEM" ADDED TO THE DRAWING TITLE & UPDATED LAYOUT AND ADDED APPLICABLE PARTS. CHANGED TO NEW DWG. & NUMBERING FORMAT. DIRECT BURIED CONTENT WAS MOVED TO NEW SECTION 15 - DU15-142-0500 R01.	PC	MM	MM	MM
Rev No.	Date	Revision Particulars	dwn	ckd	des	app



Hydro One Networks Inc.

© Copyright Hydro One Networks Inc. All rights reserved. This drawing may not be reproduced or copied, in whole or in part, in any printed, mechanical, electronic, film, or other distribution and storage media or used in any information storage or retrieval system outside of Hydro One Networks Inc., without the written consent of Hydro One Networks Inc.

Information contained in this drawing is considered to be confidential. Recipients shall only use the drawing for its intended purpose and shall take necessary measures to prevent disclosure or transmittal to outside parties.

Drawn By: PC Checked By: M.MATEVSKI Designed By: M.MATEVSKI Design Approved By: M.MATEVSKI P.Eng.

Scale: N.T.S. Date: (yyyy/mm/dd) 2020/03/19 Pole ID:

Title: CABLE CONDUIT/GUARD APPLICATION, FOR CONTINUOUS CONDUIT SYSTEM, WOOD/COMPOSITE POLES

PRIMARY CABLES 2/0 AND SMALLER, UP TO 28kV

Drawing No. DU5-302-0500 Rev. No. 01