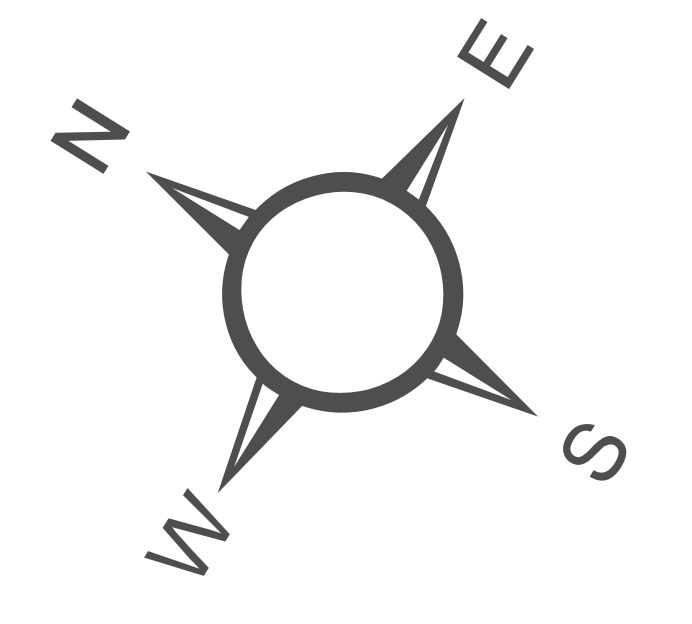




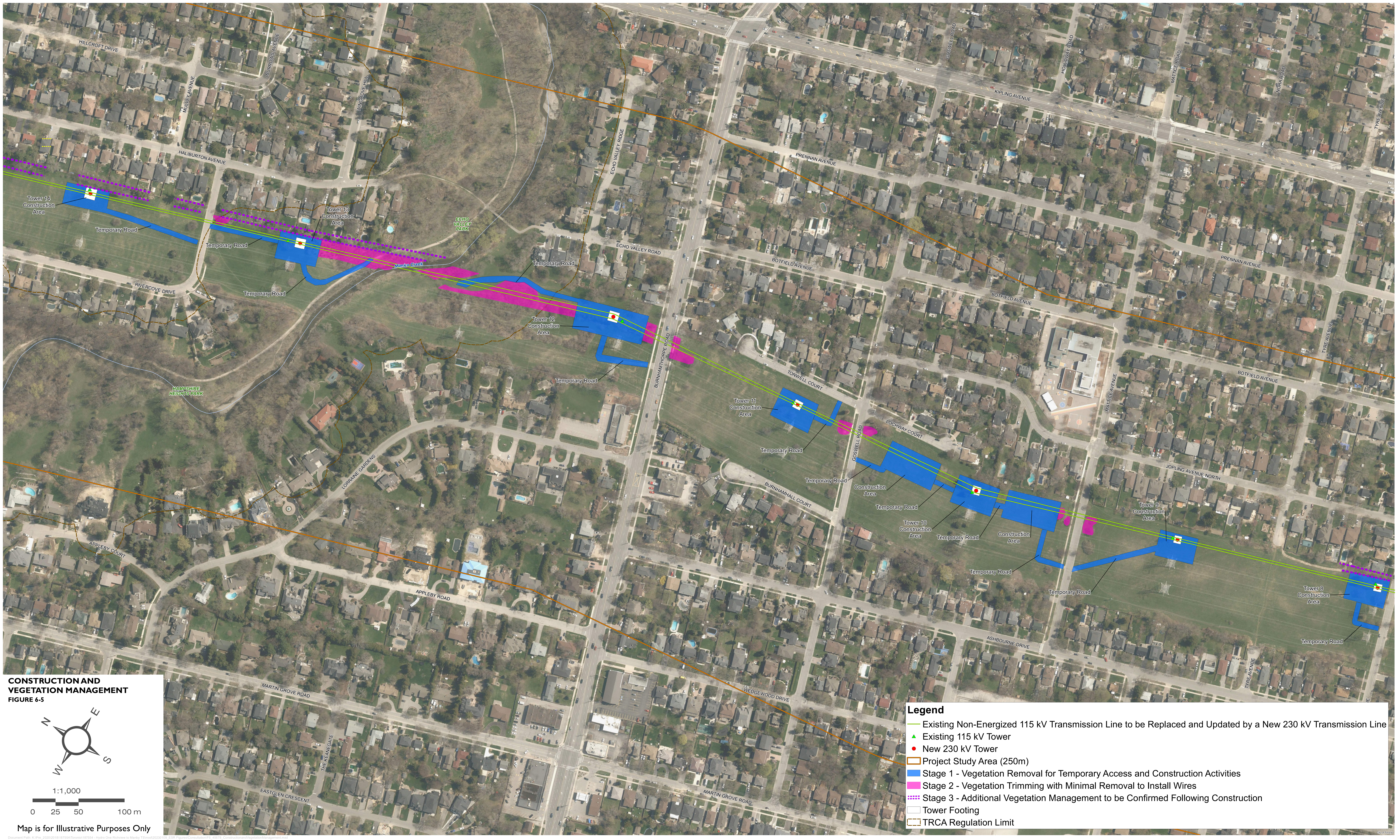
CONSTRUCTION AND VEGETATION MANAGEMENT
FIGURE 6-4



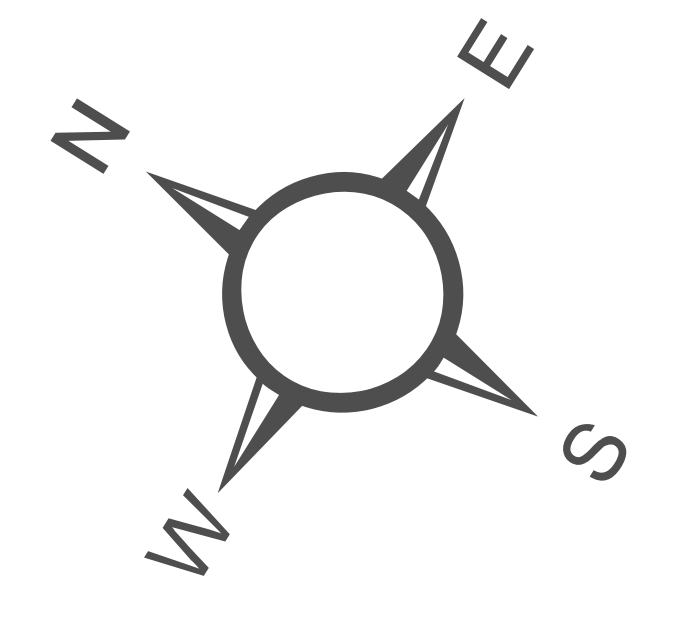
1:1,000
 0 25 50 100 m

Map is for Illustrative Purposes Only

- Legend**
- Existing Non-Energized 115 kV Transmission Line to be Replaced and Updated by a New 230 kV Transmission Line
 - ▲ Existing 115 kV Tower
 - New 230 kV Tower
 - Project Study Area (250m)
 - Stage 1 - Vegetation Removal for Temporary Access and Construction Activities
 - Stage 2 - Vegetation Trimming with Minimal Removal to Install Wires
 - Stage 3 - Additional Vegetation Management to be Confirmed Following Construction
 - Tower Footing
 - Own Track



CONSTRUCTION AND VEGETATION MANAGEMENT
FIGURE 6-5



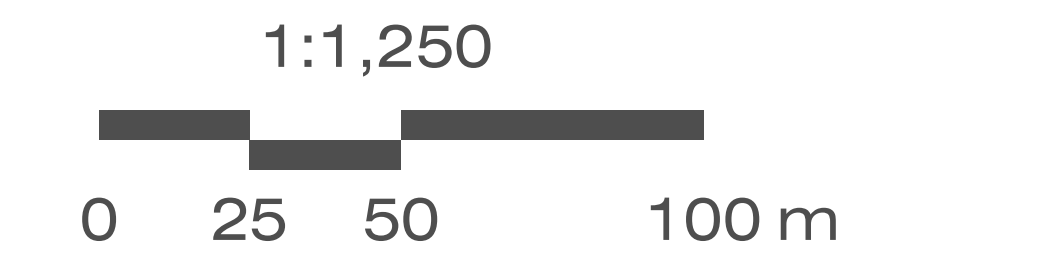
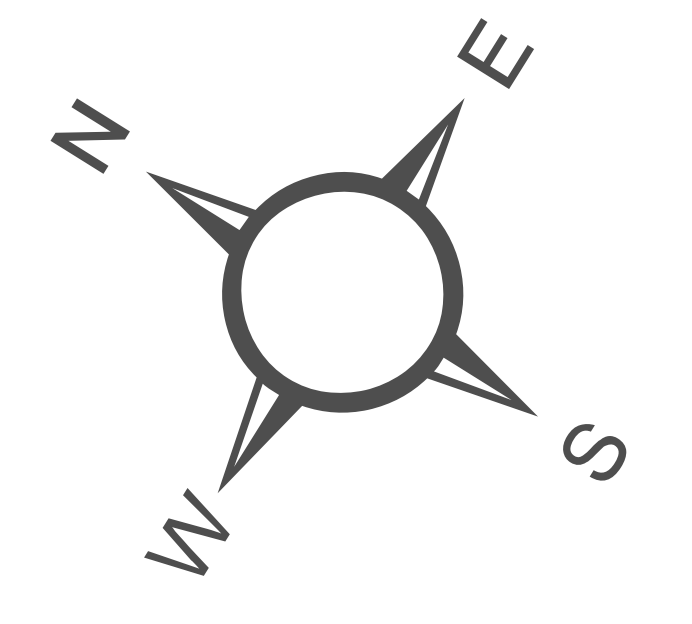
1:1,000
 0 25 50 100 m

Map is for Illustrative Purposes Only

- Legend**
- Existing Non-Energized 115 kV Transmission Line to be Replaced and Updated by a New 230 kV Transmission Line
 - Existing 115 kV Tower
 - New 230 kV Tower
 - Project Study Area (250m)
 - Stage 1 - Vegetation Removal for Temporary Access and Construction Activities
 - Stage 2 - Vegetation Trimming with Minimal Removal to Install Wires
 - Stage 3 - Additional Vegetation Management to be Confirmed Following Construction
 - Tower Footing
 - TRCA Regulation Limit



CONSTRUCTION AND VEGETATION MANAGEMENT
FIGURE 6-6

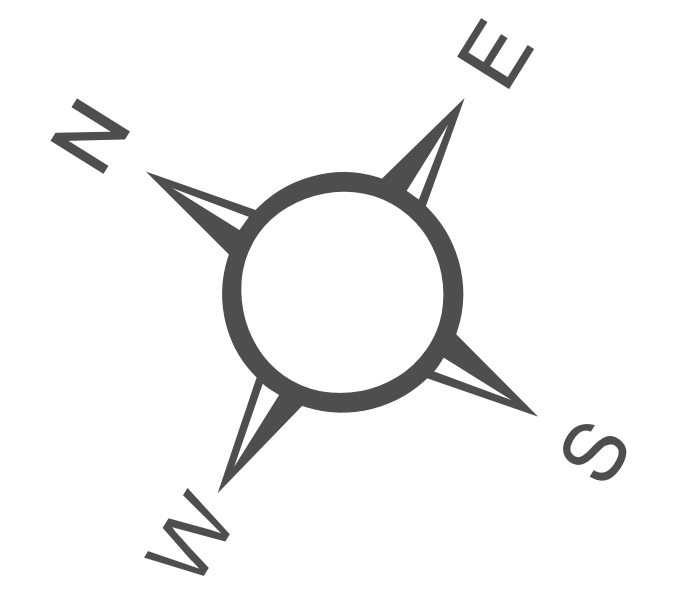


Map is for Illustrative Purposes Only

- Legend**
- Existing Non-Energized 115 kV Transmission Line to be Replaced and Updated by a New 230 kV Transmission Line
 - ▲ Existing 115 kV Tower
 - New 230 kV Tower
 - Project Study Area (250m)
 - Stage 1 - Vegetation Removal for Temporary Access and Construction Activities
 - Stage 2 - Vegetation Trimming with Minimal Removal to Install Wires
 - Stage 3 - Additional Vegetation Management to be Confirmed Following Construction
 - Tower Footing
 - TRCA Regulation Limit



CONSTRUCTION AND VEGETATION MANAGEMENT
FIGURE 6-7



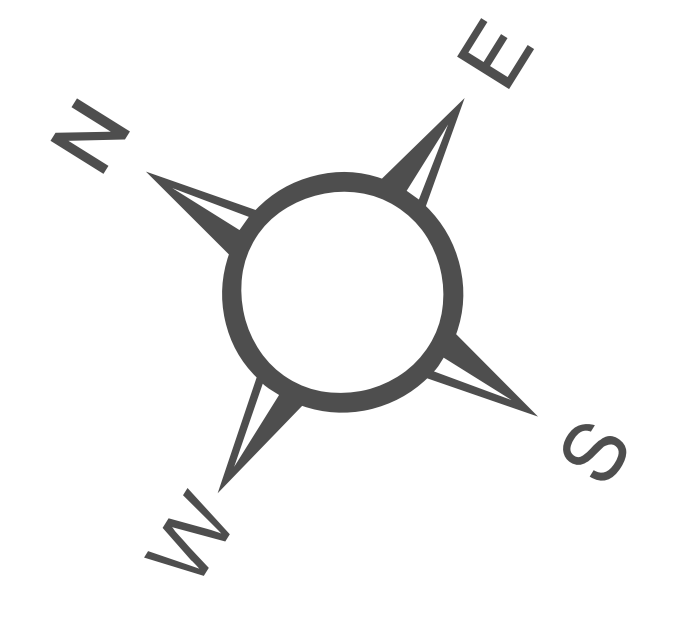
1:1,500
 0 25 50 100 m

Map is for Illustrative Purposes Only

- Legend**
- Existing Non-Energized 115 kV Transmission Line to be Replaced and Updated by a New 230 kV Transmission Line
 - ▲ Existing 115 kV Tower
 - New 230 kV Tower
 - Project Study Area (250m)
 - Stage 1 - Vegetation Removal for Temporary Access and Construction Activities
 - Stage 2 - Vegetation Trimming with Minimal Removal to Install Wires
 - Stage 3 - Additional Vegetation Management to be Confirmed Following Construction
 - Tower Footing
 - TRCA Regulation Limit



CONSTRUCTION AND VEGETATION MANAGEMENT
FIGURE 6-8



1:1,250
 0 25 50 100 m

Map is for Illustrative Purposes Only

- Legend**
- Existing Non-Energized 115 kV Transmission Line to be Replaced and Updated by a New 230 kV Transmission Line
 - ▲ Existing 115 kV Tower
 - New 230 kV Tower
 - Project Study Area (250m)
 - Stage 1 - Vegetation Removal for Temporary Access and Construction Activities
 - Stage 2 - Vegetation Trimming with Minimal Removal to Install Wires
 - Stage 3 - Additional Vegetation Management to be Confirmed Following Construction
 - Additional Stage 1 Removals
 - Area Proposed for Pollinator Planting
 - Tower Footing
 - TRCA Regulation Limit