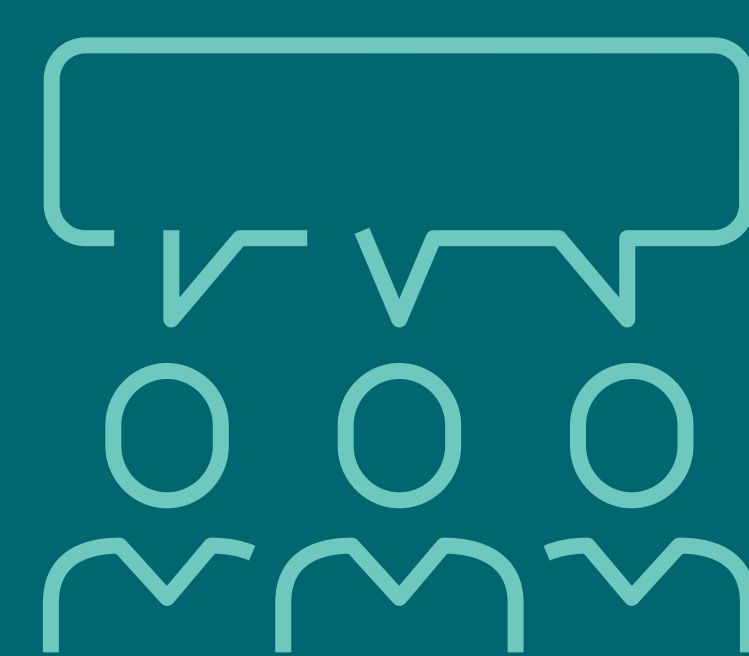
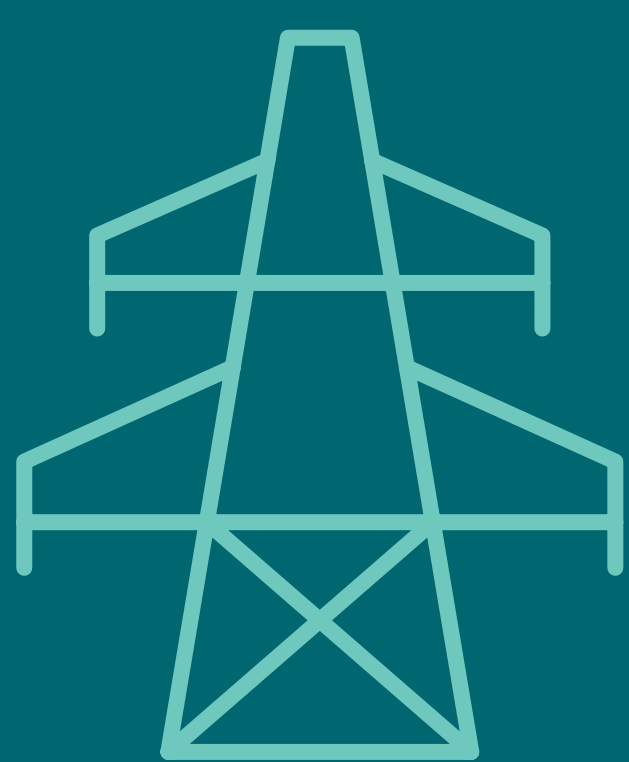


Welcome

Etobicoke Greenway Project Community Open House #1

Why we are here:

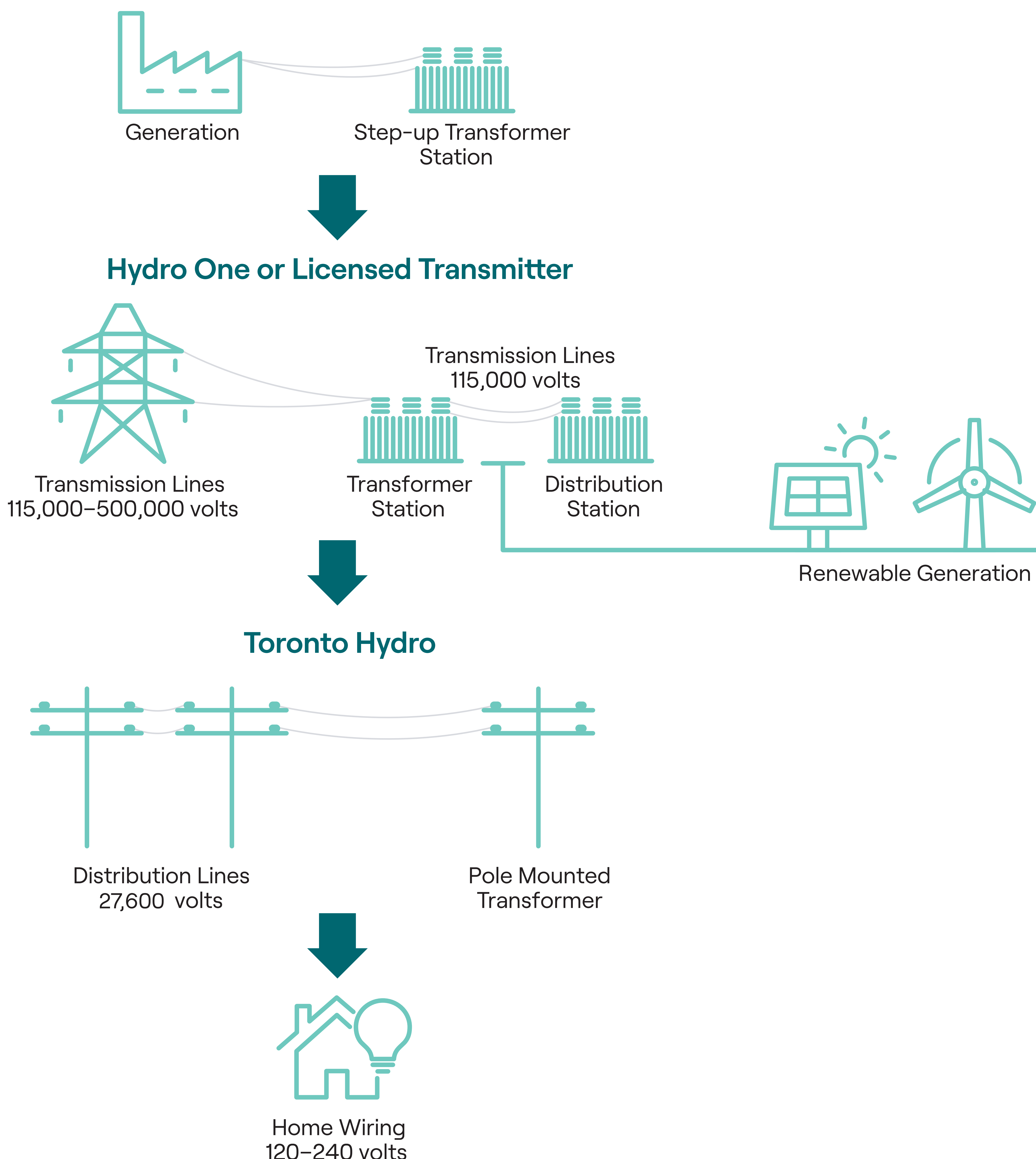
- Present project need
- Discuss the Environmental Assessment process
- Share what's involved in rebuilding and energizing the line, including vegetation requirements
- Introduce our commitment to re-imagine the corridor and collect initial input
- Listen to feedback and present next steps



We Keep the Lights On

We energize life for people and communities, helping Ontarians live a better and brighter future. We distribute power to Toronto Hydro, to help keep the lights on for homes and business in your community.

Ontario Power Generation and Private Generation Companies



Local Energy Partners

Building infrastructure to meet the energy needs of today and tomorrow involves a number of partners, including:



The Independent Electricity System Operator (IESO) oversees planning to ensure electricity needs are met both now and in the future.



Builds, owns, operates and maintains the electricity facilities across the Province of Ontario.

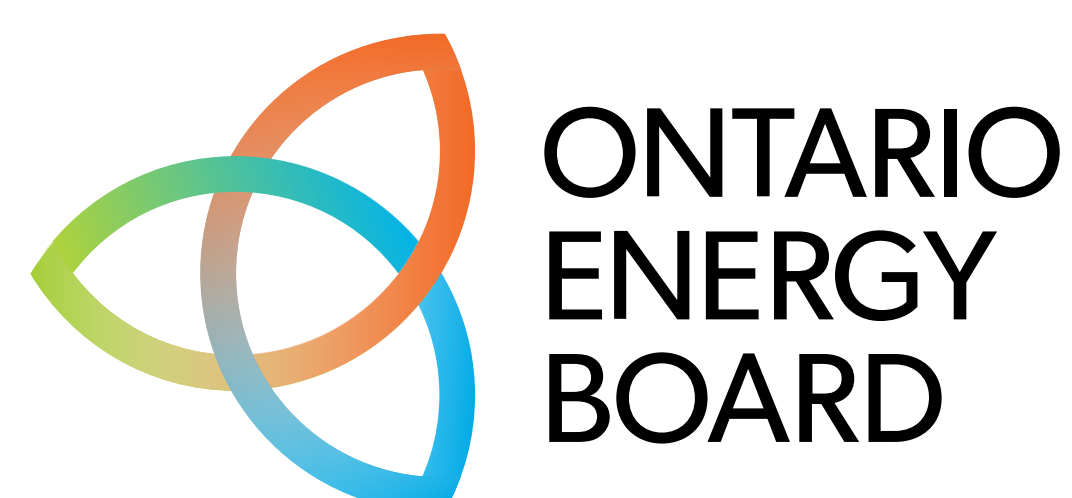


Builds, owns, operates and maintains the distribution electricity facilities within the City of Toronto.



Ministry of the Environment,
Conservation and Parks

Legislative authority for environmental assessments in Ontario.



Regulates the electricity market in Ontario, including electricity rates.

Meeting Your Community's Energy Needs

To ensure energy is available when and where its needed today and in the future, Hydro One is proposing to rebuild an existing 115 kilovolt (kV) transmission line into a 230 kV line between Richview and Manby Transmission Stations.

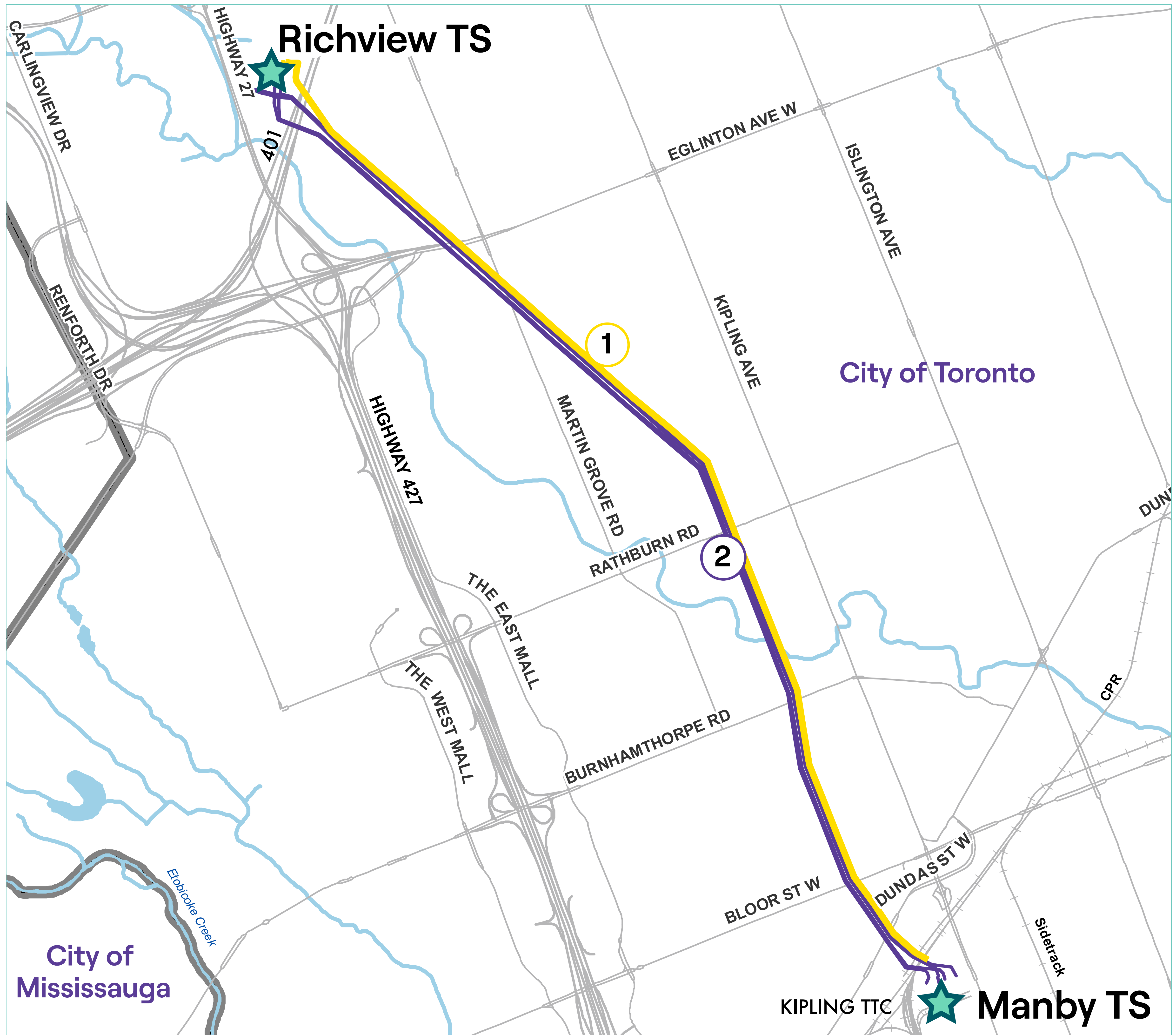
This 6.5 km hydro corridor is a critical electricity highway serving west and central Toronto. The corridor includes two 230 kV lines that are energized and one 115 kV line that is non-energized.

This project was identified in the Toronto Integrated Regional Resource Plan, led by the Independent Electricity System Operator with input from Toronto Hydro and Hydro One, to support economic growth, transit initiatives and electrification.

We are beginning the Class Environmental Assessment process and expect the in-service date will be 2026.



Etobicoke Greenway Corridor



Map Legend

1 115 kV Transmission Lines (being upgraded to 230 kV)

2 230 kV Transmission Lines



Transformer Station



Roads



Railway



Watercourse



Waterbody



Municipal Boundaries

What is a Class Environmental Assessment?

This project is subject to the Class Environmental Assessment (Class EA) for Minor Transmission Facilities (Hydro One, 2022), in accordance with the Ontario *Environmental Assessment Act*. This process ensures that transmission projects that have a predictable range of effects are planned and carried out in an environmentally acceptable manner.

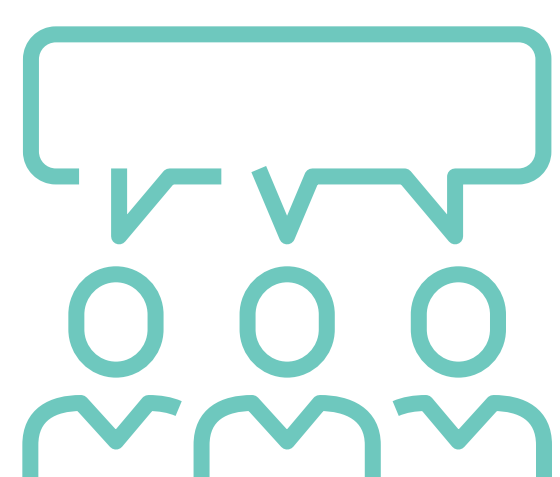
As we begin the Class EA process, all project planning will be shaped by:



Engagement with government agencies, residents, interest groups, elected officials and Indigenous communities



Collection of environmental data



Identification of potential effects and mitigation measures

Hydro One's Class EA is available at:

HydroOne.com/ClassEA

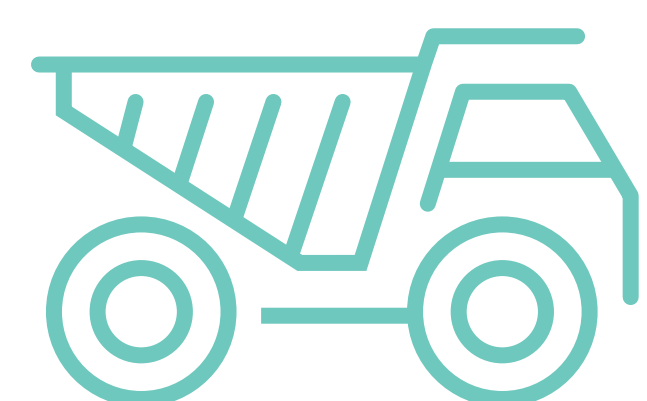
Project Milestones

- **June 2022**
Notice of Commencement
- **July 2022**
Community Open House Series #1
- **August 2022**
Corridor Walks, Community Workshops & Ongoing One-On-One Meetings
- **November 2022**
Community Open House Series #2
- **February 2023**
Draft Environmental Study Report Release for Public Review and Comment
- **May 2023**
Final Environmental Study Report Submission
- **2023**
OEB Section 92: Leave to Construct Approval Submitted
- **2023**
Community Open House Series #3
- **2024**
Construction Begins
- **2026**
Line In Service

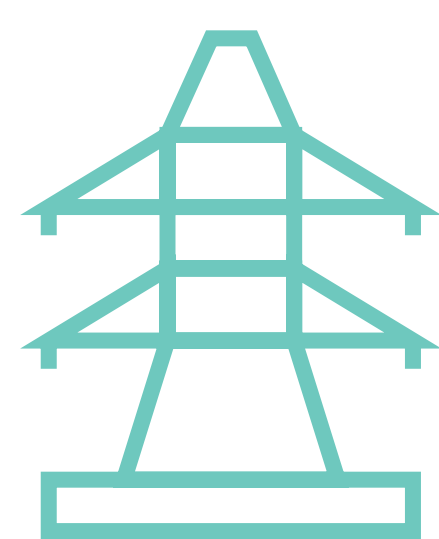
*All dates are anticipated and could change based on project feedback.

Energizing the Line

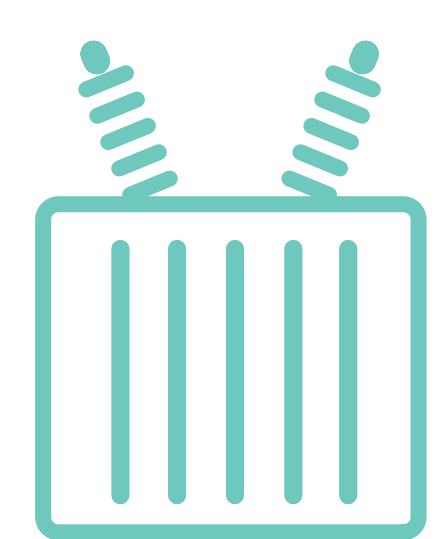
We are proposing to rebuild and energize the line by:



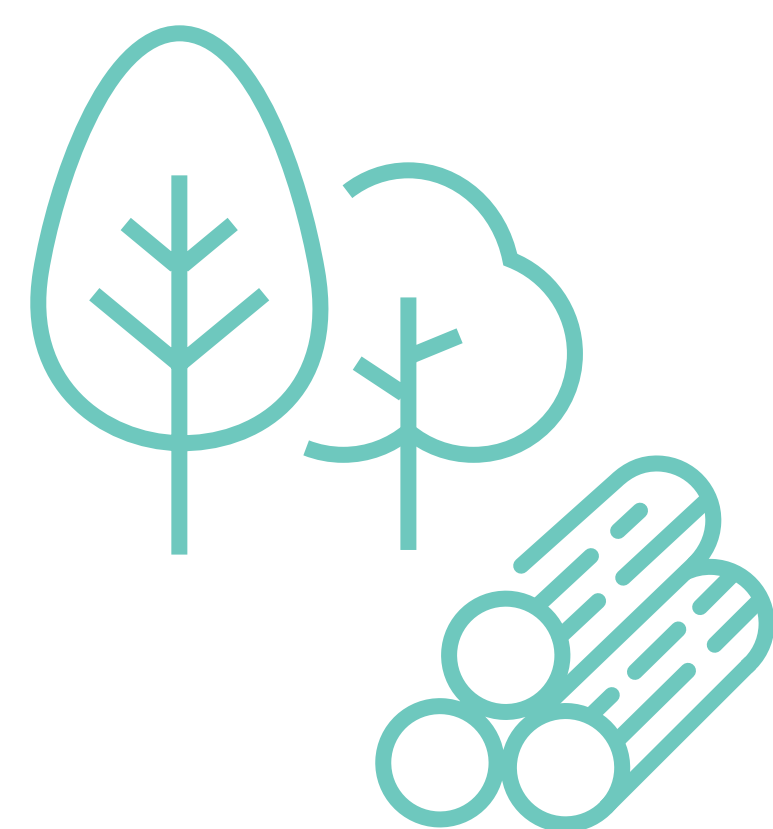
Removing towers and wires on the east side of the corridor



Installing new towers and wires that can carry a voltage of 230 kV



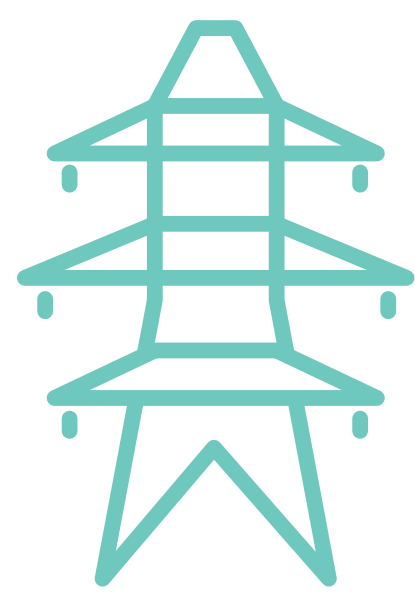
Connecting the new line to Richview TS and Manby TS, which will require work within the stations



Preparing the area for construction and the future energizing of the line by assessing obstructions and trimming or removing vegetation

Proposed Tower Design

Based on our preliminary design, the new towers will be:



Similar in design to the lattice structures on the west side of the corridor



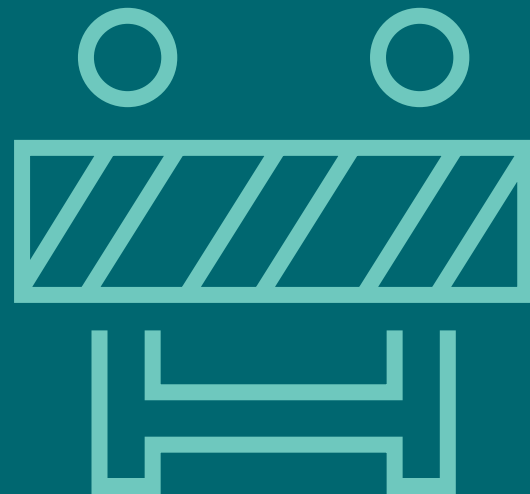

Slightly taller than existing towers



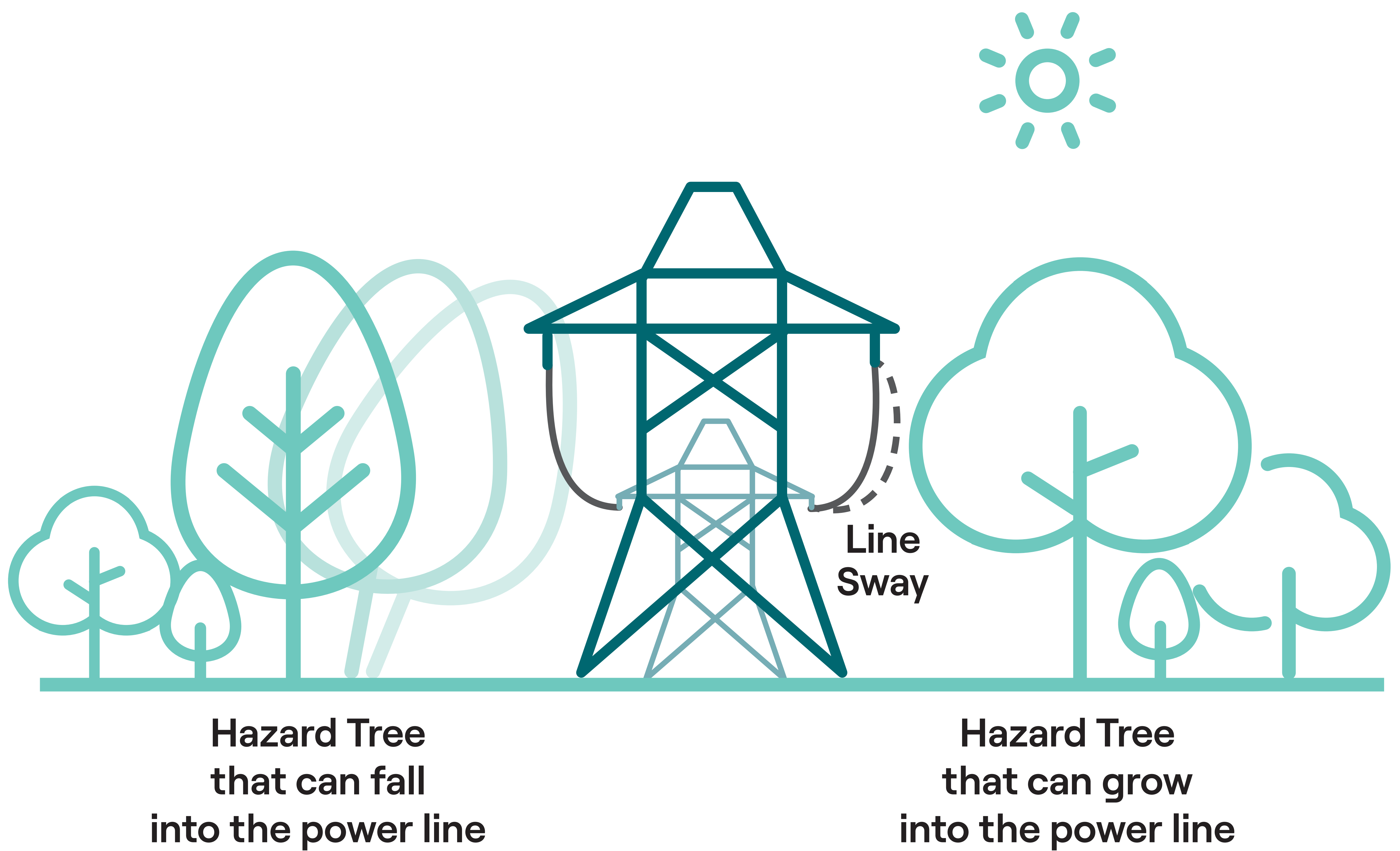
Generally constructed at or near existing locations

Vegetation Removal and Trimming

The existing transmission line has not been energized for several decades, resulting in vegetation that has grown significantly. Trimming and removal will be required to facilitate construction and the safe operation of the line in the future. In an effort to preserve vegetation, our team is exploring various construction methods and staging the timing of the vegetation work.

Requirements for Construction 	Requirements to Energize the Line 
<ul style="list-style-type: none"> • In and around the bases of existing towers • Where equipment must be set-up • Temporary access road locations 	<ul style="list-style-type: none"> • Trimming or removing mature trees depending on their location within the corridor and species type • Removing fast growing young trees or thick brush, and mature trees that are in poor health

Vegetation that Could Pose a Risk



Vegetation Management at Mimico Creek

Hydro One is working closely with Toronto and Region Conservation Authority (TRCA) to mitigate environmental impact in TRCA regulated areas. For example, protecting the ecologically sensitive area beside Echo Valley Park at Mimico Creek has informed decisions such as tower placement.

TRCA restoration priorities near Mimico Creek include:

- Planting that reduces creek bank and hillside erosion, and planting that shades the creek
- Enhancing biodiversity and habitat connection by planting pollinators and native plants, and controlling invasive species



TRCA Regulated Area at Mimico Creek

Vegetation Management near Willowridge Road

A TRCA-regulated area north of Eglinton Avenue is also part of the Mimico Creek watershed. TRCA priorities include:

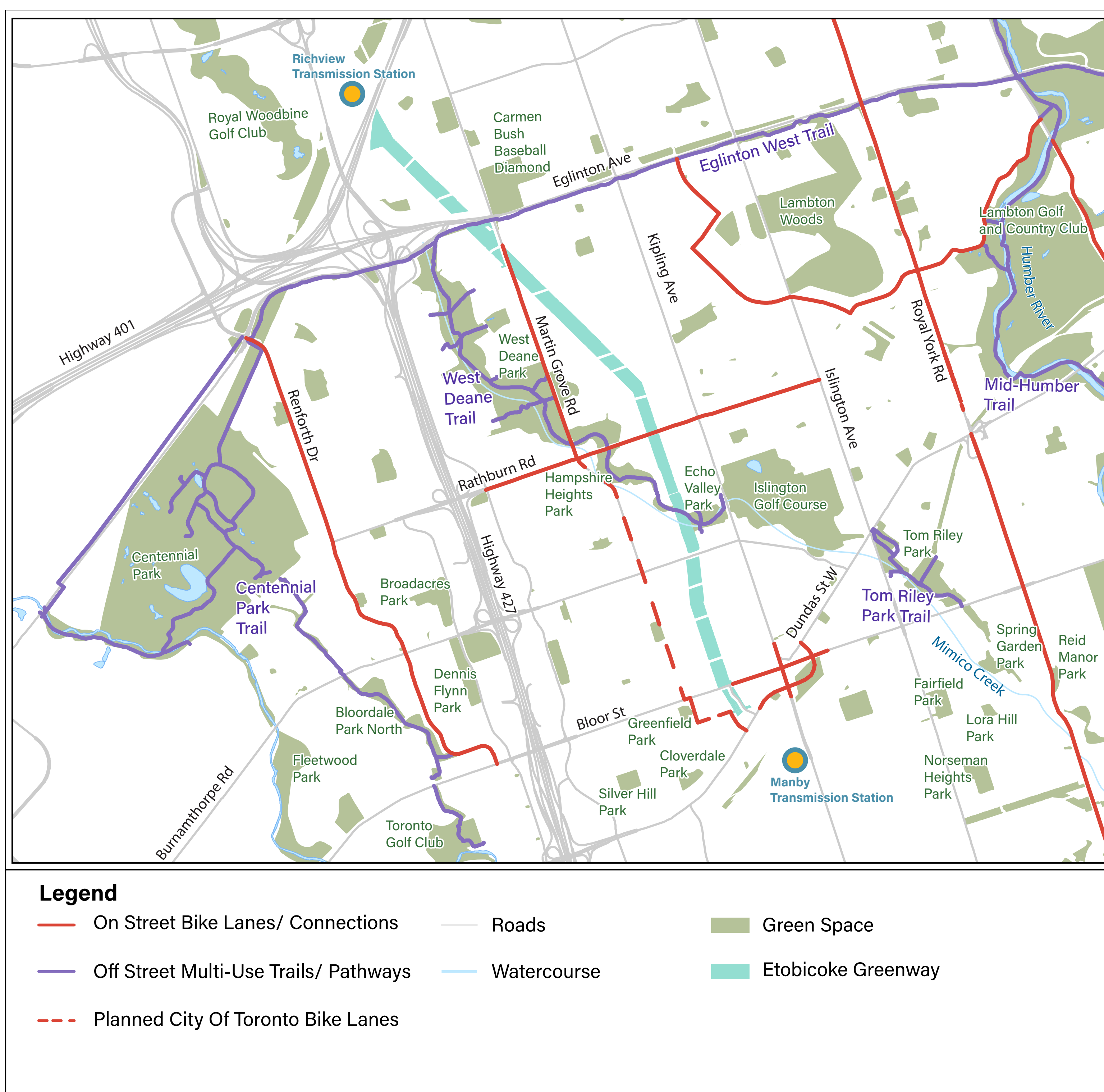
- Wetland and meadow restoration best practices, such as invasive species removal, soil improvement, and native planting



Reimagining the Etobicoke Greenway



Hydro One is investing in hydro corridors as urban assets that do more than deliver energy. Making the corridor publicly accessible is the first step. We are committed to working with community members to create a shared vision for the Etobicoke Greenway. We want to hear your ideas and feedback on ideas like paths and trails, as well as other recreational amenities.



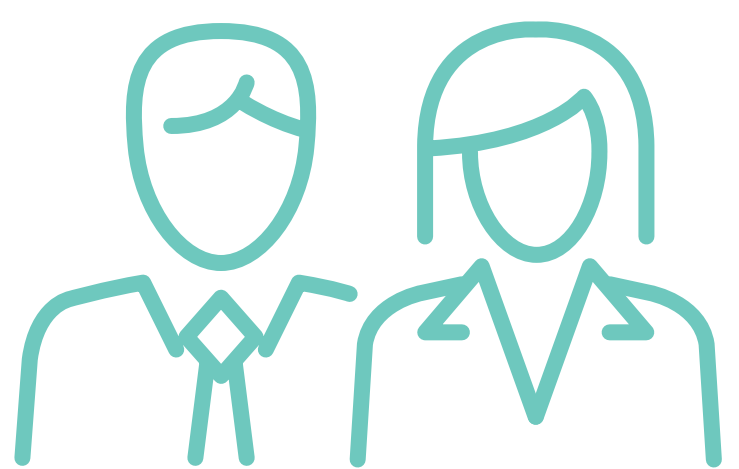
The Etobicoke Greenway has the potential to connect to Toronto's cycling and green space networks.

Our Approach to Reimagining the Corridor

Our process for working with the community to reimagine the corridor will include:



Listening to priorities for public use of the greenway during corridor walks and community workshops



Working with our design team and technical experts to balance community priorities with design, safety, technical and budget parameters



Co-creating a vision and plan, which we will share at our fall Community Open House



Exploring Design Opportunities

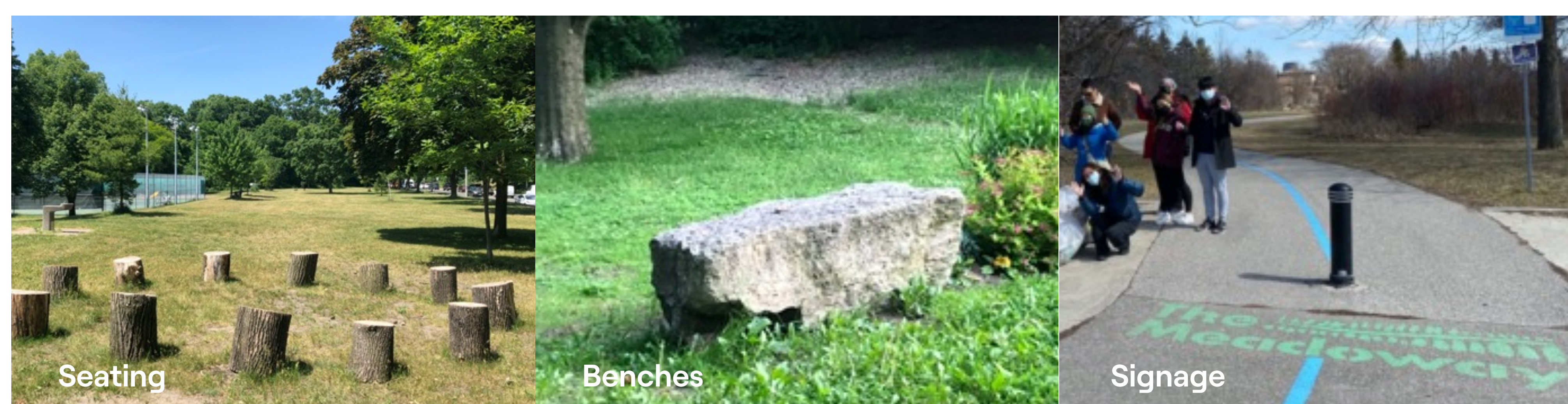
As part of the engagement and design process, Hydro One will work with the community to consider possible uses and amenities that meet corridor safety and technical requirements.



Paths



Places



Amenities



Planting

Community Engagement

We are committed to engaging with the community throughout each stage of the project by:

- Providing a number of opportunities to share information about the project
- Understanding the community's perspective, collecting input and considering options to mitigate impacts where possible
- Creating a shared vision for the corridor that can be enjoyed by the community for years to come

We invite community members to sign-up and participate at upcoming opportunities:

Community Open House




Corridor Walks




Community Workshops




How to get Involved

Your input is important to us. Join us at upcoming engagement opportunities. Additional information for each event will be distributed in advance.

Community Open Houses 	Community Walks 	Community Workshops 
<p>Community Open House #1 July 6, 2022 6:00 – 8:00 p.m. EST St. Andrew’s Presbyterian Church Islington 3819 Bloor Street West</p>	<p>Walk #1 (from Dundas Street to Mattice Avenue) August, 2022</p>	<p>Workshop #1 (South) Summer, 2022</p>
<p>Community Open House #2 July 14, 2022 6:00 – 8:00 p.m. EST Martin Grove Baptist Church 35 Hedges Boulevard</p>	<p>Walk #2 (from Mattice Avenue to Echo Valley Park) August, 2022</p>	<p>Workshop #2 (North) Summer, 2022</p>
<p>Virtual Community Open House July 21, 2022 7:00 – 8:00 p.m. EST To participate dial 1-800-581-4127 and visit EtobicokeGreenway.ca to view the live stream</p>	<p>Walk #3 (from Echo Valley Park to North Heights Road) August, 2022</p>	
	<p>Walk #4 (from North Heights Road to Eglinton Road) August, 2022</p>	
	<p>Walk #5 (from Eglinton Road to Highway 401) August, 2022</p>	

Thank You for Coming

Please fill out a comment form before you leave, or send us your comments afterward.

Join our project contact list to receive important updates.



416.345.6799



Community.Relations@HydroOne.com



www.HydroOne.com/Etobicoke

Follow us



@HydroOneOfficial



@HydroOneOfficial



@HydroOne