

Welcome

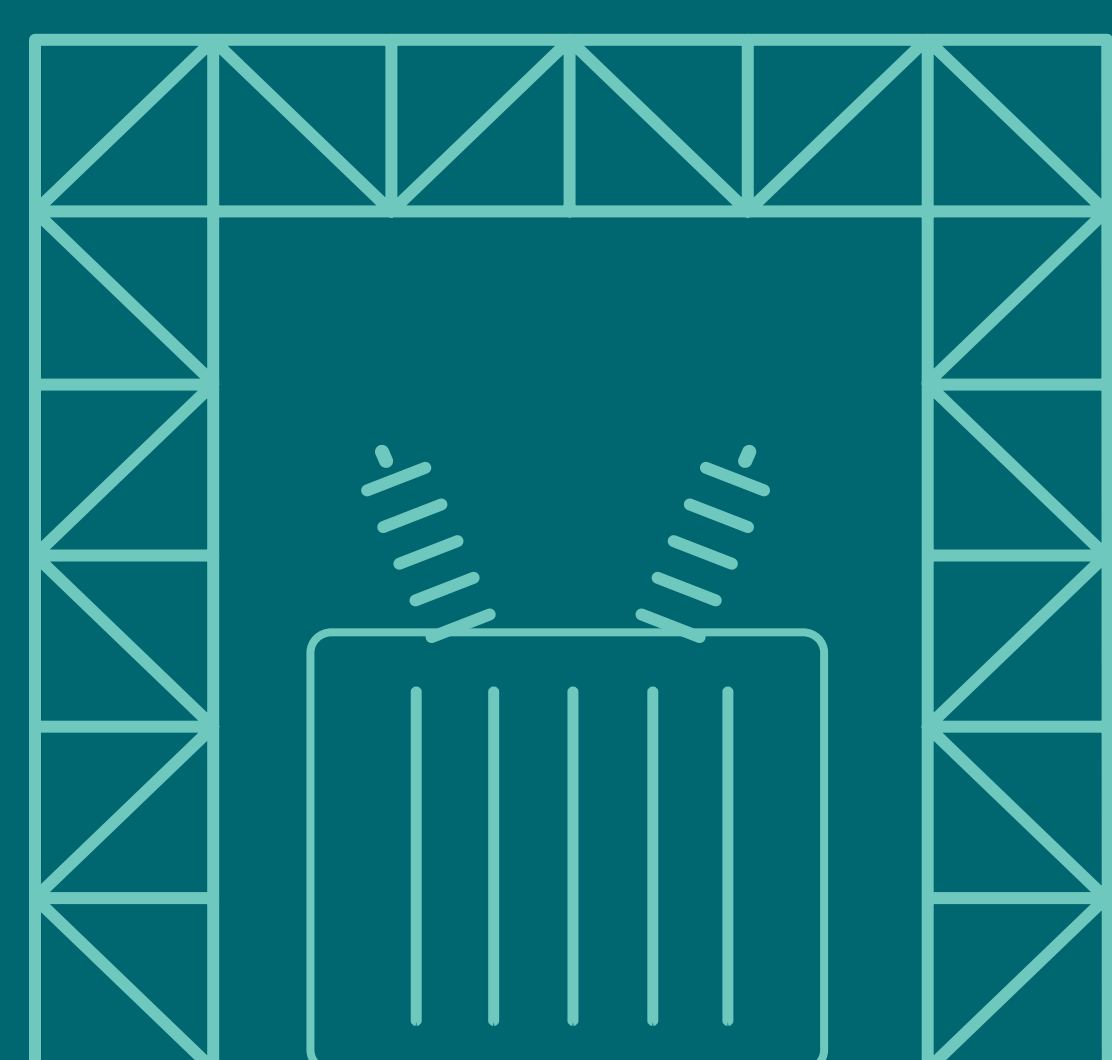
To our Community Open House

Merivale Transformer Station Modernization

November 15, 2022

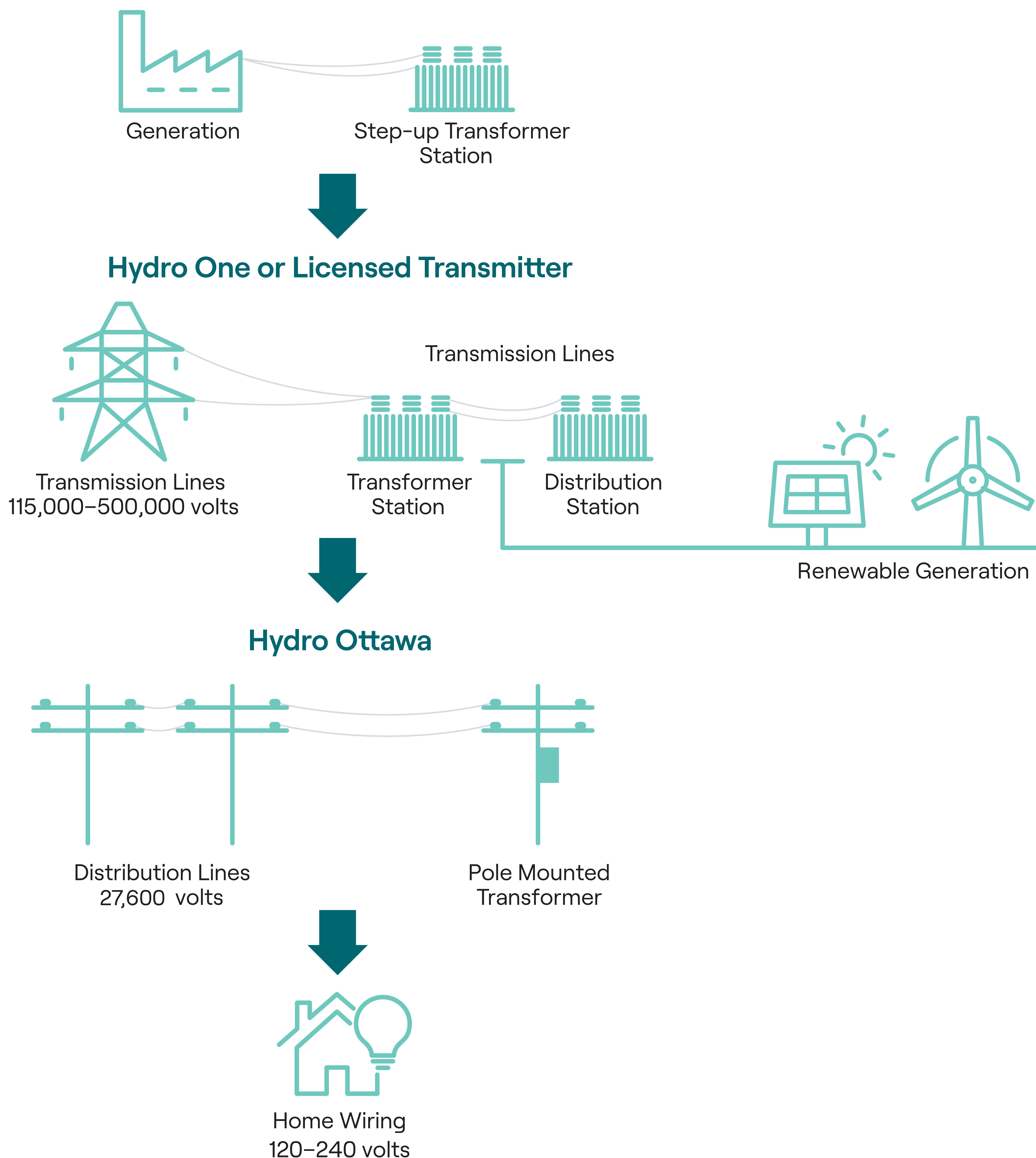
Why we are here:

- Present project need
- Share what's involved in the station modernization
- Listen to feedback, answer questions and present next steps



How electricity is delivered to your community

Ontario Power Generation and Private Generation Companies



Energy partners

Building infrastructure to meet the energy needs of today and tomorrow involves a number of partners, including:



The Independent Electricity System Operator (IESO) oversees planning to ensure electricity needs are met both now and in the future.



Builds, owns, operates and maintains the electricity facilities across the province of Ontario.



Builds, owns, operates and maintains the distribution of electricity facilities within the City of Ottawa and the Village of Casselman in Ontario.



**Ministry of the Environment,
Conservation and Parks**

Legislative Authority for environmental assessments in Ontario.

Project need

Merivale TS is one of two critical stations that together, supply approximately 60% of power for the City of Ottawa, and upgrades are needed to make sure the station can meet future electricity needs.

This project will replace and modernize aging infrastructure, increase the capacity of the station and improve the flow of power throughout the region.

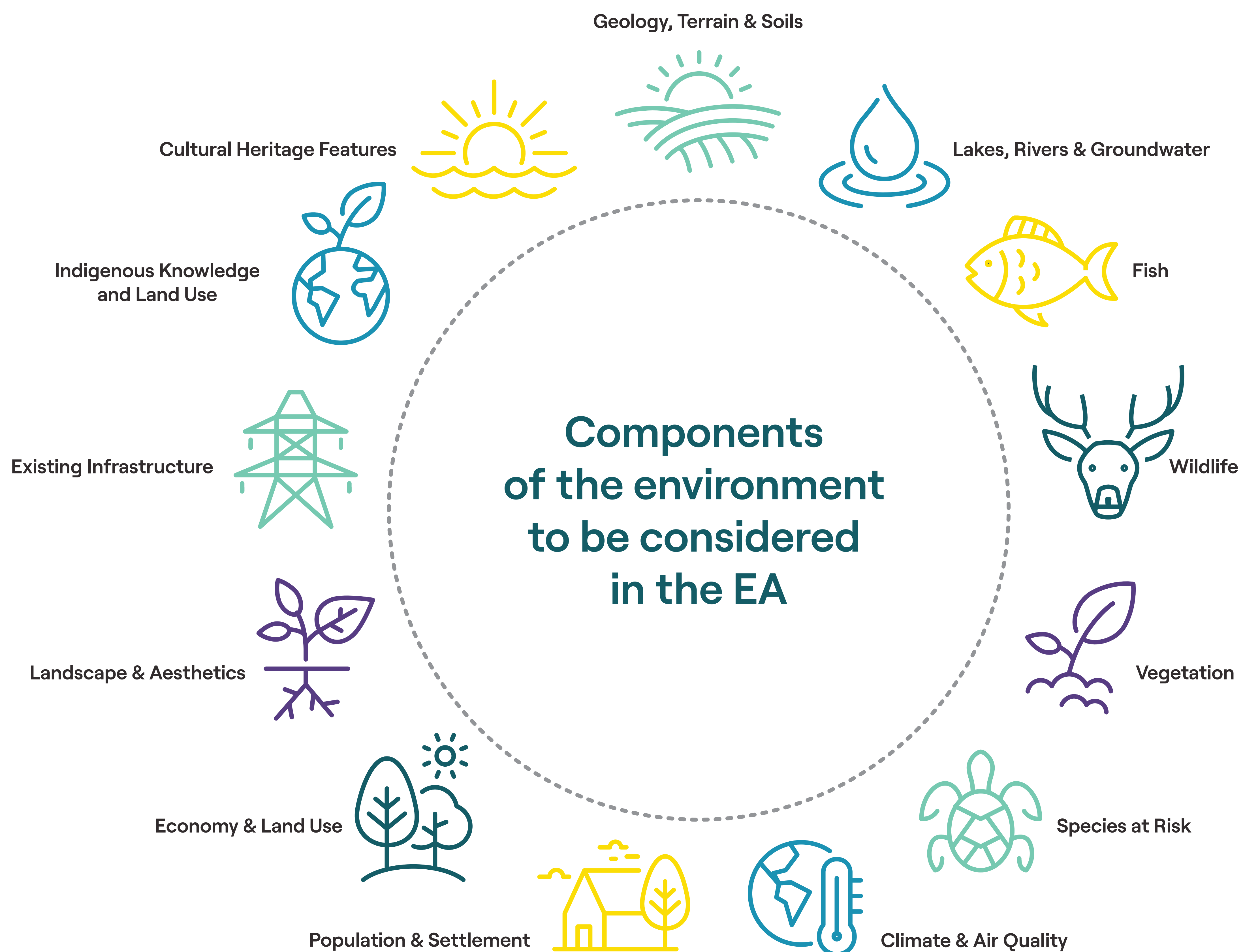
Upgrades made at Merivale TS will support additional power to flow to 20+ Hydro One and Hydro Ottawa connected stations.



Class Environmental Assessment

We are completing a Class Environmental Assessment for Minor Transmission Facilities – Class EA Screening Process, under Ontario’s *Environmental Assessment Act*.

Through this process, we will identify and assess potential project effects, including effects on:

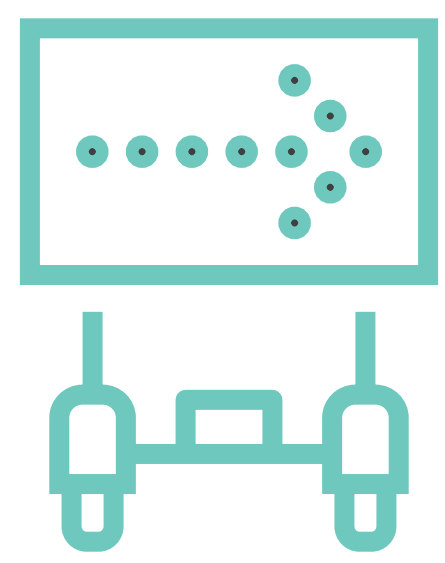


What the proposed work involves

- A station expansion on Hydro One property to accommodate new critical equipment
- 2 new transformers and associated equipment
- 1 existing transformer to be removed
- Re-align transmission lines to connect to the new equipment
- New structures added inside and outside the new station boundaries
- A new protections and control building and removal of the existing building
- A new emergency access road on the west side of the station
- Select vegetation removal to accommodate the station expansion and critical equipment
- A 1.7km temporary by-pass line along Cedarview Road to ensure continued power supply to customers during construction

Project considerations

Hydro One is committed to mitigating disruption to the community by:



Providing detour signs for closure of walking path during construction



Completing studies of wildlife, vegetation, soil, water, air quality, noise and archaeological resources in the project area to identify potential project effects



Minimizing scope of vegetation removal to allow buffer to surrounding residents

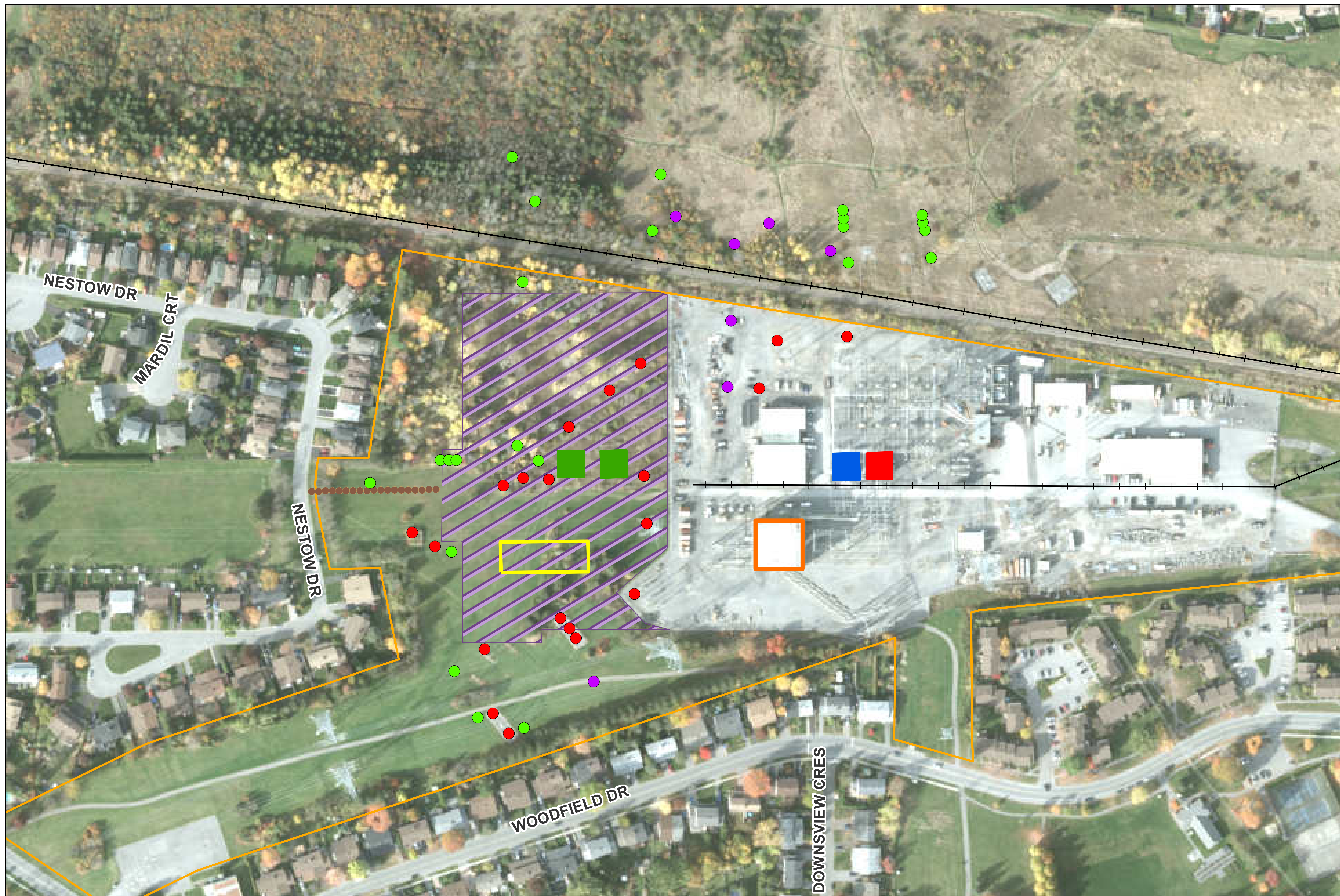


Ensuring replanting opportunities following construction



Investing in the community by working with local leaders to develop a beautification plan that reflects the interests of the community

Map of proposed work



Produced By: Hydro One Networks Inc., GIS Services

 Date: Jun 20, 2022 / Revised: Oct 18, 2022

 Map22-052_MerivaleTS_Refurbishment_ProjectAreaMap_v2.1

 (C) Copyright Hydro One Networks Inc. All rights reserved. No part of this drawing may be redistributed or reproduced in any form by any photographic, electronic, mechanical or any other means, or used in any information storage or retrieval system. Neither Hydro One Networks Inc. nor any of its affiliates assumes liability for any errors or omissions.

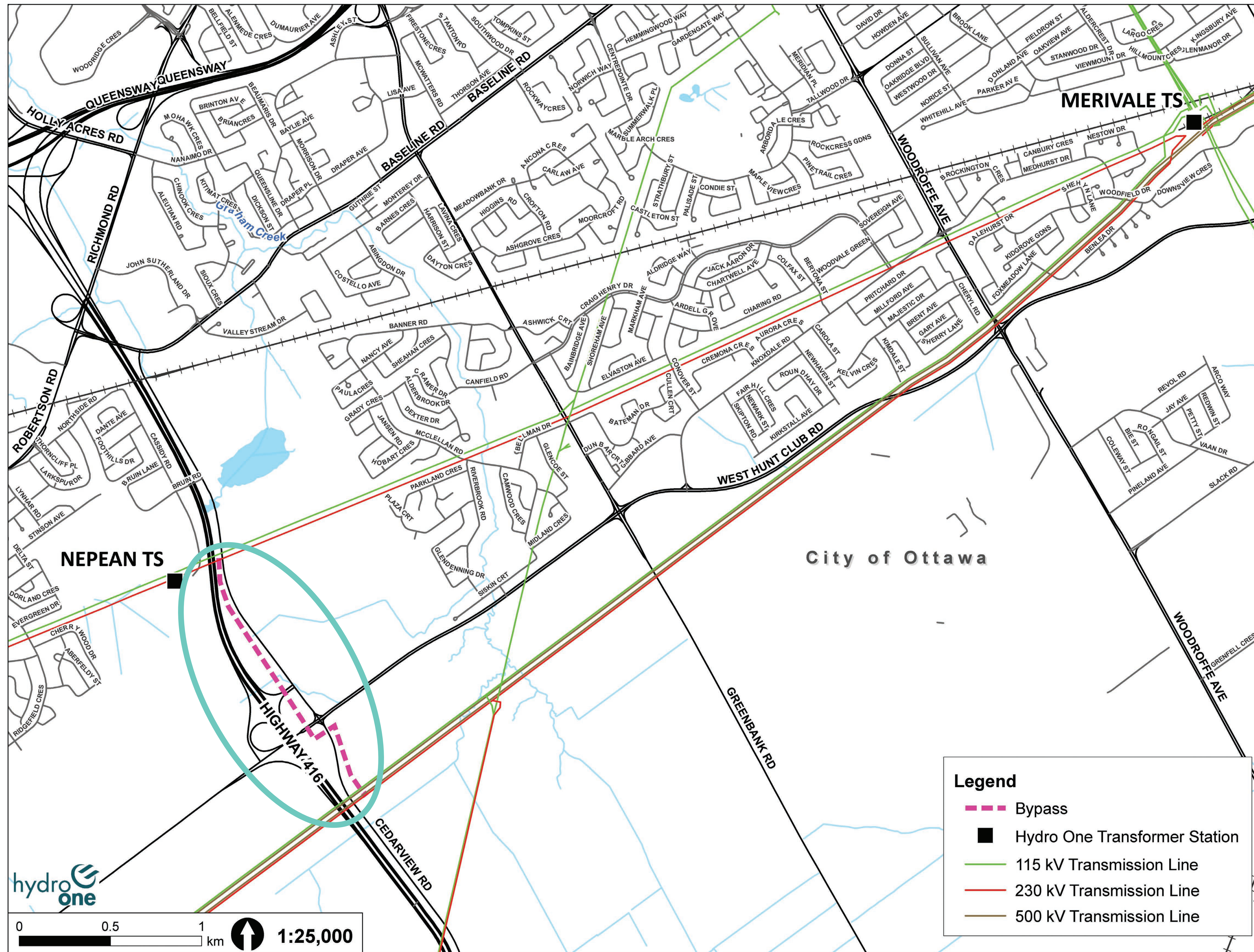
 Produced by Hydro One under Licence with the Ontario Ministry of Natural Resources © Queen's Printer for Ontario, 2022.

- Existing Structures to be Removed
- New Structures
- Temporary Structures
- Existing Building Planned for Removal
- New Access Road
- New GIS Building
- New Transformers
- Existing Transformer to Remain Unchanged
- Existing Transformer to be Removed
- Merivale TS Property Boundary
- Proposed Station Expansion Area
- Railway

Merivale Transformer Station Modernization

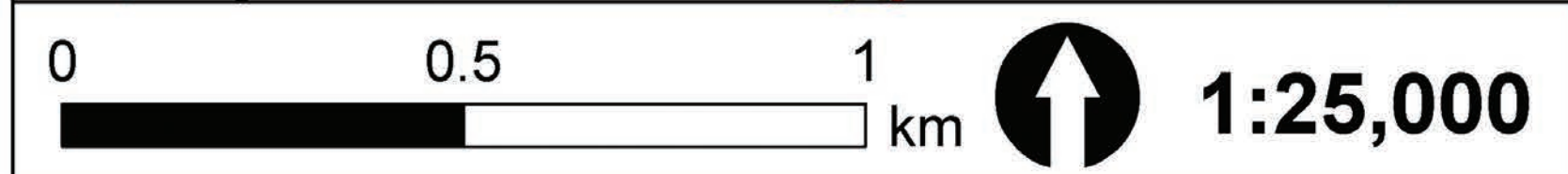
1:3,000
0
50
100
m

Cedarview Bypass



Legend

- Bypass
- Hydro One Transformer Station
- 115 kV Transmission Line
- 230 kV Transmission Line
- 500 kV Transmission Line



Produced By: Hydro One Networks, GIS Services
 Date: Oct 11, 2022 / Map22-074_MerivaleTS_v2

© Copyright Hydro One Networks Inc. All rights reserved. No part of this drawing may be redistributed or reproduced in any form by any photographic, electronic, mechanical or any other means, or used in any information storage or retrieval system. Neither Hydro One Networks Inc. nor any of its affiliates assumes liability for any errors or omissions. Produced by Hydro One under Licence with the Ontario Ministry of Natural Resources © Queen's Printer for Ontario, 2022. NOT TO BE REPRODUCED OR REDISTRIBUTED CONFIDENTIAL TO HYDRO ONE NETWORKS INC.

Types of structures



Lattice Steel Tower



H-Frame Wood Structure



BP Steel Structures



Dead End Wood Structure



Steel Pole

Anticipated project timeline

- 
- A vertical timeline graphic on the left side of the page. It consists of a thin teal vertical line with seven circular markers. The second marker from the top is filled with a solid teal color, while the other six markers are hollow with a teal outline. A light grey horizontal bar highlights the text area corresponding to the second marker (November 2022).
- September 2022**
Notice of Commencement & newspaper advertisements
 - November 2022**
Community Open House #1, Introduction of Project
 - December 2022**
Class EA Screening Report submitted to the Ministry of Environment, Conservation, and Parks
 - Early 2023**
Community Open House #2, Pre-construction updates
 - Spring 2023**
Proposed construction start at Merivale TS
 - 2026**
New equipment in service
 - 2028**
Construction completed

Thank you for joining us!



Please provide your feedback and join our project contact list by contacting Hydro One Community Relations:



1.877.345.679



Community.Relations@HydroOne.com



HydroOne.com/MerivaleTS

