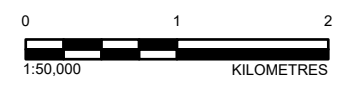
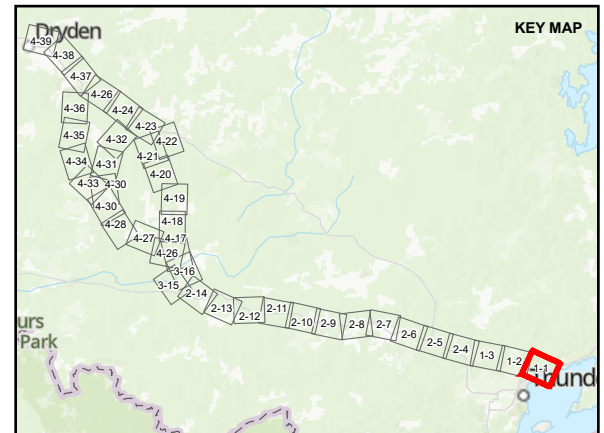


- LEGEND**
- BANK SWALLOW STATION
 - BARN SWALLOW STATION
 - BREEDING BIRD PRIMARY STATION
 - BREEDING BIRD ALTERNATE STATION
 - EASTERN WHIP-POOR-WILL STATION
 - GRASSLAND BIRD STATION
 - LEAST BITTERN STATION
 - - - ALTERNATIVE ROUTE 1
 - - - ALTERNATIVE ROUTE 1A
 - - - ALTERNATIVE ROUTE 1B - 1
 - - - ALTERNATIVE ROUTE 1B - 2
 - LOCAL ROAD
 - SECONDARY HIGHWAY
 - RAILWAY
 - - - TRAIL
 - WATERCOURSE
 - ▭ LOCAL STUDY AREA
 - ▭ WATERBODY



DRAFT

REFERENCE(S)
 BASE DATA COURTESY OF LAND INFORMATION ONTARIO MNR. IMAGERY COPYRIGHT © ESRI AND ITS LICENSORS. USED UNDER LICENSE. ALL RIGHTS RESERVED.
 PROJECTION: CSRS UTM ZONE 15 DATUM: NAD 83

CLIENT
 HYDRO ONE NETWORKS INC.

PROJECT
 WAASIGAN TRANSMISSION LINE

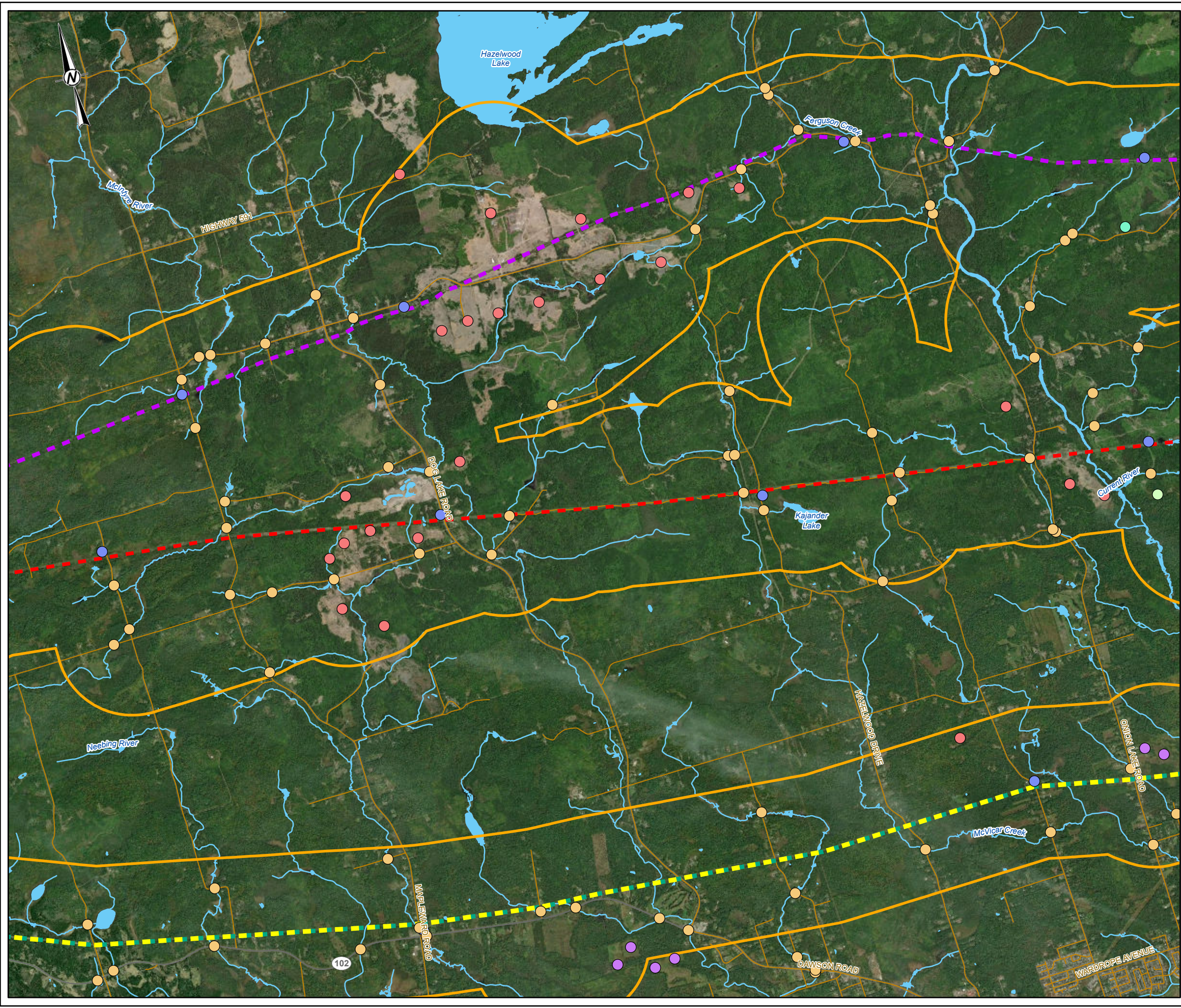
TITLE
BREEDING BIRD SURVEY LOCATIONS – THUNDER BAY

CONSULTANT	YYYY-MM-DD	2022-05-19
	DESIGNED	EG
	PREPARED	DB
	REVIEWED	
	APPROVED	

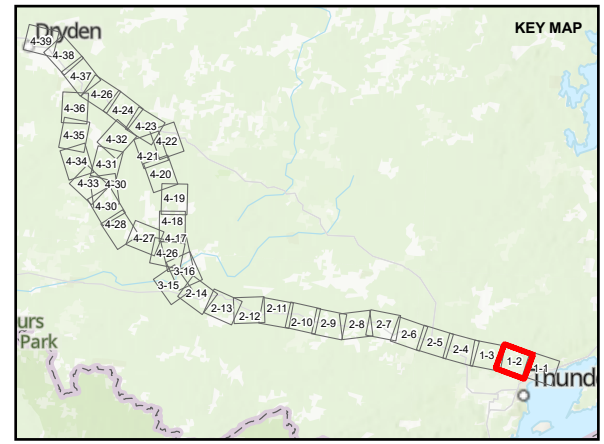
PROJECT NO.	CONTROL	REV.	FIGURE
20137728	0015	A	1-1

PATH: S:\Client\Hydro One\Waasigan\09_PROJ\20137728\04_PROJ\03015_Public_Engagement\BBS_MapBooks\01137728-0015-G-001.aprx PRINTED ON: Fri, 05/16/2024 10:56:16 AM

IF THIS MEASUREMENT DOES NOT MATCH WHAT IS SHOWN, THE SHEET SIZE HAS BEEN MODIFIED FROM: ANSI B



- LEGEND**
- BANK SWALLOW STATION
 - BARN SWALLOW STATION
 - BREEDING BIRD PRIMARY STATION
 - BREEDING BIRD ALTERNATE STATION
 - EASTERN WHIP-POOR-WILL STATION
 - GRASSLAND BIRD STATION
 - LEAST BITTERN STATION
 - - - ALTERNATIVE ROUTE 1
 - - - ALTERNATIVE ROUTE 1A
 - - - ALTERNATIVE ROUTE 1B - 1
 - - - ALTERNATIVE ROUTE 1B - 2
 - LOCAL ROAD
 - SECONDARY HIGHWAY
 - WATERCOURSE
 - ▭ LOCAL STUDY AREA
 - ▭ WATERBODY



DRAFT

REFERENCE(S)
 BASE DATA COURTESY OF LAND INFORMATION ONTARIO MNR. IMAGERY COPYRIGHT © ESRI AND ITS LICENSORS. USED UNDER LICENSE. ALL RIGHTS RESERVED.
 PROJECTION: CSRS UTM ZONE 15 DATUM: NAD 83

CLIENT
 HYDRO ONE NETWORKS INC.

PROJECT
 WAASIGAN TRANSMISSION LINE

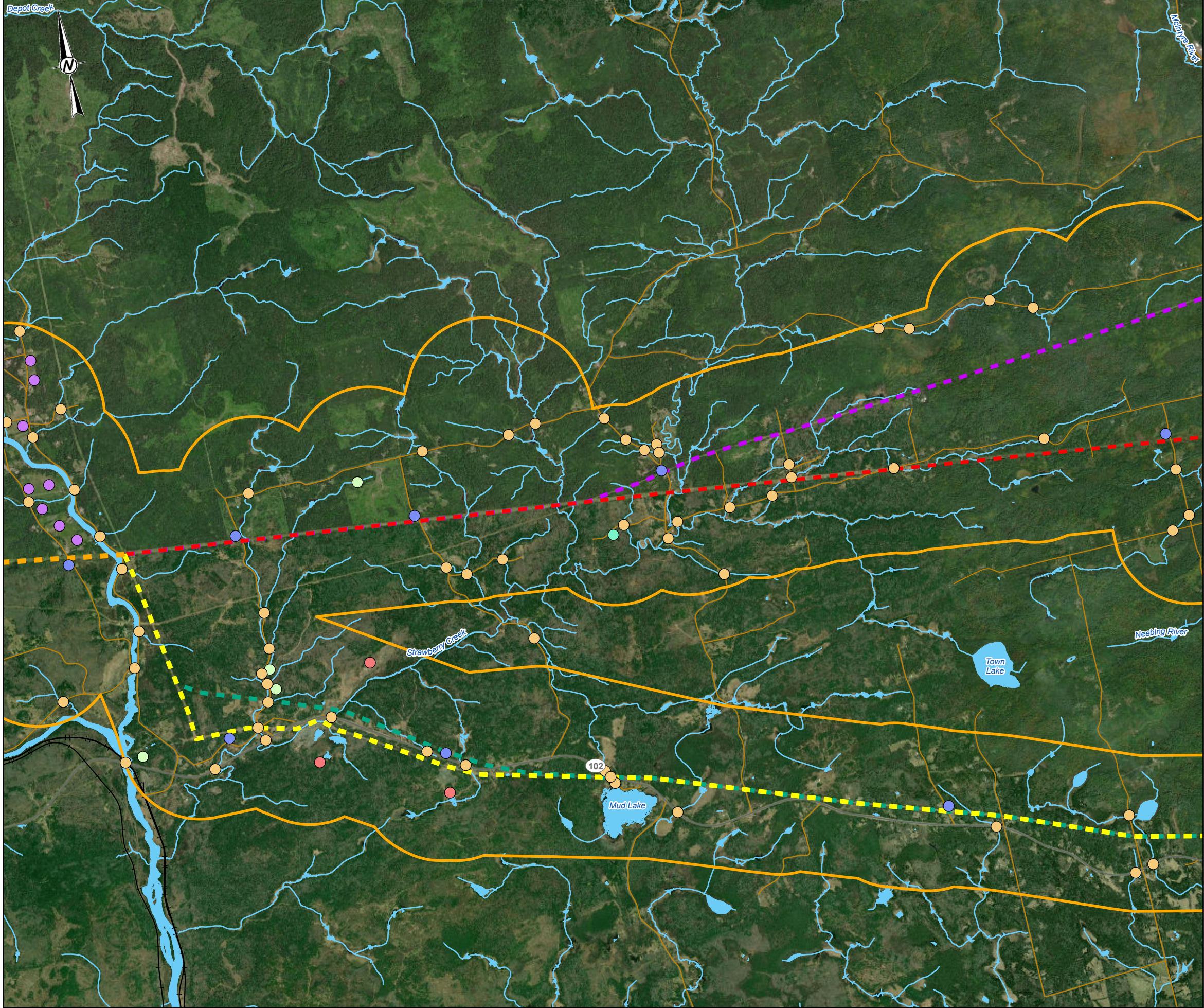
TITLE
BREEDING BIRD SURVEY LOCATIONS – THUNDER BAY

CONSULTANT	YYYY-MM-DD	2022-05-19
	DESIGNED	EG
	PREPARED	DB
	REVIEWED	
	APPROVED	

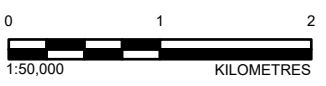
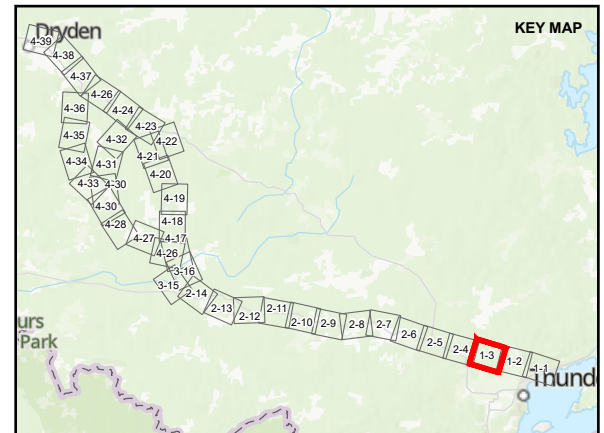
PROJECT NO. 20137728	CONTROL 0015	REV. A	FIGURE 1-2
-------------------------	-----------------	-----------	---------------

PATH: S:\Client\HydroOne\Waasigan\09_PROJ\20137728\04_PUBLIC\Engagement\BBS_MapBooks\01\17728-0015-G-0001.aprx PRINTED ON: Fri, 03/04/2023 10:42 AM

IF THIS MEASUREMENT DOES NOT MATCH WHAT IS SHOWN, THE SHEET SIZE HAS BEEN MODIFIED FROM: ANSI B



- LEGEND**
- BANK SWALLOW STATION
 - BARN SWALLOW STATION
 - BREEDING BIRD PRIMARY STATION
 - BREEDING BIRD ALTERNATE STATION
 - EASTERN WHIP-POOR-WILL STATION
 - GRASSLAND BIRD STATION
 - LEAST BITTERN STATION
 - - - ALTERNATIVE ROUTE 1
 - - - ALTERNATIVE ROUTE 1A
 - - - ALTERNATIVE ROUTE 1B - 1
 - - - ALTERNATIVE ROUTE 1B - 2
 - - - ALTERNATIVE ROUTE 1C
 - LOCAL ROAD
 - SECONDARY HIGHWAY
 - + — RAILWAY
 - WATERCOURSE
 - LOCAL STUDY AREA
 - WATERBODY



DRAFT

REFERENCE(S)
 BASE DATA COURTESY OF LAND INFORMATION ONTARIO MNR. IMAGERY COPYRIGHT © ESRI AND ITS LICENSORS. USED UNDER LICENSE, ALL RIGHTS RESERVED.
 PROJECTION: CSRS UTM ZONE 15 DATUM: NAD 83

CLIENT
 HYDRO ONE NETWORKS INC.

PROJECT
 WAASIGAN TRANSMISSION LINE

TITLE
BREEDING BIRD SURVEY LOCATIONS – THUNDER BAY

CONSULTANT	YYYY-MM-DD	2022-05-19
wsp GOLDER	DESIGNED	EG
	PREPARED	DB
	REVIEWED	
	APPROVED	

PROJECT NO. 20137728	CONTROL 0015	REV. A	FIGURE 1-3
-------------------------	-----------------	-----------	---------------

PATH: S:\Client\Hydro One\Waasigan\09_PROJ\20137728\04_Public_Engagement\BBS_MapBooks\01\137728-001-F-G-001.aprx PRINTED ON: Fri, 5/20/2022 10:08 AM

IF THIS MEASUREMENT DOES NOT MATCH WHAT IS SHOWN, THE SHEET SIZE HAS BEEN MODIFIED FROM: ANSI B