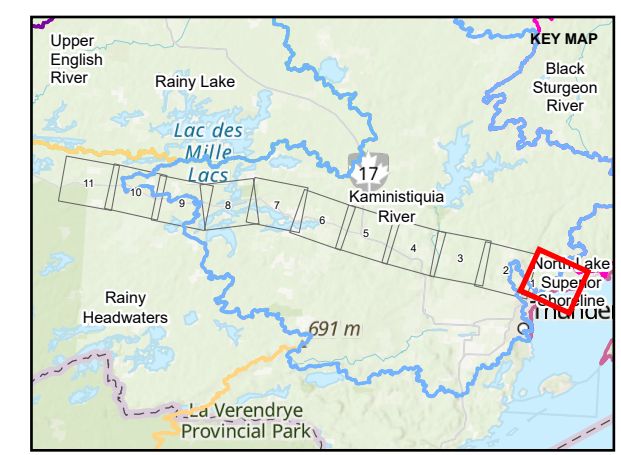


- LEGEND**
- ▲ AQUATICS FIELD SITE
 - ▲ ALTERNATE AQUATICS FIELD SITE
 - ▲ SURFACE WATER AND FISH HABITAT ASSESSMENT SITE
 - - - ALTERNATIVE ROUTE 1
 - - - ALTERNATIVE ROUTE 1A
 - - - ALTERNATIVE ROUTE 1B - 1
 - - - ALTERNATIVE ROUTE 1B - 2
 - LOCAL ROAD
 - SECONDARY HIGHWAY
 - RAILWAY
 - - - TRAIL
 - WATERCOURSE
 - LOCAL STUDY AREA
 - TERTIARY WATERSHED BOUNDARY
 - BLACK STURGEON RIVER
 - KAMINISTQUIA RIVER
 - NORTH LAKE SUPERIOR SHORELINE



0 1 2
1:50,000 KILOMETRES

DRAFT

REFERENCE(S)
 BASE DATA COURTESY OF LAND INFORMATION ONTARIO MNR. IMAGERY COPYRIGHT © ESRI AND ITS LICENSORS. USED UNDER LICENSE, ALL RIGHTS RESERVED.
 PROJECTION: CSRS UTM ZONE 15 DATUM: NAD 83

CLIENT
 HYDRO ONE NETWORKS INC.

PROJECT
 WAASIGAN TRANSMISSION LINE

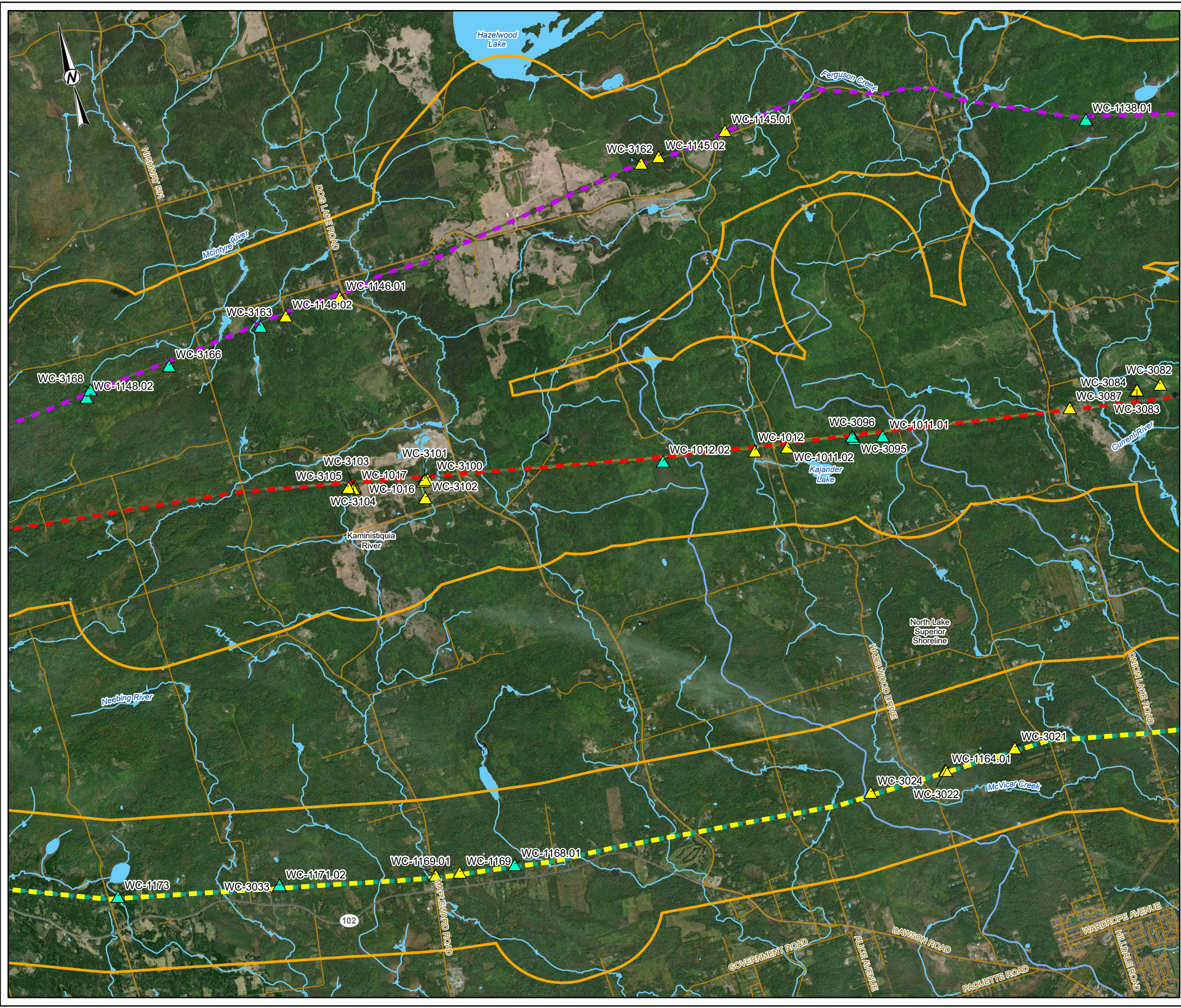
TITLE
AQUATICS SURVEY LOCATIONS - THUNDER BAY

CONSULTANT	YYYY-MM-DD	2022-06-01
wsp GOLDER	DESIGNED	JL
	PREPARED	MM
	REVIEWED	
	APPROVED	

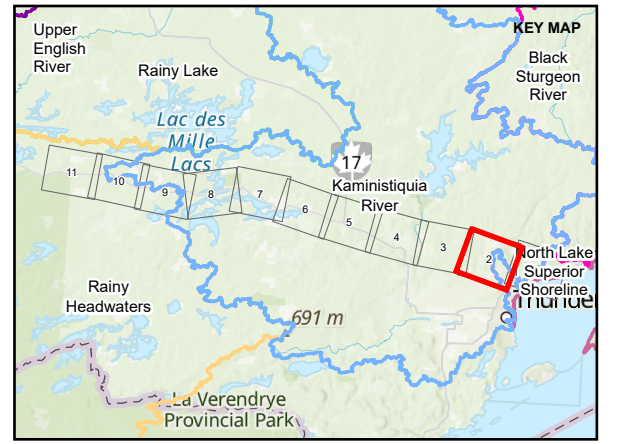
PROJECT NO.	CONTROL	REV.	FIGURE
20137728	0017	A	1-1

PATH: S:\Chemistry\Drawings\Waasigan\09_PROJ\20137728\0017_Fish_Permit\20137728_0017_G-0011.apr. PRINTED ON: AT: 10:44:31 AM

IF THIS MEASUREMENT DOES NOT MATCH WHAT IS SHOWN, THE SHEET SIZE HAS BEEN MODIFIED FROM: ANSI B



- LEGEND**
- ▲ AQUATICS FIELD SITE
 - ▲ ALTERNATE AQUATICS FIELD SITE
 - - - ALTERNATIVE ROUTE 1
 - - - ALTERNATIVE ROUTE 1A
 - - - ALTERNATIVE ROUTE 1B - 1
 - - - ALTERNATIVE ROUTE 1B - 2
 - LOCAL ROAD
 - SECONDARY HIGHWAY
 - WATERCOURSE
 - LOCAL STUDY AREA
 - TERTIARY WATERSHED BOUNDARY
 - KAMINISTQUIA RIVER
 - NORTH LAKE SUPERIOR SHORELINE



REFERENCE(S)
 BASE DATA COURTESY OF LAND INFORMATION ONTAIO MNR. IMAGERY COPYRIGHT © ESRI AND ITS LICENSORS. USED UNDER LICENSE, ALL RIGHTS RESERVED.
 PROJECTION: CSRS UTM ZONE 15 DATUM: NAD 83

CLIENT
 HYDRO ONE NETWORKS INC.

PROJECT
 WAASIGAN TRANSMISSION LINE

TITLE
 AQUATICS SURVEY LOCATIONS - THUNDER BAY

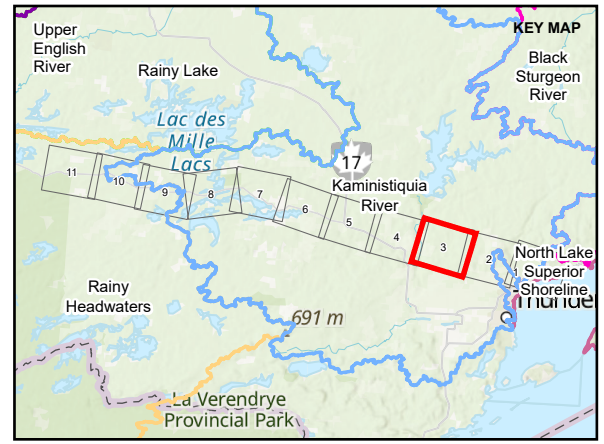
CONSULTANT	YYYY-MM-DD	2022-06-01
	DESIGNED	JL
	PREPARED	MM
	REVIEWED	
	APPROVED	

PROJECT NO.	CONTROL	REV.	FIGURE
20137728	0017	A	1-2

PATH: S:\Client\Hydro One\Waasigan\PROJ\20137728\40_PROJ\20137728_0017_G-0011.aprx PRINTED ON: AT: 10:44:42 AM
 IF THIS MEASUREMENT DOES NOT MATCH WHAT IS SHOWN, THE SHEET SIZE HAS BEEN MODIFIED FROM: ANSI B



- LEGEND**
- ▲ AQUATICS FIELD SITE
 - ▲ ALTERNATE AQUATICS FIELD SITE
 - - - ALTERNATIVE ROUTE 1
 - - - ALTERNATIVE ROUTE 1A
 - - - ALTERNATIVE ROUTE 1B - 1
 - - - ALTERNATIVE ROUTE 1B - 2
 - - - ALTERNATIVE ROUTE 1C
 - LOCAL ROAD
 - SECONDARY HIGHWAY
 - + RAILWAY
 - WATERCOURSE
 - LOCAL STUDY AREA
 - TERTIARY WATERSHED BOUNDARY
 - KAMINISTQUIA RIVER



DRAFT

REFERENCE(S)
 BASE DATA COURTESY OF LAND INFORMATION ONTAIO MNR. IMAGERY COPYRIGHT © ESRI AND ITS LICENSORS. USED UNDER LICENSE, ALL RIGHTS RESERVED.
 PROJECTION: CSRS UTM ZONE 15 DATUM: NAD 83

CLIENT
 HYDRO ONE NETWORKS INC.

PROJECT
 WAASIGAN TRANSMISSION LINE

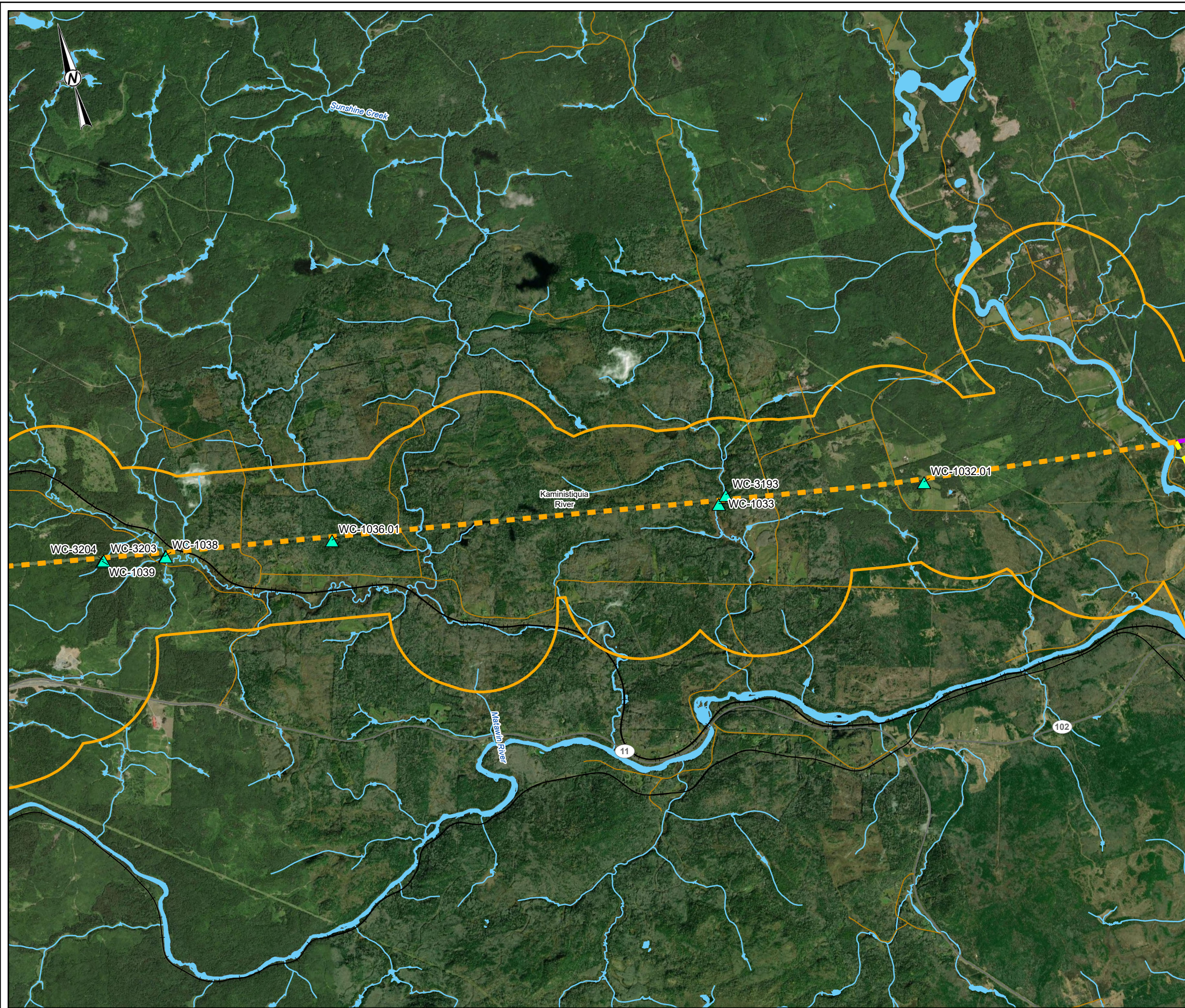
TITLE
 AQUATICS SURVEY LOCATIONS - THUNDER BAY

CONSULTANT	YYYY-MM-DD	2022-06-01
wsp GOLDER	DESIGNED	JL
	PREPARED	MM
	REVIEWED	
	APPROVED	

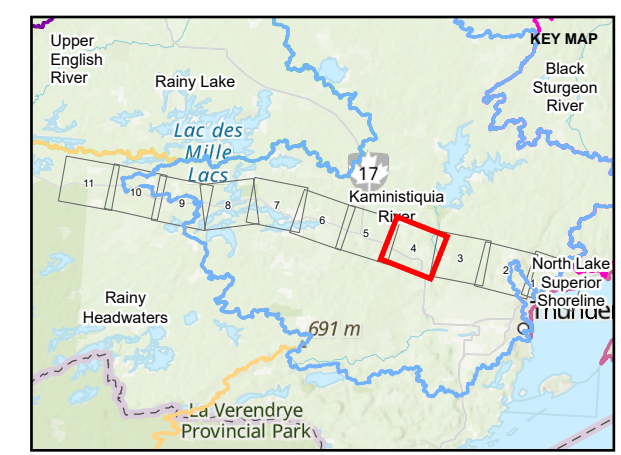
PROJECT NO.	CONTROL	REV.	FIGURE
20137728	0017	A	1-3

PATH: S:\Client\HydroOne\Waasigan\09_PROJ\20137728\0017_Files_Pemba\20137728_0017_G-sswt1.aprx PRINTED ON: AT: 10:44:52 AM

IF THIS MEASUREMENT DOES NOT MATCH WHAT IS SHOWN, THE SHEET SIZE HAS BEEN MODIFIED FROM: ANSI B



- LEGEND**
- ▲ AQUATICS FIELD SITE
 - ▲ ALTERNATE AQUATICS FIELD SITE
 - - - ALTERNATIVE ROUTE 1
 - - - ALTERNATIVE ROUTE 1A
 - - - ALTERNATIVE ROUTE 1B - 1
 - - - ALTERNATIVE ROUTE 1B - 2
 - - - ALTERNATIVE ROUTE 1C
 - LOCAL ROAD
 - SECONDARY HIGHWAY
 - + + + RAILWAY
 - WATERCOURSE
 - LOCAL STUDY AREA
 - TERTIARY WATERSHED BOUNDARY
 - KAMINISTQUIA RIVER



DRAFT

REFERENCE(S)
 BASE DATA COURTESY OF LAND INFORMATION ONTAIRO MNR. IMAGERY COPYRIGHT © ESRI AND ITS LICENSORS. USED UNDER LICENSE, ALL RIGHTS RESERVED.
 PROJECTION: CSRS UTM ZONE 15 DATUM: NAD 83

CLIENT
 HYDRO ONE NETWORKS INC.

PROJECT
 WAASIGAN TRANSMISSION LINE

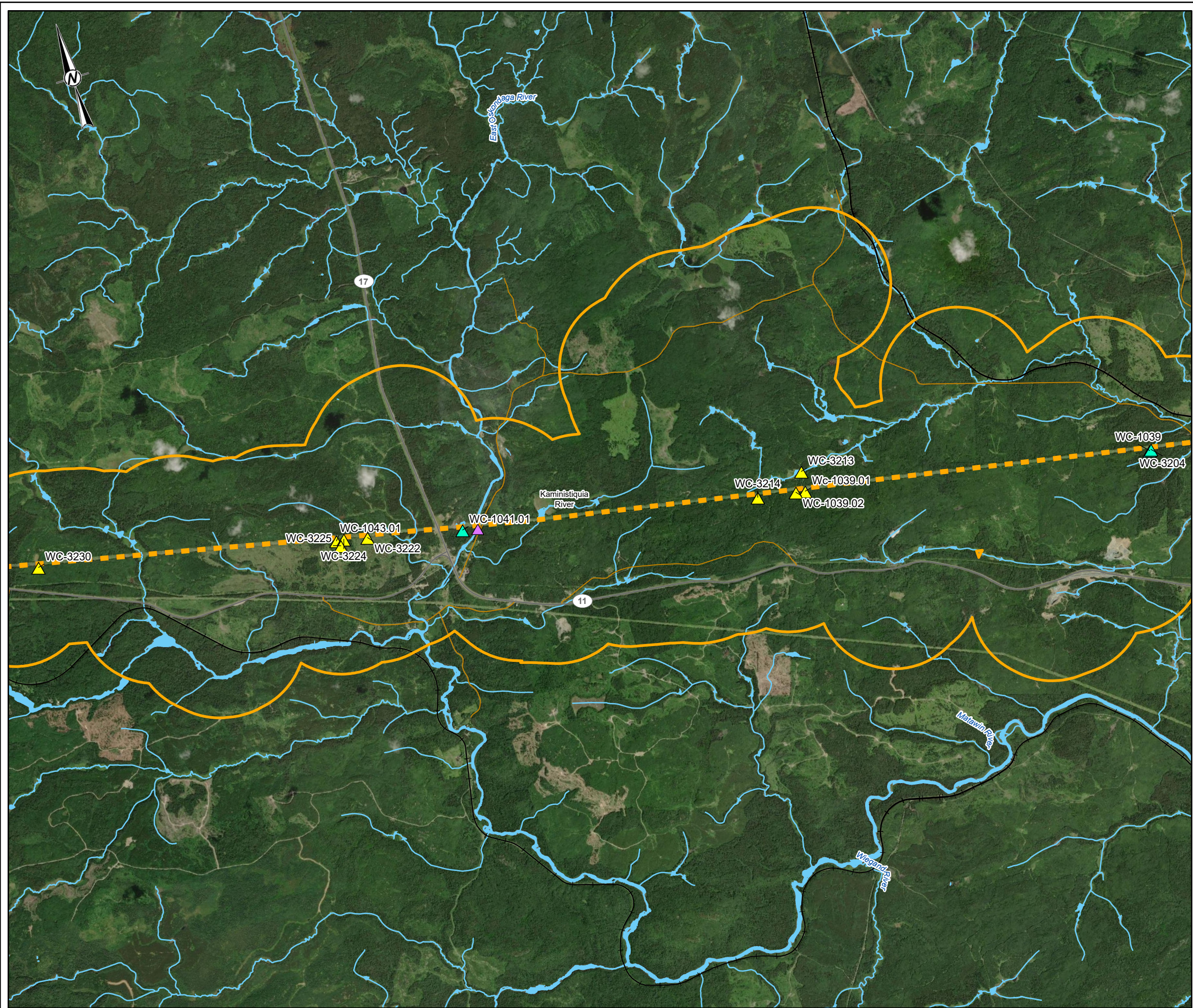
TITLE
AQUATICS SURVEY LOCATIONS - THUNDER BAY

CONSULTANT	YYYY-MM-DD	2022-06-01
wsp GOLDER	DESIGNED	JL
	PREPARED	MM
	REVIEWED	
	APPROVED	

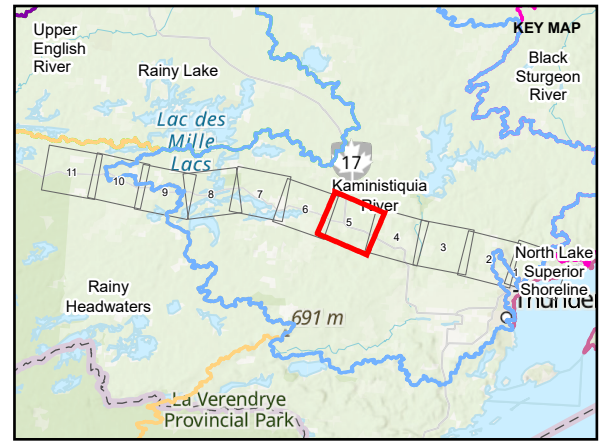
PROJECT NO.	CONTROL	REV.	FIGURE
20137728	0017	A	1-4

PATH: S:\Client\Hydro\Waasigan\09_PROJ\20137728\0017_Fish_Permit\20137728_0017_G-001.dwg, PRINTED ON: AT: 10:45:00 AM

IF THIS MEASUREMENT DOES NOT MATCH WHAT IS SHOWN, THE SHEET SIZE HAS BEEN MODIFIED FROM: ANSI B



- LEGEND**
- ▲ AQUATICS FIELD SITE
 - ▲ ALTERNATE AQUATICS FIELD SITE
 - ▲ SURFACE WATER AND FISH HABITAT ASSESSMENT SITE
 - - - ALTERNATIVE ROUTE 1
 - - - ALTERNATIVE ROUTE 1C
 - LOCAL ROAD
 - SECONDARY HIGHWAY
 - RAILWAY
 - WATERCOURSE
 - LOCAL STUDY AREA
 - TERTIARY WATERSHED BOUNDARY
 - KAMINISTQUIA RIVER



DRAFT

REFERENCE(S)
 BASE DATA COURTESY OF LAND INFORMATION ONTAIRO MNR. IMAGERY COPYRIGHT © ESRI AND ITS LICENSORS. USED UNDER LICENSE, ALL RIGHTS RESERVED.
 PROJECTION: CSRS UTM ZONE 15 DATUM: NAD 83

CLIENT
 HYDRO ONE NETWORKS INC.

PROJECT
 WAASIGAN TRANSMISSION LINE

TITLE
 AQUATICS SURVEY LOCATIONS - THUNDER BAY

CONSULTANT	YYYY-MM-DD	2022-06-01
wsp GOLDER	DESIGNED	JL
	PREPARED	MM
	REVIEWED	
	APPROVED	

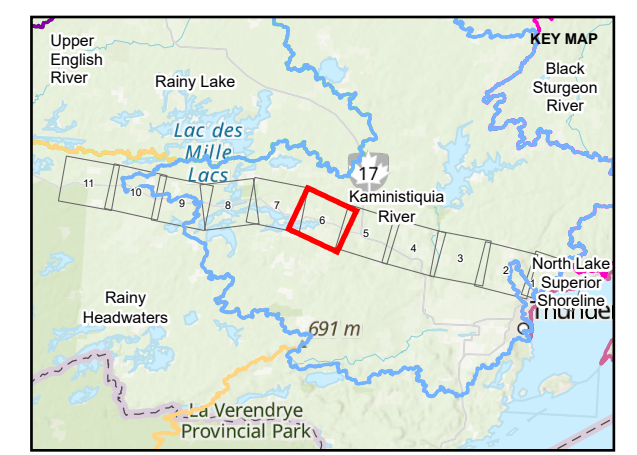
PROJECT NO. 20137728	CONTROL 0017	REV. A	FIGURE 1-5
-------------------------	-----------------	-----------	---------------

PATH: S:\Chemistry\Chem\Waasigan\09_PROJ\20137728\04_PROJ\20137728_0017_G-0001.aprx PRINTED ON: AT: 10:45:11 AM

IF THIS MEASUREMENT DOES NOT MATCH WHAT IS SHOWN, THE SHEET SIZE HAS BEEN MODIFIED FROM: ANSI B



- LEGEND**
- AQUATICS FIELD SITE
 - ALTERNATE AQUATICS FIELD SITE
 - ALTERNATIVE ROUTE 1
 - ALTERNATIVE ROUTE 1C
 - LOCAL ROAD
 - SECONDARY HIGHWAY
 - RAILWAY
 - WATERCOURSE
 - LOCAL STUDY AREA
 - TERTIARY WATERSHED BOUNDARY
 - KAMINISTQUIA RIVER



DRAFT

REFERENCE(S)
 BASE DATA COURTESY OF LAND INFORMATION ONTAIRO MNR. IMAGERY COPYRIGHT © ESRI AND ITS LICENSORS. USED UNDER LICENSE, ALL RIGHTS RESERVED.
 PROJECTION: CSRS UTM ZONE 15 DATUM: NAD 83

CLIENT
 HYDRO ONE NETWORKS INC.

PROJECT
 WAASIGAN TRANSMISSION LINE

TITLE
 AQUATICS SURVEY LOCATIONS - THUNDER BAY

CONSULTANT	YYYY-MM-DD	2022-06-01
	DESIGNED	JL
	PREPARED	MM
	REVIEWED	
	APPROVED	

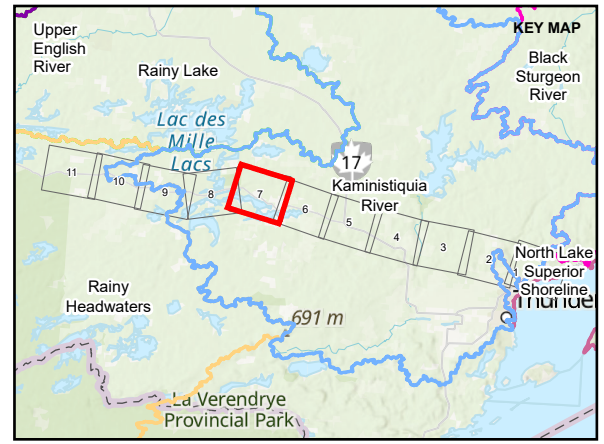
PROJECT NO.	CONTROL	REV.	FIGURE
20137728	0017	A	1-6

PATH: S:\Client\HydroOne\Waasigan\PROJ\20137728\0017_Fish_Permit\20137728_0017_G-0001.aprx PRINTED ON: AT: 10:45:19 AM

IF THIS MEASUREMENT DOES NOT MATCH WHAT IS SHOWN, THE SHEET SIZE HAS BEEN MODIFIED FROM: ANSI B



- LEGEND**
- AQUATICS FIELD SITE
 - ALTERNATIVE ROUTE 1
 - ALTERNATIVE ROUTE 1C
 - LOCAL ROAD
 - SECONDARY HIGHWAY
 - RAILWAY
 - WATERCOURSE
 - LOCAL STUDY AREA
 - TERTIARY WATERSHED BOUNDARY
 - KAMINISTQUIA RIVER



DRAFT

REFERENCE(S)
 BASE DATA COURTESY OF LAND INFORMATION ONTARIO MNR. IMAGERY COPYRIGHT © ESRI AND ITS LICENSORS. USED UNDER LICENSE, ALL RIGHTS RESERVED.
 PROJECTION: CSRS UTM ZONE 15 DATUM: NAD 83

CLIENT
 HYDRO ONE NETWORKS INC.

PROJECT
 WAASIGAN TRANSMISSION LINE

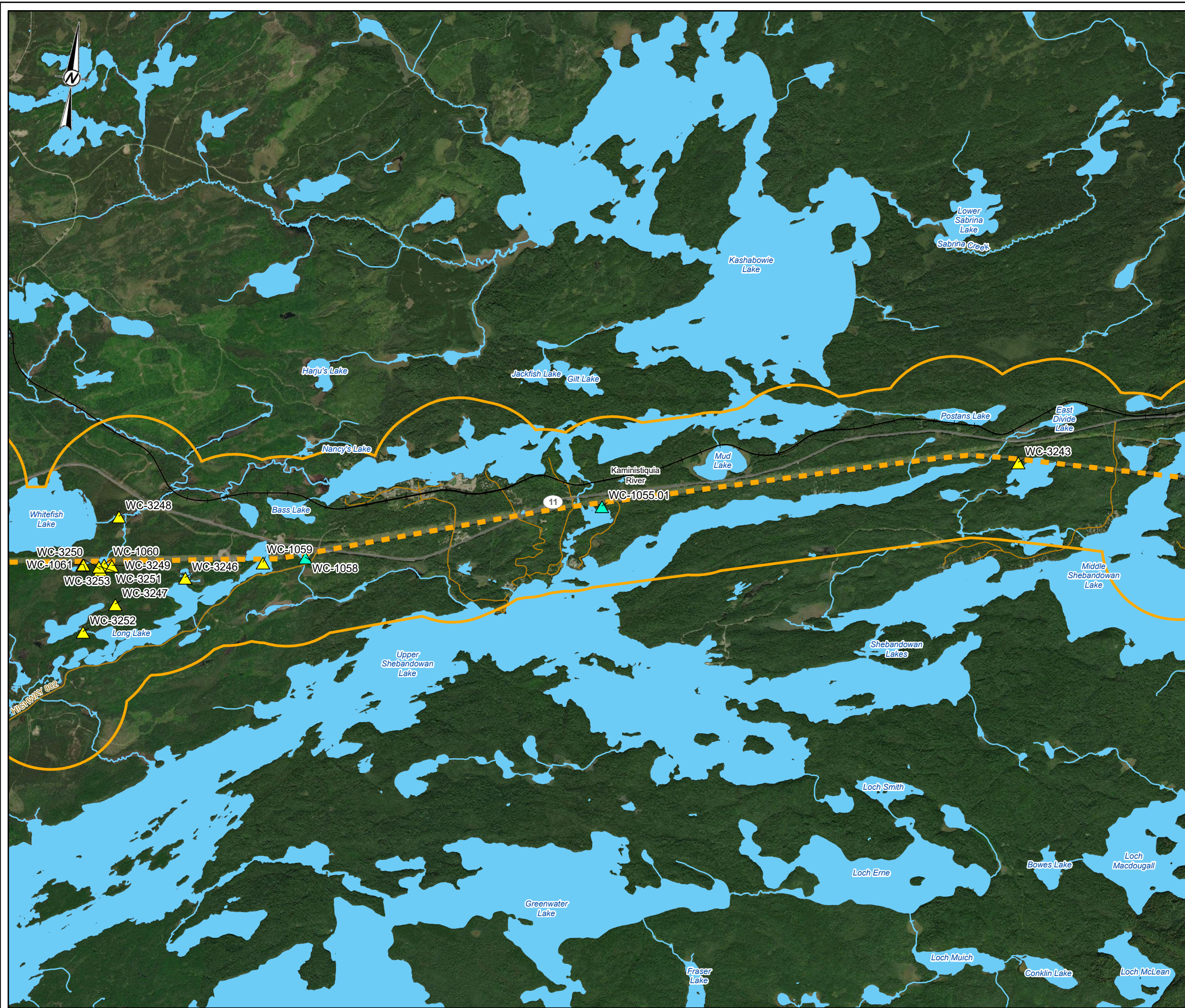
TITLE
AQUATICS SURVEY LOCATIONS - THUNDER BAY

CONSULTANT	YYYY-MM-DD	2022-06-01
	DESIGNED	JL
	PREPARED	MM
	REVIEWED	
	APPROVED	

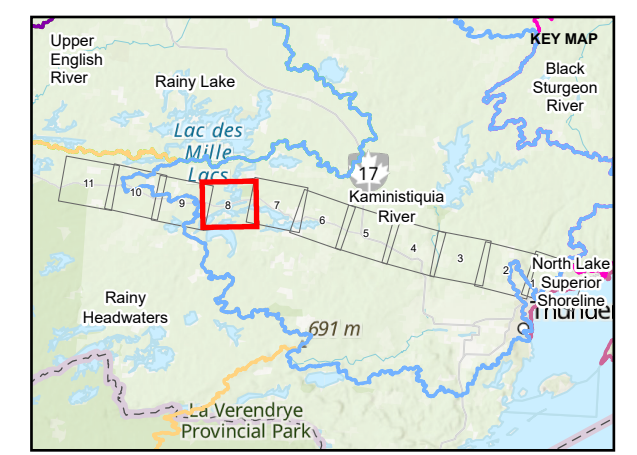
PROJECT NO.	CONTROL	REV.	FIGURE
20137728	0017	A	1-7

PATH: S:\Client\Hydro One\Waasigan\09_PROJ\20137728\06_PROJ\0017_Fin_Pemba\20137728_0017_G-0001.aprx. PRINTED ON: AT: 10:45:29 AM

IF THIS MEASUREMENT DOES NOT MATCH WHAT IS SHOWN, THE SHEET SIZE HAS BEEN MODIFIED FROM: ANSI B



- LEGEND**
- ▲ AQUATICS FIELD SITE
 - ▲ ALTERNATE AQUATICS FIELD SITE
 - - - ALTERNATIVE ROUTE 1
 - - - ALTERNATIVE ROUTE 1C
 - LOCAL ROAD
 - SECONDARY HIGHWAY
 - + RAILWAY
 - WATERCOURSE
 - LOCAL STUDY AREA
 - TERTIARY WATERSHED BOUNDARY
 - KAMINISTQUIA RIVER



DRAFT

REFERENCE(S)
 BASE DATA COURTESY OF LAND INFORMATION ONTAIO MNR. IMAGERY COPYRIGHT © ESRI AND ITS LICENSORS. USED UNDER LICENSE, ALL RIGHTS RESERVED.
 PROJECTION: CSRS UTM ZONE 15 DATUM: NAD 83

CLIENT
 HYDRO ONE NETWORKS INC.

PROJECT
 WAASIGAN TRANSMISSION LINE

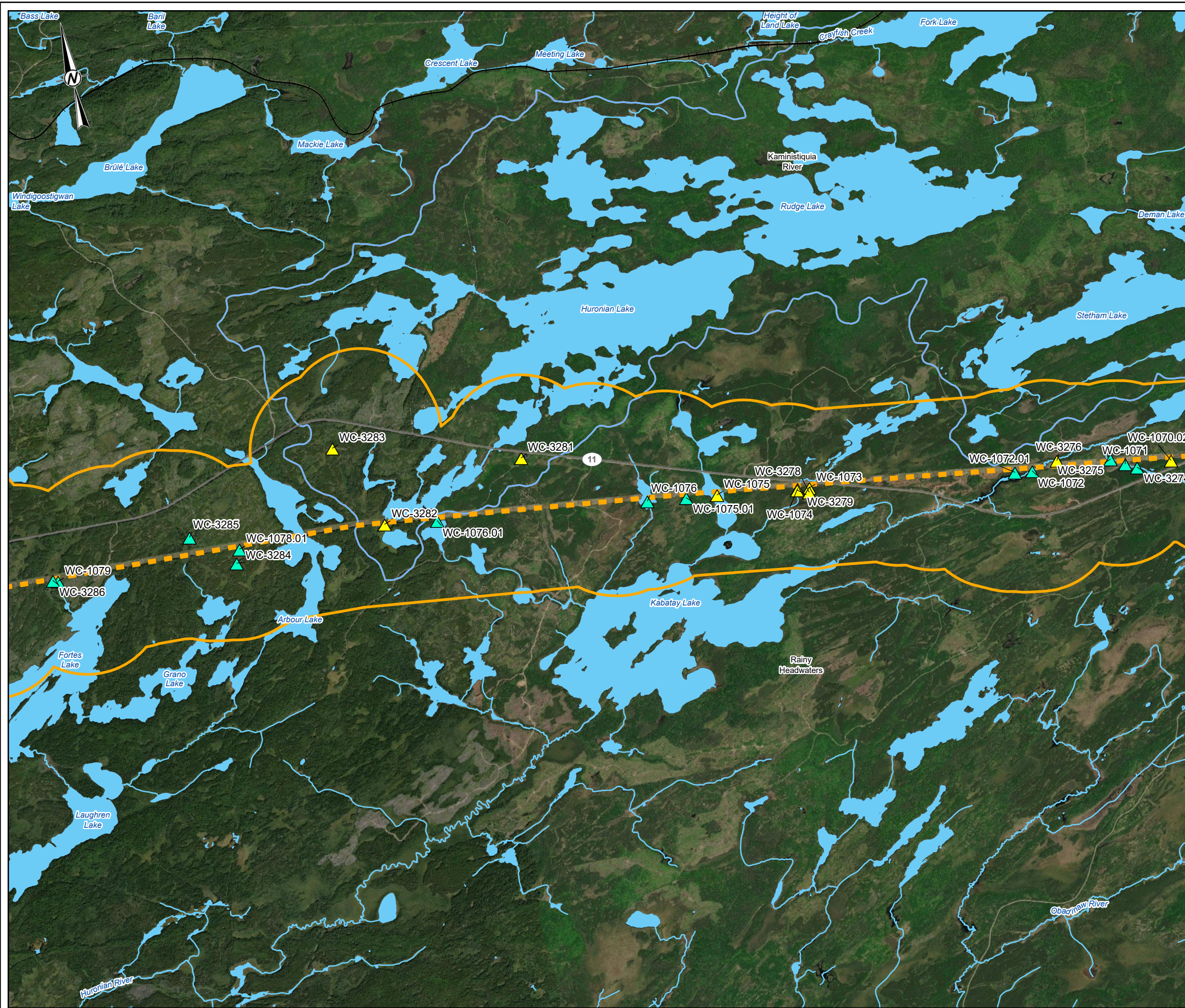
TITLE
 AQUATICS SURVEY LOCATIONS - THUNDER BAY

CONSULTANT	WSP GOLDER
YYYY-MM-DD	2022-06-01
DESIGNED	JL
PREPARED	MM
REVIEWED	
APPROVED	

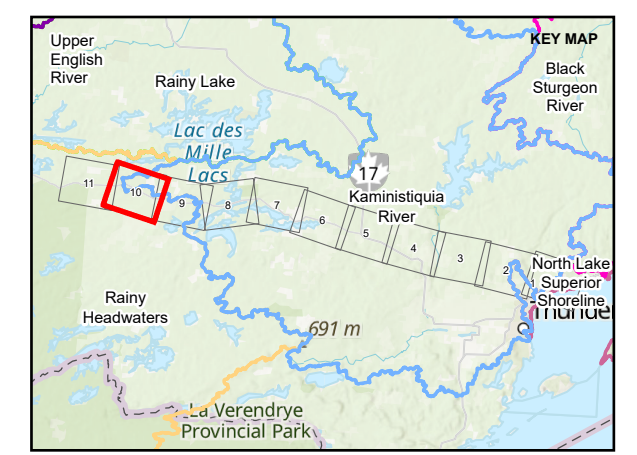
PROJECT NO.	CONTROL	REV.	FIGURE
20137728	0017	A	1-8

PATH: S:\Client\HydroOne\Waasigan\09_PROJ\20137728\06_PROJ\0017_Files_Pemba\20137728_0017_G-0011.apr. PRINTED ON: AT: 10:45:38 AM

IF THIS MEASUREMENT DOES NOT MATCH WHAT IS SHOWN, THE SHEET SIZE HAS BEEN MODIFIED FROM: ANSI B



- LEGEND**
- ▲ AQUATICS FIELD SITE
 - ▲ ALTERNATE AQUATICS FIELD SITE
 - ALTERNATIVE ROUTE 1
 - ALTERNATIVE ROUTE 1C
 - SECONDARY HIGHWAY
 - RAILWAY
 - WATERCOURSE
 - LOCAL STUDY AREA
 - TERTIARY WATERSHED BOUNDARY
 - KAMINISTQUIA RIVER
 - RAINY HEADWATERS



REFERENCE(S)
 BASE DATA COURTESY OF LAND INFORMATION ONTARIO MNR. IMAGERY COPYRIGHT © ESRI AND ITS LICENSORS. USED UNDER LICENSE, ALL RIGHTS RESERVED.
 PROJECTION: CSRS UTM ZONE 15 DATUM: NAD 83

CLIENT
 HYDRO ONE NETWORKS INC.

PROJECT
 WAASIGAN TRANSMISSION LINE

TITLE
AQUATICS SURVEY LOCATIONS - THUNDER BAY

CONSULTANT	YYYY-MM-DD	2022-06-01
wsp GOLDER	DESIGNED	JL
	PREPARED	MM
	REVIEWED	
	APPROVED	

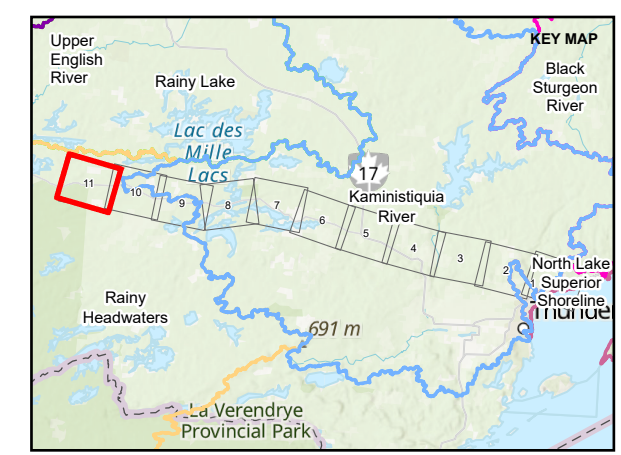
PROJECT NO.	CONTROL	REV.	FIGURE
20137728	0017	A	1-10

PATH: S:\Chemistry\Chem\Waasigan\09_PROJ\20137728\0017_Fish_Permit\20137728_0017_G-0001.aprx PRINTED ON: AT: 10:45:56 AM

IF THIS MEASUREMENT DOES NOT MATCH WHAT IS SHOWN, THE SHEET SIZE HAS BEEN MODIFIED FROM: ANSI B



- LEGEND**
- ▲ AQUATICS FIELD SITE
 - ▲ ALTERNATE AQUATICS FIELD SITE
 - - - ALTERNATIVE ROUTE 1
 - - - ALTERNATIVE ROUTE 1C
 - SECONDARY HIGHWAY
 - + — RAILWAY
 - WATERCOURSE
 - LOCAL STUDY AREA
 - TERTIARY WATERSHED BOUNDARY
 - RAINY HEADWATERS



DRAFT

REFERENCE(S)
 BASE DATA COURTESY OF LAND INFORMATION ONTARIO MNR. IMAGERY COPYRIGHT © ESRI AND ITS LICENSORS. USED UNDER LICENSE, ALL RIGHTS RESERVED.
 PROJECTION: CSRS UTM ZONE 15 DATUM: NAD 83

CLIENT
 HYDRO ONE NETWORKS INC.

PROJECT
 WAASIGAN TRANSMISSION LINE

TITLE
AQUATICS SURVEY LOCATIONS - THUNDER BAY

CONSULTANT	YYYY-MM-DD	2022-06-01
	DESIGNED	JL
	PREPARED	MM
	REVIEWED	
	APPROVED	

PROJECT NO.	CONTROL	REV.	FIGURE
20137728	0017	A	1-11

PATH: S:\Client\HydroOne\Waasigan\09_PROJ\20137728\04_PROJ\0017_Files_Permit\20137728_0017_G-0011.aprx PRINTED ON: AT: 10:46:05 AM

IF THIS MEASUREMENT DOES NOT MATCH WHAT IS SHOWN, THE SHEET SIZE HAS BEEN MODIFIED FROM: ANSI B