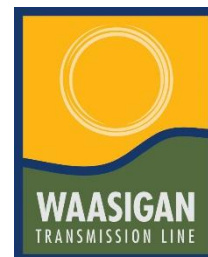


PROJECT NOTICE

WAASIGAN TRANSMISSION LINE - AQUATICS SURVEYS (SURFACE WATER, FISH AND FISH HABITAT) FORT FRANCES DISTRICT



JUNE 10, 2022

This notice provides information on the upcoming aquatics field surveys, including surface water, fish and fish habitat surveys, planned in the Atikokan area (specifically within the Ministry of Northern Development, Mines, Natural Resources and Forestry [NDMNRF] Fort Frances District).

These surveys will require a Licence to Collect Fish for Scientific Purposes from NDMNRF before work begins. NDMNRF will be providing additional notification letters to Indigenous communities before issuing these permits.

Why is a Licence to Collect Fish for Scientific Purposes required?

Studies or work that involve collecting or moving fish require a licence from NDMNRF. In this case, we are conducting baseline fish studies to support the environmental assessment. Fish captured are used for data collection only (e.g., species identification, weight and measurement) and will be released.

SURVEY INFORMATION

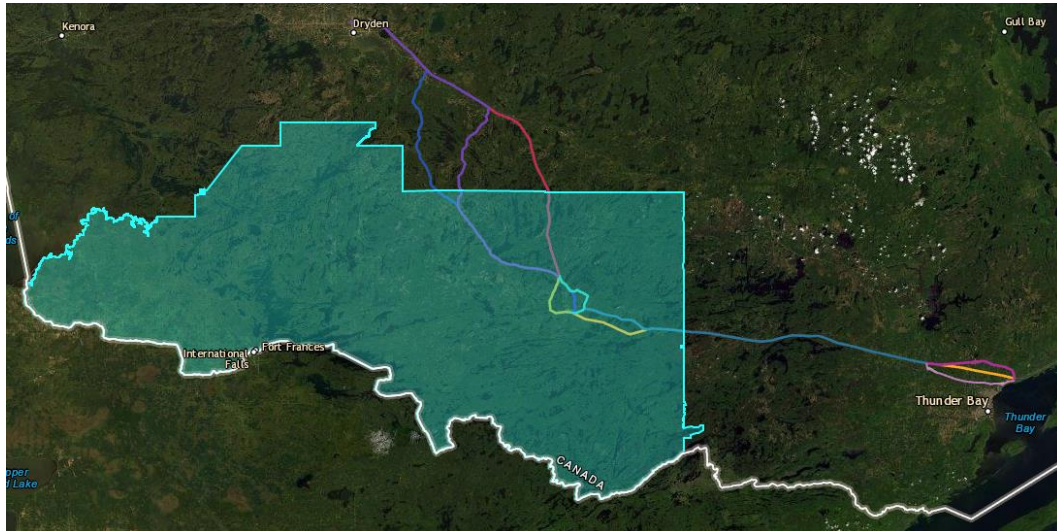
The table below provides information on the surface water, fish and fish habitat surveys:

	SURFACE WATER, FISH AND FISH HABITAT
WHY are we doing the surveys?	<ul style="list-style-type: none"> To characterize existing watercourses and water bodies including fish habitat and fish communities.
WHAT activities are involved?	<ul style="list-style-type: none"> Field crews will visit watercourses and waterbodies potentially crossed by the Project to complete: <ul style="list-style-type: none"> Fish Habitat Assessments (e.g., habitat type, identify special features, etc.); Fish Community Surveys (i.e., backpack electrofishing); and Surface Water Assessments (e.g., stream flow measurements, topographic information, and water quality measurements).
WHEN will the surveys happen?	<ul style="list-style-type: none"> Surveys will take place throughout the Project area between July 2 and September 30, 2022. The start of the field surveys is dependent on receiving the Licence to Collect Fish for Scientific Purposes from the NDMNRF.

SURFACE WATER, FISH AND FISH HABITAT

WHERE
will the
survey
take
place?

- Surveys will take place at watercourses and waterbodies of various sizes and types potentially crossed by the Project with a focus on sites that do not have existing baseline information, as requested by the NDMNRF.
- This notice includes survey locations planned within the NDMNRF Fort Frances District (refer to map below).



PROPOSED SURVEY LOCATIONS

The proposed survey locations can be viewed online using a Webviewer at the link below.

We welcome any feedback on the proposed survey locations. Maps of the survey locations are also available for download at the link below. Comments can be made in the field map book and sent back to us via email.

[CLICK HERE TO VISIT THE WEBVIEWER FOR FIELD SURVEY LOCATIONS](#)

[CLICK HERE TO DOWNLOAD THE FIELD MAP BOOK](#)

If there is any information regarding the locations or timing of the proposed surveys that you would like us to be aware of, please contact us using the contact details below. **Comments would be appreciated by June 22, 2022** so that they can be considered prior to the start of field work.

INDIGENOUS PARTICIPATION

Golder is looking to hire additional Indigenous field crew members, and communities can also participate by sending community-hired field monitors. There is currently capacity for additional community members within all crews. Field work schedules will be shared regularly that include the types of surveys being conducted, number of crews, days and approximate hours, and geographic area. As schedules are subject to change, please confirm with the Project team prior to making arrangements for community monitors to join a crew.

To ensure community-hired field monitors are protected, **Hydro One requires proof of the following:**

- Property damage and public liability insurance coverage; and
- Workplace Safety and Insurance Board (WSIB) registration.

If you have any questions or concerns pertaining to these requirements, please contact us so that we can work together to ensure there are no barriers to Indigenous community participation in these field surveys.

Indigenous field crew members hired directly by Golder will be covered under Golder's WSIB and liability insurance. This hiring process can take approximately 1 to 2 weeks.

Another option for participation are site visits where members of your community can join a crew in the field to discuss the work being completed. If there is any interest in this approach, please let us know and we can work together to plan a visit.

CONTACT INFORMATION

We encourage you to ask questions and provide comments on the proposed field work. If you are interested in participation opportunities or have comments on the proposed field work, please contact Golder's Environmental Assessment Specialist, Heather Kyer, at 613-314-8473 or heather.kyer@wsp.com.