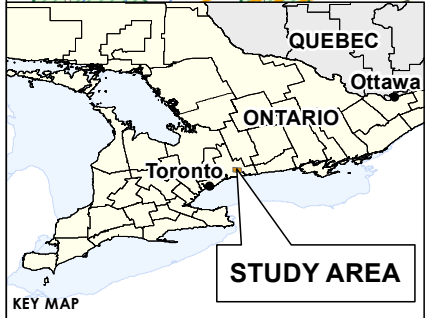
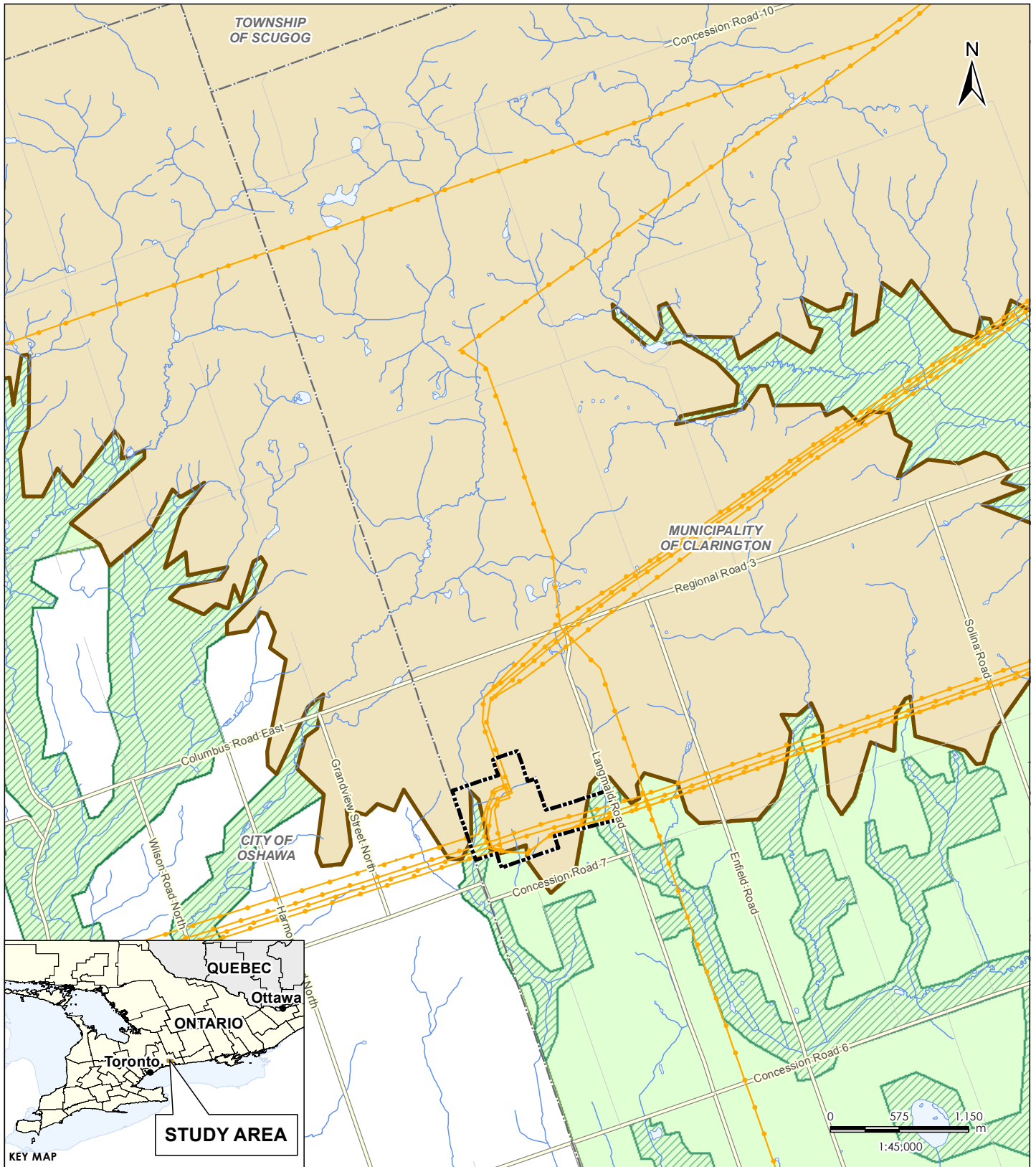


\\C:\1220-102\01609\active\60960745\drawing\MXD\Hydrogeology\Baseline_HydroG_Conditions_Addendum_2\160900764_BHA2_Fig01_SiteLocation.mxd
 Revised: 2015-09-02 By: pmoser



September 2015
160900764



- Legend**
- Project Area
 - Municipal Boundary
 - Utility Line
 - Major Road
 - Local Road
 - Waterbody
 - Watercourse
 - Oak Ridges Moraine
 - Greenbelt - Natural Heritage System
 - Greenbelt - Protected Countryside

- Notes**
- Coordinate System: NAD 1983 UTM Zone 17N
 - Base features produced under license with the Ontario Ministry of Natural Resources © Queen's Printer for Ontario, 2012.

Client/Project
 Hydro One
 Pre-Station Construction GW and SW
 Baseline Conditions Report Addendum #2
 Clarington, Ontario

Figure No.
1

Title
Project Location



- Legend**
- Project Area
 - Station Site
 - Borehole (Stantec, 2015)
 - Monitoring Well (Stantec, 2013, 2015)
 - Piezometer (Stantec, 2013)
 - Test Pit (Stantec, 2013)
 - Surface Water Monitoring (Stantec, 2013)
 - Monitoring Well (EXP, 2012)
 - Monitoring Well (Inspec-Sol, 2012) - Abandoned
 - Borehole (Inspec-Sol, 2012)
 - Borehole (EXP, 2012)
 - Cross-Section Location
 - Topographic Contour (mAMSL)
 - Permanent Discharge from Drainage System
 - Permanent Discharge from Toe Drain
 - Cut Slope
 - Approximate location of Temporary Frac Tanks
 - Watercourse
 - New Infrastructure
 - Wetland

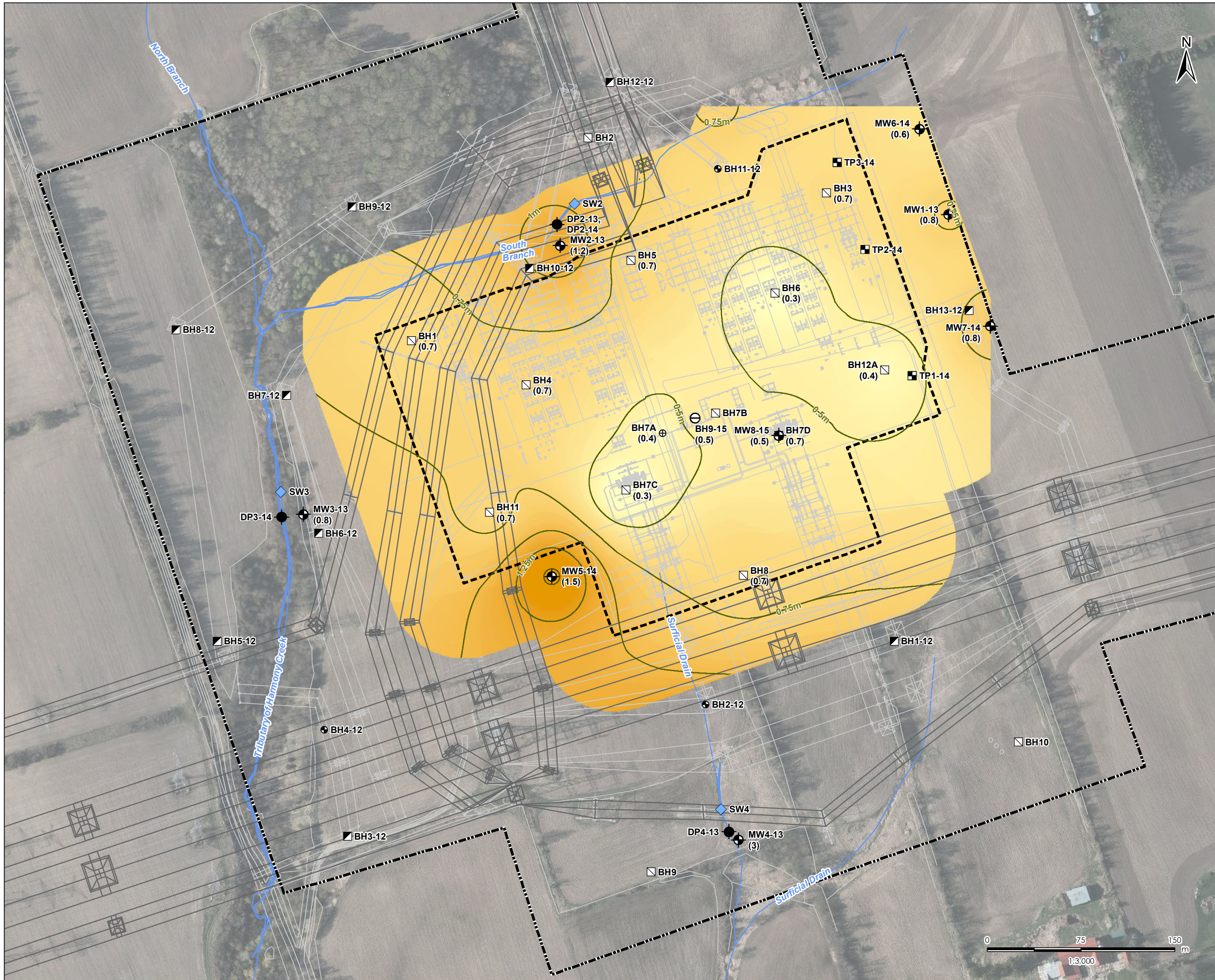
- Notes**
1. Coordinate System: NAD 1983 UTM Zone 17N
 2. Base features produced under license with the Ontario Ministry of Natural Resources © Queen's Printer for Ontario, 2012.
 3. Orthomagey © First Base Solutions, 2012.
 4. Topography derived from the MNR Digital Elevation Model - Version 2.0.0 - Provincial Tiled Dataset (DEM) © Queen's Printer for Ontario, 2006.
 5. Wetland boundary as delineated by Stantec (Natural Heritage Existing Conditions Report, 2012).

Client/Project
Hydro One
Pre-Station Construction GW and SW
Baseline Conditions Report Addendum #2
Clarington, Ontario

Figure No.
2

Title
Site Location Plan

\\Ca11220-102\01\609\active\60960745\drawing\WMD\Hydrogeology\Baseline_HydroG_Conditions_Addendum_2\160900764_BHA2_Fig02_SitePlan.mxd
 Revised: 2015-09-02 By: pmose



Legend

- Project Area
- Station Site
- Borehole (Stantec, 2015)
- Monitoring Well (Stantec, 2013, 2015)
- Piezometer (Stantec, 2013)
- Test Pit (Stantec, 2013)
- Surface Water Monitoring (Stantec, 2013)
- Monitoring Well (EXP, 2012)
- Monitoring Well (Inspec-Sol, 2012) - Abandoned
- Borehole (Inspec-Sol, 2012)
- Borehole (EXP, 2012)
- (0.5) Thickness of Surficial Sand Unit (m)
- Watercourse
- New Infrastructure
- Surficial Sand Isopach (0.25 m)

Surficial Sand Isopach (mbgs)

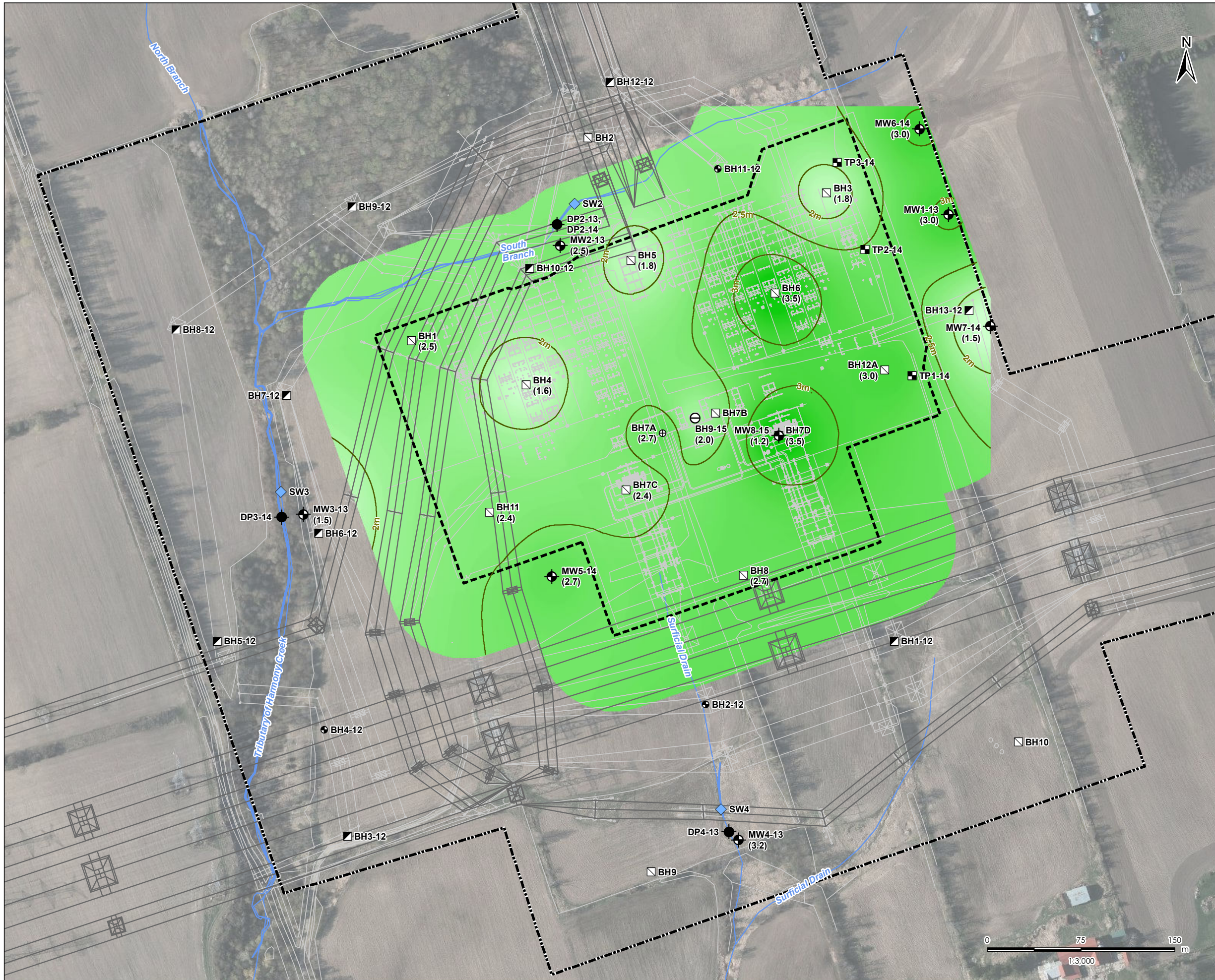
- High : 1.5
- Low : 0.0

- Notes**
1. Coordinate System: NAD 1983 UTM Zone 17N
 2. Base features produced under license with the Ontario Ministry of Natural Resources © Queen's Printer for Ontario, 2012.
 3. Orthomagery © First Base Solutions, 2012.
 4. Topography derived from the MNR Digital Elevation Model - Version 2.0.0 - Provincial Tiled Dataset (DEM) © Queen's Printer for Ontario, 2006.
 5. Wetland boundary as delineated by Stantec (Natural Heritage Existing Conditions Report, 2012).
- September 2015
160900745

Client/Project
Hydro One
Pre-Station Construction GW and SW
Baseline Conditions Report Addendum #2
Clarington, Ontario

Figure No.
3
Title
Surficial Sand Isopach Map

\\Ca11220-102\01609\active\60960745\drawing\WMD\Hydrogeology\Baseline_HydroG_Conditions_Addendum_2\160900745_BHA2_Fig03_surficialSand_isopach.mxd
 Revised: 2015-09-02 By: pmoser



Legend

- Project Area
- Station Site
- Borehole (Stantec, 2015)
- Monitoring Well (Stantec, 2013, 2015)
- Piezometer (Stantec, 2013)
- Test Pit (Stantec, 2013)
- Surface Water Monitoring (Stantec, 2013)
- Monitoring Well (EXP, 2012)
- Monitoring Well (Inspec-Sol, 2012) - Abandoned
- Borehole (Inspec-Sol, 2012)
- Borehole (EXP, 2012)
- (1.5) Thickness of Combined Surficial Sand and Weathered Till Units (m)
- Watercourse
- New Infrastructure
- Isopach (0.5 m)

Isopach (mbgs)

- High : 3.5
- Low : 1.5

- Notes**
1. Coordinate System: NAD 1983 UTM Zone 17N
 2. Base features produced under license with the Ontario Ministry of Natural Resources © Queen's Printer for Ontario, 2012.
 3. Orthoimagery © First Base Solutions, 2012.
 4. Topography derived from the MNR Digital Elevation Model - Version 2.0.0 - Provincial Tiled Dataset (DEM) © Queen's Printer for Ontario, 2006.
 5. Wetland boundary as delineated by Stantec (Natural Heritage Existing Conditions Report, 2012).
- September 2015
160900745

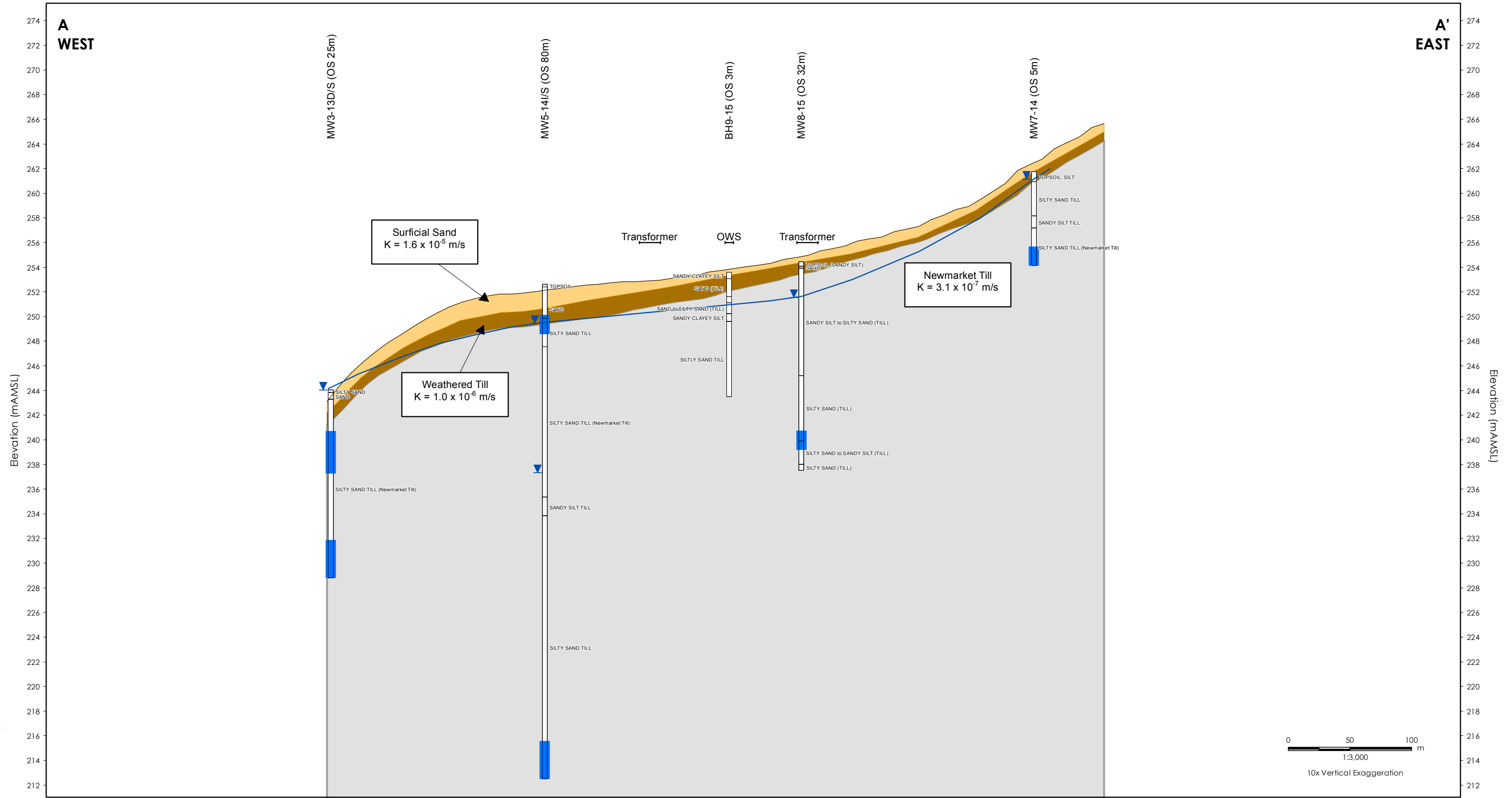
Client/Project
Hydro One
Pre-Station Construction GW and SW
Baseline Conditions Report Addendum #2
Clarington, Ontario

Figure No.
4

Title
Combined Surficial Sand and Weathered Till Isopach Map

\\Ca11220-102\01\609\active\60960745\drawing\WMD\Hydrogeology\Baseline_HydroG_Conditions_Addendum_2\160900745_BHA2_Fig04_Comb_SurficialSand_WeatheredTill_Isopach.mxd
 Revised: 2015-09-02 By: pmoser

\\C:\d1\220-102\01\609\active\60960745\drawing\X\XD\Hydrogeology\Baseline_HydroG_Conditions_Addendum_2\160900744_BHA2_Fig05_xsecAA.mxd
 Revised: 2015-09-02 By: pmcseer



Notes
1. Notes

Legend

- Well ID (Offset)
- Stratigraphy
- Water Level
- Well Screen
- Water Levels
- Water Table
- Well Screen
- Surficial Sand
- Weathered Till
- Newmarket Till

Client/Project
Hydro One
Pre-Station Construction GW and SW
Baseline Conditions Report Addendum #2
Clarington, Ontario

Figure No.
5

Title
**Clarington TS - Station Area
Cross-Section A - A'**

September 2015
160960745

- Legend**
- Project Area
 - Station Site
 - Borehole (Stantec, 2015)
 - Monitoring Well (Stantec, 2013, 2015)
 - Piezometer (Stantec, 2013)
 - Test Pit (Stantec, 2013)
 - Surface Water Monitoring (Stantec, 2013)
 - Monitoring Well (EXP, 2012)
 - Monitoring Well (Inspec-Sol, 2012) - Abandoned
 - Borehole (Inspec-Sol, 2012)
 - Borehole (EXP, 2012)
 - Private Well Monitoring Area
 - Discharge Boundary
 - Topographic Contour (mAMSL)
 - Watercourse
 - 250.1 Surface Water Elevation (mAMSL)
 - 250.2 Groundwater Elevation (mAMSL)
 - Interpreted Groundwater Contour - Shallow Overburden (mAMSL)
 - Groundwater Flow Direction
 - Wetland

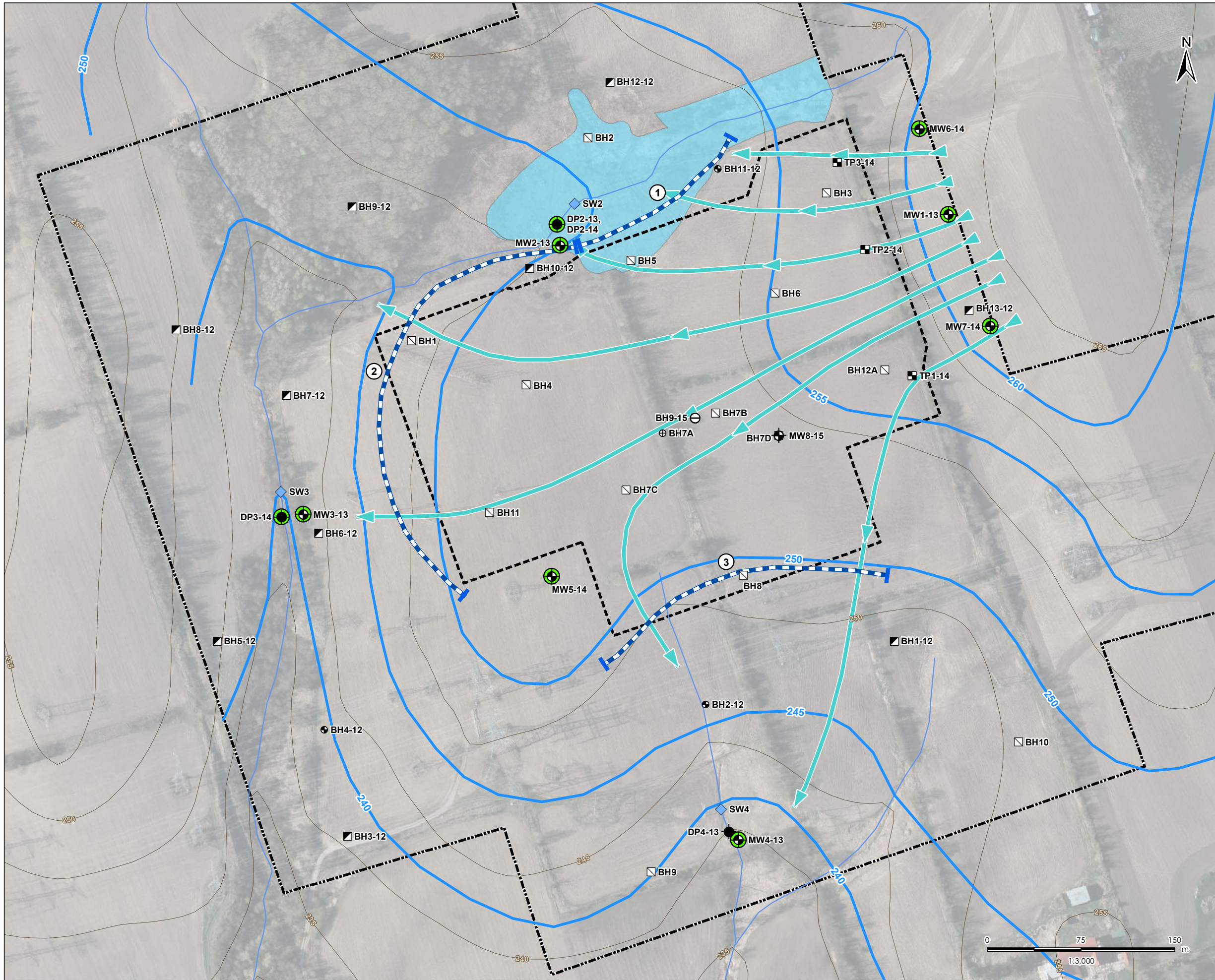
- Notes**
1. Coordinate System: NAD 1983 UTM Zone 17N
 2. Base features produced under license with the Ontario Ministry of Natural Resources © Queen's Printer for Ontario, 2013.
 3. Orthoimagery © First Base Solutions, 2012.
 4. Water level elevation data for October 1, 2014 with the exception of MW5-14S, MW6-14 and MW7-14 from October 8, 2014.

September 2015
160900745

Client/Project
Hydro One
Pre-Station Construction GW and SW
Baseline Conditions Report Addendum #2
Clarington, Ontario

Figure No.
6

Title
**Interpreted Pre-Construction
Shallow Groundwater
Flow Map**



\\C:\1220-102\01\009\active\60960745\drawing\MXD\Hydrogeology\Baseline_HydroG_Conditions_Addendum_2\160900745_BHA2_Fig06_PreConstructionOverburden.mxd
 Revised: 2015-09-02 By: pmoser

Figure 7 - Groundwater Drawdown at 1 Year

Distance from Edge of Excavation (m)

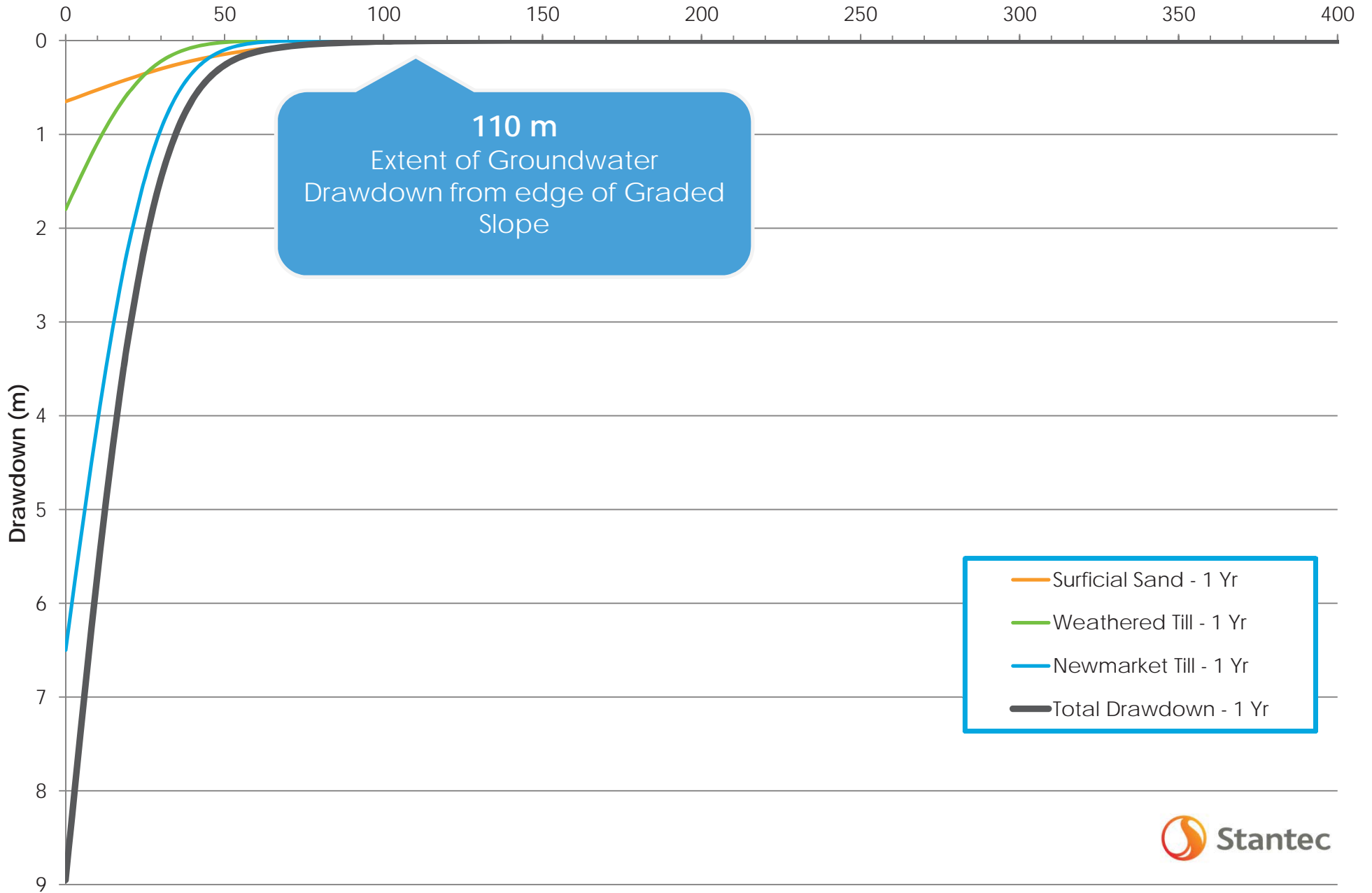


Figure 8 - Groundwater Drawdown at 10 Years

Distance from Edge of Excavation (m)

