

Centennial Transformer Station and Line Project

Notice of Commencement for Class Environmental Assessment

August 2023

Hydro One is committed to energizing life for communities, people and businesses across the province. As industry and businesses grow across southwestern Ontario, so does the need for safe and reliable power.

Earlier this year, Volkswagen announced that its subsidiary, PowerCo SE, will establish an electric vehicle battery manufacturing facility in the City of St. Thomas. To energize the new facility, Hydro One is initiating a Class Environmental Assessment (Class EA) to build new electrical infrastructure on both Hydro One and city property. This includes:

- Building a new transformer station (TS) within St. Thomas' new industrial subdivision.
- Constructing an approximately 2 kilometer 230- kilovolt (kV) double-circuit transmission line between the new TS and the existing Edgeware TS located in the city near Highbury Avenue and Edgeware Line.

On the reverse side of this notice, you can find a map that identifies the location of the proposed new transformer station and transmission line route.

Planning process

Minimizing the environmental effects of our projects and operations is important to us. The planning of this project will follow the "Class Environmental Assessment for Minor Transmission Facilities (2022)" (Class EA for MTF), established in accordance with the *Ontario Environmental Assessment Act*. This planning process applies to transmission infrastructure projects that are carried out routinely and have predictable environmental effects that can be readily managed ([HydroOne.com/ClassEA](https://www.hydroone.com/classEA)).

Within the Class EA for MTF there are two levels of assessment associated with the size of the project and potential environmental effects. These include: i) Screening Process (streamlined), and ii) Full Class EA Process. Based on the examples provided in the Class EA document, it is anticipated that this project will follow the Screening Process subject to consultation activities and satisfying the applicable 16 screening criteria. For more information, please visit [HydroOne.com/ClassEAScreeningProjects](https://www.hydroone.com/ClassEAScreeningProjects).

Once the Class EA process is successfully completed, construction is anticipated to commence early 2024 to meet the facility's required in-service date in late-2025.



See reverse for map



We'd like to hear from you

Your input is important to us. Hearing and learning from Indigenous communities, residents, businesses, government agencies, and interest groups is a key part of the planning process. For any comments on the project, we would welcome your feedback by **September 29, 2023**, and encourage you to contact us at:



1.877.345.6799

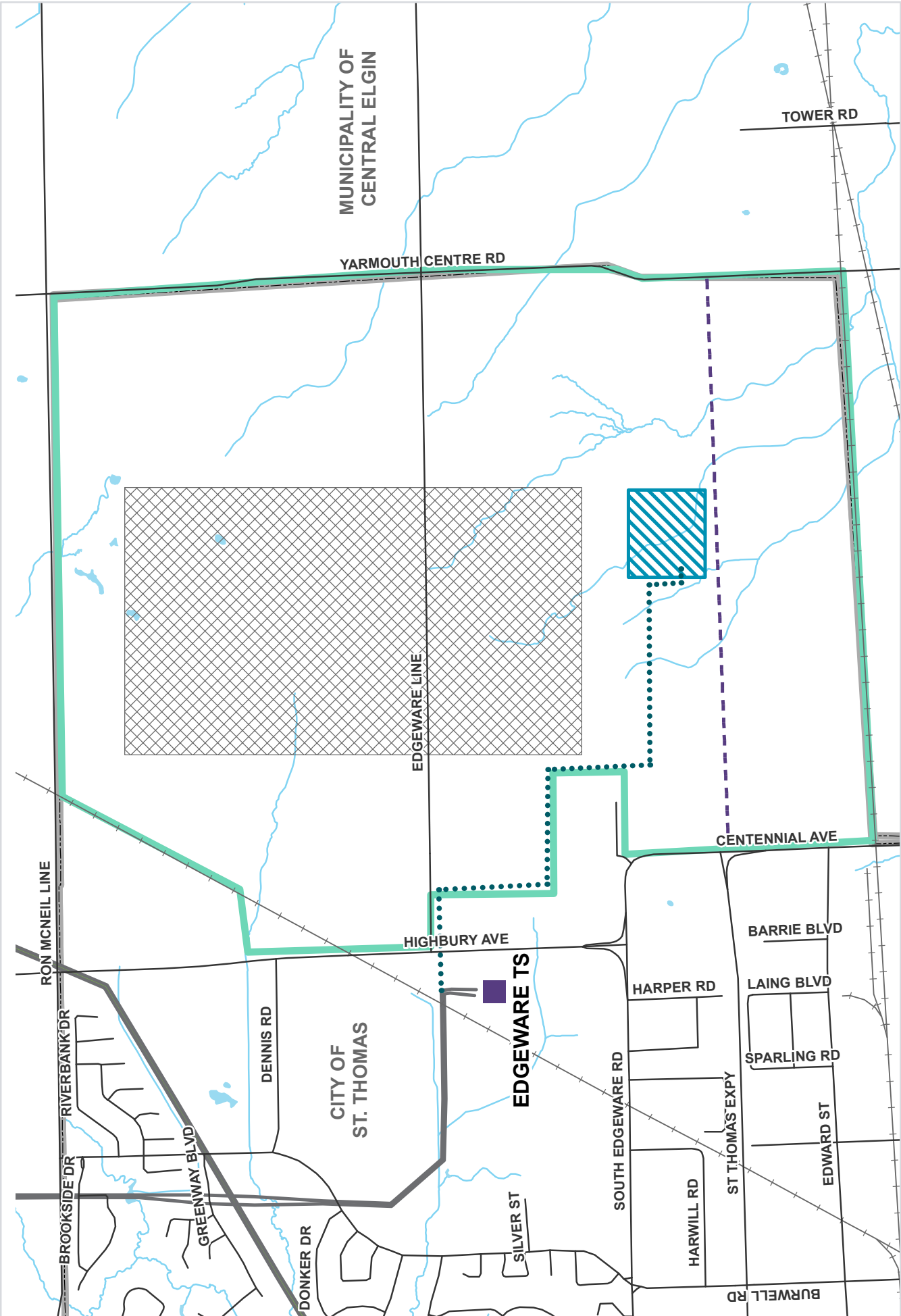


Community.Relations@HydroOne.com

Freedom of Information and Protection of Privacy Act

All personal information included in a submission – such as name, address, telephone number and property location – is collected, maintained and disclosed by the Ministry of the Environment, Conservation and Parks for the purpose of transparency and consultation. The information is collected under the authority of the *Environmental Assessment Act* or is collected and maintained for the purpose of creating a record that is available to the general public as described in s. 37 of the *Freedom of Information and Protection of Privacy Act*. Personal information you submit will become part of a public record that is available to the general public unless you request that your personal information remain confidential. For more information, please contact the Ministry of the Environment, Conservation and Parks' Freedom of Information and Privacy Coordinator at 416-314-4075 or Foi.mecp@ontario.ca.

[HydroOne.com/Centennial](https://www.hydroone.com/Centennial)



Centennial Transformer Station and Line Project

Scale: 1:18,000

0 300 600 m

<ul style="list-style-type: none"> Existing Transmission Line Existing Station Proposed New 230 kV Transmission Line Proposed Station 	<ul style="list-style-type: none"> Industrial Site Major Arterial Roadway Municipal Boundary Approx Location of Proposed Facility 	<ul style="list-style-type: none"> Road Railway Watercourse
---	---	---