



Community Notice

Wood Pole Replacement

Dear Resident,

September 30, 2019

I am writing you to let you know that Hydro One Networks Inc. (Hydro One) is proposing to refurbish approximately 10 structures along the existing 230 kilovolt (kV) transmission line (Circuit X27A). The project area is located along the transmission line from the Township of Sables-Spanish Rivers to the Town of Spanish. The maps provided show an overview of the entire project area and a local view of the structures to be replaced in your community.

This type of project is considered routine maintenance work with relatively minor effects, and is subject to the Class Environmental Assessment (EA) for Minor Transmission Facilities (Hydro One, 2016), in accordance with the Ontario *Environmental Assessment Act*. The Class EA is a streamlined planning process that has proven effective in ensuring minor transmission projects that have a predictable range of effects have feasible environmental mitigation and/or protection measures in place. The Class EA Process contains screening provisions that may apply to this project.

Contingent on the outcome of the Class EA, the replacement of wood poles may begin as early as January 2020 and be completed by the end of 2020. If you would like to provide feedback about this work, please contact us by October 30, 2019. If there are any updates to the project information provided, I will ensure you are promptly informed.

As per the request of the Minister of the Environment, Conservation and Parks, information regarding the *Freedom of Information and Protection of Privacy Act* is included below.

Contact Us!



For more information and/or to provide feedback, please contact:

Eryn Brown, Communication Services Officer

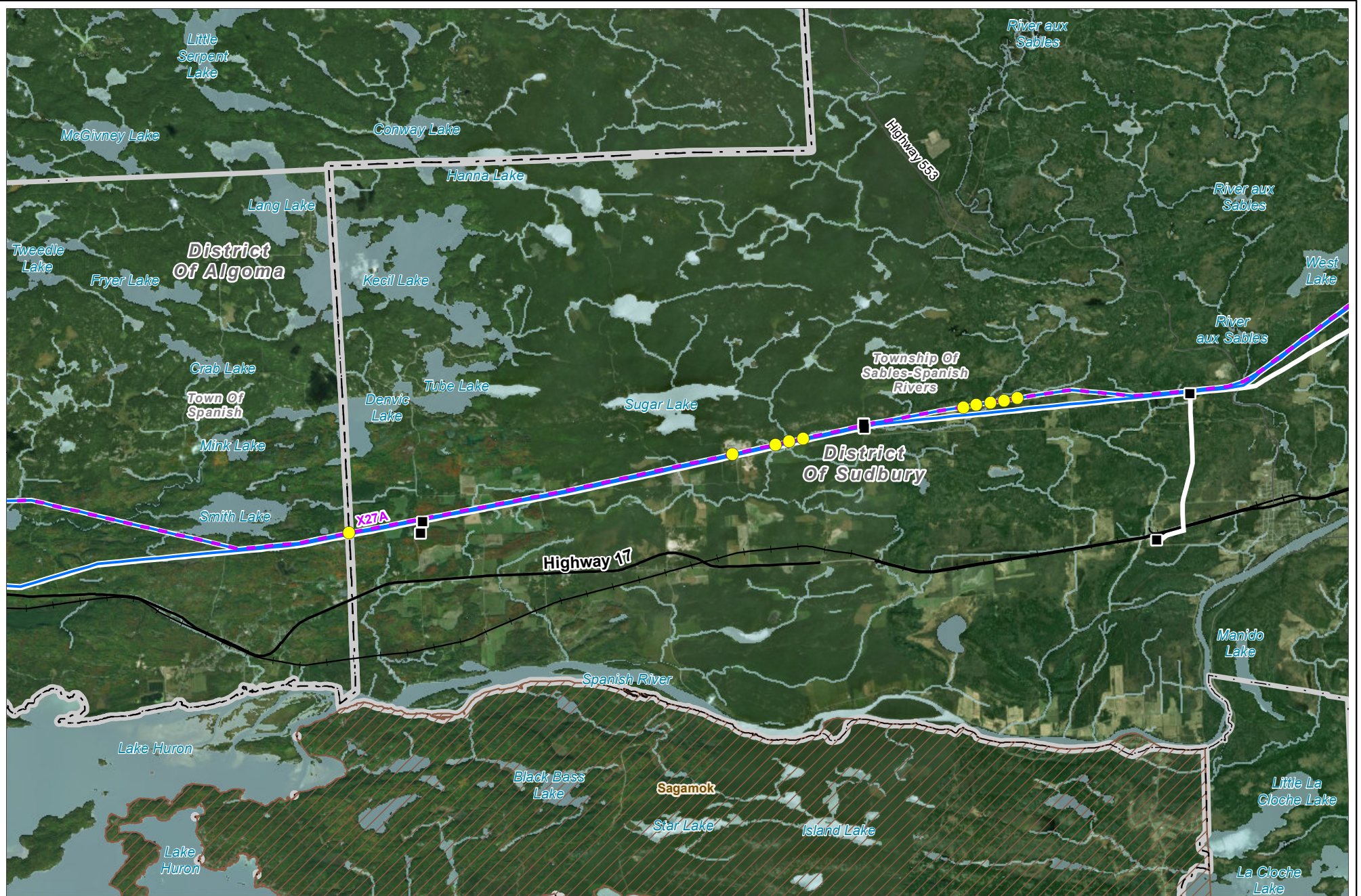
e: Community.Relations@HydroOne.com

t: 1-877-345-6799

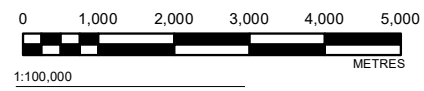
www.hydroone.com/woodpoles – refer to Circuit X27A

Freedom of Information and Protection of Privacy Act

All personal information included in a submission – such as name, address, telephone number and property location – is collected, maintained and disclosed by the Ministry of the Environment, Conservation and Parks for the purpose of transparency and consultation. The information is collected under the authority of the *Environmental Assessment Act* or is collected and maintained for the purpose of creating a record that is available to the general public as described in s. 37 of the *Freedom of Information and Protection of Privacy Act*. Personal information you submit will become part of a public record that is available to the general public unless you request that your personal information remain confidential. For more information, please contact the Ministry of the Environment, Conservation and Parks' Freedom of Information and Privacy Coordinator at 416-327-1434.



- LEGEND**
- Wood Pole Replacement (Approximate Work Area)
 - Existing Station or Junction
 - 230 kV Transmission Line (Circuit X27A)
 - 115 kV Transmission Line
 - 230 kV Transmission Line
 - Highway
 - Road
 - Railway
 - First Nations Reserve
 - Municipal Boundary
 - Water



PROJECT
2020 WOOD POLE REPLACEMENT PROJECT - CIRCUIT X27A

TITLE
GENERAL AREA OVERVIEW MAP

REFERENCE(S)
 1. BASE FEATURES PRODUCED UNDER LICENSE WITH THE ONTARIO MINISTRY OF NATURAL RESOURCES AND FORESTRY © QUEEN'S PRINTER FOR ONTARIO, 2019.
 2. SERVICE LAYER CREDITS (IF APPLICABLE): SOURCE: ESRI, DIGITALGLOBE, GEOEYE, EARTHSTAR GEOGRAPHICS, CNES/AIRBUS DS, USDA, USGS, AEROGRID, IGN, AND THE GIS USER COMMUNITY
 3. DATUM: HYDRO ONE LAMBERT CONFORMAL CONIC
 4. © COPYRIGHT HYDRO ONE NETWORKS INC. ALL RIGHTS RESERVED. NO PART OF THIS DRAWING MAY BE REDISTRIBUTED OR REPRODUCED IN ANY FORM BY ANY PHOTOGRAPHIC, ELECTRONIC, MECHANICAL OR ANY OTHER MEANS, OR USED IN ANY INFORMATION STORAGE OR RETRIEVAL SYSTEM. NEITHER HYDRO ONE NETWORKS INC. NOR ANY OF ITS AFFILIATES ASSUMES LIABILITY FOR ANY ERRORS OR OMISSIONS.

PROJECT NO.
160961328

DATE
2019-09-12

REV.
1





- LEGEND**
- Wood Pole Replacement (Approximate Work Area)
 - 230 kV Transmission Line (Circuit X27A)
 - 115 kV Transmission Line
 - 230 kV Transmission Line
 - Municipal Boundary
 - Water



PROJECT
2020 WOOD POLE REPLACEMENT PROJECT - CIRCUIT X27A
TITLE
GENERAL AREA MAP - TOWN OF SPANISH

REFERENCE(S)
 1. BASE FEATURES PRODUCED UNDER LICENSE WITH THE ONTARIO MINISTRY OF NATURAL RESOURCES AND FORESTRY © QUEEN'S PRINTER FOR ONTARIO, 2019.
 2. SERVICE LAYER CREDITS (IF APPLICABLE): SOURCE: ESRI, DIGITALGLOBE, GEOEYE, EARTHSTAR GEOGRAPHICS, CNES/AIRBUS DS, USDA, USGS, AEROGRIID, IGN, AND THE GIS USER COMMUNITY
 3. DATUM: HYDRO ONE LAMBERT CONFORMAL CONIC
 4. © COPYRIGHT HYDRO ONE NETWORKS INC. ALL RIGHTS RESERVED. NO PART OF THIS DRAWING MAY BE REDISTRIBUTED OR REPRODUCED IN ANY FORM BY ANY PHOTOGRAPHIC, ELECTRONIC, MECHANICAL OR ANY OTHER MEANS, OR USED IN ANY INFORMATION STORAGE OR RETRIEVAL SYSTEM. NEITHER HYDRO ONE NETWORKS INC. NOR ANY OF ITS AFFILIATES ASSUMES LIABILITY FOR ANY ERRORS OR OMISSIONS.

PROJECT NO. 160961328 DATE 2019-09-12 REV. 1