

## Community Notice Wood Pole Replacement

Dear Resident,

April 26, 2021

I am writing you to let you know that Hydro One Networks Inc. (Hydro One) is planning to refurbish approximately two structures along the existing 115 kilovolt (kV) transmission line in your area. The map provided shows a local view of the structure areas to be replaced in your community.

The Wood Pole Replacement Program is an annual routine maintenance program that determines the need to replace end-of-life wood pole structures due to aging infrastructure or are degraded due to insect activity, decomposition, weather damage, or wood pecker activity. Replacement of these wood pole structures, and their associated components, will ensure the continued reliability and integrity of the Ontario transmission system and the electricity supply to communities.

This project is subject to the Class EA for Minor Transmission Facilities (Class EA for MTF) in accordance with the Ontario *Environmental Assessment Act*. The Class EA for MTF is a streamlined process for planning transmission projects that have a predictable range of environmental effects and feasible mitigation measures that can be applied ([www.hydroone.com/ClassEA](http://www.hydroone.com/ClassEA)). Within the Class EA for MTF there are two tiers of assessment (levels) designed to be commensurate with project scale and associated potential for environmental effects. These include: i) Screening Process, and ii) Full Class EA Process. The Screening Process is a further streamlined process for smaller scale projects with minimal environmental effects (confirmed upon satisfying 16 screening criteria). This project is similar to examples provided within the Class EA document where the Screening Process would typically apply. As such, contingent upon consultation activities and satisfaction of the applicable criteria, it is anticipated that this project will follow the Screening Process.

Once the Class EA process is successfully completed, construction could commence as early as July 2021 and be completed by December 2021. If you would like to provide feedback about this work, please contact us by May 25, 2021.

The health and safety of our employees, contractors and the communities we work in is top priority. We continue to follow the latest developments related to COVID 19 and have adjusted our priorities to focus on essential operations. The replacement of these structures has been deemed essential. We continue to ensure all staff are equipped to complete their activities while taking precautions including following good hygiene and social distancing, whenever possible.

### Contact Us!



For more information and/or to provide feedback, please contact:

Eryn Brown, Communication Services Officer

e: [Community.Relations@HydroOne.com](mailto:Community.Relations@HydroOne.com)

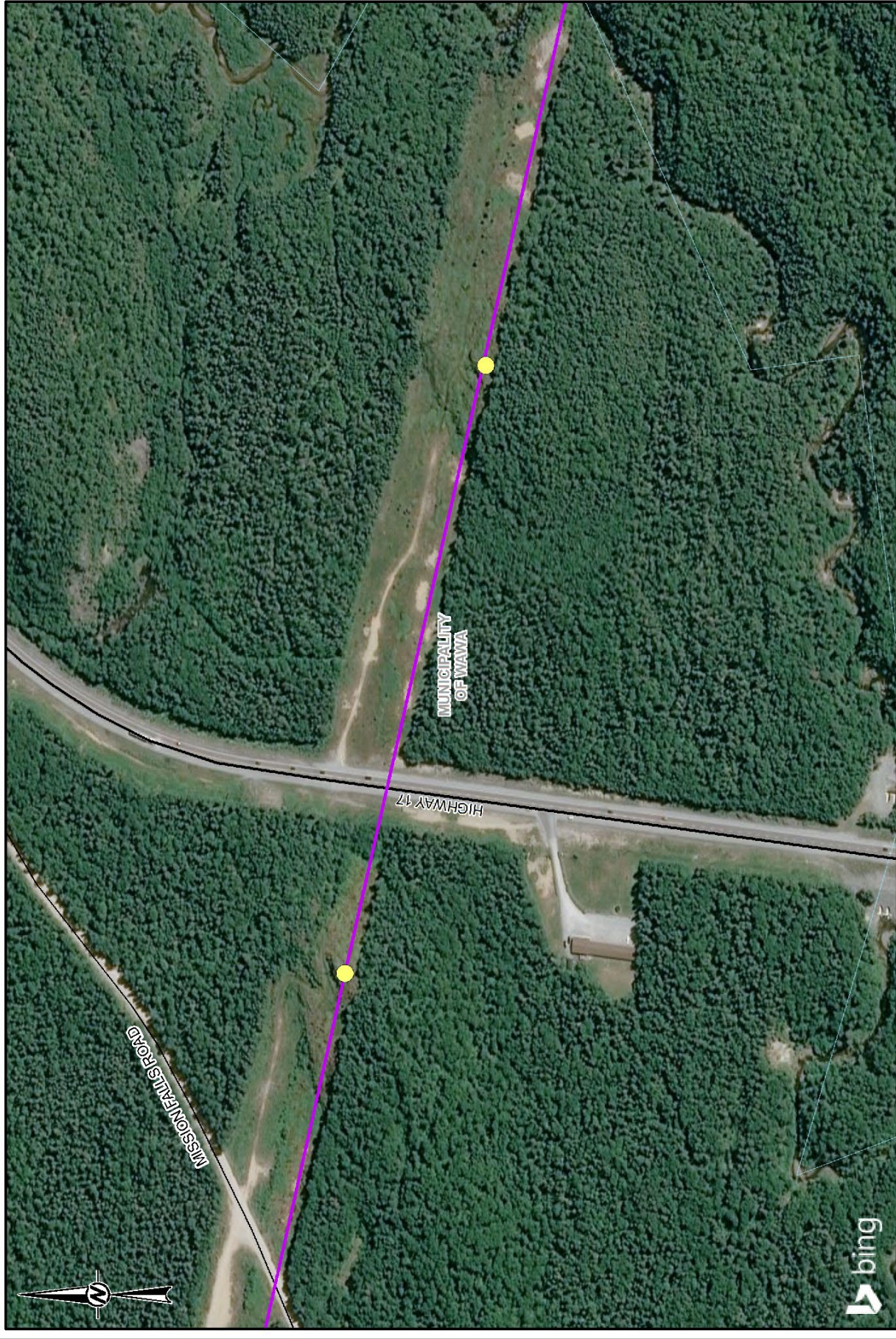
t: 1-877-345-6799

Please refer to Circuit MAGPI1 on our website: [www.hydroone.com/woodpoles](http://www.hydroone.com/woodpoles)

### *Freedom of Information and Protection of Privacy Act*

All personal information included in your request – such as name, address, telephone number and property location – is collected, under the authority of section 30 of the *Environmental Assessment Act* and is collected and maintained for the purpose of creating a record that is available to the general public. As this information is collected for the purpose of a public record, the protection of personal information provided in the *Freedom of Information and Protection of Privacy Act* (FIPPA) does not apply (s.37). Personal information you submit will become part of a public record that is available to the general public unless you request that your personal information remain confidential.





**LEGEND**

- Wood Pole Replacement (Approximate Work Area)
- Circuit MAGP1 1 - 115 kV Transmission Line
- Roads
- Highway

**PROJECT**  
2021 HOSSM WOOD POLE REPLACEMENT PROJECT – CIRCUIT MAGP1

**TITLE**  
GENERAL AREA MAP - MUNICIPALITY OF WAWA

**REFERENCE(S)**

**hydro one**

**Scale:** 15,000 METRES

**Scale bar:** 0, 100, 200 METRES

**PROJECT NO.:** 21-461005

**DATE:** 2021-04-23

**REV.:** 1

IF THIS MEASUREMENT DOES NOT MATCH WHAT IS SHOWN, THE SHEET HAS BEEN MODIFIED FROM ANS/A

