

A series of thin, black, intersecting lines forming a complex, abstract geometric pattern in the top left corner of the page.

COMMUNITY NOTICE

Wood Pole Replacement

Dear Resident,

November 8, 2021

I am writing you to let you know that Hydro One Networks Inc. (Hydro One) is planning to refurbish structures along the existing 115 kilovolt (kV) transmission line in your area. The map provided shows an overview of the entire project.

Project Description

The Wood Pole Replacement Program is an annual routine maintenance program that determines the need to replace end-of-life wood pole structures due to aging infrastructure or are degraded due to insect activity, decomposition, weather damage, or woodpecker activity. Replacement of these wood pole structures, and their associated components, will ensure the continued reliability and integrity of the Ontario transmission system and the electricity supply to communities.

Class Environmental Assessment Process

This project is subject to the Class Environmental Assessment for Minor Transmission Facilities (Class EA for MTF) in accordance with the Ontario *Environmental Assessment Act*. The Class EA for MTF is a streamlined process for planning transmission projects that have a predictable range of environmental effects and feasible mitigation measures that can be applied (<http://www.hydroone.com/ClassEA>).

Within the Class EA for MTF there are two tiers of assessment (levels) designed to be commensurate with project scale and associated potential for environmental effects. These include: i) Screening Process, and ii) Full Class EA Process. The Screening Process is a further streamlined process for smaller scale projects with minimal environmental effects (confirmed upon satisfying 16 screening criteria). This project is similar to examples provided within the Class EA document where the Screening Process would typically apply. As such, contingent upon consultation activities and satisfaction of the applicable criteria, it is anticipated that this project will follow the Screening Process. Once the Class EA process is successfully completed, construction could commence as early as January 2022.

We welcome your comments and feedback regarding this project. Should there be any update to the project information provided, I will ensure that you are promptly informed. Your input on this project is valued and would be appreciated by December 7, 2021.

If you have any questions, or would like additional information regarding this project, please feel free to contact:

Eryn Brown, Community Relations

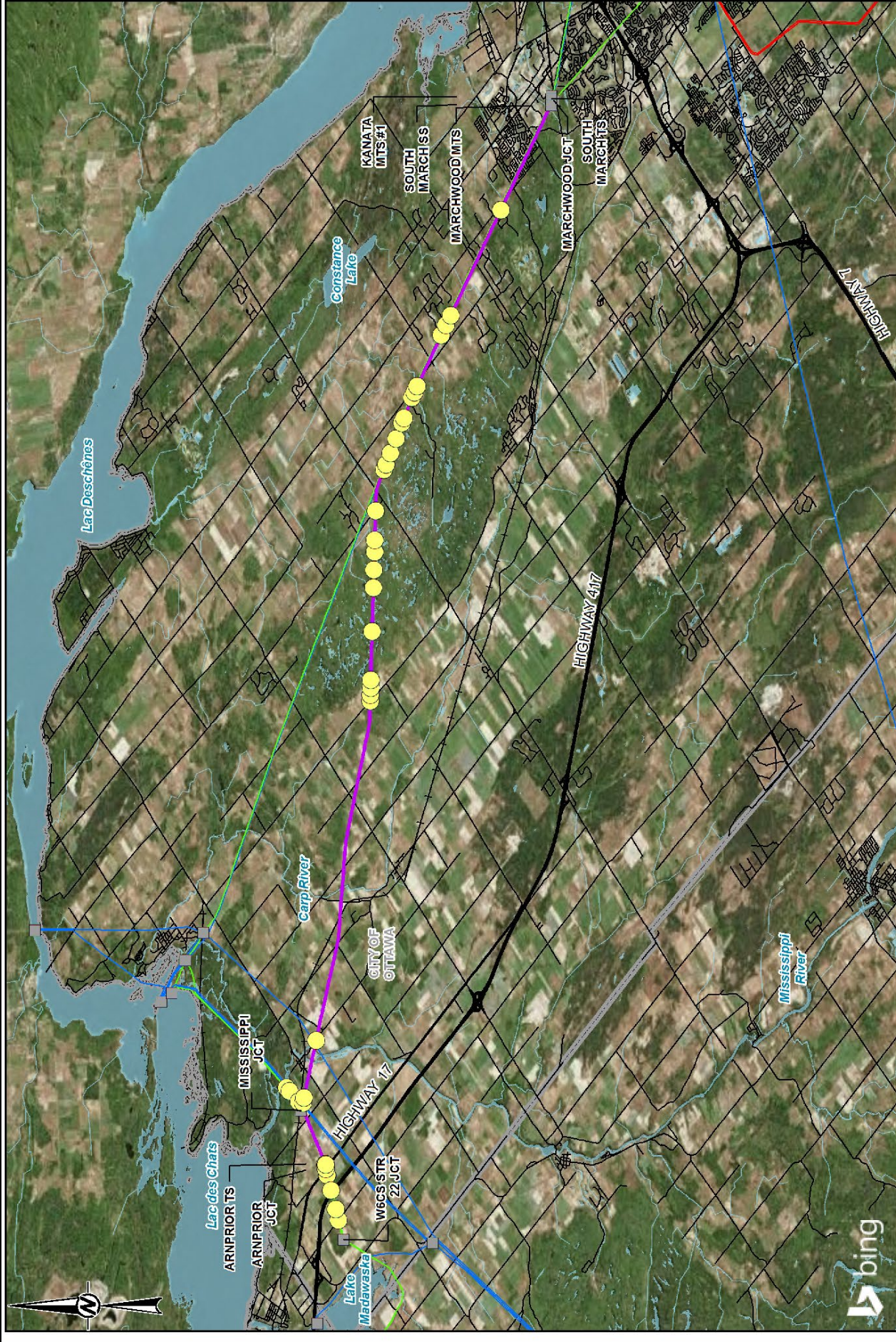
phone: 1-877-345-6799

email: Community.Relations@HydroOne.com

Please refer to Circuit W6CS on our website: www.hydroone.com/woodpoles

Freedom of Information and Protection of Privacy Act

All personal information included in your request – such as name, address, telephone number and property location – is collected, under the authority of section 30 of the *Environmental Assessment Act* and is collected and maintained for the purpose of creating a record that is available to the general public. As this information is collected for the purpose of a public record, the protection of personal information provided in the *Freedom of Information and Protection of Privacy Act* (FIPPA) does not apply (s.37). Personal information you submit will become part of a public record that is available to the general public unless you request that your personal information remain confidential.



PROJECT: 2022 WOOD POLE REPLACEMENT PROJECT – CIRCUIT W6CS

TITLE: GENERAL AREA MAP

REFERENCE(S):

1. USER MAY NOT REPRODUCE OR TRANSMIT THIS INFORMATION IN ANY MANNER WITHOUT THE WRITTEN PERMISSION OF HYDRO ONE. THIS INFORMATION IS PROVIDED FOR YOUR INFORMATION ONLY AND IS NOT TO BE USED FOR ANY OTHER PURPOSE.
2. THIS INFORMATION IS PROVIDED AS IS AND IS NOT TO BE USED FOR ANY OTHER PURPOSE.
3. HYDRO ONE DOES NOT WARRANT THE ACCURACY OF THIS INFORMATION. HYDRO ONE ACCEPTS NO LIABILITY FOR ANY LOSS OR DAMAGE OF ANY KIND, INCLUDING CONSEQUENTIAL DAMAGES, ARISING FROM THE USE OF THIS INFORMATION.
4. HYDRO ONE DOES NOT WARRANT THE ACCURACY OF THIS INFORMATION. HYDRO ONE ACCEPTS NO LIABILITY FOR ANY LOSS OR DAMAGE OF ANY KIND, INCLUDING CONSEQUENTIAL DAMAGES, ARISING FROM THE USE OF THIS INFORMATION.

PROJECT NO. 21493930 DATE 2021-11-04

REV 1

1:200,000

0 5 10 KILOMETERS

0 5 10 METERS

LEGEND

- Wood Pole Replacement (Approximate Work Area)
- Existing Transmission Station and/or Junction
- Circuit W6CS - 115 kV Transmission Line
- Transmission Line (115 kV)
- Transmission Line (230 kV)
- Transmission Line (500 kV)
- Road
- Highway
- Water

hydro one

bing

IF THIS MEASUREMENT DOES NOT MATCH WHAT IS SHOWN, THE SHEET HAS BEEN MODIFIED FROM ANSIA